

PROJECT REFERENCE NO.	SHEET NO.
W-5206AM	EC-10/CONST.10
RW SHEET NO.	
ROADWAY DESIGN ENGINEER	HYDRAULICS ENGINEER

UTILIZE FABRIC INSERT INLET PROTECTION DEVICES IN LIEU OF TYPE C INLET PROTECTION AT INLETS WHERE RUNOFF MAY POND ON ROADWAY USED BY PUBLIC TRAFFIC

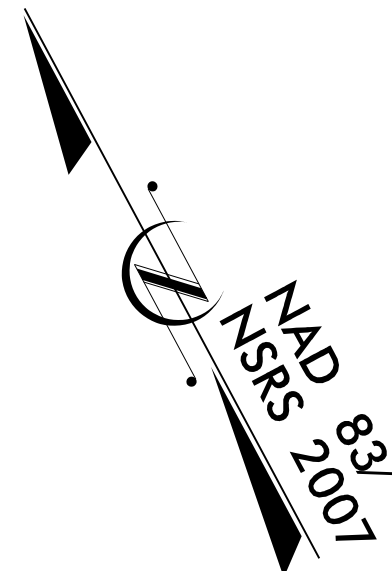
-Y10-

PI Sta 11+51.26  
 $\Delta = 32^{\circ} 01' 02.3" (LT)$   
 $D = 21^{\circ} 05' 09.6"$   
 $L = 151.84'$   
 $T = 77.96'$   
 $R = 271.72'$

-L-

PI Sta 100+32.86  
 $\Delta = 1^{\circ} 36' 56.4" (LT)$   
 $D = 0^{\circ} 40' 26.6"$   
 $L = 239.69'$   
 $T = 119.85'$   
 $R = 8,500.00'$

PI Sta 104+23.93  
 $\Delta = 1^{\circ} 24' 45.8" (RT)$   
 $D = 0^{\circ} 15' 37.6"$   
 $L = 542.44'$   
 $T = 271.23'$   
 $R = 22,000.00'$

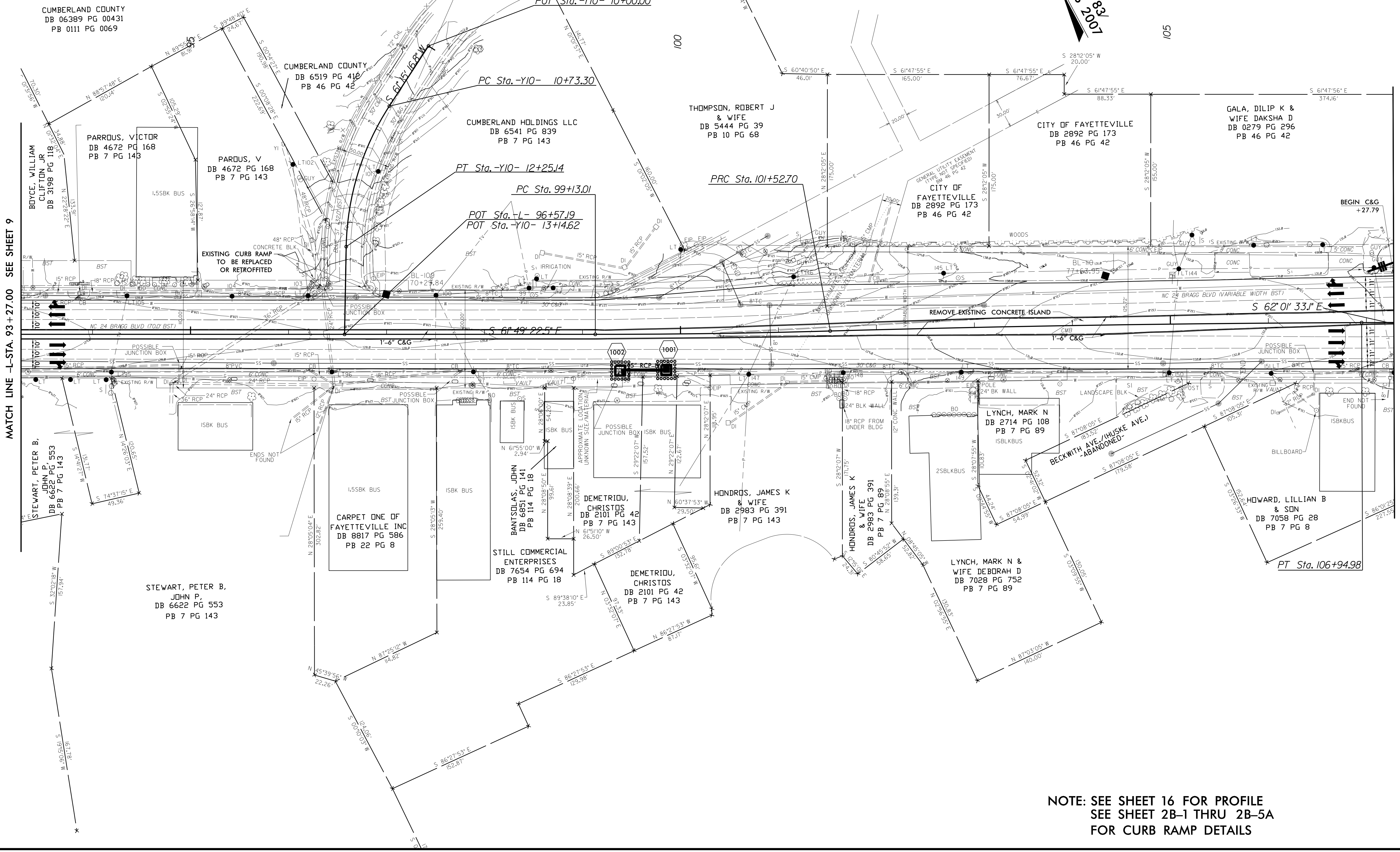


8.17/99

MATCH LINE -L- STA. 93 + 27.00 SEE SHEET 9

MATCH LINE -L- STA. 107 + 28.00 SEE SHEET 11

REVISIONS



NOTE: SEE SHEET 16 FOR PROFILE  
 SEE SHEET 2B-1 THRU 2B-5A  
 FOR CURB RAMP DETAILS