
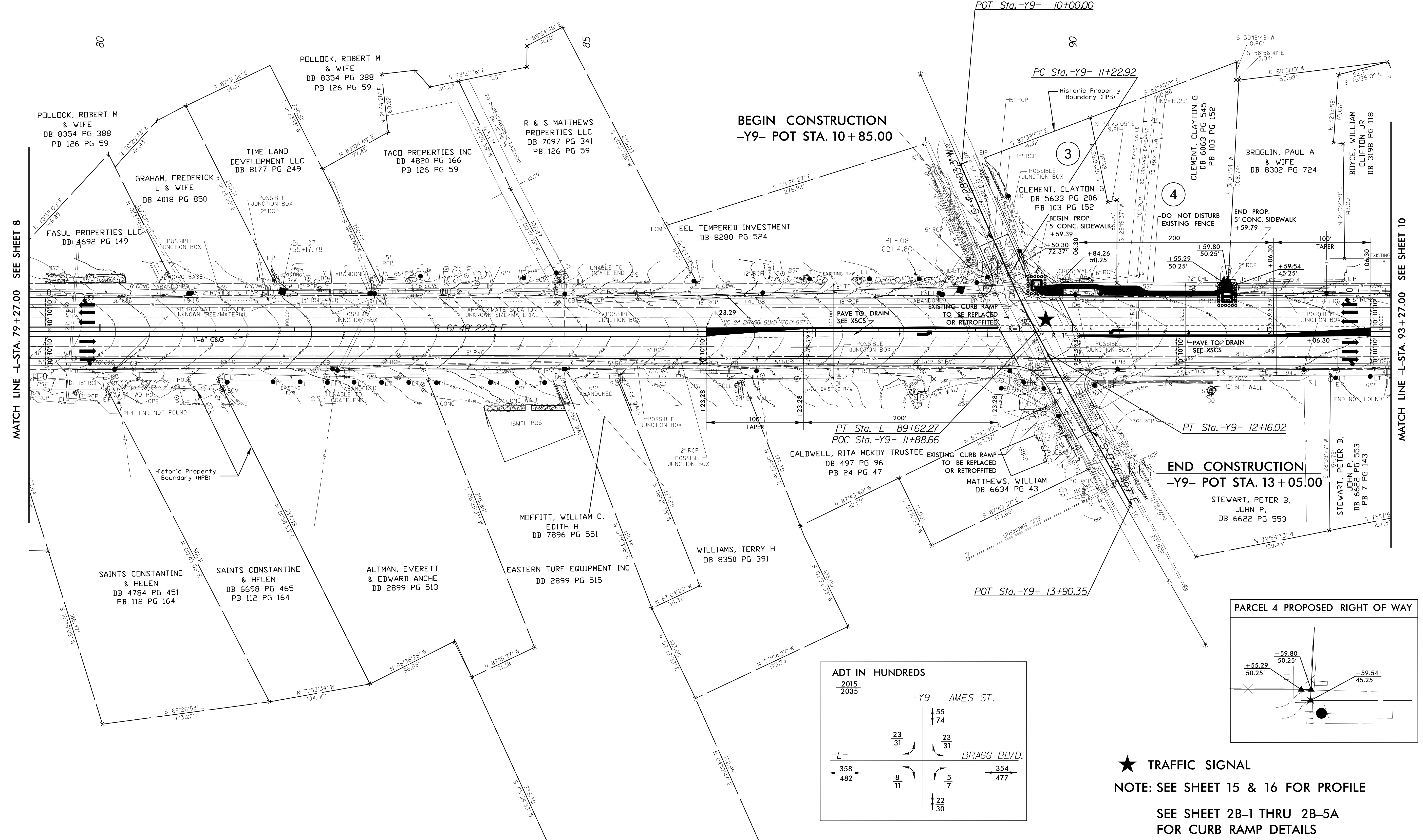
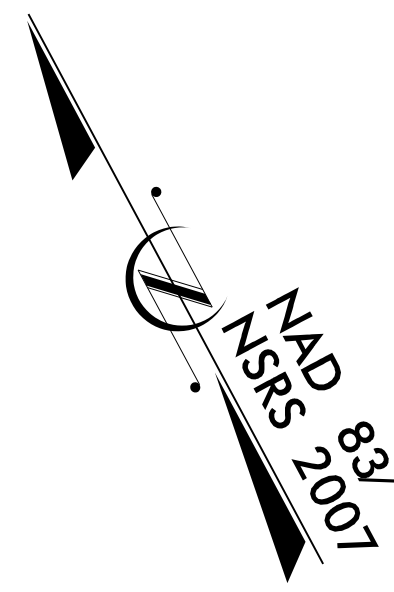


PROJECT REFERENCE NO.		SHEET NO.	
W-5206AM		EC-09/CONST.09	
RW SHEET NO.			
ROADWAY DESIGN ENGINEER		HYDRAULICS ENGINEER	
CDM Smith			

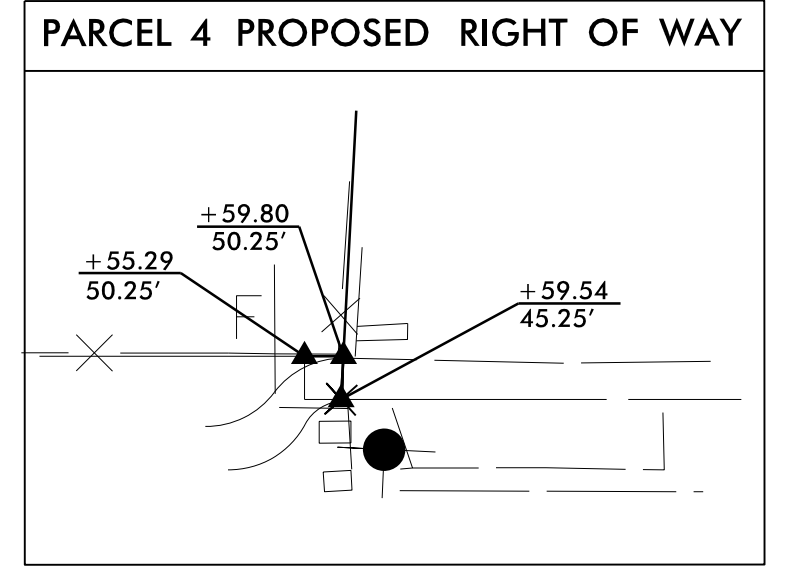
UTILIZE FABRIC INSERT INLET PROTECTION DEVICES IN LIEU OF TYPE C INLET PROTECTION AT INLETS WHERE RUNOFF MAY POND ON ROADWAY USED BY PUBLIC TRAFFIC

-Y9-
 PI Sta 11+69.50
 Δ = 5°04'53.0" (LT)
 D = 5°27'29.7"
 L = 93.10'
 T = 46.58'
 R = 1,049.71'



MATCH LINE -L- STA. 79 + 27.00 SEE SHEET 8

MATCH LINE -L- STA. 93 + 27.00 SEE SHEET 10



ADT IN HUNDREDS			
2015	2035	-Y9- AMES ST.	
		55 74	
		23 31	
		23 31	
-L-			BRAGG BLVD.
358 482	8 11	5 7	354 477
		22 30	

★ TRAFFIC SIGNAL
 NOTE: SEE SHEET 15 & 16 FOR PROFILE
 SEE SHEET 2B-1 THRU 2B-5A
 FOR CURB RAMP DETAILS

REVISIONS

8.17.17.99