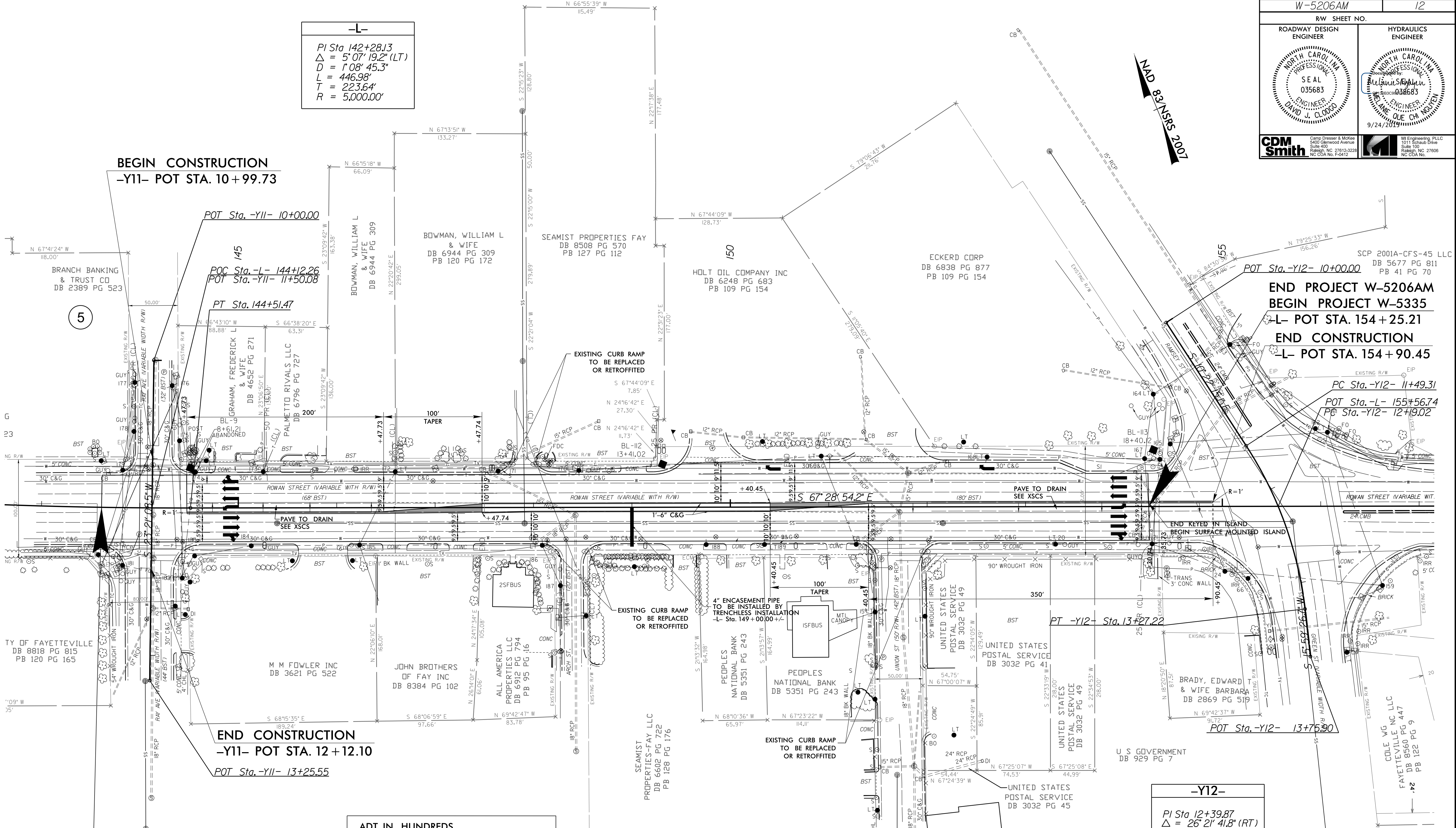


-L-
 PI Sta 142+28.13
 $\Delta = 5' 07' 19.2" (LT)$
 $D = 1' 08' 45.3"$
 $L = 446.98'$
 $T = 223.64'$
 $R = 5,000.00'$

-Y12-
 PI Sta 12+39.87
 $\Delta = 26' 21' 41.8" (RT)$
 $D = 14' 49' 01.1"$
 $L = 177.91'$
 $T = 90.56'$
 $R = 386.69'$



BEGIN CONSTRUCTION
 -Y11- POT STA. 10+99.73

END PROJECT W-5206AM
BEGIN PROJECT W-5335
 -L- POT STA. 154+25.21
END CONSTRUCTION
 -L- POT STA. 154+90.45

END CONSTRUCTION
 -Y11- POT STA. 12+12.10

BEGIN CONSTRUCTION
 END PROJECT B-4490
 -L- POC STA. 143+61.04

ADT IN HUNDREDS		-Y11- RAY AVE.	
2015	2035	7/10	4/6
302	407	19	26
293	394	12	16
		36	49

NOTE: SEE SHEET 17 FOR PROFILE
 SEE SHEET 2C-1 THRU 2C-6
 FOR CURB RAMP DETAILS

REVISIONS

8.17.19
 9/21/2015 4:34:47 PM
 W:\5206AM\12.dgn
 11:56:31 AM