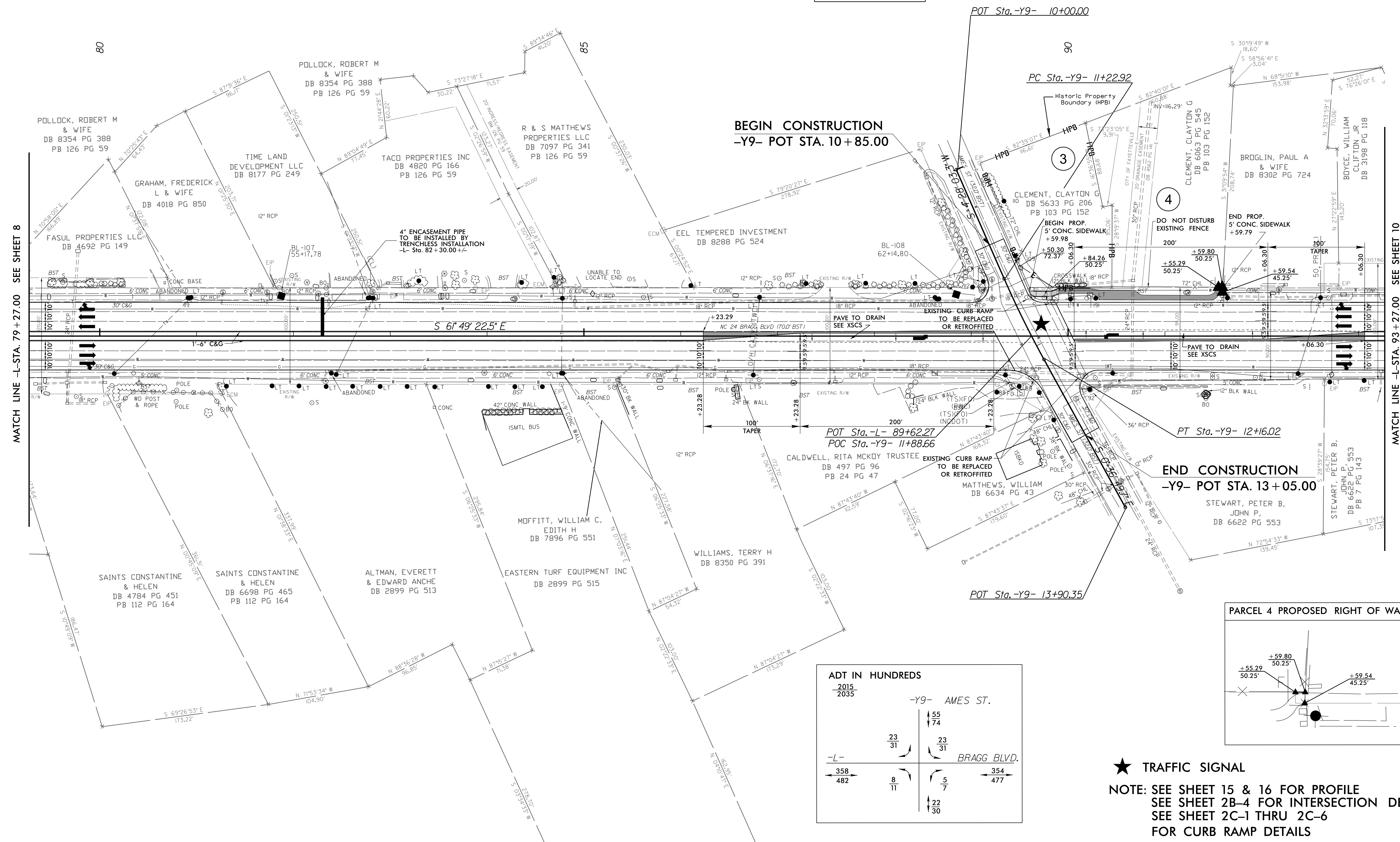
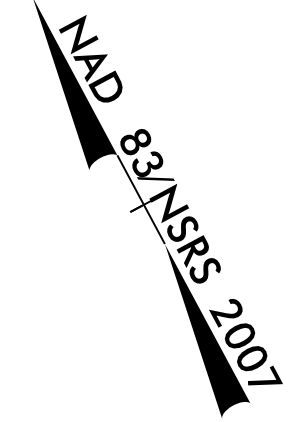
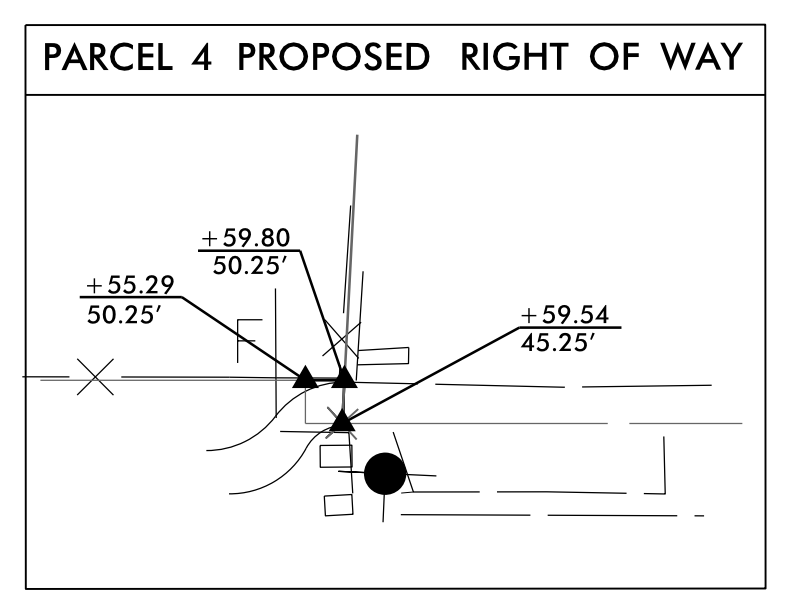


-Y9-

$PI\ Sta\ 11+69.50$   
 $\Delta = 5^{\circ}04'53.0''\ (LT)$   
 $D = 5^{\circ}27'29.7''$   
 $L = 93.10'$   
 $T = 46.58'$   
 $R = 1,049.71'$



ADT IN HUNDREDS			
2015		2035	
-Y9- AMES ST.		23 31	
-L- BRAGG BLVD.		23 31	
		8 11	
		354 477	



★ TRAFFIC SIGNAL

NOTE: SEE SHEET 15 & 16 FOR PROFILE  
 SEE SHEET 2B-4 FOR INTERSECTION DETAIL  
 SEE SHEET 2C-1 THRU 2C-6 FOR CURB RAMP DETAILS

REVISIONS

MATCH LINE -L- STA. 79 + 27.00 SEE SHEET 8

MATCH LINE -L- STA. 93 + 27.00 SEE SHEET 10

9/24/2015 4:30:48 PM W:\5206AM\TCD\psh\_9.dgn  
 8/17/99