

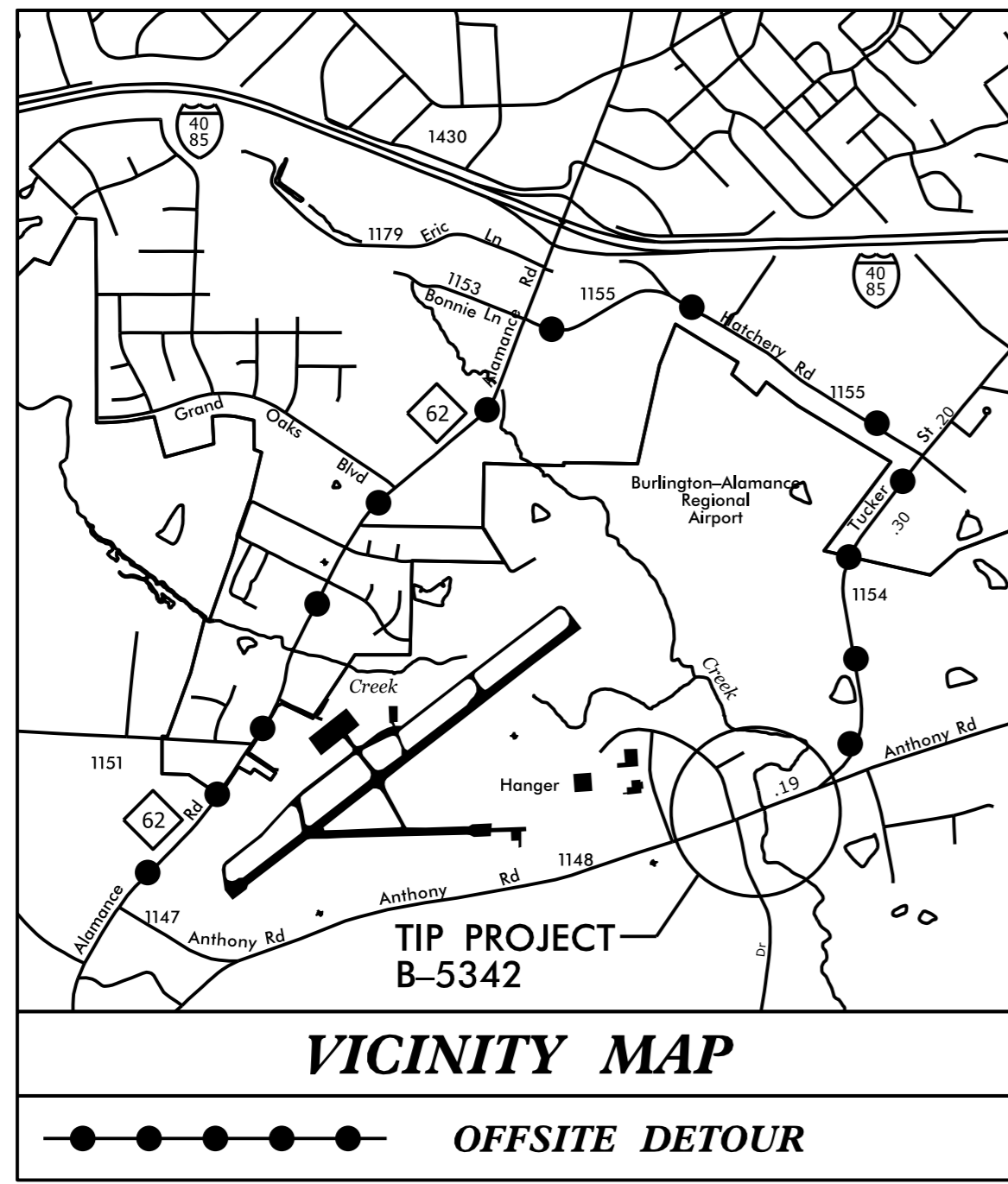
**This electronic collection of documents is provided
for the convenience of the user
and is Not a Certified Document –**

**The documents contained herein were originally issued
and sealed by the individuals whose names and license
numbers appear on each page, on the dates appearing
with their signature on that page.**

**This file or an individual page
shall not be considered a certified document.**

09/08/99

See Sheet 1-A For Index of Sheets
See Sheet 1-B For Conventional Symbols



STATE OF NORTH CAROLINA DIVISION OF HIGHWAYS

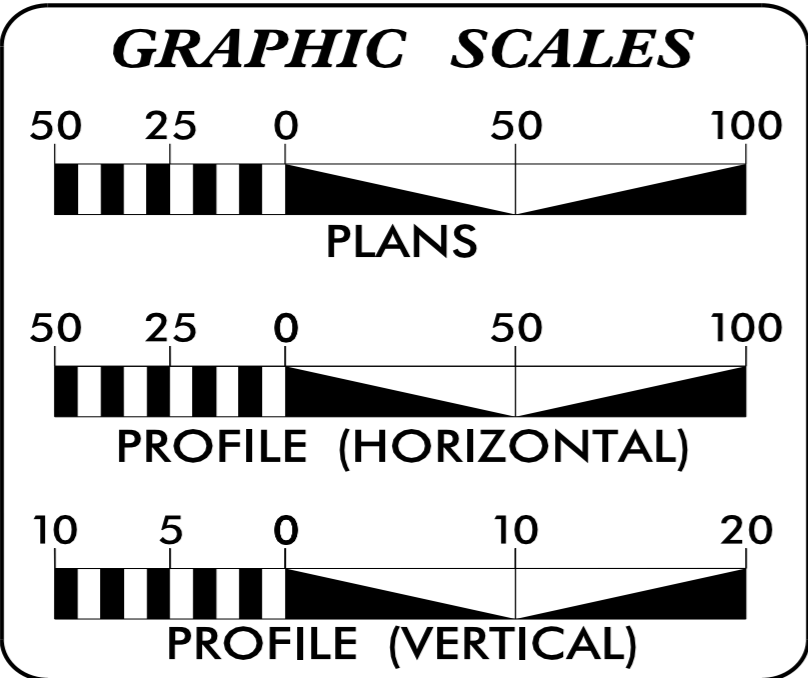
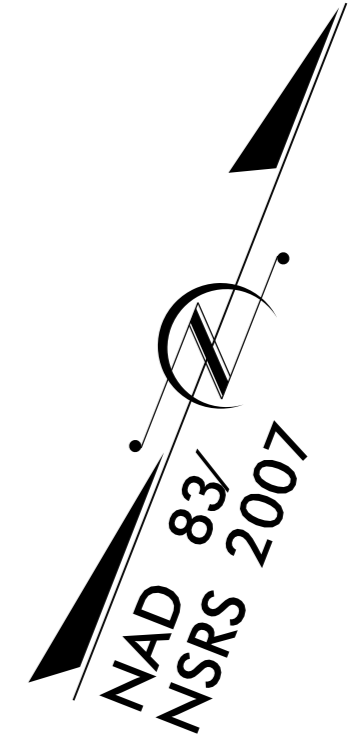
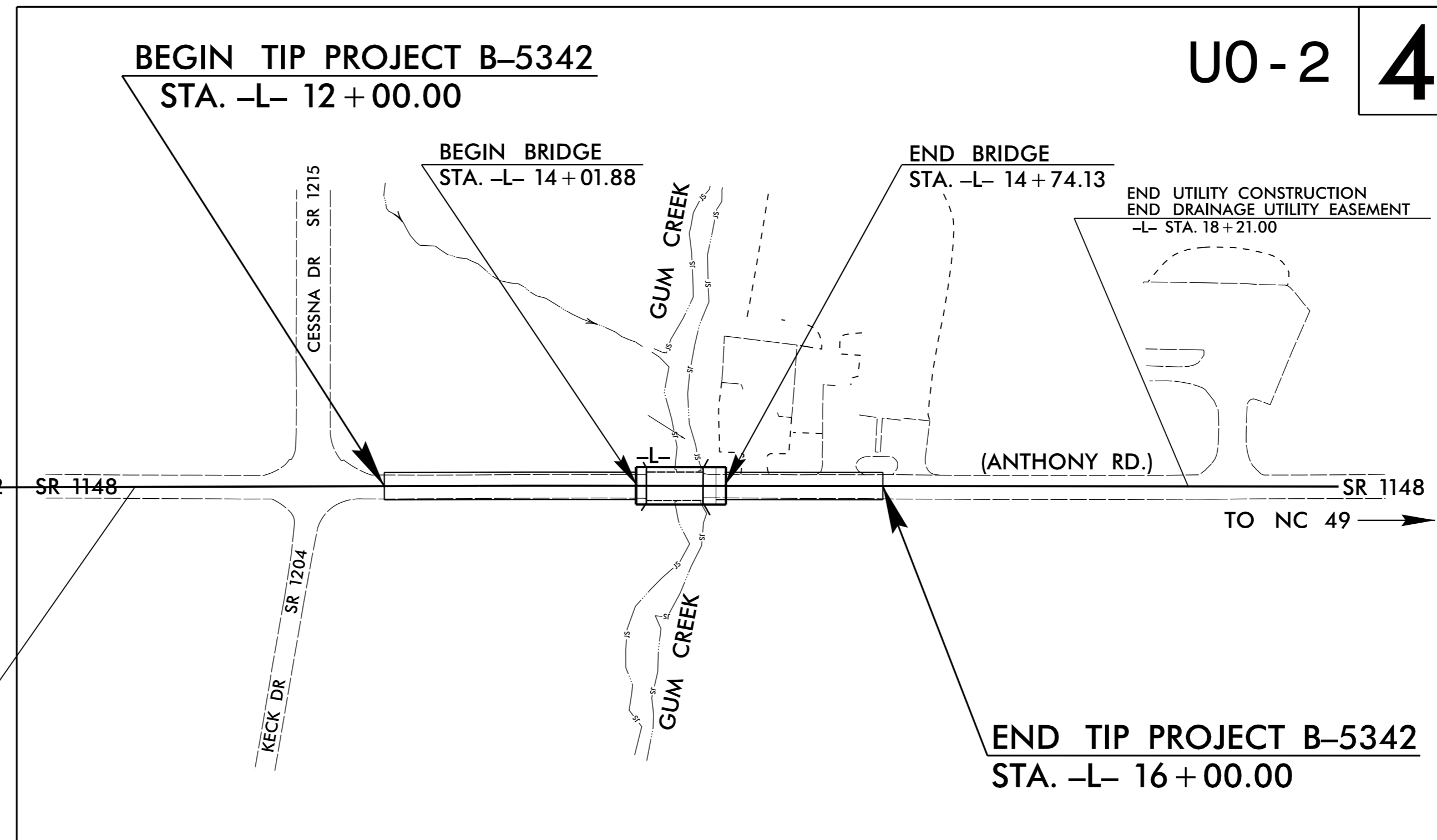
T.I.P. NO.	SHEET NO.
B-5342	UO-1

UTILITIES BY OTHERS PLANS ALAMANCE COUNTY

LOCATION: BRIDGE No. 169 OVER GUM CREEK ON SR 1148 (ANTHONY ROAD)

TYPE OF WORK: UTILITIES

TIP PROJECT: B-5342




INDEX OF SHEETS

SHEET NO.	DESCRIPTION
UO-1	TITLE SHEET
UO-2	UTILITY BY OTHERS PLAN SHEET

UTILITY OWNERS ON PROJECT

- (A) Duke Energy - Power
- (B) Level 3 Communication- Under Ground Cable Telephone
- (C) Piedmont Natural Gas Gas
- (D) AT&T Telephone
- (E) Time Warner Cable - TVC
- (F) City of Burlington - Water and Sewer



PREPARED IN THE OFFICE OF:
**DIVISION OF HIGHWAYS
UTILITIES UNIT
UTILITIES ENGINEERING**

1555 MAIL SERVICES CENTER
RALEIGH, NC 27699-1555
PHONE (919) 707-6690
FAX (919) 250-4151

Roger Worthington, P.E. UTILITIES SECTION ENGINEER
Steve McKee, P.E. UTILITIES SQUAD LEADER PROJECT ENGINEER
Jamshid Hafshejani UTILITIES PROJECT DESIGNER

31-AUG-2015 10:50
R:\Utilities\Engineering\UB0\Proj\B-5342_Uf\uo-1.dgn
\$\$\$\$\$USERNAME\$\$\$\$\$

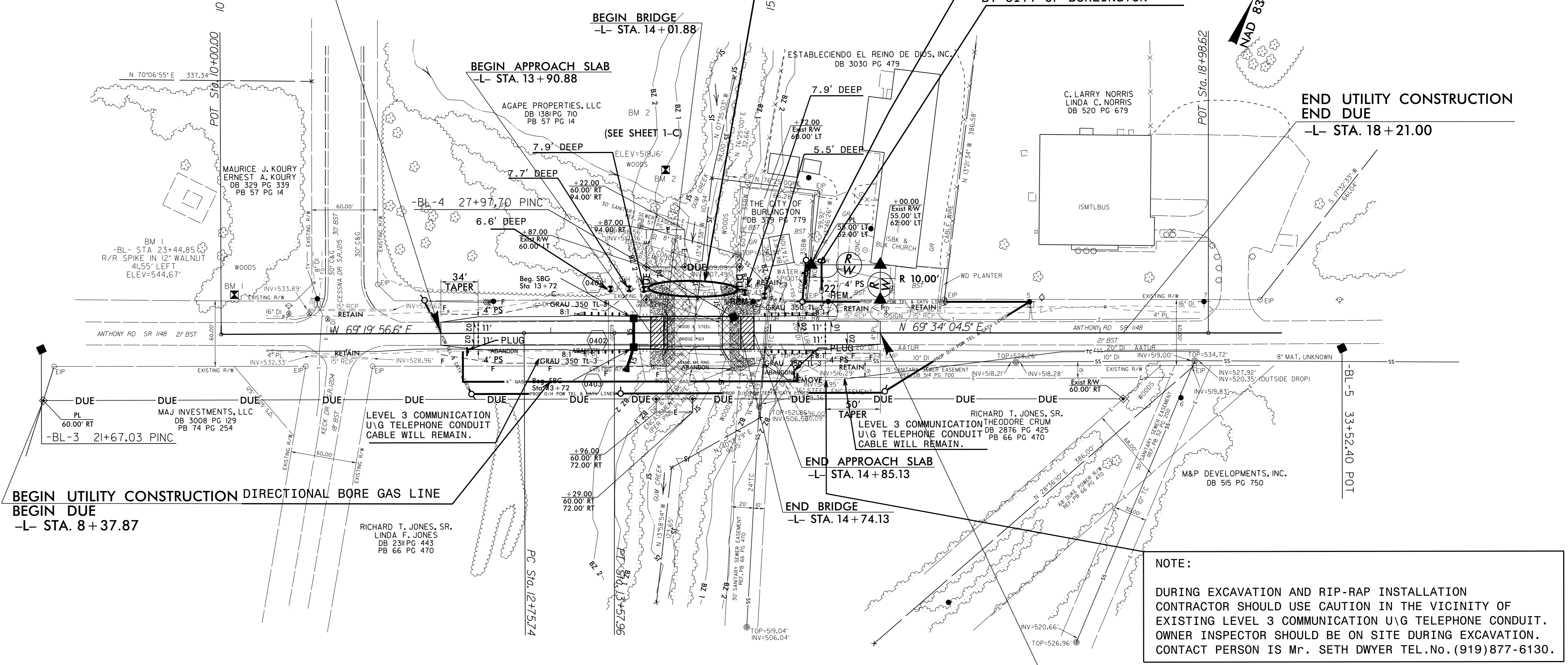
UTILITIES BY OTHERS

NOTE:
DURING EXCAVATION AND RIP-RAP INSTALLATION, CONTRACTOR SHOULD USE CAUTION IN THE VICINITY OF EXISTING 16" WATER AND EXISTING SEWER LINES. CITY OF BURLINGTON INSPECTOR SHOULD BE ON SITE DURING EXCAVATION. CONTACT PERSON FOR CITY OF BURLINGTON IS Mr. MATT BECKWITH, ASST. CITY ENGINEER.

NOTE:
ALL PROPOSED UTILITY WORK SHOWN ON THIS SHEET WILL BE DONE BY OTHERS. NO PAYMENT WILL BE MADE TO THE CONTRACTOR FOR PROPOSED UTILITY WORK SHOWN ON THIS SHEET.

BEGIN TIP PROJECT B-5342
-L- STA. 12 + 00.00

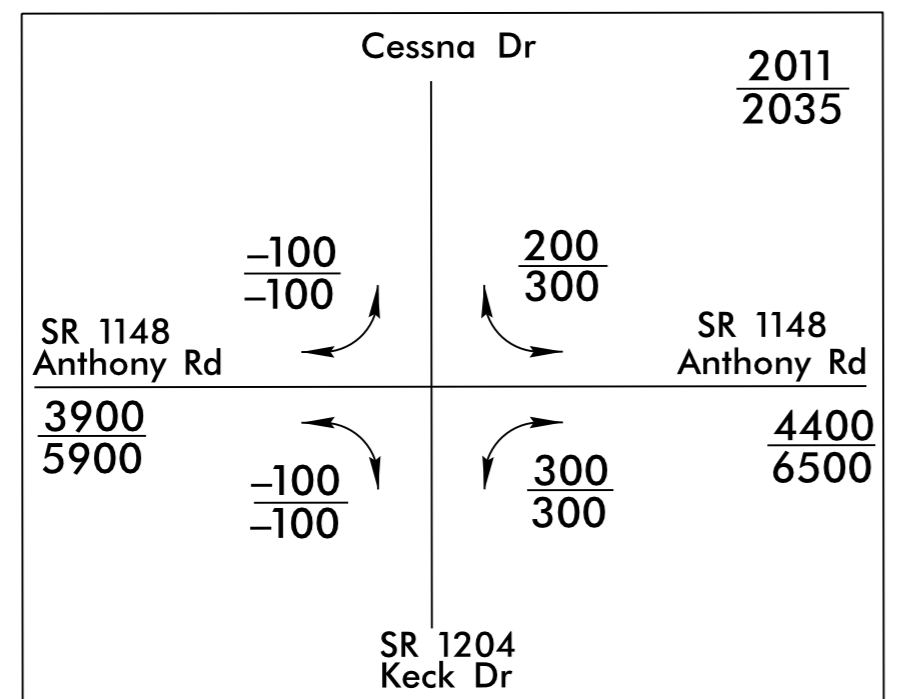
SEE SHEET 5 FOR PROFILE



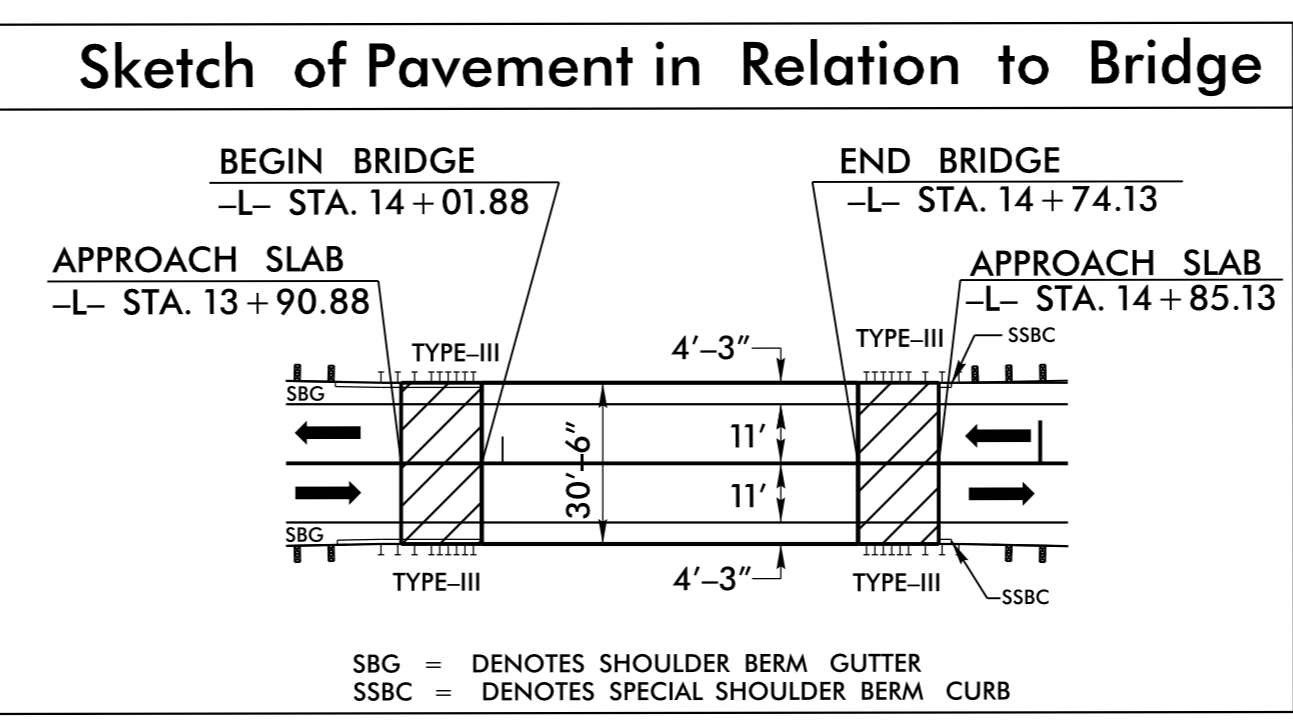
BEGIN UTILITY CONSTRUCTION DIRECTIONAL BORE GAS LINE
BEGIN DUE
-L- STA. 8 + 37.87

NOTE:
DURING EXCAVATION AND RIP-RAP INSTALLATION CONTRACTOR SHOULD USE CAUTION IN THE VICINITY OF EXISTING LEVEL 3 COMMUNICATION U/G TELEPHONE CONDUIT. OWNER INSPECTOR SHOULD BE ON SITE DURING EXCAVATION. CONTACT PERSON IS Mr. SETH DWYER TEL.No. (919)877-6130.

END TIP PROJECT B-5342
-L- STA. 16 + 00.00



-L-
PI Sta 13+16.85
 $\Delta = 0'14'08.0''$ (RT)
 $D = 0'17'11.3''$
 $L = 82.22'$
 $T = 41.1'$
 $R = 20,000.00'$



5/14/99
3-AUG-2015 10:37 AM C:\Users\jacob\OneDrive\Documents\B5342_U0-2.dgn