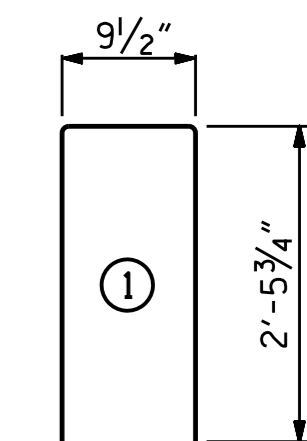


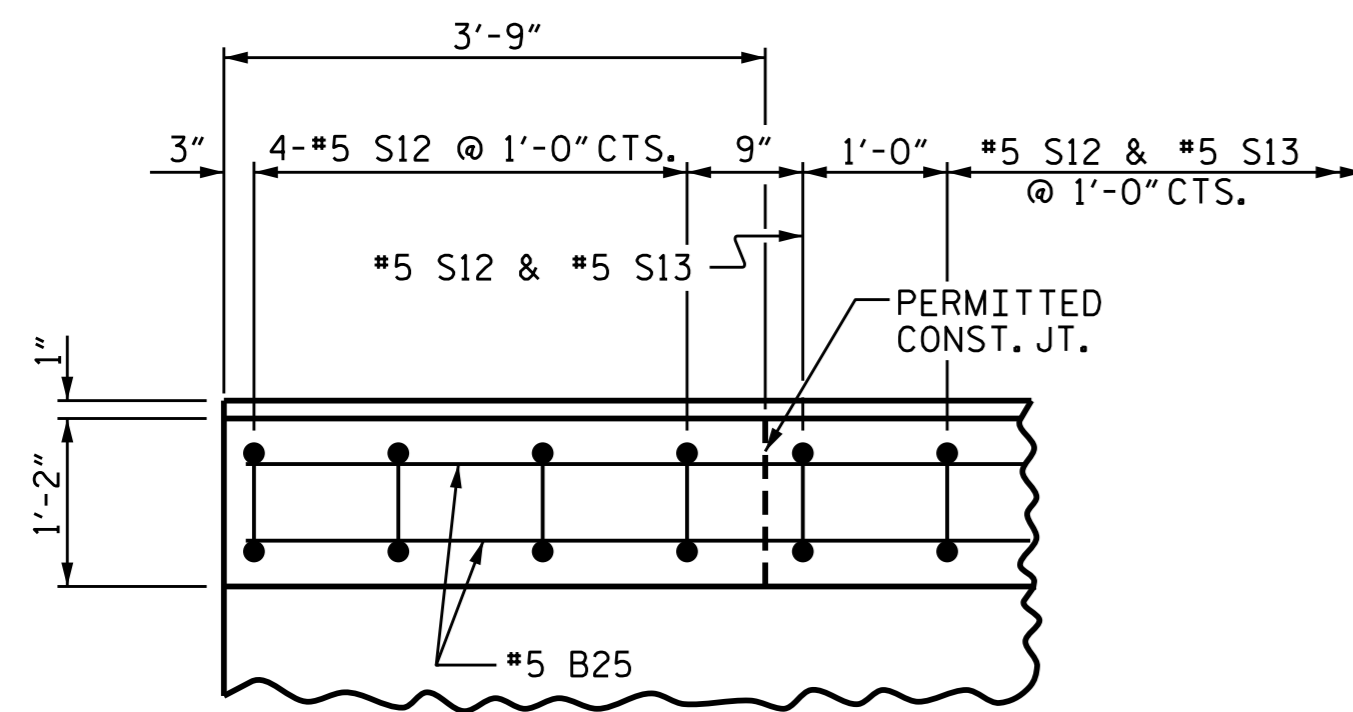
**BILL OF MATERIAL FOR
2 PARAPETS & 4 END POSTS**

BAR	NO.	SIZE	TYPE	LENGTH	WEIGHT
* B25	60	#5	STR	22'-11"	1434
* E1	8	#7	STR	2'-10"	46
* E2	8	#7	STR	3'-4"	55
* E3	8	#7	STR	3'-10"	63
* E4	8	#7	STR	4'-4"	71
* E5	8	#7	STR	4'-9"	78
* F1	8	#6	STR	1'-9"	21
* F2	8	#6	STR	2'-11"	35
* F3	8	#6	STR	3'-3"	39
* S13	126	#5	1	5'-9"	756
* EPOXY COATED REINFORCING STEEL				LBS.	2,598
CLASS AA CONCRETE				CU.YDS.	18.2
CONCRETE PARAPET				LIN.FT.	140.00

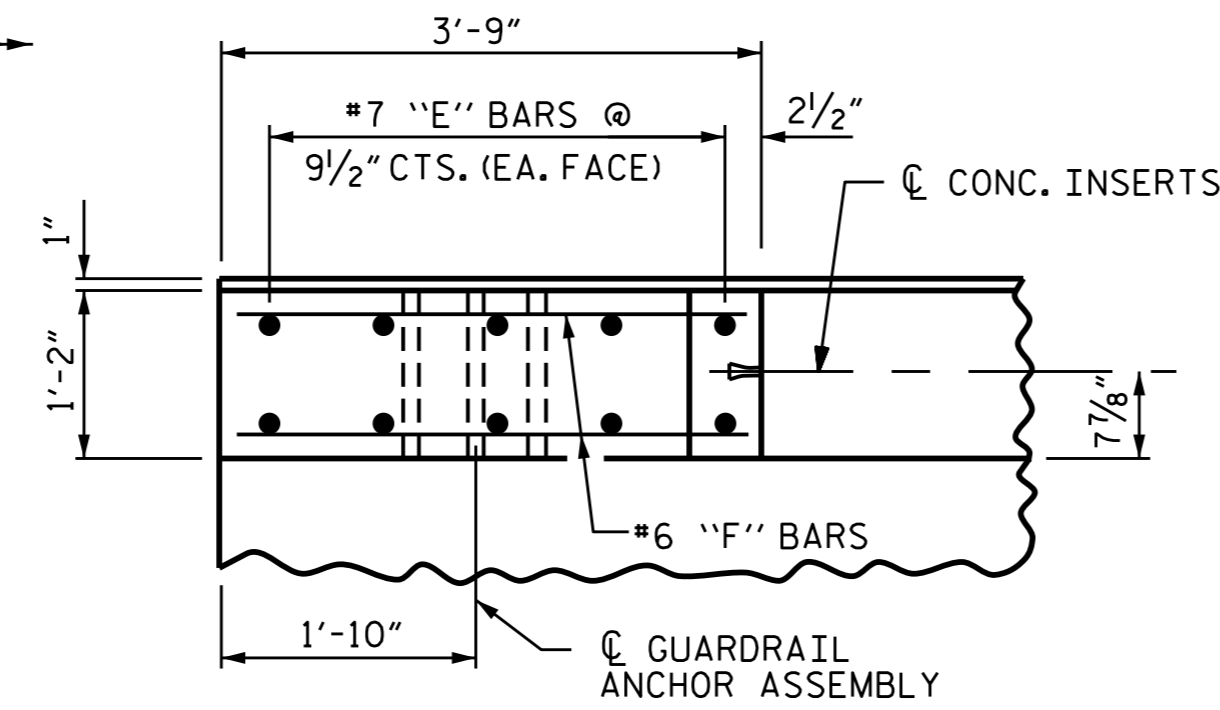
BAR TYPE



ALL BAR DIMENSIONS ARE OUT TO OUT

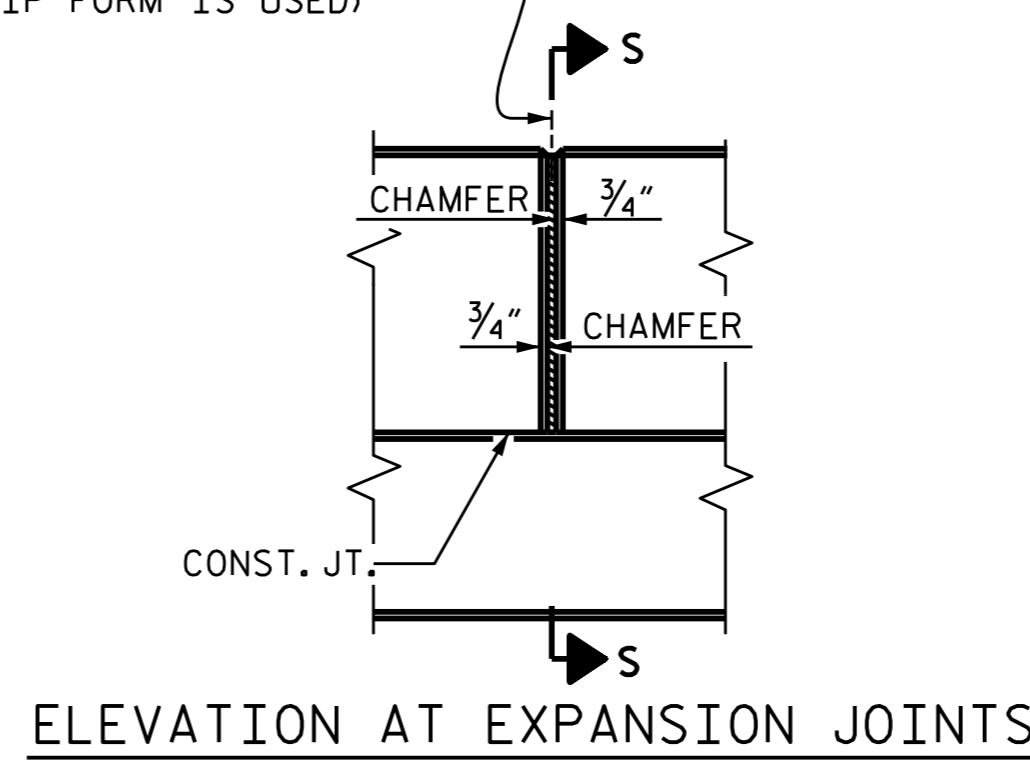


PLAN OF PARAPET

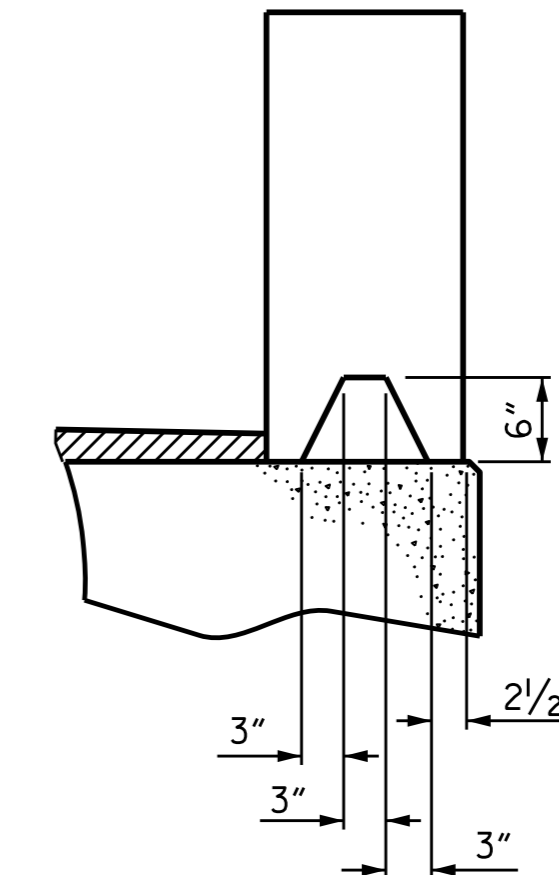


PLAN OF END POST

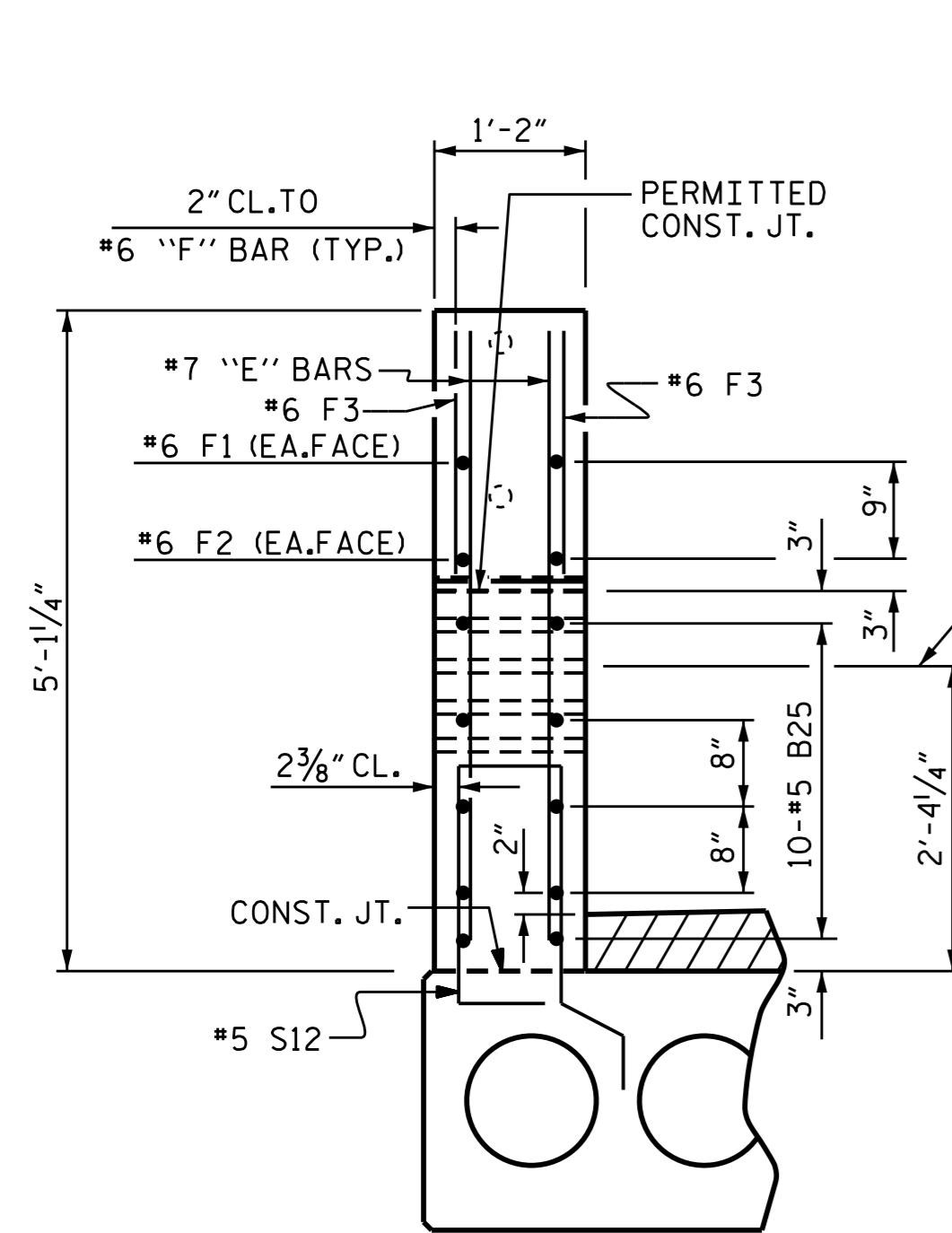
1/2" EXP. JT. MAT'L HELD IN PLACE WITH GALVANIZED NAILS.
(NOTE: OMIT EXP. JT. MAT'L. WHEN SLIP FORM IS USED)



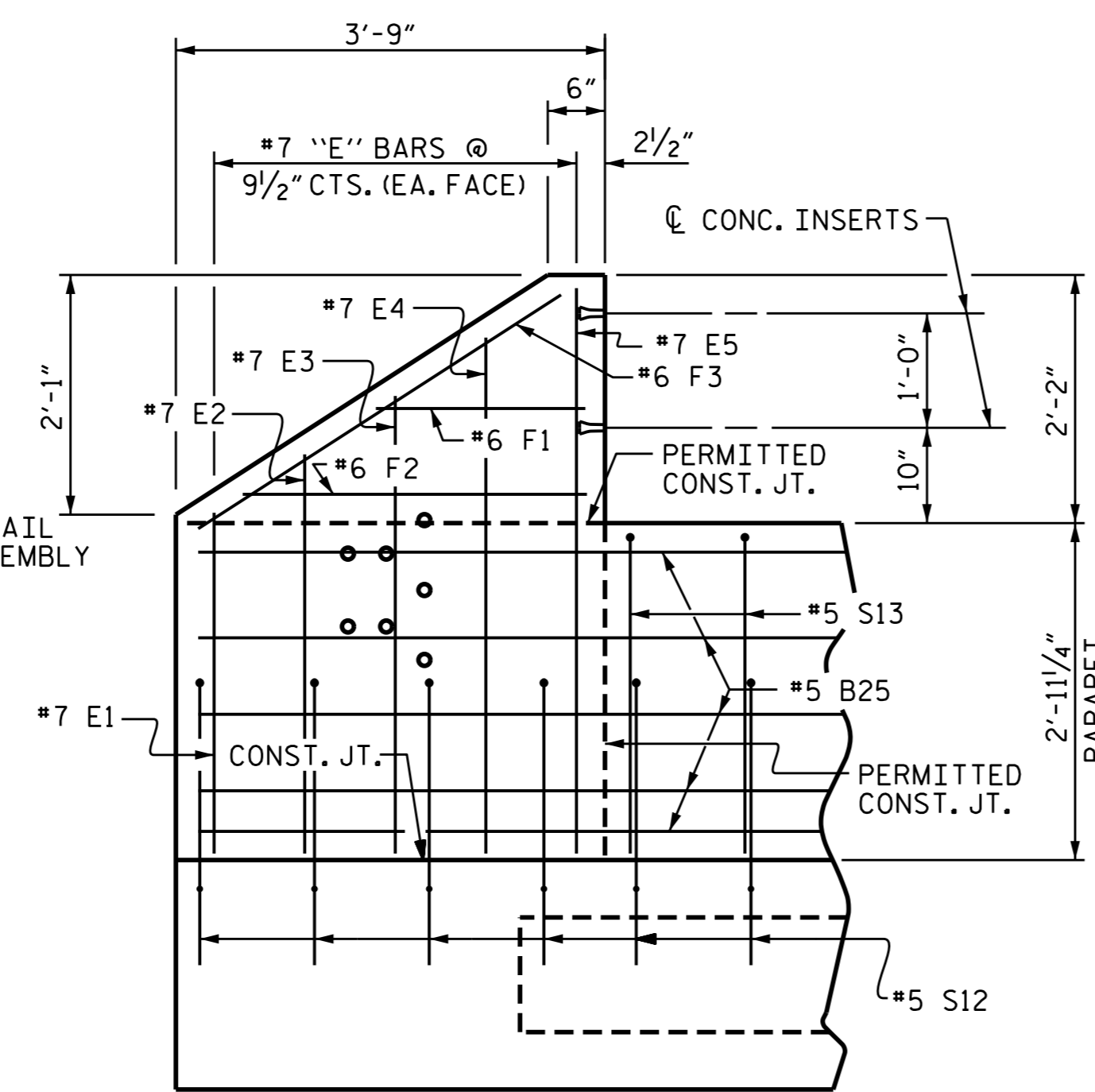
ELEVATION AT EXPANSION JOINTS



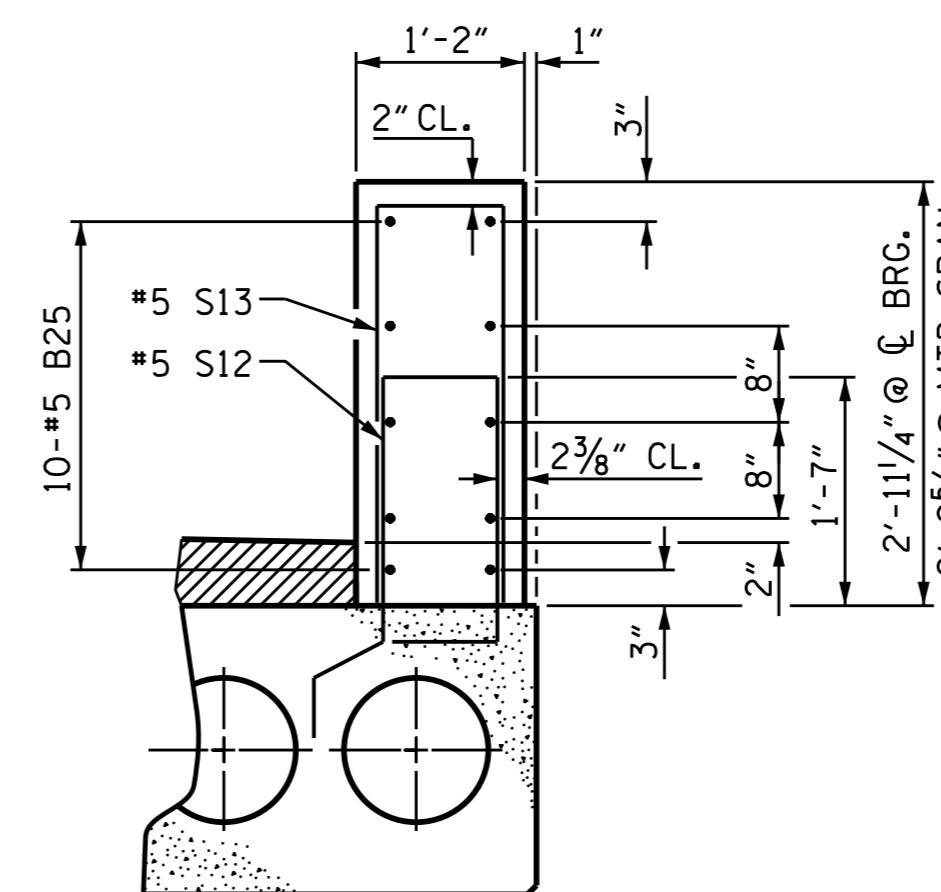
SECTION S-S
AT DAM IN OPEN JOINT
(THIS IS TO BE USED ONLY WHEN SLIP FORM IS USED)



END VIEW



ELEVATION



TWO BAR METAL RAIL PARAPET SECTION

PARAPET AND END POST FOR TWO BAR RAIL

FIELD BEND #5 B25 BARS TO AVOID GUARDRAIL ANCHORAGE ASSEMBLY

PROJECT NO. B-5342
ALAMANCE COUNTY
STATION: 14+38.00 -L-



DocuSigned by:
T. H. Fang
E72088400977435...
9/15/2015

STATE OF NORTH CAROLINA
DEPARTMENT OF TRANSPORTATION
RALEIGH

1'-2" X 2'-11 1/4"
CONCRETE PARAPETS
AND END POSTS

REVISIONS						SHEET NO.
NO.	BY:	DATE:	NO.	BY:	DATE:	S-11
1			3			TOTAL SHEETS
2			4			18

DRAWN BY: I.L. AVERETTE DATE: 7/28/14
CHECKED BY: P.K. NEWTON DATE: 6/17/15
DESIGN ENGINEER OF RECORD: I.L. AVERETTE DATE: 7/15/15