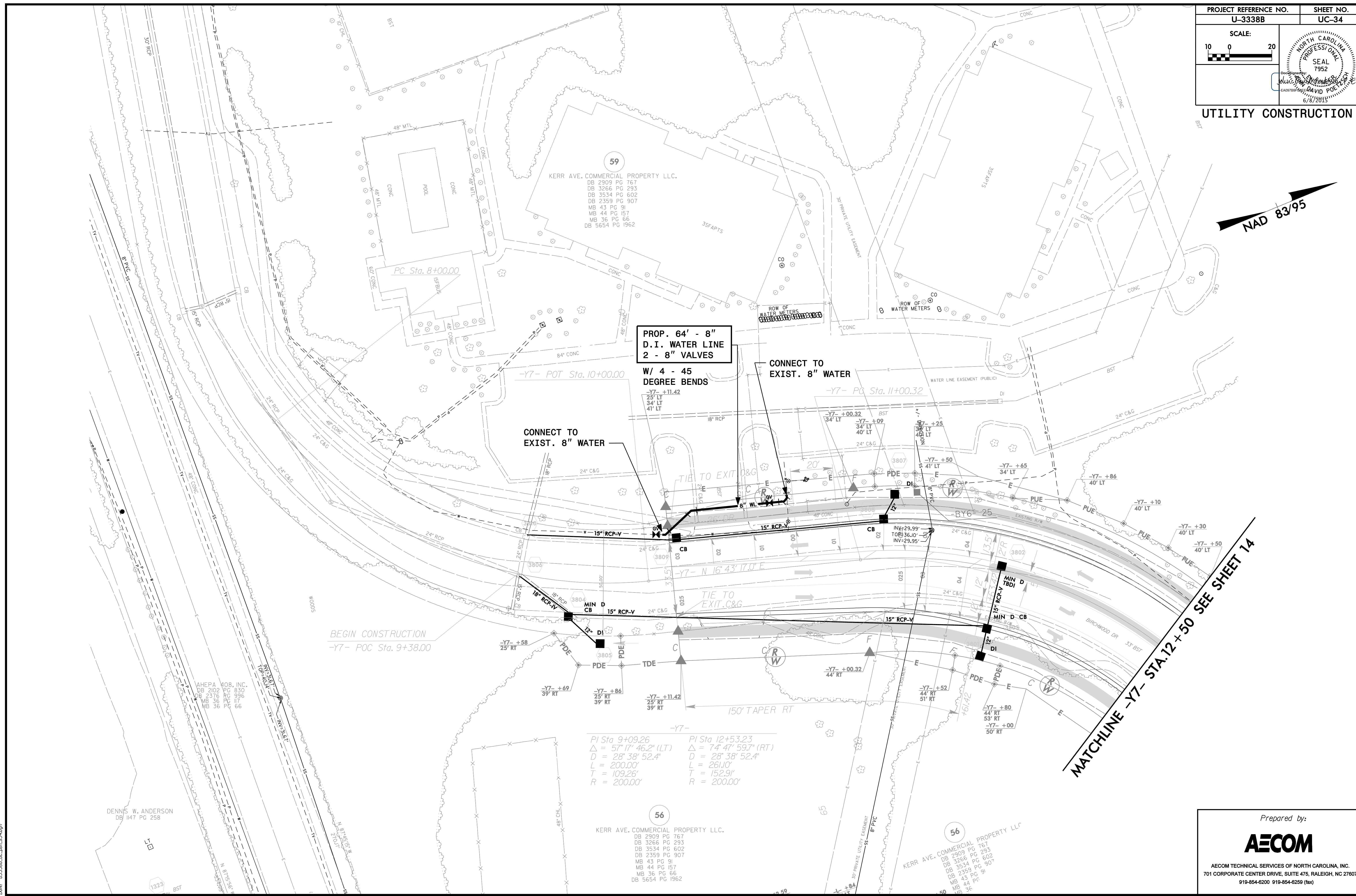
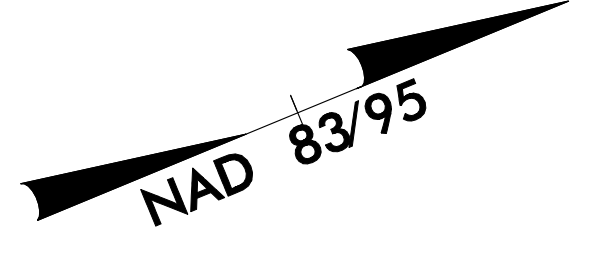


PROJECT REFERENCE NO. U-3338B	SHEET NO. UC-34
SCALE: 10 0 20	

UTILITY CONSTRUCTION



**PROP. 64' - 8" D.I. WATER LINE
2 - 8" VALVES**

W/ 4 - 45 DEGREE BENDS

CONNECT TO EXIST. 8" WATER

CONNECT TO EXIST. 8" WATER

MATCHLINE -Y7- STA. 12+50 SEE SHEET 14

PI Sta 9+09.26	PI Sta 12+53.23
$\Delta = 57^{\circ} 17' 46.2" (LT)$	$\Delta = 74^{\circ} 47' 59.7" (RT)$
$D = 28^{\circ} 38' 52.4"$	$D = 28^{\circ} 38' 52.4"$
$L = 200.00'$	$L = 261.00'$
$T = 109.26'$	$T = 152.91'$
$R = 200.00'$	$R = 200.00'$

AHEPA 408, INC.
DB 2102 PG 830
DB 2376 PG 996
MB 36 PG 66
MB 36 PG 66

DENNIS W. ANDERSON
DB 147 PG 258

56
KERR AVE. COMMERCIAL PROPERTY LLC.
DB 2909 PG 767
DB 3266 PG 293
DB 3534 PG 602
DB 2359 PG 907
MB 43 PG 91
MB 44 PG 157
MB 36 PG 66
DB 5654 PG 1962

56
KERR AVE. COMMERCIAL PROPERTY LLC.
DB 2909 PG 767
DB 3266 PG 293
DB 3534 PG 602
DB 2359 PG 907
MB 43 PG 91
MB 44 PG 157
MB 36 PG 66

DATE: 6/15/2015
DRAWN: 0233802 uc_psn_s344gn

Prepared by:

AECOM

AECOM TECHNICAL SERVICES OF NORTH CAROLINA, INC.
701 CORPORATE CENTER DRIVE, SUITE 475, RALEIGH, NC 27607
919-854-6200 919-854-6259 (fax)