

MATCHLINE -Y7A- STA.22+50 SEE SHEET 36

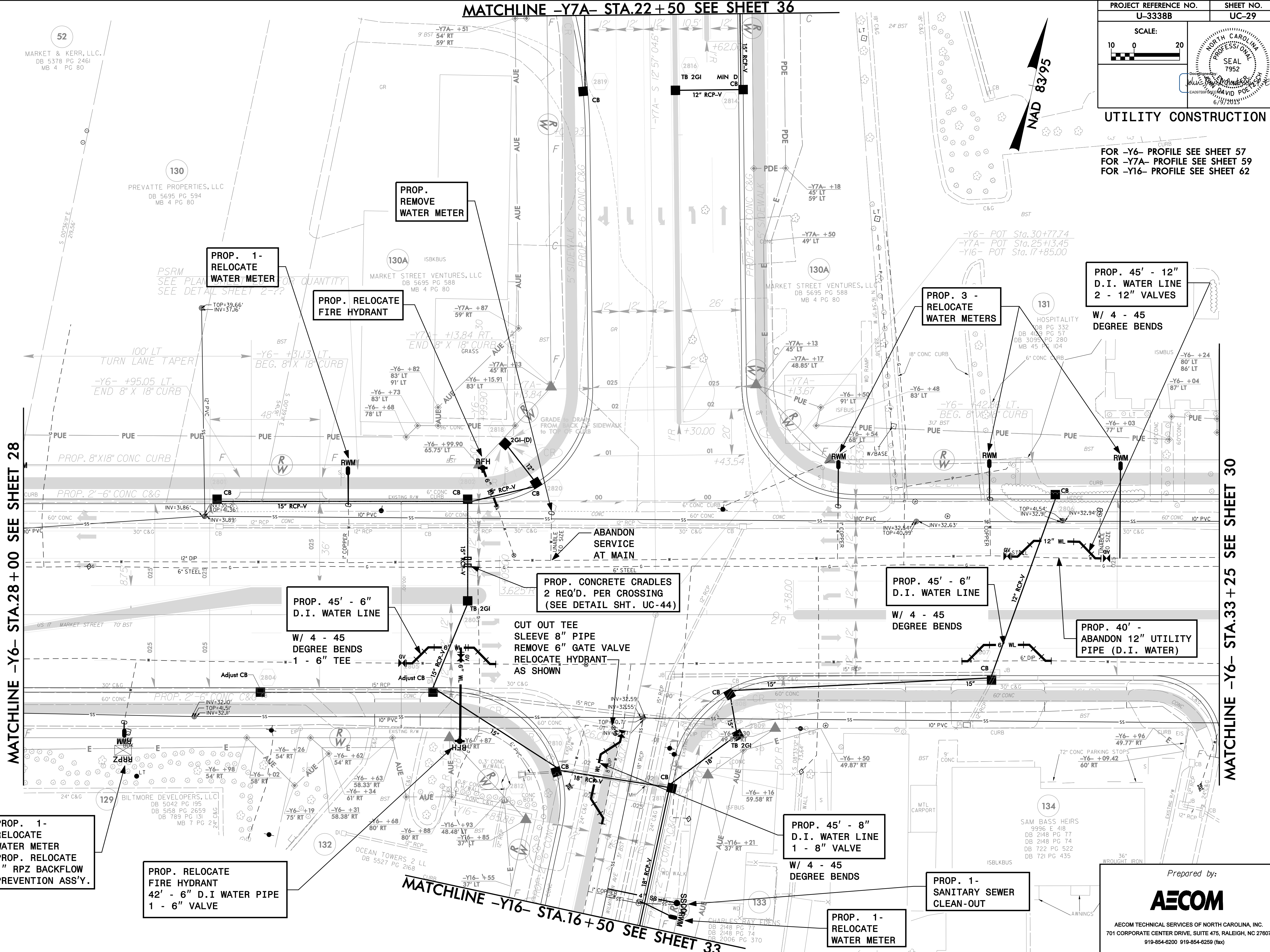
PROJECT REFERENCE NO. U-3338B	SHEET NO. UC-29
SCALE: 10 0 20	NORTH CAROLINA PROFESSIONAL SEAL 7952 DAVID POE 6/9/2015

UTILITY CONSTRUCTION

FOR -Y6- PROFILE SEE SHEET 57  
FOR -Y7A- PROFILE SEE SHEET 59  
FOR -Y16- PROFILE SEE SHEET 62

MATCHLINE -Y6- STA.28+00 SEE SHEET 28

MATCHLINE -Y6- STA.33+25 SEE SHEET 30



MATCHLINE -Y16- STA.16+50 SEE SHEET 33

PROP. 1 - RELOCATE WATER METER  
PROP. RELOCATE 1" RPZ BACKFLOW PREVENTION ASS'Y.

PROP. RELOCATE FIRE HYDRANT  
42' - 6" D.I. WATER PIPE  
1 - 6" VALVE

PROP. 45' - 6" D.I. WATER LINE  
W/ 4 - 45 DEGREE BENDS  
1 - 6" TEE

PROP. CONCRETE CRADLES  
2 REQ'D. PER CROSSING  
(SEE DETAIL SHT. UC-44)

CUT OUT TEE  
SLEEVE 8" PIPE  
REMOVE 6" GATE VALVE  
RELOCATE HYDRANT  
AS SHOWN

PROP. 45' - 6" D.I. WATER LINE  
W/ 4 - 45 DEGREE BENDS

PROP. 40' - ABANDON 12" UTILITY PIPE (D.I. WATER)

PROP. 45' - 8" D.I. WATER LINE  
1 - 8" VALVE  
W/ 4 - 45 DEGREE BENDS

PROP. 1 - SANITARY SEWER CLEAN-OUT

PROP. 1 - RELOCATE WATER METER

Prepared by:  
**AECOM**  
AECOM TECHNICAL SERVICES OF NORTH CAROLINA, INC.  
701 CORPORATE CENTER DRIVE, SUITE 475, RALEIGH, NC 27607  
919-854-6200 919-854-6259 (fax)