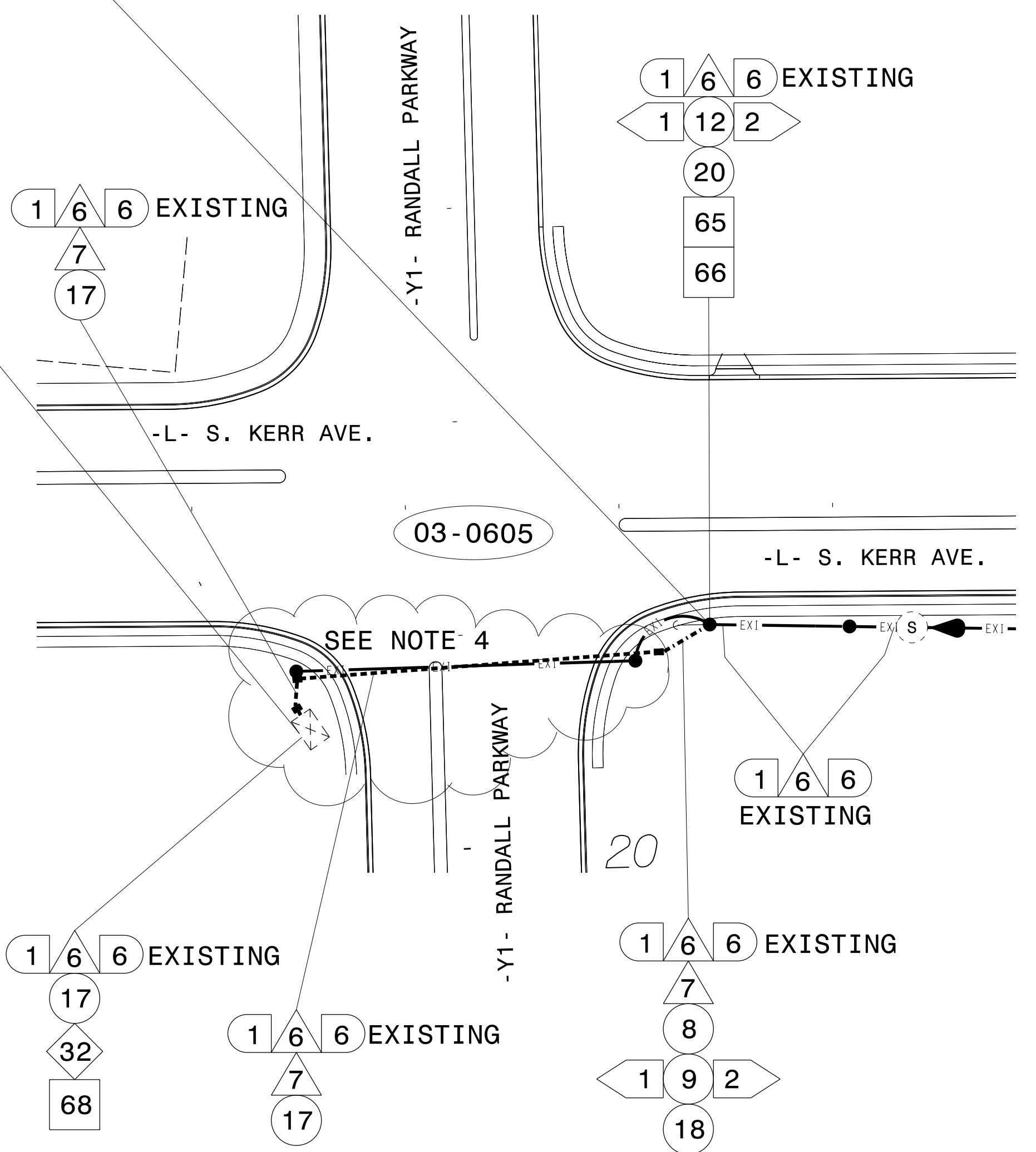


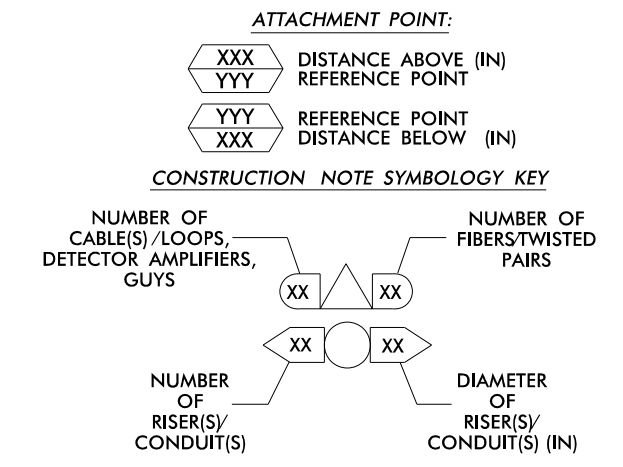
SEE NOTES 2 & 3



NOTES:

- 1. SEAL ALL CONDUIT ENDS WITH DUCT AND CONDUIT SEALER, AT ALL JUNCTION BOX/CABINET ENTRANCES.
2. DISCONNECT AND PULL BACK EXISTING 6-FIBER DROP CABLE FROM EXISTING CABINET TO POLE SHOWN. REROUTE DROP CABLE BACK TO CABINET AS SHOWN.
3. REMOVE MESSENGER SUPPORTING EXISTING DROP CABLE AFTER DROP CABLE IS REMOVED.
4. SIGNAL CABINET, CONDUIT AND JUNCTION BOXES INSTALLED PER SIGNAL PLANS UNLESS NOTED.

Table with 7 columns and 70 rows of numbered callouts (1-70) corresponding to the diagram, detailing installation and removal tasks for various cable and equipment components.



TMP FINAL

ATKINS 1616 EAST MILLBROOK ROAD, SUITE 310 RALEIGH, NORTH CAROLINA 27609 (919) 876-6888 NCBEES #F-0326

Project information block including title 'U-3338B - Kerr Avenue Cable Layout Plans', division '03 New Hanover County', plan date 'April 2014', and a signature/seal for Lisa M. Moon, Engineer.

30-DEC-2014 11:02 D:\Projects\atkins\proj\offices\cur\100036295_U3338B_Kerr_Sig_ITS\CR\U3338B_CL_01_FINAL.dgn