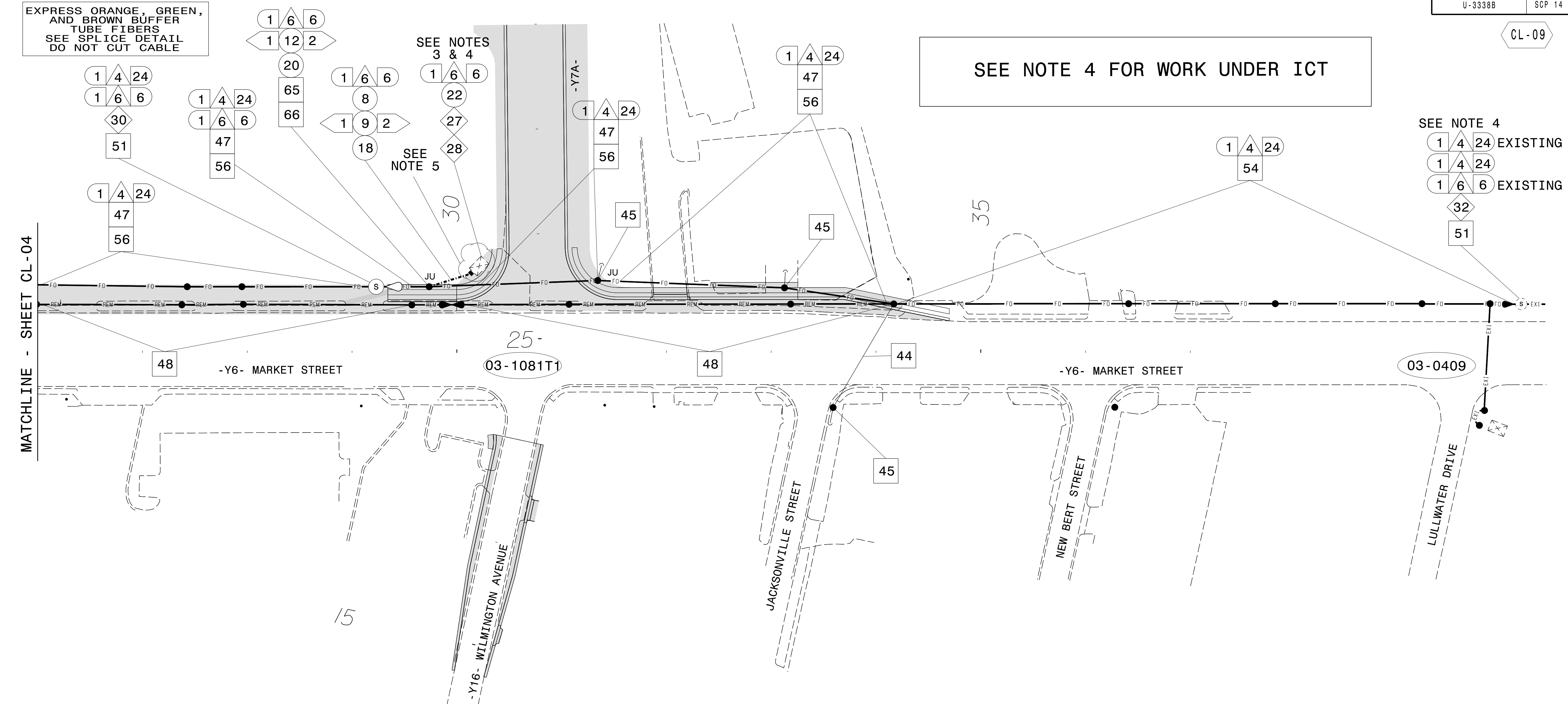


CL-09

EXPRESS ORANGE, GREEN,
AND BROWN BUFFER
TUBE FIBERS
SEE SPLICE DETAIL
DO NOT CUT CABLE

SEE NOTE 4 FOR WORK UNDER ICT

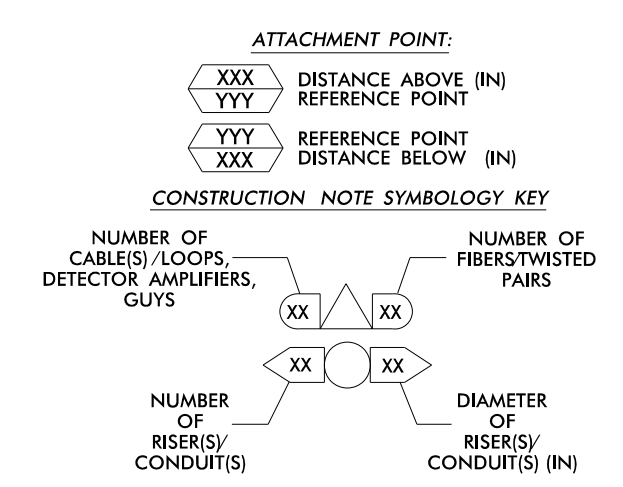
SEE NOTE 4
1 4 24 EXISTING
1 4 24
1 6 6 EXISTING
32
51



NOTES:

- 1. UNLESS OTHERWISE NOTED:
- ATTACH NEW MESSENGER CABLE 40" BELOW POWER.
- ATTACH ON FRONT SIDE (FS) OF POLE.
2. SEAL ALL CONDUIT ENDS WITH DUCT AND CONDUIT SEALER, AT ALL JUNCTION BOX/CABINET ENTRANCES.
3. INCORPORATE NEW SIGNAL INSTALLATION DIRECTLY INTO PROPOSED NETWORK ON PROPOSED ETHERNET CHANNEL.
4. SPLICE NEW FIBER OPTIC INTO EXISTING FIBER OPTIC SYSTEM AT THE END OF TMP PHASE II, STEP 2. (WORK UNDER ICT) SEE CL-10 FOR ADDITIONAL INFORMATION.
5. SIGNAL CABINET, CONDUIT, AND JUNCTION BOX INSTALLED PER TEMPORARY SIGNAL PLAN UNLESS NOTED.

Table with 4 columns and 12 rows of numbered callouts (1-60) and their corresponding descriptions for cable installation and equipment.



TMP PHASE I - PHASE II, Steps 1 & 2

ATKINS 1616 EAST MILLBROOK ROAD, SUITE 310 RALEIGH, NORTH CAROLINA 27609 (919) 876-6888 NCBEES #F-0326

Project information block including logos for North Carolina Professional Engineer Melissa B. Toth, project title 'U-3338B - Kerr Avenue Cable Layout Plans', dates, and revision table.

15-Jul-2015 08:45 D:\atkins\proj\cl-09\cl-09.dgn U-3338B Kerr Sig-ITS\CR\U3338B.CL-09.dgn