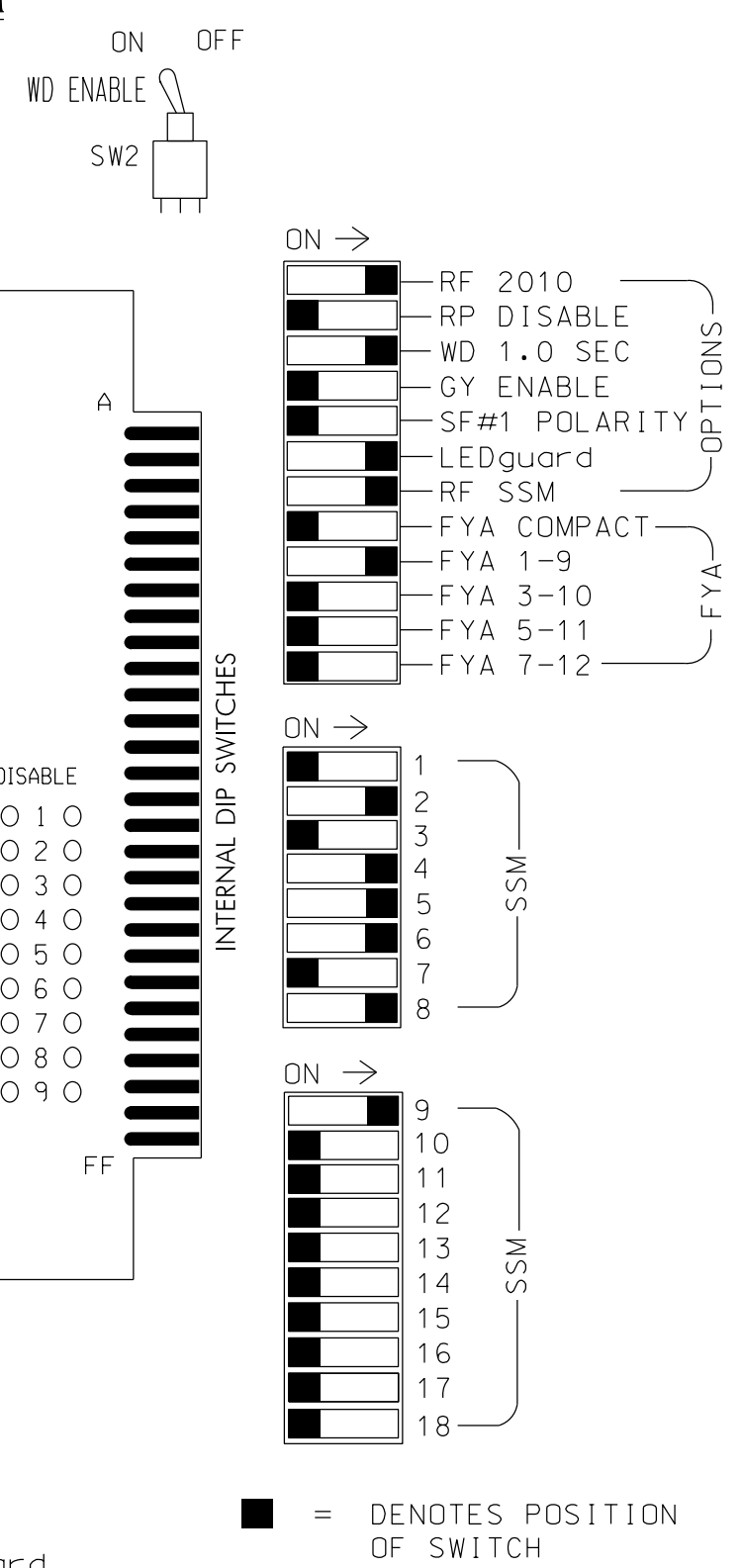
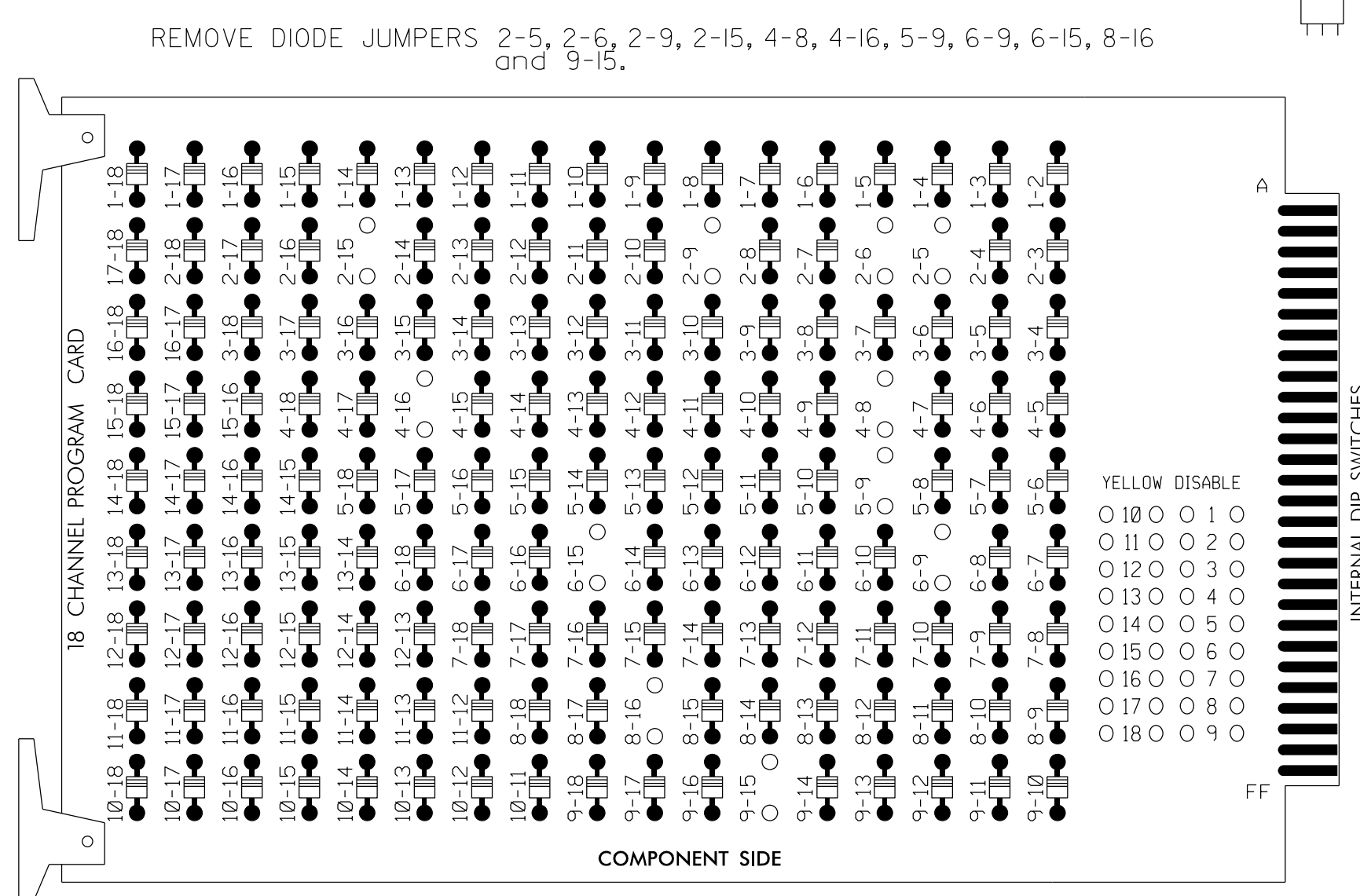


EDI MODEL 2018ECL-NC CONFLICT MONITOR PROGRAMMING DETAIL

(remove jumpers and set switches as shown)



NOTES:

1. Card is provided with all diode jumpers in place. Removal of any jumper allows its channels to run concurrently.
2. Ensure jumpers SEL2-SEL5 and SEL9 are present on the monitor board.
3. Ensure that Red Enable is active at all times during normal operation.
4. Connect serial cable from conflict monitor to comm. port 1 of 2070 controller. Ensure conflict monitor communicates with 2070.

NOTES

1. To prevent "flash-conflict" problems, insert red flash program blocks for all unused vehicle load switches in the output file. The installer shall verify that signal heads flash in accordance with the Signal Plans.
2. Program phases 4 and 8 for Dual Entry.
3. Enable Simultaneous Gap-Out for all phases.
4. Program phases 2 and 6 for Start Up In Green.
5. Program phases 6 and 8 for 'STARTUP PED CALL'.
6. Program phases 2 and 6 for Yellow Flash, and overlap 1 as Wag Overlaps.
7. The cabinet and controller are part of the Wilmington Signal System.

EQUIPMENT INFORMATION

CONTROLLER.....2070E
 CABINET.....332 /W/ AUX
 SOFTWARE.....ECONOLITE OASIS
 CABINET MOUNT.....BASE
 OUTPUT FILE POSITIONS...18 WITH AUX. OUTPUT FILE
 LOAD SWITCHES USED.....S2,S5,S7,S8,S9,S11,S12,AUX S1.
 PHASES USED.....2,4,5,6,6PED,8,8PED.
 OVERLAP "A".....2
 OVERLAP "B".....NOT USED
 OVERLAP "C".....NOT USED
 OVERLAP "D".....NOT USED

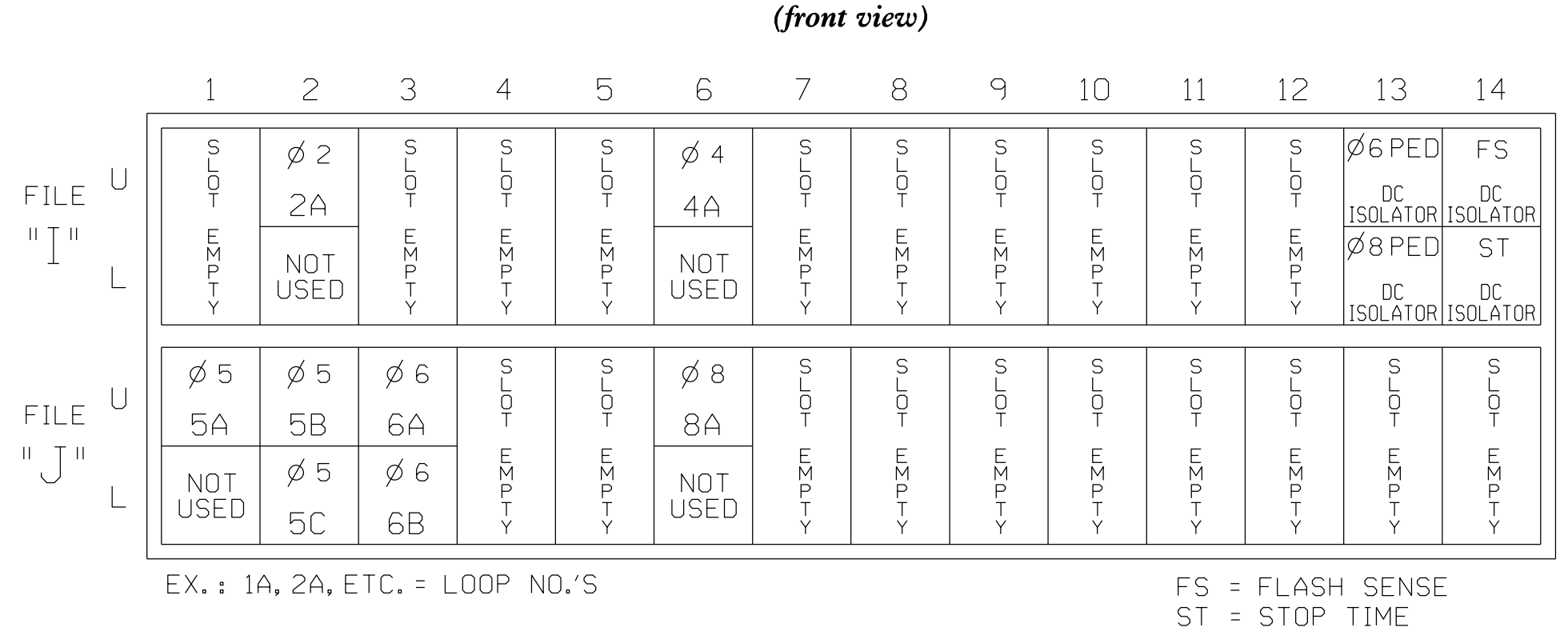
PROJECT REFERENCE NO.	SHEET NO.
U-3338B	Sig. 7.1

SIGNAL HEAD HOOK-UP CHART

LOAD SWITCH NO.	S1	S2	S3	S4	S5	S6	S7	S8	S9	S10	S11	S12	AUX S1	AUX S2	AUX S3	AUX S4	AUX S5	AUX S6
CMU CHANNEL NO.	1	2	13	3	4	14	5	6	15	7	8	16	9	10	17	11	12	18
PHASE	1	2	2 PED	3	4	4 PED	5	6	6 PED	7	8	8 PED	OLA	OLB	SPARE	OLC	OLD	SPARE
SIGNAL HEAD NO.	NU	21,22	NU	NU	41,42	NU	42	51,52	62,63	P61, P62	NU	81,82	P81, P82	61	NU	NU	NU	NU
RED		128			101				134			107						
YELLOW		129			102				135			108						
GREEN		130			103				136			109						
RED ARROW									131									A121
YELLOW ARROW									132	132								A122
FLASHING YELLOW ARROW																		A123
GREEN ARROW									133	133								
Hand													119					110
Walker													121					112

NU = Not Used
 * See pictorial of head wiring in detail below.

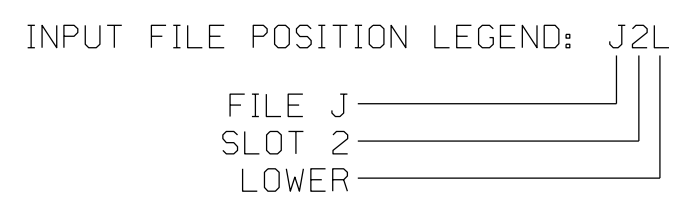
INPUT FILE POSITION LAYOUT



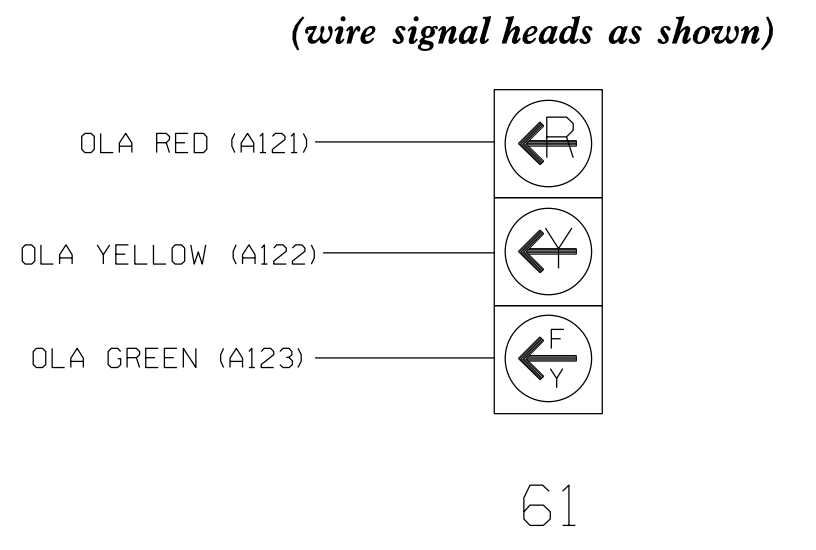
INPUT FILE CONNECTION & PROGRAMMING CHART

LOOP NO.	LOOP TERMINAL	INPUT FILE POS.	PIN NO.	INPUT ASSIGNMENT NO.	DETECTOR NO.	NEMA PHASE	CALL	EXTEND	FULL TIME DELAY	STRETCH TIME	DELAY TIME
2A	TB2-5,6	I2U	39	1	2	2	Y	Y			
4A	TB4-9,10	I6U	41	3	4	4	Y	Y			
5A	TB3-1,2	J1U	55	17	5	5	Y	Y			
5B	TB3-5,6	J2U	40	2	6	5	Y	Y			
5C	TB3-7,8	J2L	44	6	16	5	Y	Y			15
6A	TB3-9,10	J3U	64	26	36	6	Y	Y			
6B	TB3-11,12	J3L	77	39	46	6	Y	Y			
8A	TB5-9,10	J6U	42	4	8	8	Y	Y			
PED PUSH BUTTONS											
P61,P62	TB8-7,9	I13U	68	30	PED 6	6 PED					
P81,P82	TB8-8,9	I13L	70	32	PED 8	8 PED					

NOTE:
 INSTALL DC ISOLATORS IN INPUT FILE SLOT I13.



3 SECTION FYA SIGNAL WIRING DETAIL



COUNTDOWN PEDESTRIAN SIGNAL OPERATION

Countdown Ped Signals are required to display timing only during Ped Clearance Interval. Consult Ped Signal Module User's manual for instructions on selecting this feature.

THIS ELECTRICAL DETAIL IS FOR THE SIGNAL DESIGN: 03-1082T1&T2
 DESIGNED: June 2014
 SEALED: December 19, 2014
 REVISED:

OVERLAP PROGRAMMING DETAIL

(program controller as shown below)

FROM MAIN MENU PRESS '8' (OVERLAPS), THEN '1' (VEHICLE OVERLAP SETTINGS).

```

PAGE 1: VEHICLE OVERLAP 'A' SETTINGS
PHASE:      12345678910111213141516
VEH OVL PARENTS: X
VEH OVL NOT VEH:
VEH OVL NOT PED:
VEH OVL GRN EXT:
STARTUP COLOR: RED - YELLOW - GREEN
FLASH COLORS: RED - YELLOW X GREEN
SELECT VEHICLE OVERLAP OPTIONS: (Y/N)
FLASH YELLOW IN CONTROLLER FLASH?...Y
GREEN EXTENSION (0-255 SEC)...0
YELLOW CLEAR (0=PARENT,3-25.5 SEC)...0
RED CLEAR (0=PARENT,0.1-25.5 SEC)...0
OUTPUT AS PHASE # (0=NONE, 1-16)...0
    
```

← NOTICE GREEN FLASH

OVERLAP PROGRAMMING COMPLETE

Signal Upgrade - Temporary Designs 1 & 2

	SR 1175 (Kerr Avenue) at Cinema Drive/ Shopping Center Driveway		SEAL MELISSA B. TOTH ENGINEER
	Division 03 New Hanover County Wilmington	Prepared for the Offices of: 	
PLAN DATE: June 2014 PREPARED BY: AM Encarnacion	REVIEWED BY: LM Moon REVIEWED BY: MB Toth	12/19/2014 DATE	
REVISIONS		INIT.	DATE

ATKINS 1616 EAST MILLBROOK ROAD, SUITE 310
 RALEIGH, NORTH CAROLINA 27609
 (919) 876-6888 NCBEES #F-0326

750 N. Greenfield Pkwy, Garner, NC 27529