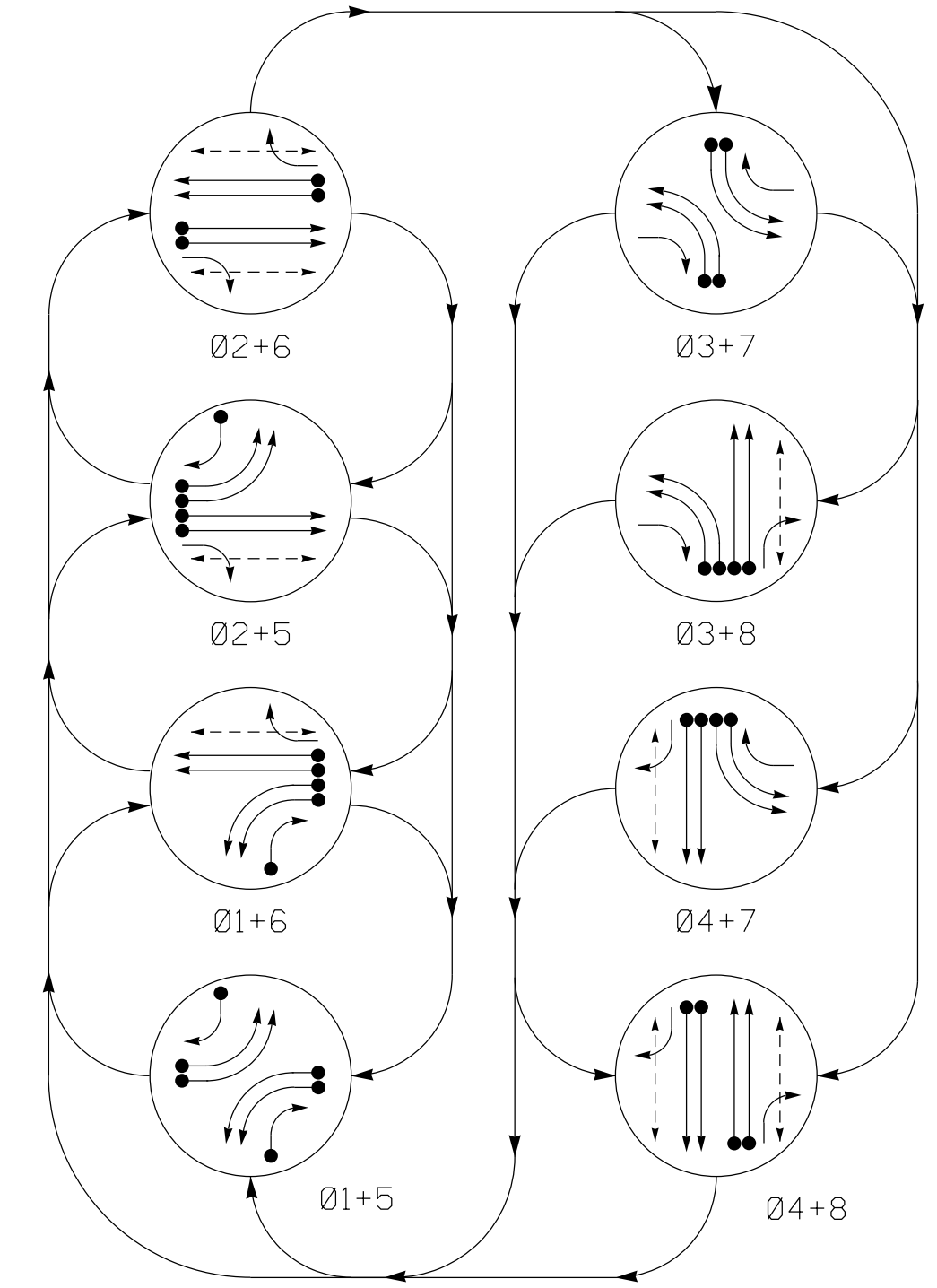


PHASING DIAGRAM



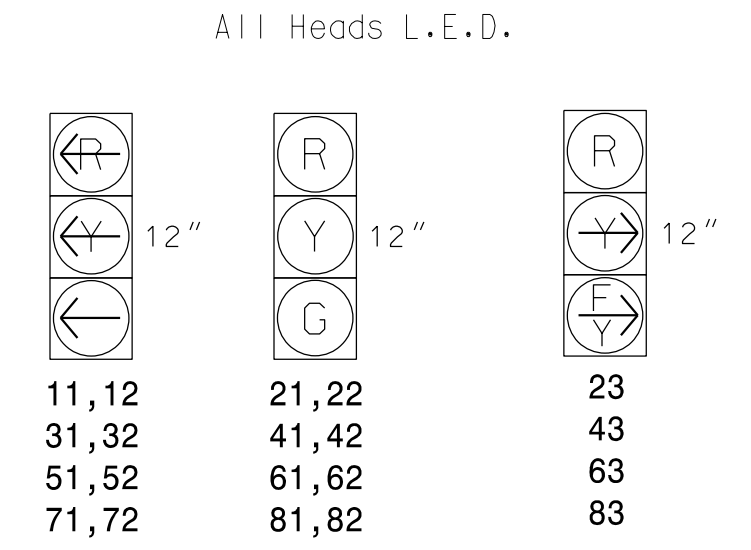
PHASING DIAGRAM DETECTION LEGEND

- DETECTED MOVEMENT (solid arrow with dot)
UNDETECTED MOVEMENT (OVERLAP) (dashed arrow)
UNSIGNALIZED MOVEMENT (dotted arrow)
PEDESTRIAN MOVEMENT (arrow with person icon)

TABLE OF OPERATION

Table with columns for SIGNAL FACE and PHASE (0-8), detailing signal states (R, G, Y, F, W, DRK) for various signal faces like 11,12, 21,22, etc.

SIGNAL FACE I.D.



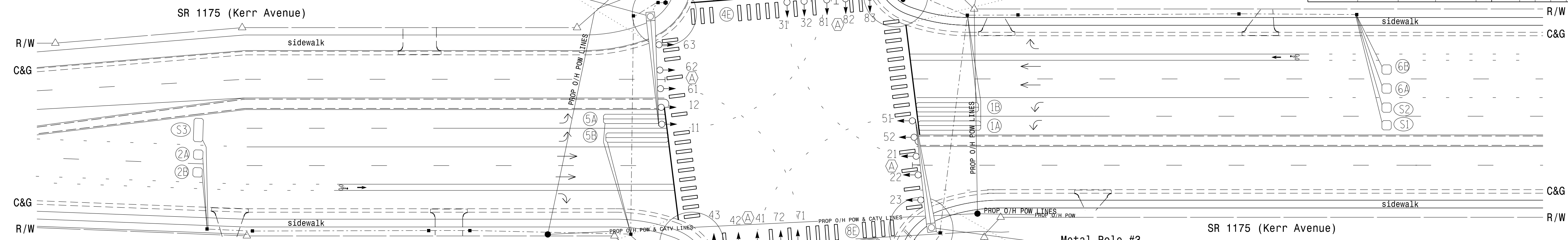
8 Phase Fully Actuated (Wilmington Signal System)

NOTES

- 1. Refer to "Roadway Standard Drawings NCDOT" dated January 2012...
2. Do not program signal for late night flashing operation...
3. Phase 1 and/or phase 5 may be lagged.
...
12. Signal system data: Controller Asset #0605.

OASIS 2070 LOOP & DETECTOR INSTALLATION CHART

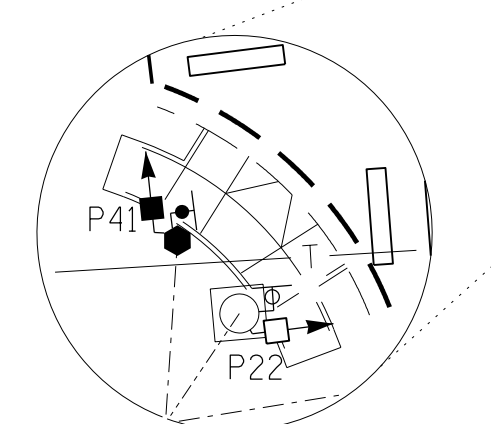
Table with columns for LOOP, SIZE (FT), DISTANCE FROM STOPBAR (FT), TURNS, NEW LOOP, PHASE, CALLING, EXTENSION, FULL TIME DELAY, STRETCH TIME, DELAY TIME, SYSTEM LOOP, NEW CARD. Lists loops 1A through S6.



OASIS 2070 TIMING CHART

Timing chart table with columns for FEATURE and PHASE (1-8), listing values for Min Green, Extension, Max Green, Yellow Clearance, Red Clearance, Red Revert, Walk, Don't Walk, Seconds Per Actuation, Max Variable Initial, Time Before Reduction, Time To Reduce, Minimum Gap, Recall Mode, Vehicle Call Memory, Dual Entry, and Simultaneous Gap.

* These values may be field adjusted. Do not adjust Min Green and Extension times for phases 2 and 6 lower than what is shown. Min Green for all other phases should not be lower than 4 seconds.



LEGEND section defining symbols for PROPOSED and EXISTING elements: Junction Box, Oversize Junction Box, Directional Drill, 2-in Underground Conduit, Directional Arrow, UG Telephone Line, Drainage Pipe, Right of Way, Street Name Sign, Traffic Signal Head, Sign, Pedestrian Signal Head, Push Button & Sign, Metal Pole with Mastarm, Type II Signal Pedestal, Inductive Loop Detector, Signal Pole with Guy, Signal Pole with Sidewalk Guy, Controller & Cabinet.

Signal Upgrade - Final Design

Professional seal and title block for Melisa B. Toth, Engineer, North Carolina Professional Engineer #025892. Includes project title 'SR 1175 (Kerr Avenue) at Randall Parkway', division '03 New Hanover County', and dates 'June 2014' and '12/19/2014'.

ATKINS 1616 EAST MILLBROOK ROAD, SUITE 310 RALEIGH, NORTH CAROLINA 27609 (919) 876-8888 NCEES #F-0326

13-JUL-2015 10:18 D:\Transportation\Projects\Kerr\10036295_U3338B_Kerr_Sig_LTS\ASignals\03-0605.dgn