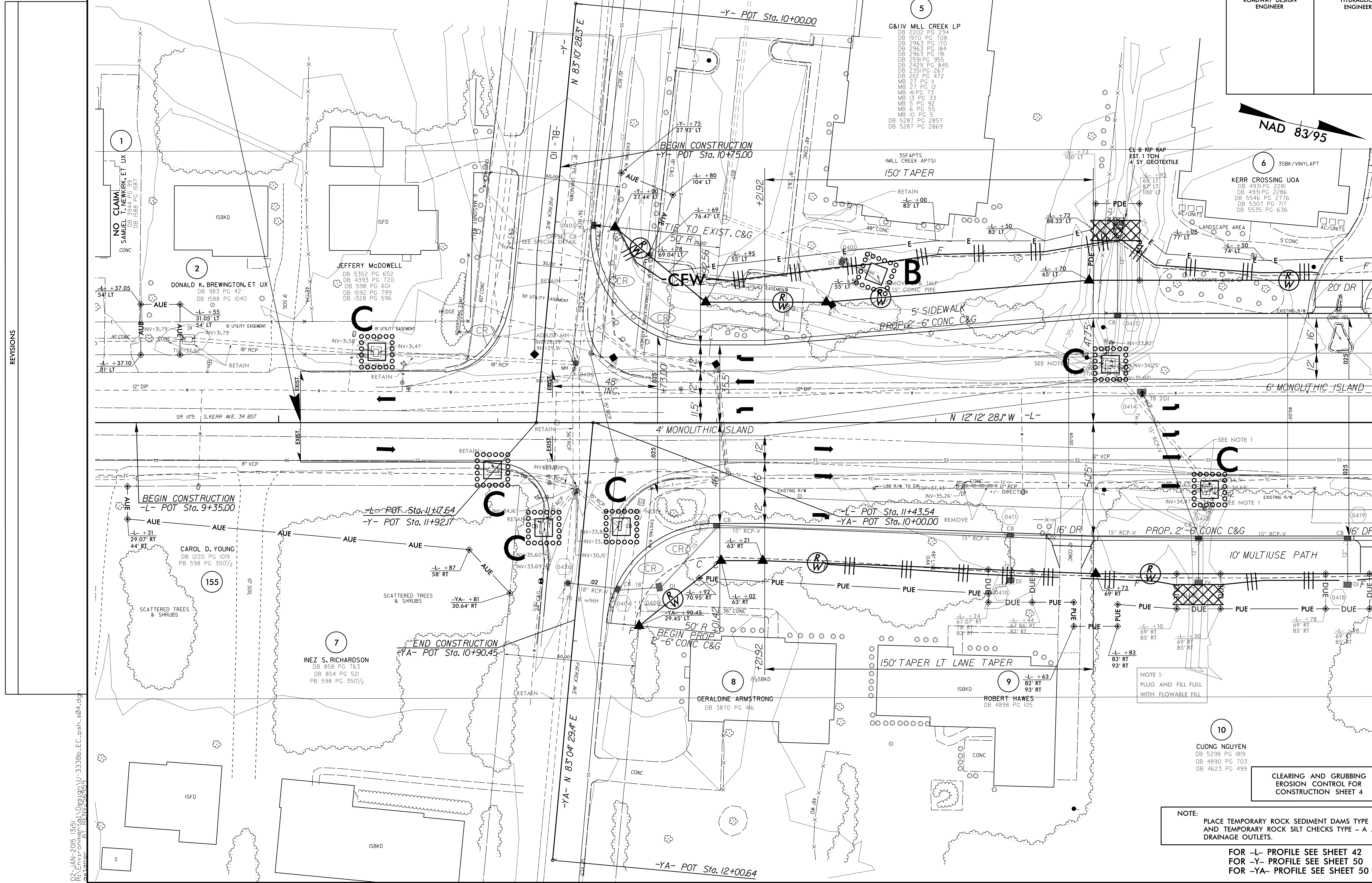


PROJECT REFERENCE NO.	SHEET NO.
U-3338B	EC-4/CONST.4
RW SHEET NO.	
ROADWAY DESIGN ENGINEER	HYDRAULICS ENGINEER

STA. 10+10.00 -L- BEGIN TIP PROJECT U-3338B

NAD 83/95



REVISIONS

MATCHLINE -L- STA.15+00 SEE SHEET 5

8/17/99  
 9/21 JAN-2015 13:51  
 R:\enviroment\proj\U-3338b-EC.upsh.s04.dgn  
 155

- 5
- G&IV MILL CREEK LP
  - DB 2202 PG 234
  - DB 1970 PG 708
  - DB 2963 PG 170
  - DB 2963 PG 184
  - DB 2963 PG 191
  - DB 2591 PG 955
  - DB 2429 PG 845
  - DB 2351 PG 267
  - DB 2112 PG 472
  - MB 27 PG 11
  - MB 27 PG 12
  - MB 4 PG 73
  - MB 13 PG 33
  - MB 5 PG 92
  - MB 6 PG 55
  - MB 10 PG 5
  - DB 5287 PG 2857
  - DB 5287 PG 2869

- 6
- 35BK/VINYLAFT
  - KERR CROSSING UOA
  - DB 4931 PG 2281
  - DB 4931 PG 2286
  - DB 5307 PG 717
  - DB 5535 PG 636

- 2
- DONALD K. BREWINGTON, ET UX
  - DB 983 PG 42
  - DB 1588 PG 1040

- JEFFERY McDOWELL
- DB 5352 PG 652
  - DB 4393 PG 720
  - DB 5398 PG 601
  - DB 1592 PG 799
  - DB 1328 PG 596

- 155
- CAROL D. YOUNG
  - DB 1220 PG 1019
  - PB 598 PG 350 1/2

- 7
- INEZ S. RICHARDSON
  - DB 858 PG 1631
  - DB 854 PG 521
  - PB 598 PG 350 1/2

- 8
- GERALDINE ARMSTRONG
  - DB 3870 PG 416

- 9
- ROBERT HAWES
  - DB 4898 PG 105

- 10
- CUONG NGUYEN
  - DB 5298 PG 1819
  - DB 4890 PG 703
  - DB 4623 PG 499

NOTE 1:  
 PLUG AND FILL FULL WITH FLOWABLE FILL

NOTE:  
 PLACE TEMPORARY ROCK SEDIMENT DAMS TYPE - B AND TEMPORARY ROCK SILT CHECKS TYPE - A AT DRAINAGE OUTLETS.

FOR -L- PROFILE SEE SHEET 42  
 FOR -Y- PROFILE SEE SHEET 50  
 FOR -YA- PROFILE SEE SHEET 50