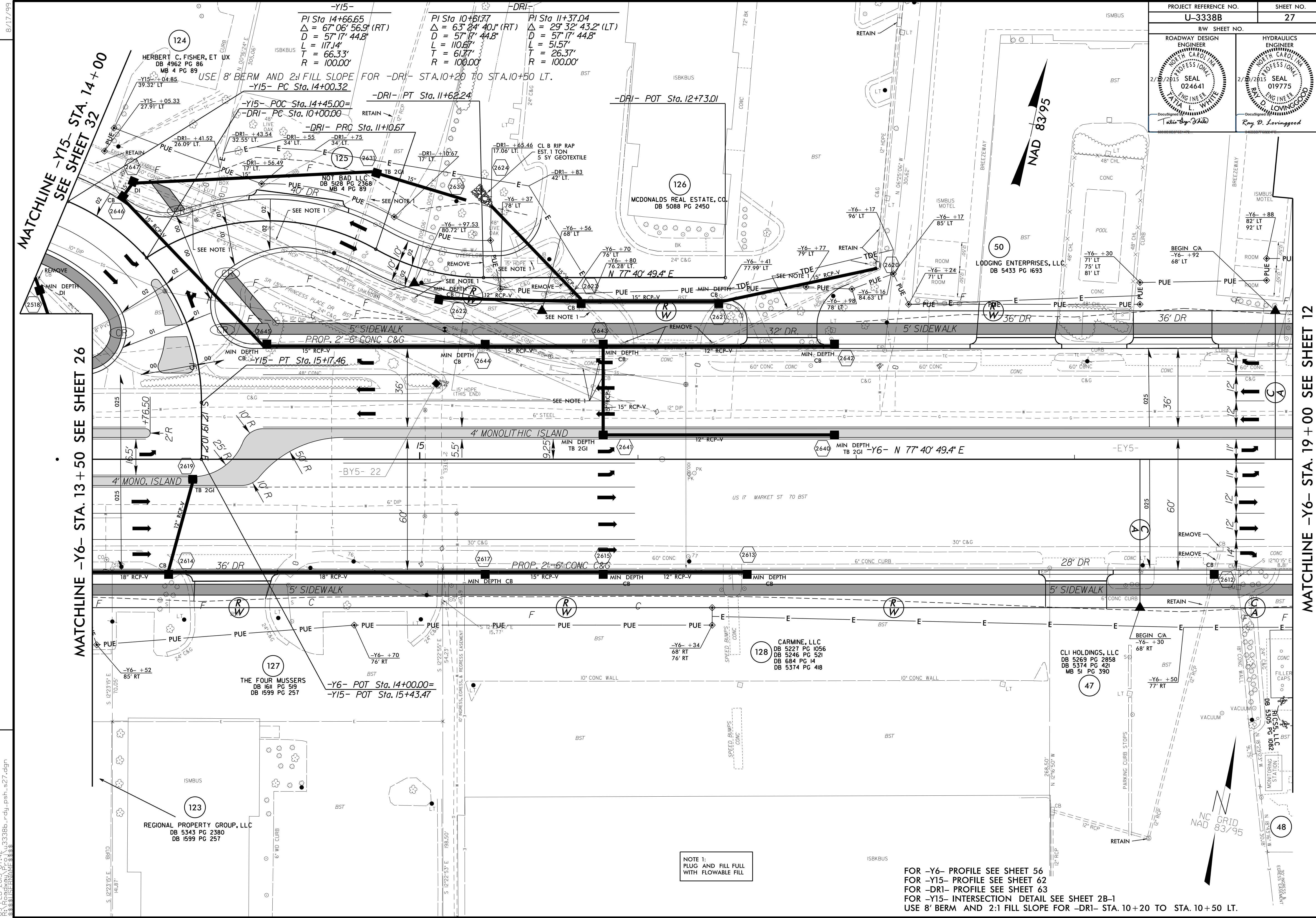


PROJECT REFERENCE NO. U-3338B	SHEET NO. 27
RW SHEET NO.	
ROADWAY DESIGN ENGINEER TATIANA WHITE SEAL 024641	HYDRAULICS ENGINEER RAY D. LIVINGOOD SEAL 019775



REVISIONS

MATCHLINE -Y15- STA. 14+00
SEE SHEET 32

MATCHLINE -Y6- STA. 13+50
SEE SHEET 26

MATCHLINE -Y6- STA. 19+00
SEE SHEET 12

-Y15-
 PI Sta 14+66.65
 $\Delta = 67^{\circ}06'56.9''$ (RT)
 $D = 57^{\circ}17'44.8''$
 $L = 117.14'$
 $T = 66.33'$
 $R = 100.00'$

-DRI-
 PI Sta 10+61.77
 $\Delta = 63^{\circ}24'40.1''$ (RT)
 $D = 57^{\circ}17'44.8''$
 $L = 110.67'$
 $T = 61.77'$
 $R = 100.00'$

PI Sta 11+37.04
 $\Delta = 29^{\circ}32'43.2''$ (LT)
 $D = 57^{\circ}17'44.8''$
 $L = 51.57'$
 $T = 26.37'$
 $R = 100.00'$

-Y6-
 POT Sta. 14+00.00 =
 -Y15- POT Sta. 15+43.47

NOTE 1:
PLUG AND FILL FULL
WITH FLOWABLE FILL

FOR -Y6- PROFILE SEE SHEET 56
 FOR -Y15- PROFILE SEE SHEET 62
 FOR -DRI- PROFILE SEE SHEET 63
 FOR -Y15- INTERSECTION DETAIL SEE SHEET 2B-1
 USE 8' BERM AND 2:1 FILL SLOPE FOR -DRI- STA. 10+20 TO STA. 10+50 LT.

03-FEB-2015 07:42 3338B_rdl.psh.s27.dgn
 8/17/99