



PROJECT REFERENCE NO. U-3338B	SHEET NO. 22
RW SHEET NO.	
ROADWAY DESIGN ENGINEER 	HYDRAULICS ENGINEER 
Tobin D. White	Roy D. Loringgood

RICHARD A. BROWN, HEIRS
DB 719 PG 521

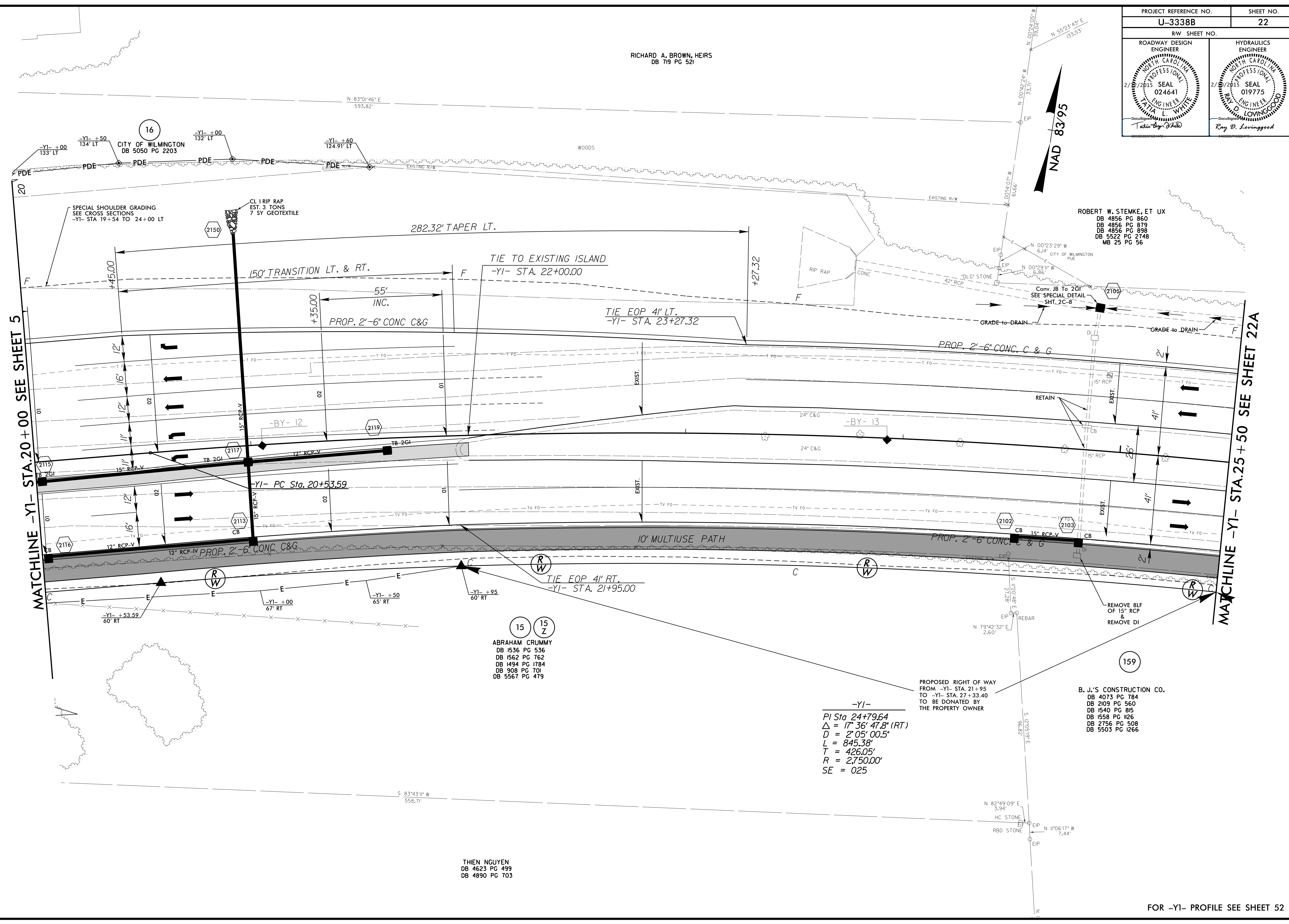
ROBERT W. STEMKE, ET UX
DB 4856 PG 860
DB 4856 PG 879
DB 4856 PG 898
DB 5522 PG 2148
MB 25 PG 56

15 **15**
Z
ABRAHAM CRUMMY
DB 1536 PG 536
DB 1562 PG 762
DB 1494 PG 1784
DB 908 PG 701
DB 5567 PG 479

159
B. J.'S CONSTRUCTION CO.
DB 4073 PG 784
DB 2109 PG 560
DB 1540 PG 815
DB 1558 PG 1126
DB 2756 PG 508
DB 5503 PG 1266

-YI-
PI Sta 24+79.64
 $\Delta = 17' 36' 47.8" (RT)$
 $D = 2' 05' 00.5"$
 $L = 845.38'$
 $T = 426.05'$
 $R = 2,750.00'$
 $SE = 025$

THIEN NGUYEN
DB 4623 PG 499
DB 4890 PG 703



MATCHLINE -YI- STA. 20 + 00 SEE SHEET 5

MATCHLINE -YI- STA. 25 + 50 SEE SHEET 22A

REVISIONS

8/17/99

27 JAN 2015 15:01 \\s01\3338b_rdl.psh.s22.dgn
3338B.DWG

FOR -YI- PROFILE SEE SHEET 52