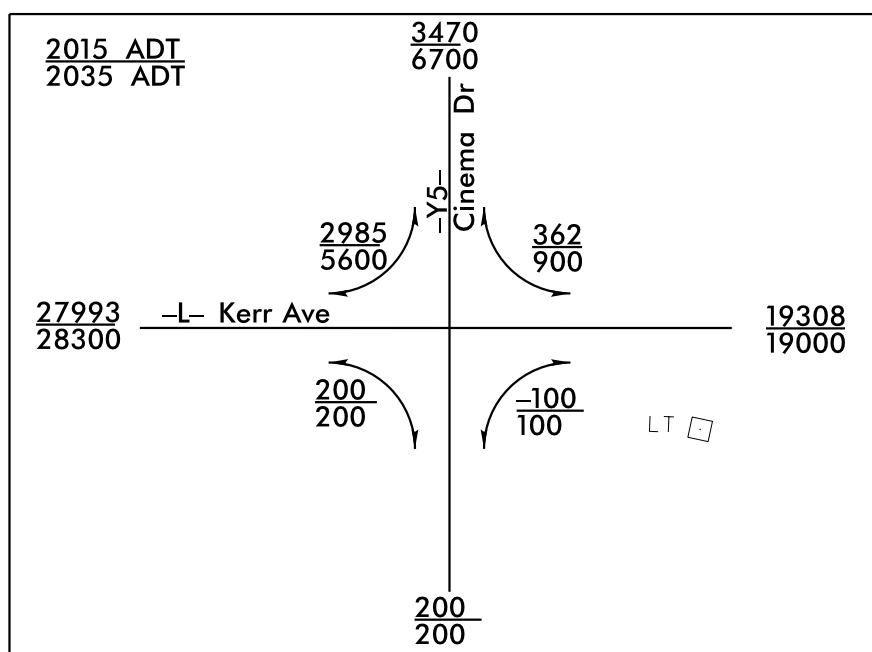
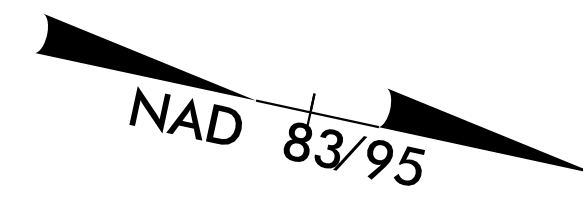


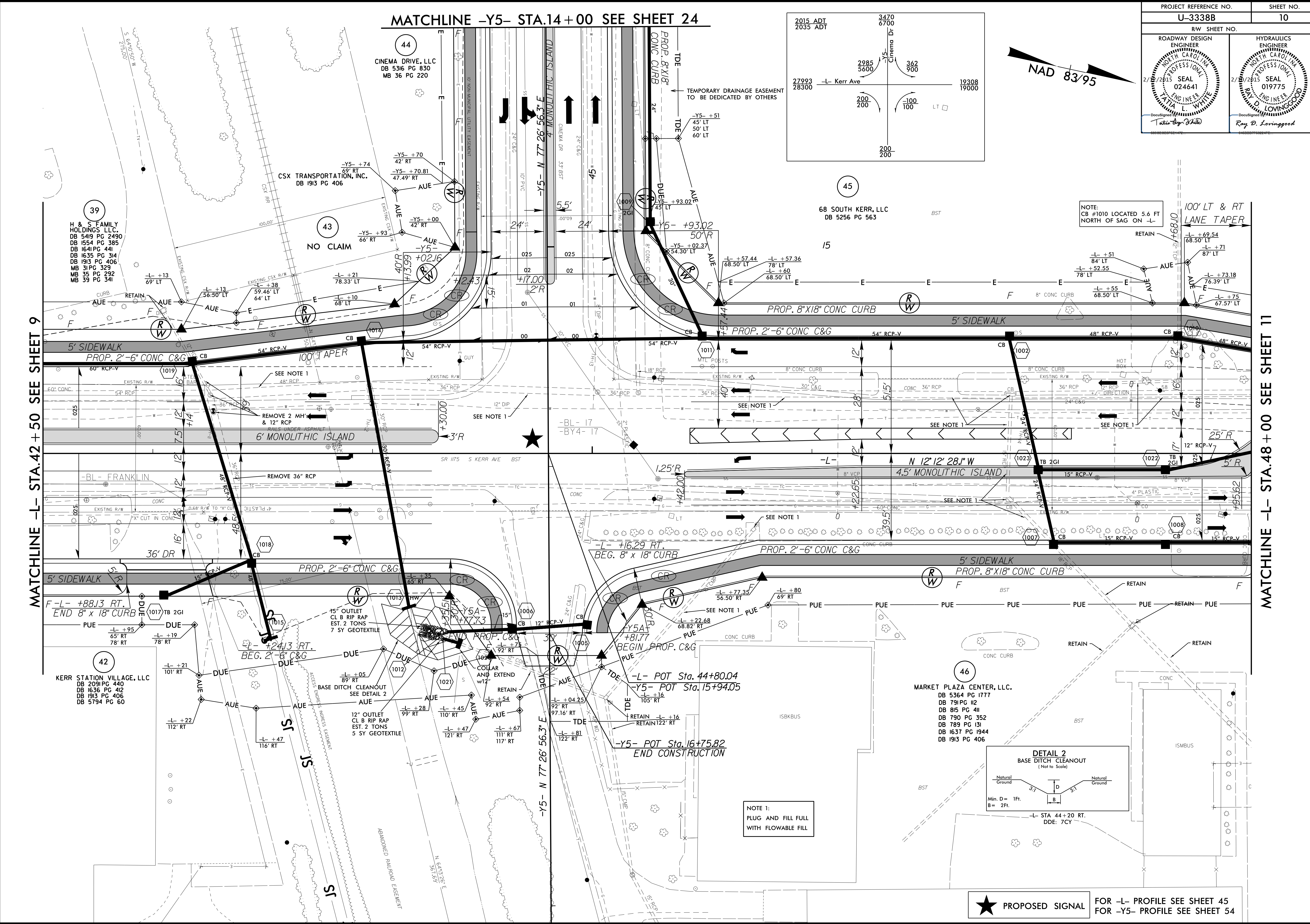
PROJECT REFERENCE NO. U-3338B	SHEET NO. 10
RW SHEET NO.	
ROADWAY DESIGN ENGINEER TAYLOR WHITE SEAL 024641	HYDRAULICS ENGINEER RAY D. LIVINGOOD SEAL 019775



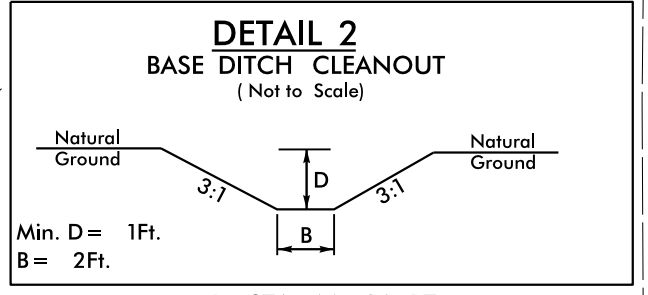
MATCHLINE -Y5- STA.14+00 SEE SHEET 24

MATCHLINE -L- STA.42+50 SEE SHEET 9

MATCHLINE -L- STA.48+00 SEE SHEET 11



NOTE:
CB #1010 LOCATED 5.6 FT NORTH OF SAG ON -L-
100' LT & RT LANE TAPER



NOTE 1:
PLUG AND FILL FULL WITH FLOWABLE FILL

★ PROPOSED SIGNAL FOR -L- PROFILE SEE SHEET 45 FOR -Y5- PROFILE SEE SHEET 54

REVISIONS

8/17/99

16-JAN-2015 08:43 33338b_rdl.psh.s10.dgn