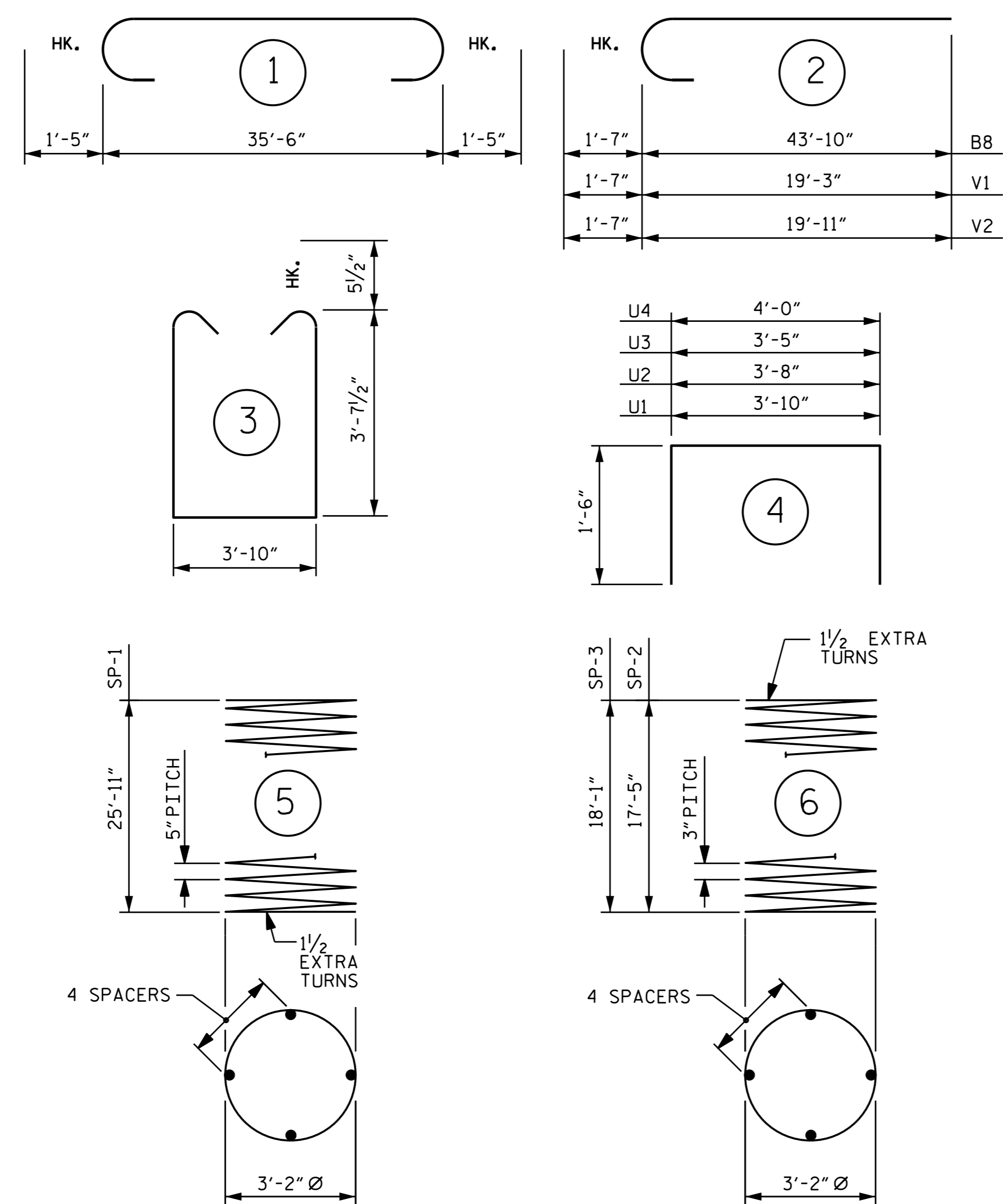
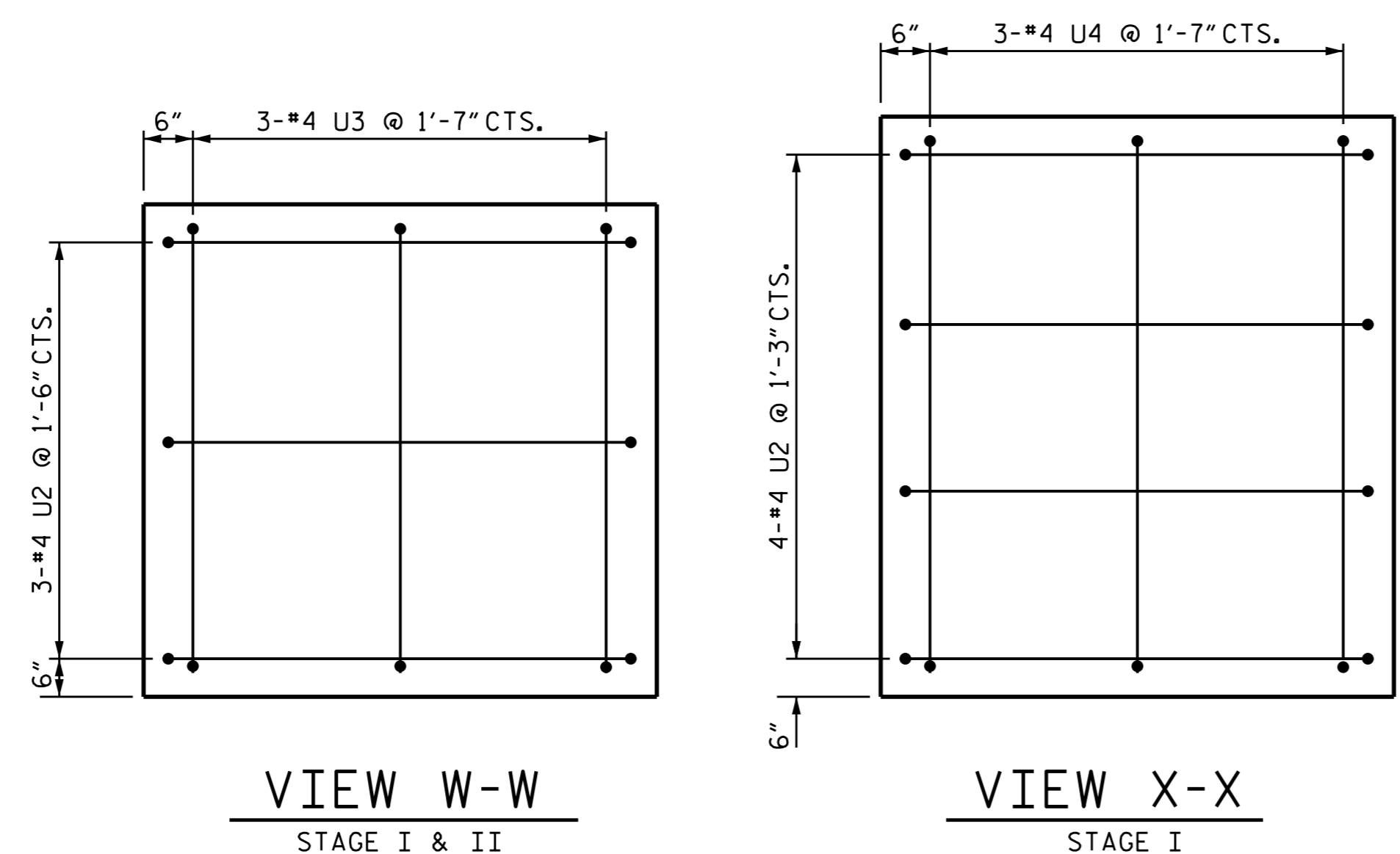


BAR TYPES



** THE SP-1 SPIRAL REINFORCING STEEL SHALL BE W31 OR D-31 COLD DRAWN WIRE OR #5 PLAIN OR DEFORMED BAR.
 * THE SP-2 & SP-3 SPIRAL REINFORCING STEEL SHALL BE W20 OR D-20 COLD DRAWN WIRE OR #4 PLAIN OR DEFORMED BAR.

ALL BAR DIMENSIONS ARE OUT TO OUT.



VIEW W-W
STAGE I & II

VIEW X-X
STAGE I

BILL OF MATERIAL

BENT #2

STAGE I (LEFT SIDE)						STAGE I (RIGHT SIDE)						STAGE II					
BAR	NO.	SIZE	TYPE	LENGTH	WEIGHT	BAR	NO.	SIZE	TYPE	LENGTH	WEIGHT	BAR	NO.	SIZE	TYPE	LENGTH	WEIGHT
B1	8	#10	STR	35'-8"	1228	B1	8	#10	STR	35'-8"	1228	B7	16	#11	STR	57'-2"	4860
B2	8	#10	1	38'-4"	1320	B2	8	#10	1	38'-4"	1320	B8	16	#11	2	45'-5"	3861
B3	6	#5	STR	35'-8"	223	B3	6	#5	STR	35'-8"	223	B9	12	#5	STR	53'-9"	673
B4	8	#4	STR	25'-3"	135	B4	8	#4	STR	25'-3"	135	B10	8	#4	STR	26'-8"	143
B5	8	#4	STR	4'-3"	23	B5	8	#4	STR	4'-3"	23	B11	16	#4	STR	18'-0"	192
B6	3	#4	STR	3'-10"	8	B6	3	#4	STR	3'-10"	8	B12	8	#11	STR	43'-10"	1863
M1	28	#11	STR	36'-3"	5393	M1	28	#11	STR	36'-3"	5393	M1	84	#11	STR	36'-3"	16178
S1	54	#5	3	12'-0"	676	S1	54	#5	3	12'-0"	676	S1	107	#5	3	12'-0"	1339
U1	40	#4	4	6'-10"	183	U1	40	#4	4	6'-10"	183	U1	116	#4	4	6'-10"	529
U2	7	#4	4	6'-8"	31	U2	7	#4	4	6'-8"	31	U2	6	#4	4	6'-8"	27
U3	3	#4	4	6'-5"	13	U3	3	#4	4	6'-5"	13	U3	6	#4	4	6'-5"	26
U4	3	#4	4	7'-0"	14	U4	3	#4	4	7'-0"	14						
V1	28	#11	2	20'-10"	3099	V1	28	#11	2	20'-10"	3099	V2	84	#11	2	21'-6"	9595

REINFORCING STEEL FOR BENT No. 2						REINFORCING STEEL FOR BENT No. 2						REINFORCING STEEL FOR BENT No. 2					
12,346 LBS.						12,346 LBS.						38986 LBS.					
SP-1	2	**	5	625'-5"	1305	SP-1	2	**	5	625'-5"	1305	SP-1	6	**	5	625'-5"	3914
SP-2	2	*	6	698'-7"	933	SP-2	2	*	6	698'-7"	933	SP-2	6	*	6	725'-7"	2908
SP-1						SP-2						SP-3					
2238 LBS.						2238 LBS.						6822 LBS.					
CLASS A CONCRETE BREAKDOWN						CLASS A CONCRETE BREAKDOWN						CLASS A CONCRETE BREAKDOWN					
POUR #2 (COLUMNS) 12.2 C.Y.						POUR #2 (COLUMNS) 12.2 C.Y.						POUR #2 (COLUMNS) 38.1 C.Y.					
POUR #3 (CAP) 23.9 C.Y.						POUR #3 (CAP) 23.9 C.Y.						POUR #3 (CAP) 68.2 C.Y.					
TOTAL 36.1 C.Y.						TOTAL 36.1 C.Y.						TOTAL 106.3 C.Y.					
DRILLED PIERS						DRILLED PIERS						DRILLED PIERS					
DRILLED PIER CONCRETE						DRILLED PIER CONCRETE						DRILLED PIER CONCRETE					
POUR 1 (DRILLED PIERS): 24.5 C.Y.						POUR 1 (DRILLED PIERS): 24.5 C.Y.						POUR 1 (DRILLED PIERS): 73.6 C.Y.					
PERMANENT STEEL CASING FOR 4'-0" Ø DRILLED PIER 26.7 LIN. FT.						PERMANENT STEEL CASING FOR 4'-0" Ø DRILLED PIER 26.7 LIN. FT.						PERMANENT STEEL CASING FOR 4'-0" Ø DRILLED PIER 67.1 LIN. FT.					
CSL TUBES 223 FT.						CSL TUBES 223 FT.						CSL TUBES 668 FT.					
4'-0" Ø DRILLED PIERS 52.7 LIN. FT.						4'-0" Ø DRILLED PIERS 52.6 LIN. FT.						4'-0" Ø DRILLED PIERS 158.1 LIN. FT.					

SUMMARY BILL OF MATERIAL

REINFORCING STEEL _____ 63,678 LBS.
 SPIRAL COLUMN REINFORCING STEEL _____ 11,298 LBS.
 CLASS A CONCRETE _____ 178.5 C.Y.
 4'-0" Ø DRILLED PIERS _____ 263.4 LIN. FT.
 PERMANENT STEEL CASING _____ 120.5 FT.

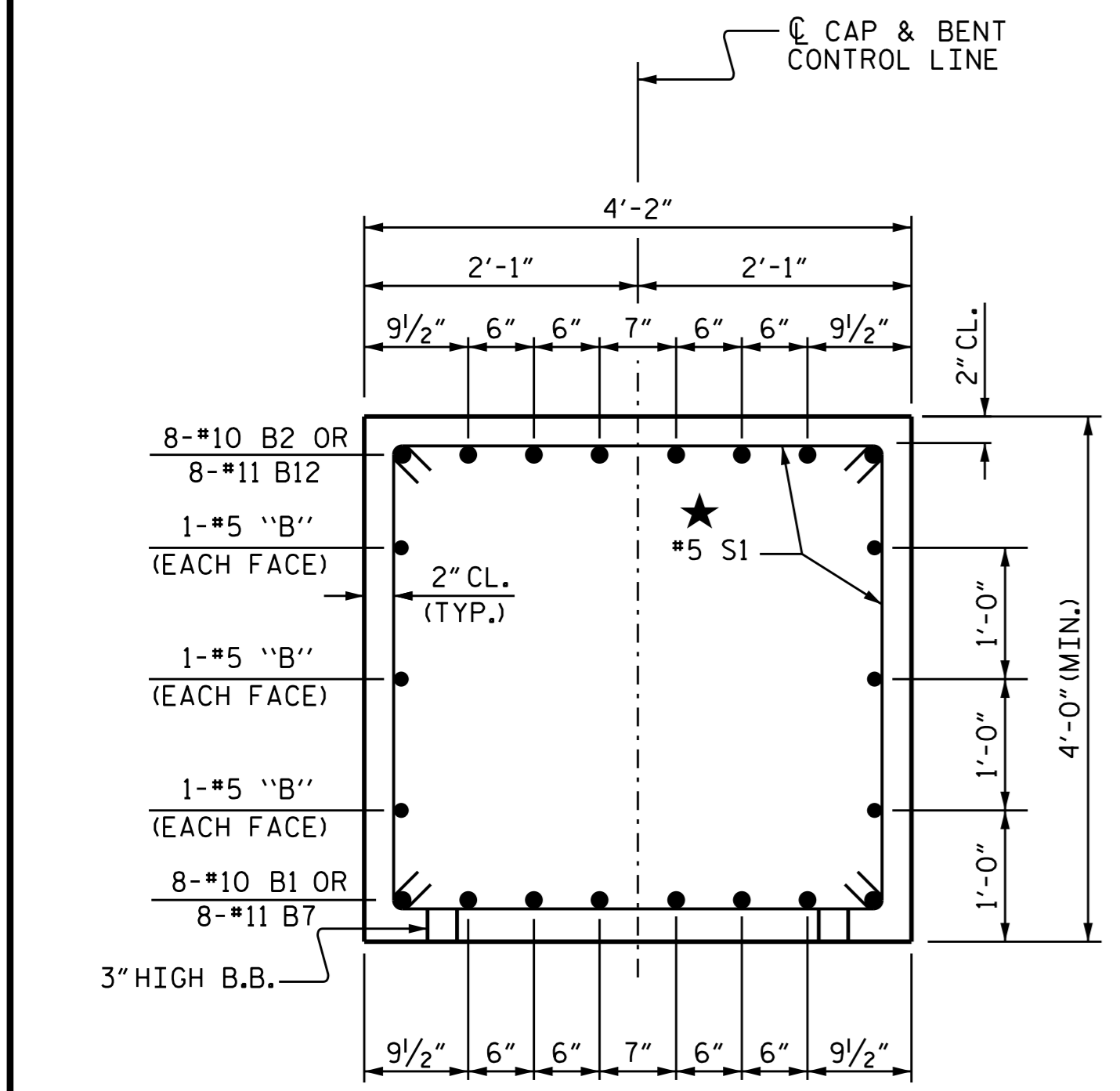
PROJECT NO. I-3318BB
 JOHNSTON COUNTY
 STATION: 24+68.00 -L-

SHEET 5 OF 5

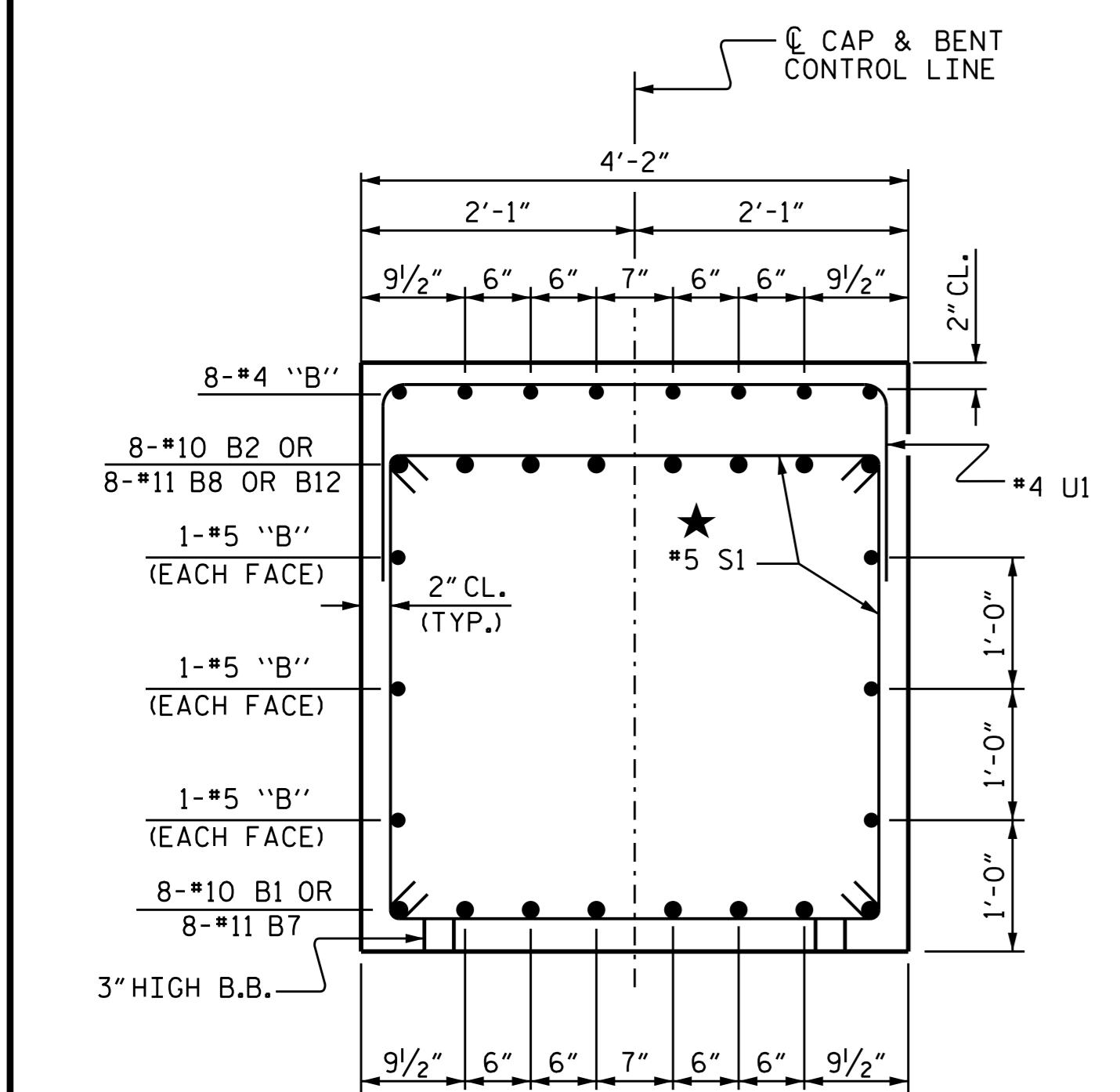
STATE OF NORTH CAROLINA
 DEPARTMENT OF TRANSPORTATION
 RALEIGH

BENT #2
STAGE I & II

REVISIONS						SHEET NO.	
NO.	BY:	DATE:	NO.	BY:	DATE:	S-60	
1			3			TOTAL SHEETS 78	
2			4				



SECTION A-A
STAGE I & II



SECTION B-B
STAGE I & II

★ INVERT ALTERNATE STIRRUPS

DRAWN BY: B. N. BARODAWALA DATE: 4-22-15
 CHECKED BY: D. G. ELY DATE: 6-3-15
 DESIGN ENGINEER OF RECORD: M. AHMED DATE: 8-6-15