

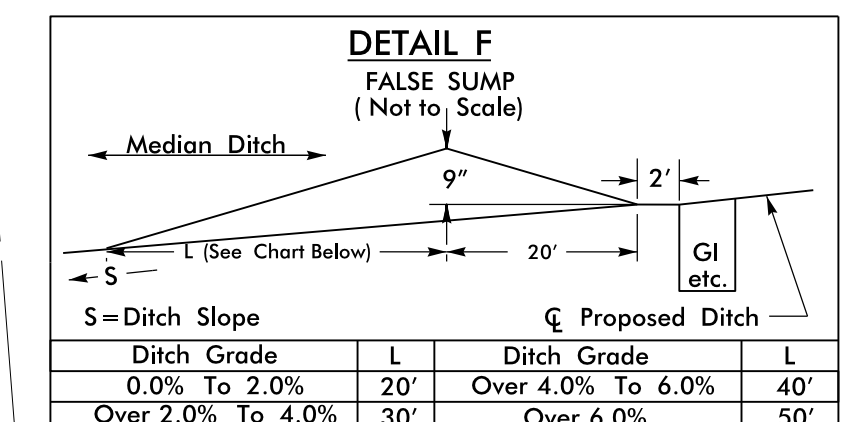
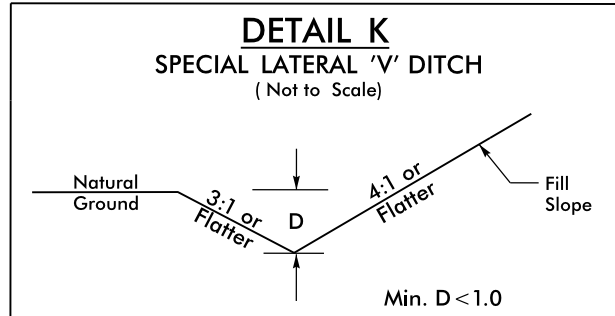
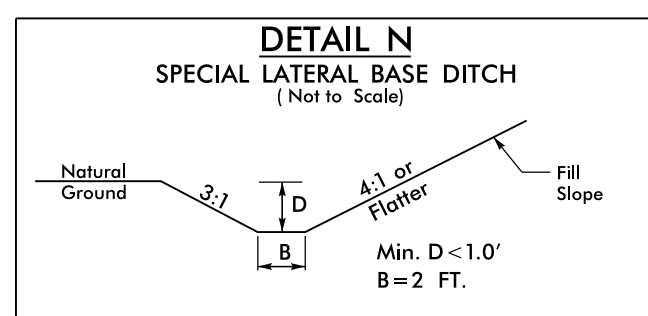
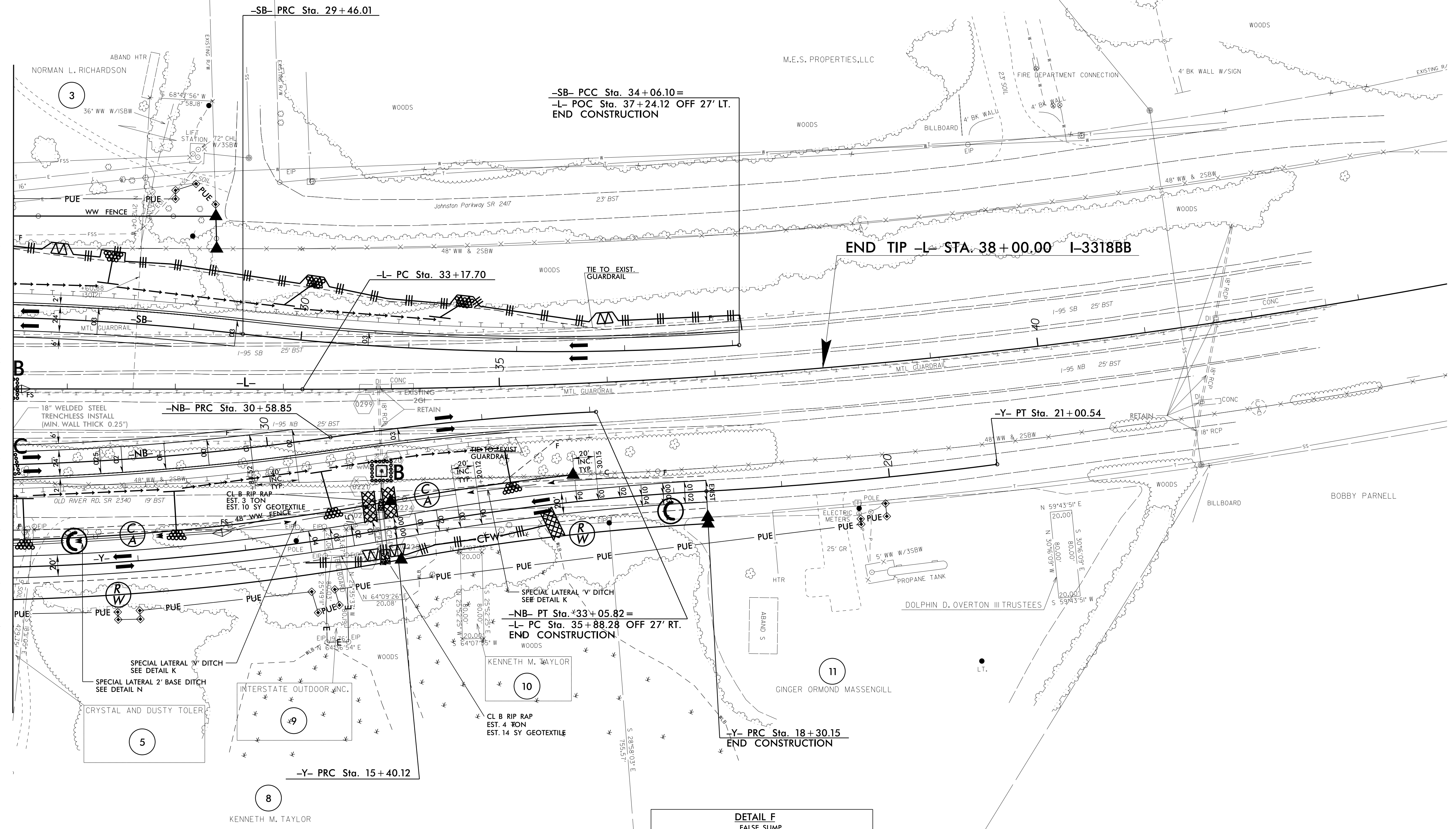
PROJECT REFERENCE NO. 1-3318BB	SHEET NO. EC-9/CONST.2B-3
RW SHEET NO.	
ROADWAY DESIGN ENGINEER	HYDRAULICS ENGINEER

DETAIL OF ON-SITE DETOURS

FINAL DRAINAGE TO BE INSTALLED AT ONSET OF PROJECT DURING CONSTRUCTION OF -Y- AND ONSITE DETOURS. ALL DRAINAGE STRUCTURES ARE TO BE RETAINED IN FINAL CONDITION UNLESS OTHERWISE NOTED.

# DETOUR

MATCHLINE -L- STA. 30 + 50.00 SEE SHEET 2B-2



8/17/99  
28 JUL 2015 10:14  
R:\E\commen\p\1-3318BB-EC.tup\_2B-3.dgn  
R:\E\commen\p\1-3318BB-EC.tup\_2B-3.dgn  
R:\E\commen\p\1-3318BB-EC.tup\_2B-3.dgn