

DETAIL OF ON-SITE DETOURS

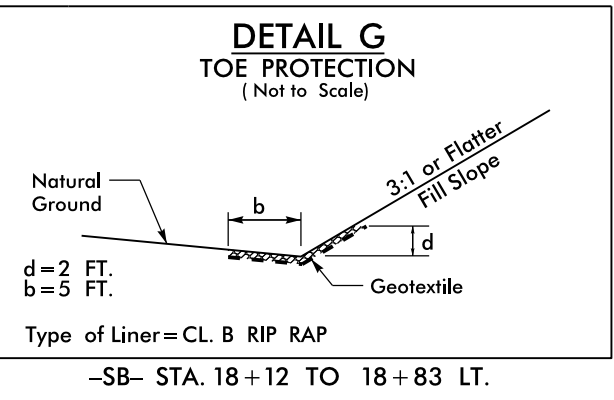
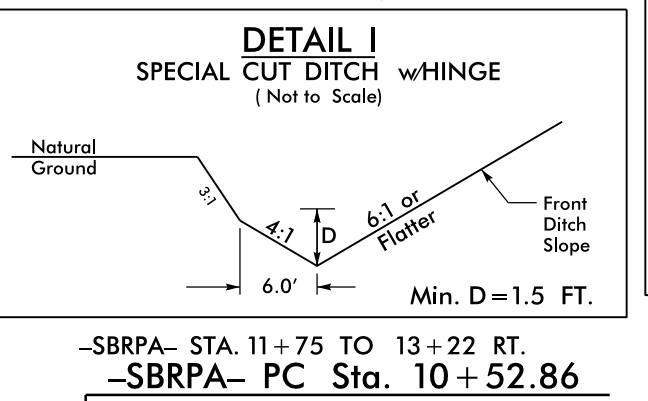
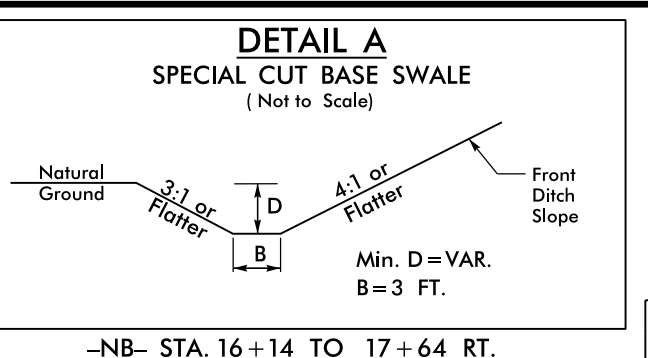
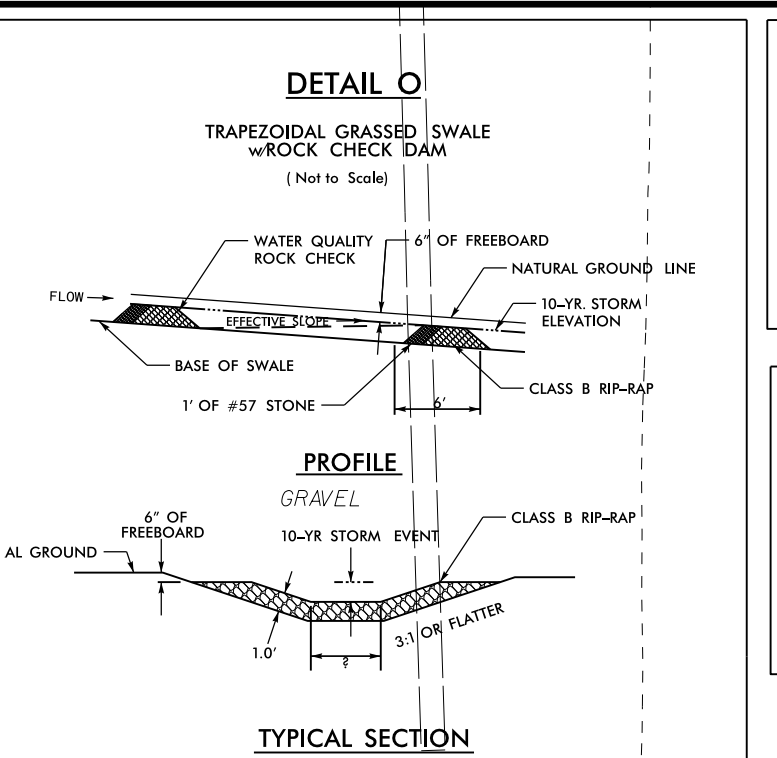
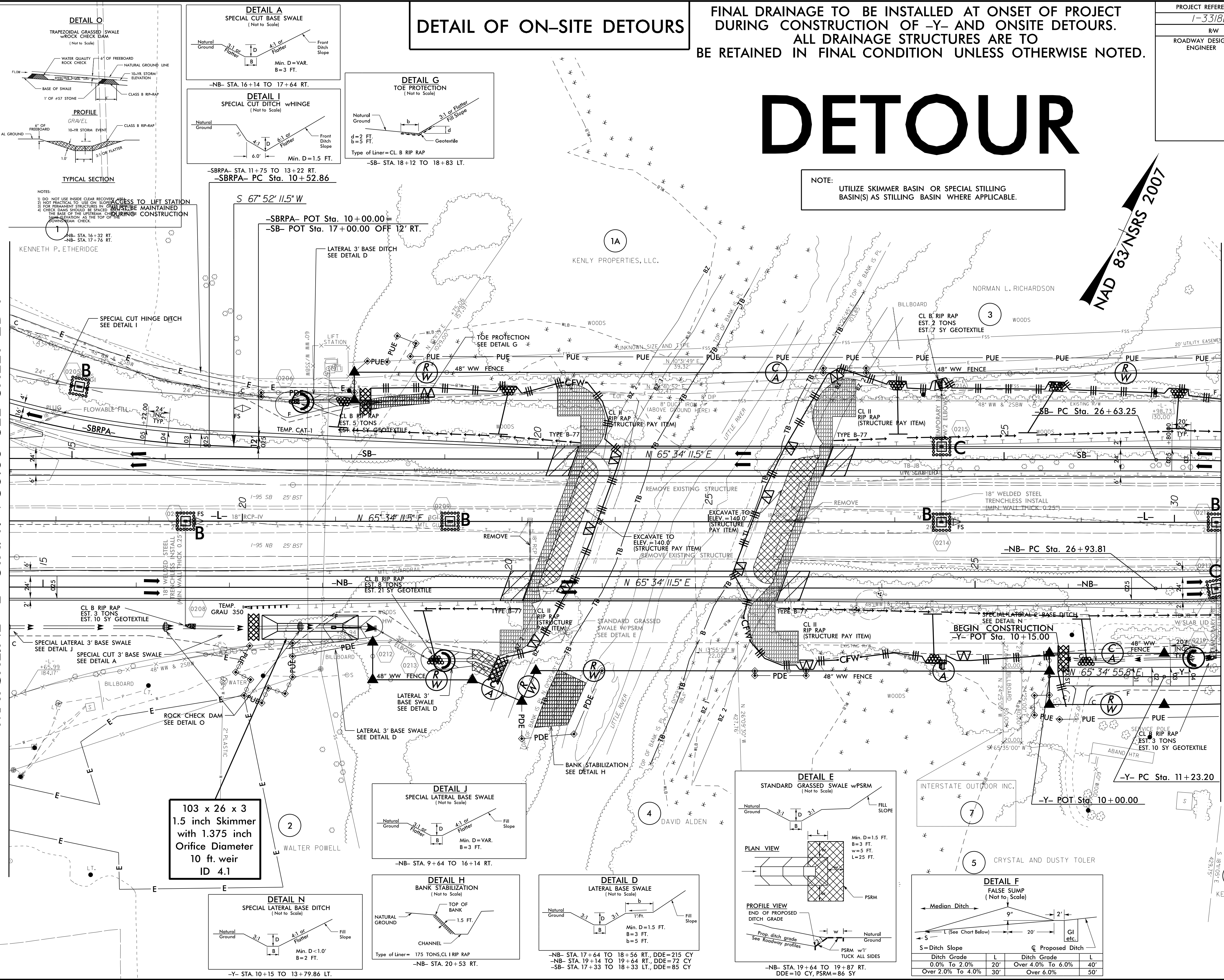
FINAL DRAINAGE TO BE INSTALLED AT ONSET OF PROJECT DURING CONSTRUCTION OF -Y- AND ONSITE DETOURS. ALL DRAINAGE STRUCTURES ARE TO BE RETAINED IN FINAL CONDITION UNLESS OTHERWISE NOTED.

DETOUR

NOTE: UTILIZE SKIMMER BASIN OR SPECIAL STILLING BASIN(S) AS STILLING BASIN WHERE APPLICABLE.

MATCHLINE -L- STA. 17 + 50.00 SEE SHEET 2B-1

MATCHLINE -L- STA. 30 + 50.00 SEE SHEET 2B-3



NOTES:
 1) DO NOT USE INSIDE CLEAR RECOVERY AREA
 2) NOT PRACTICAL TO USE ON SLOPES
 3) FOR PERMANENT STRUCTURES IN CLEAR RECOVERY AREA
 4) CHECK DAMS SHOULD BE SPACED TO MAINTAIN THE BASE OF THE UPSTREAM CHECK DAMS AT THE SAME ELEVATION AS THE TOP OF THE DOWNSTREAM CHECK DAMS

ACCESS TO LIFT STATION
 -NB- STA. 16+32 RT.
 -NB- STA. 17+76 RT.

-SBRPA- STA. 11+75 TO 13+22 RT.
 -SBRPA- PC Sta. 10+52.86
 -SBRPA- POT Sta. 10+00.00
 -SB- POT Sta. 17+00.00 OFF 12' RT.

-SB- STA. 18+12 TO 18+83 LT.

-NB- STA. 16+32 RT.
 -NB- STA. 17+76 RT.

S 67° 52' 11.5" W

N 65° 34' 11.5" E

SPECIAL CUT HINGE DITCH
 SEE DETAIL I

LATERAL 3' BASE DITCH
 SEE DETAIL D

TOE PROTECTION
 SEE DETAIL G

FLOWABLE-FILL
 24" INCH TYP.

CL B RIP RAP
 EST. 5 TONS
 EST. 44 SY GEOTEXTILE

CL II RIP RAP
 (STRUCTURE PAY ITEM)

SPECIAL LATERAL 3' BASE SWALE
 SEE DETAIL J

CL B RIP RAP
 EST. 8 TONS
 EST. 21 SY GEOTEXTILE

CL II RIP RAP
 (STRUCTURE PAY ITEM)

ROCK CHECK DAM
 SEE DETAIL O

LATERAL 3' BASE SWALE
 SEE DETAIL D

BANK STABILIZATION
 SEE DETAIL H

TEMP. GRAU 350

STANDARD GRASSED SWALE w/PSRM
 SEE DETAIL E

CL II RIP RAP
 (STRUCTURE PAY ITEM)

SPECIAL CUT 3' BASE SWALE
 SEE DETAIL A

LATERAL 3' BASE SWALE
 SEE DETAIL D

CL II RIP RAP
 (STRUCTURE PAY ITEM)

TEMP. CAT-1

EXCAVATE TO ELEV. = 140.0'
 (STRUCTURE PAY ITEM)

CL II RIP RAP
 (STRUCTURE PAY ITEM)

TEMP. GRAU 350

EXCAVATE TO ELEV. = 140.0'
 (STRUCTURE PAY ITEM)

CL II RIP RAP
 (STRUCTURE PAY ITEM)

SPECIAL LATERAL 3' BASE SWALE
 SEE DETAIL J

LATERAL 3' BASE SWALE
 SEE DETAIL D

CL II RIP RAP
 (STRUCTURE PAY ITEM)

TEMP. GRAU 350

EXCAVATE TO ELEV. = 140.0'
 (STRUCTURE PAY ITEM)

CL II RIP RAP
 (STRUCTURE PAY ITEM)

SPECIAL CUT 3' BASE SWALE
 SEE DETAIL A

LATERAL 3' BASE SWALE
 SEE DETAIL D

CL II RIP RAP
 (STRUCTURE PAY ITEM)

TEMP. GRAU 350

EXCAVATE TO ELEV. = 140.0'
 (STRUCTURE PAY ITEM)

CL II RIP RAP
 (STRUCTURE PAY ITEM)

SPECIAL LATERAL 3' BASE SWALE
 SEE DETAIL J

LATERAL 3' BASE SWALE
 SEE DETAIL D

CL II RIP RAP
 (STRUCTURE PAY ITEM)

TEMP. GRAU 350

EXCAVATE TO ELEV. = 140.0'
 (STRUCTURE PAY ITEM)

CL II RIP RAP
 (STRUCTURE PAY ITEM)

SPECIAL CUT 3' BASE SWALE
 SEE DETAIL A

LATERAL 3' BASE SWALE
 SEE DETAIL D

CL II RIP RAP
 (STRUCTURE PAY ITEM)

TEMP. GRAU 350

EXCAVATE TO ELEV. = 140.0'
 (STRUCTURE PAY ITEM)

CL II RIP RAP
 (STRUCTURE PAY ITEM)

SPECIAL LATERAL 3' BASE SWALE
 SEE DETAIL J

LATERAL 3' BASE SWALE
 SEE DETAIL D

CL II RIP RAP
 (STRUCTURE PAY ITEM)

TEMP. GRAU 350

EXCAVATE TO ELEV. = 140.0'
 (STRUCTURE PAY ITEM)

CL II RIP RAP
 (STRUCTURE PAY ITEM)

SPECIAL CUT 3' BASE SWALE
 SEE DETAIL A

LATERAL 3' BASE SWALE
 SEE DETAIL D

CL II RIP RAP
 (STRUCTURE PAY ITEM)

TEMP. GRAU 350

EXCAVATE TO ELEV. = 140.0'
 (STRUCTURE PAY ITEM)

CL II RIP RAP
 (STRUCTURE PAY ITEM)

SPECIAL LATERAL 3' BASE SWALE
 SEE DETAIL J

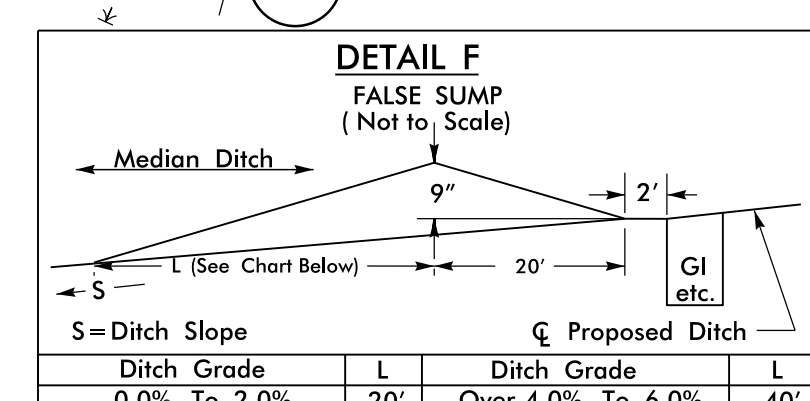
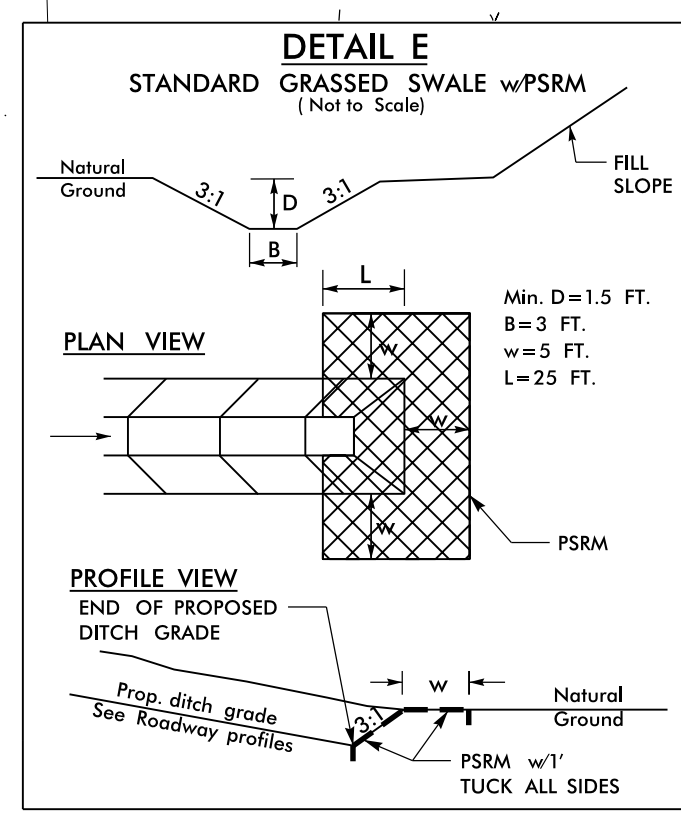
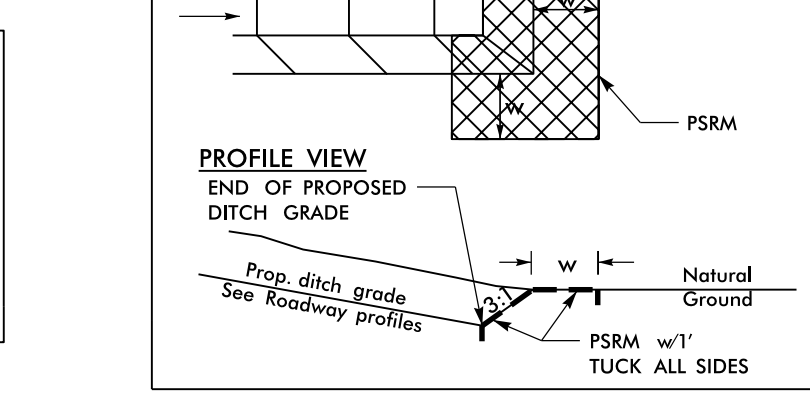
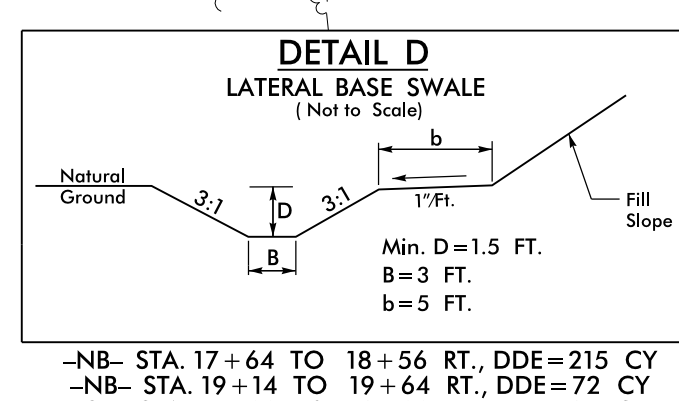
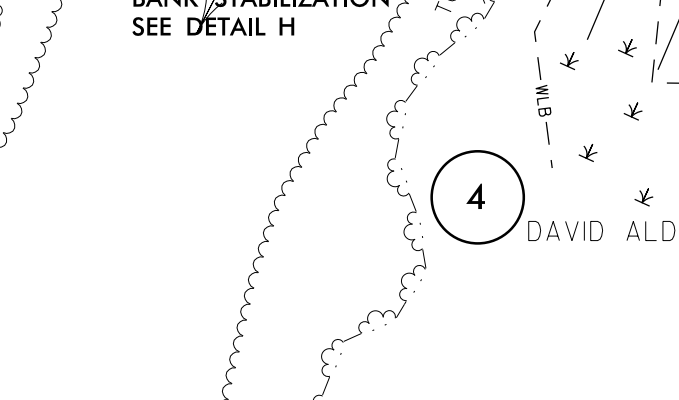
LATERAL 3' BASE SWALE
 SEE DETAIL D

CL II RIP RAP
 (STRUCTURE PAY ITEM)

TEMP. GRAU 350

EXCAVATE TO ELEV. = 140.0'
 (STRUCTURE PAY ITEM)

CL II RIP RAP
 (STRUCTURE PAY ITEM)



103 x 26 x 3
 1.5 inch Skimmer
 with 1.375 inch
 Orifice Diameter
 10 ft. weir
 ID 4.1

8/17/99
 28 JUL 2015 10:12
 R:\Projects\3318BB\EC.tup...2B-2.dgn
 REVISION 1
 416

NAD 83/NSRS 2007

KENNETH M. TAYLOR