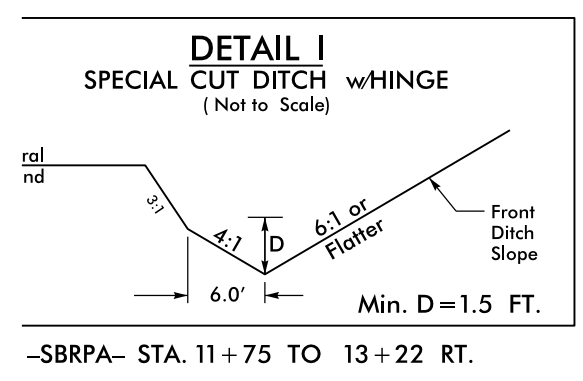
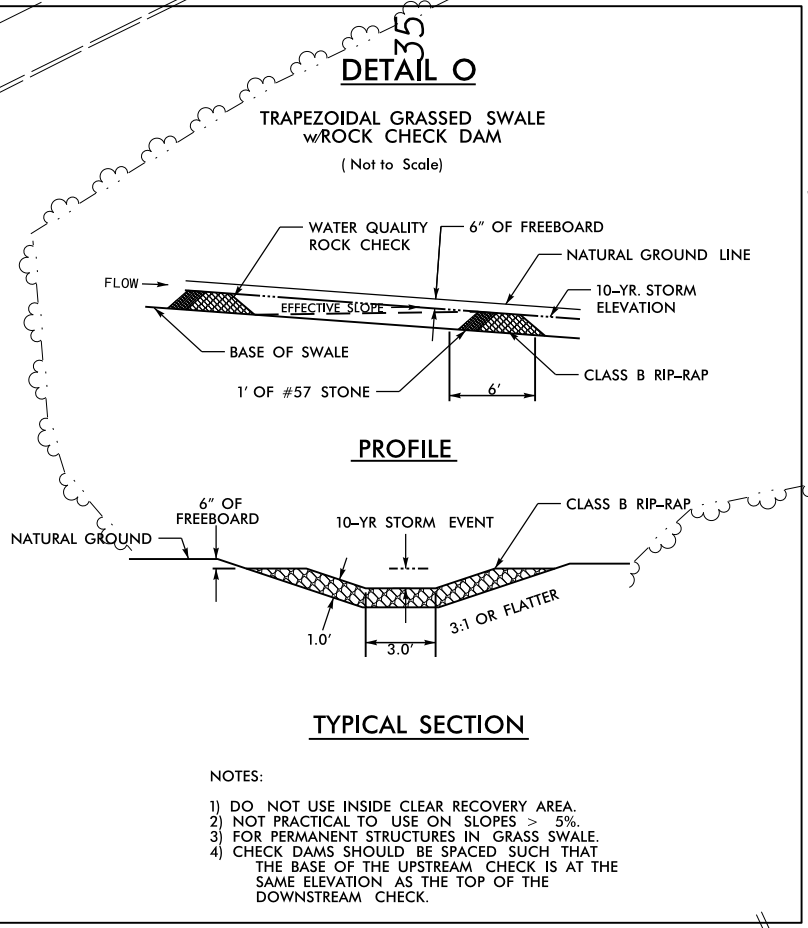
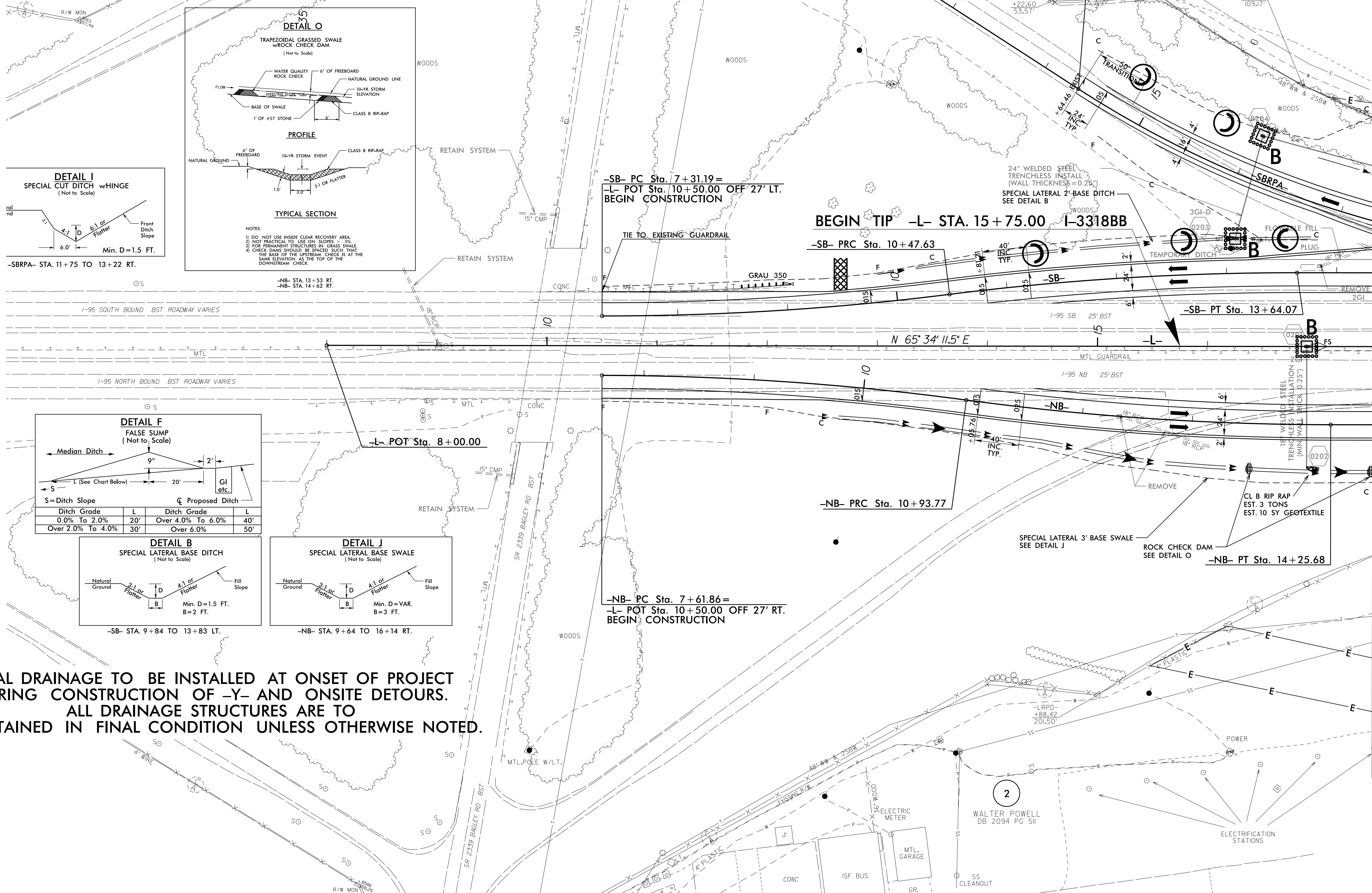
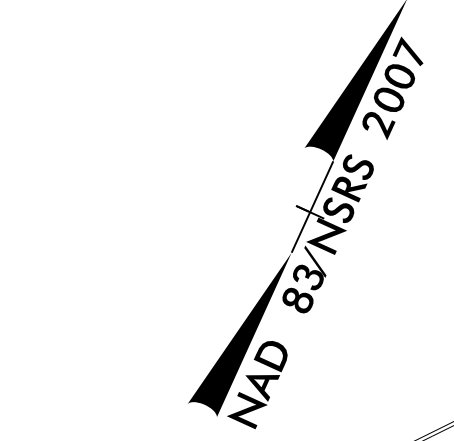


DETOUR

DETAIL OF ON-SITE DETOURS

PROJECT REFERENCE NO. 1-3318BB	SHEET NO. EC-7/CONST.2B-1
RW SHEET NO.	
ROADWAY DESIGN ENGINEER	HYDRAULICS ENGINEER



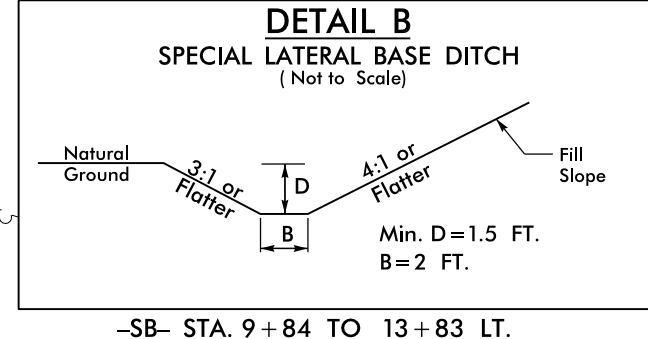
-SBRPA- STA. 11+75 TO 13+22 RT.

DETAIL F: FALSE SUMP (Not to Scale)

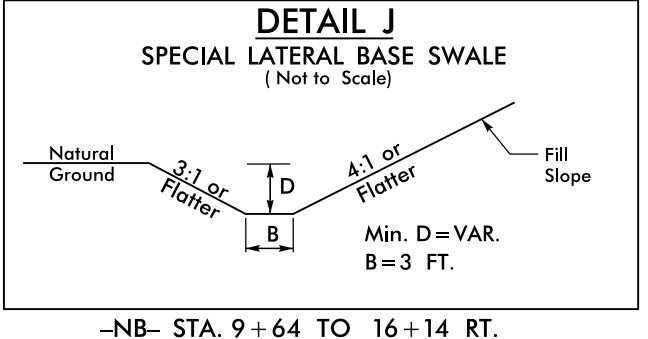
Median Ditch

S = Ditch Slope

Ditch Grade	L	Ditch Grade	L
0.0% To 2.0%	20'	Over 4.0% To 6.0%	40'
Over 2.0% To 4.0%	30'	Over 6.0%	50'



-SB- STA. 9+84 TO 13+83 LT.



-NB- STA. 9+64 TO 16+14 RT.

FINAL DRAINAGE TO BE INSTALLED AT ONSET OF PROJECT DURING CONSTRUCTION OF -Y- AND ONSITE DETOURS. ALL DRAINAGE STRUCTURES ARE TO BE RETAINED IN FINAL CONDITION UNLESS OTHERWISE NOTED.

MATCHLINE -L- STA. 17+50.00 SEE SHEET 2B-2

8/17/99

28 JUL 2015 10:09
 R:\Projects\1-3318BB-EC.tup_2B-1.dgn
 R:\Projects\1-3318BB-EC.tup_2B-1.dgn
 R:\Projects\1-3318BB-EC.tup_2B-1.dgn