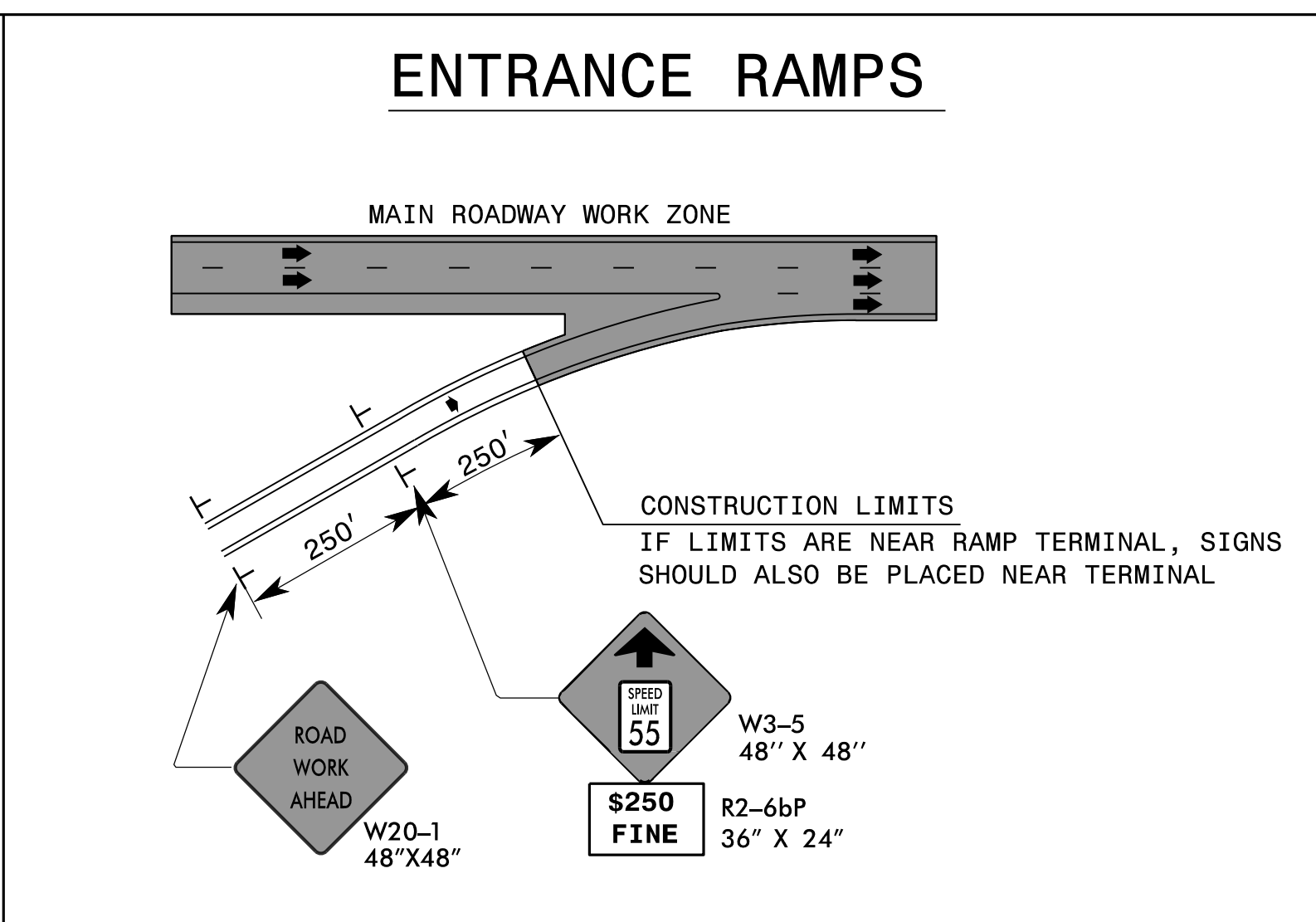
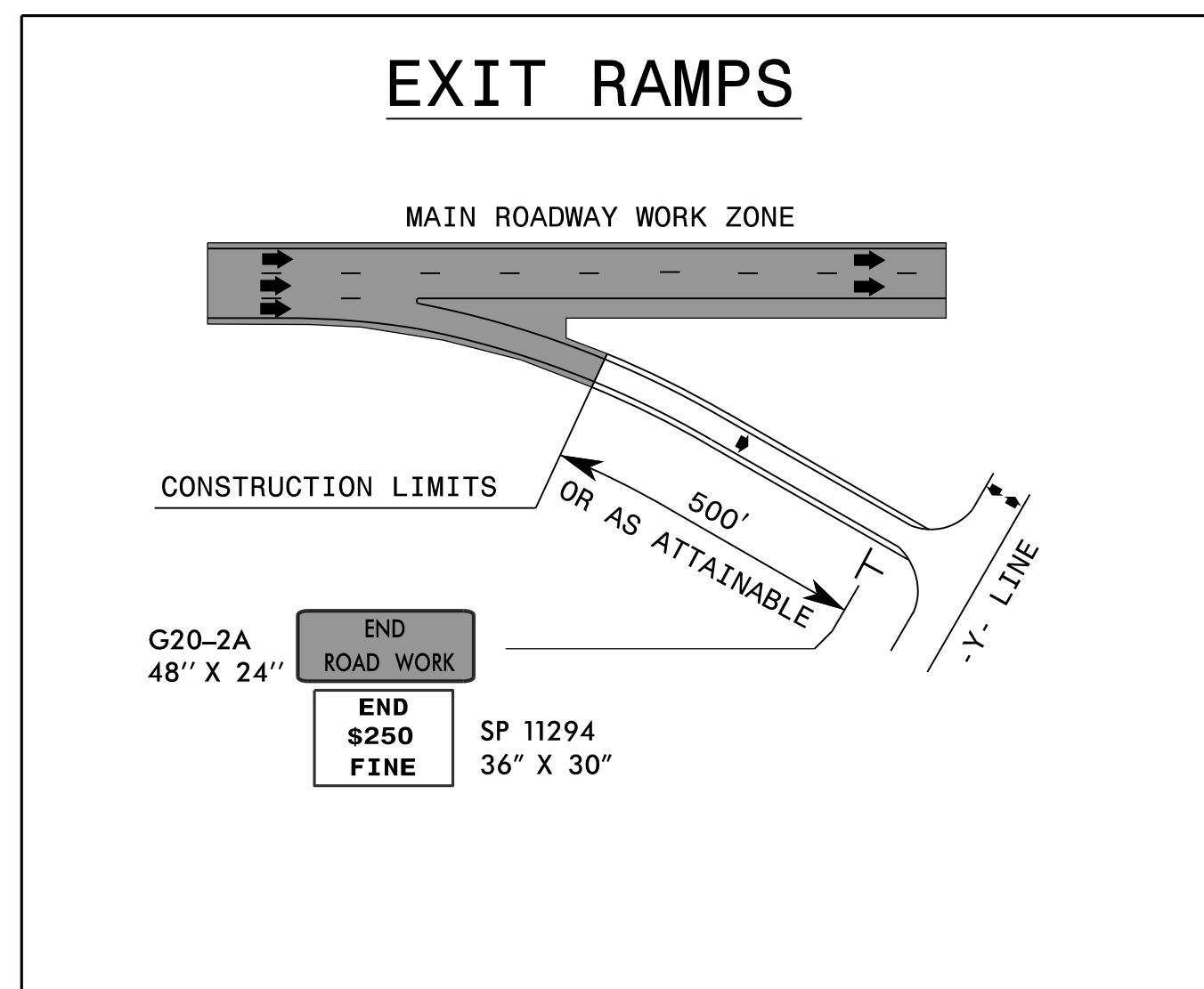


NOTES

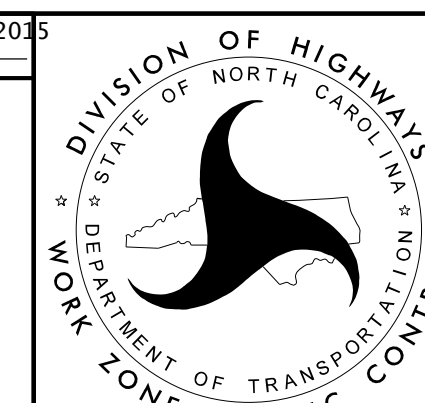
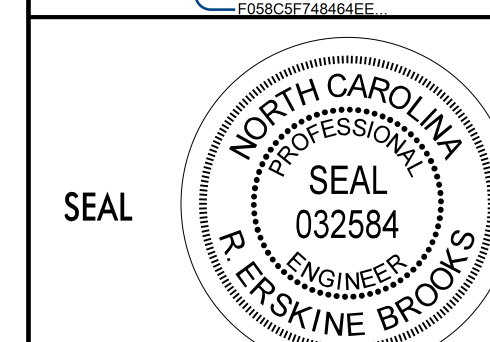
- 1) THE WORK ZONE SPEED LIMIT SIGNS ARE TO BE MOUNTED FROM 7' ABOVE EDGE OF PAVEMENT ELEVATION.
- 2) PROVIDE ADDITIONAL POSTED "WORK ZONE" SPEED LIMIT AND "\$250 SPEEDING FINE" SIGNS WITHIN THE WORK AREA AS DIRECTED BY THE ENGINEER.
- 3) THE STATE TRAFFIC ENGINEER HAS TO ORDINANCE THE SPEED LIMIT REDUCTION IN ORDER FOR THE REDUCTION TO BE VALID AND ENFORCEABLE. NO "WORK ZONE" SPEED LIMIT SIGNS SHALL BE INSTALLED PRIOR TO RECEIVING A SIGNED ORDINANCE. IN ADDITION, THE \$250 SPEEDING FINE ALSO REQUIRES A SEPARATE SIGNED ORDINANCE BY THE STATE TRAFFIC ENGINEER. NO "\$250 SPEEDING FINE" SIGNS SHALL BE INSTALLED PRIOR TO RECEIVING A SIGNED ORDINANCE. INSTALL AND REMOVE SIGNS AS DESCRIBED IN THE PROJECT PHASING.
- 4) TWO SIGNS SHALL BE PLACED AT EACH LOCATION. ONE SIGN WITHIN THE MEDIAN AND ONE SIGN ON THE OUTSIDE SHOULDER.
- 5) MODIFY, COVER, OR REMOVE SIGNING UPON REMOVAL OF LANE CLOSURES OR SHIFTING TO SUBSEQUENT PHASES.
- 6) ADJUST SIGN LOCATIONS AS DIRECTED BY THE ENGINEER.

THESE SIGNS AND DEVICES, WITH ASSOCIATED DIMENSIONS, ARE SHOWN TO CLARIFY THE RELATIONSHIP BETWEEN SIGNS AND DEVICES ON THE ROADWAY STANDARD DRAWINGS AND SIGNS ON THE SPEED LIMIT REDUCTION DETAIL, WITH MODIFIED DISTANCES TO ACCOMMODATE SPECIFIC SITE CONDITIONS.

- A DENOTES SIGNS AND DEVICES TO BE INSTALLED PER MODIFICATION TO RSD 1101.02, SHEETS 3 AND 4 OF 15.
- B SIGNS TO BE INSTALLED WITH USE OF RSD 1101.02, SHEET 5 OF 15.
- C SIGNS AND DEVICES TO BE INSTALLED IN PHASE II.
- D SIGNS AND DEVICES TO BE INSTALLED IN PHASE III, STEPS 1-4.



APPROVED: *[Signature]* DATE: 9/22/2015



I-95 NB
 "WORK ZONE"
 SPEED LIMIT REDUCTION