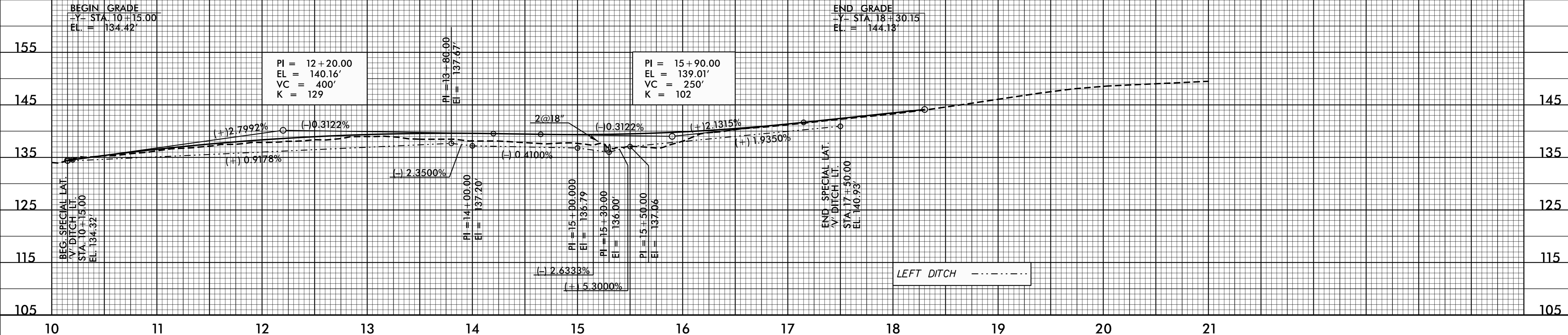


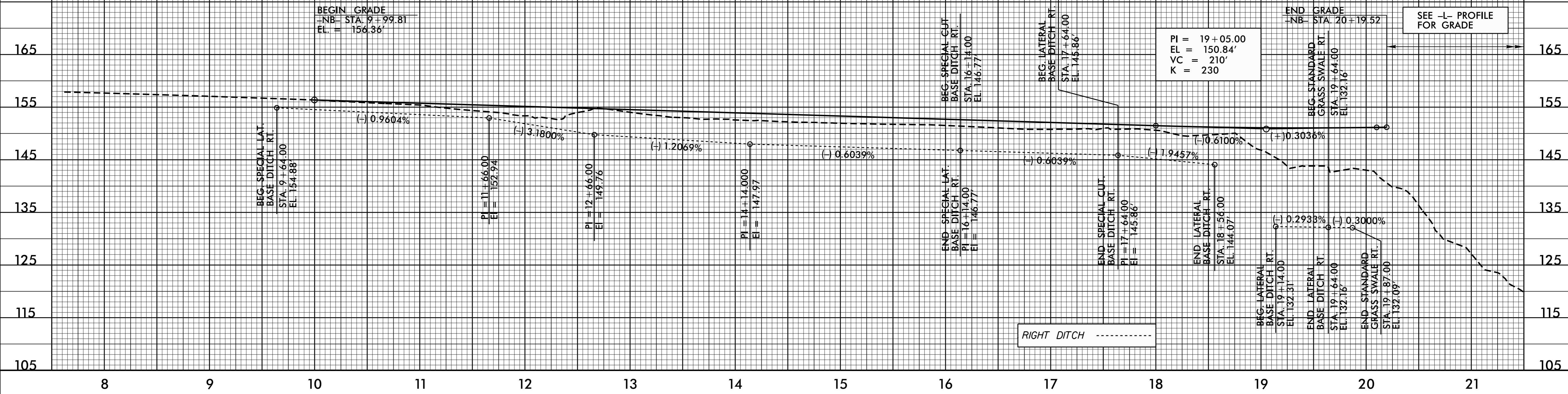
**2@18" RCP-IV HYDRAULIC DATA**

DRAINAGE AREA	= 27	AC
DESIGN DISCHARGE	= 13	CFS
DESIGN FREQUENCY	= 25	YRS
DESIGN HW ELEVATION	= 137.5	FT
BASE DISCHARGE	= 15	CFS
BASE FREQUENCY	= 100	YRS
BASE HW ELEVATION	= 137.5	FT
OVERTOPPING DISCHARGE	= 17+	CFS
OVERTOPPING FREQUENCY	= 500+	YRS
OVERTOPPING ELEVATION	= 138.7	FT

**-Y-**



**-NB-**



5/28/99

10-AUG-2015 16:18 \\13318BB-Rdy.plt.dgn