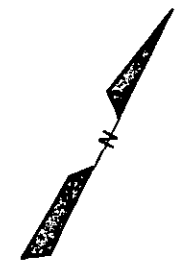


NOTE: FOR COMPRESSION JT. SEAL
SEE 'COMPRESSION JT. SEAL DETAILS'

PLAN OF DECKS



Notes:

Quantities shown for Class II and Class III Surface Preparation are estimated. The Quantities to be paid for will be the actual number of square yards of Class II or Class III Surface Preparation computed by the Engineer from measurements of the areas that are prepared for the overlay.

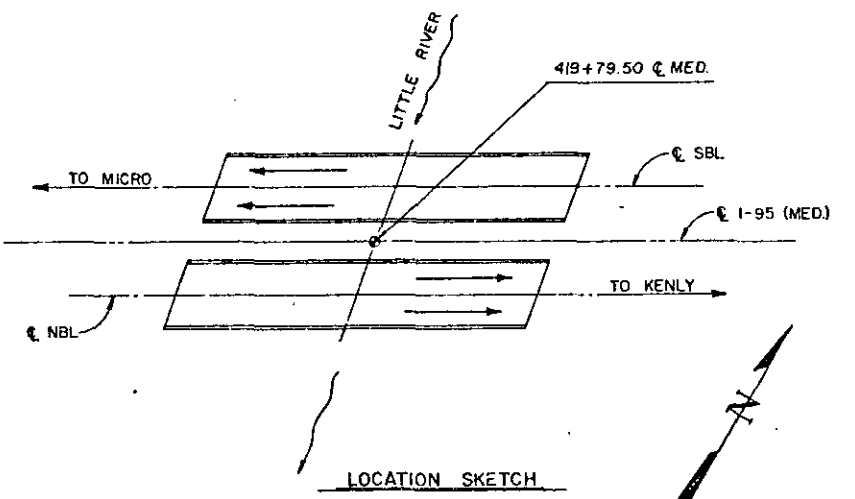
See Special Provisions for Class I, II, and III Surface Preparation.

At the Contractor's Option, either low slump concrete or latex modified concrete may be used for the overlay. See Special Provisions.

See Special Provisions for Low Slump Concrete.

See Special Provisions for Latex Modified Concrete.

For Construction Procedure, See Special Provisions.



LOCATION SKETCH

	TOTAL BILL OF MATERIAL					
	CLASS I SURFACE PREPARATION	CLASS II SURFACE PREPARATION	CLASS III SURFACE PREPARATION	* ALTERNATE ITEMS		PERFORMED COMPRESSION JOINT SEAL
				LOW SLUMP CONCRETE OVERLAY	LATEX MODIFIED CONCRETE	
SQ. YDS.	SQ. YDS.	SQ. YDS.	SQ. YDS.	SQ. YDS.	LUMP SUM	
DECK REPAIR (NBL)	869	142	28	869	869	
DECK REPAIR (SBL)	871	143	30	871	871	
TOTAL	1,740	285	58	1,740	1,740	LUMP SUM

#114 + #116

PROJECT No. 8.1310101
JOHNSTON COUNTY
STATION: 419+76.50 C. MED.

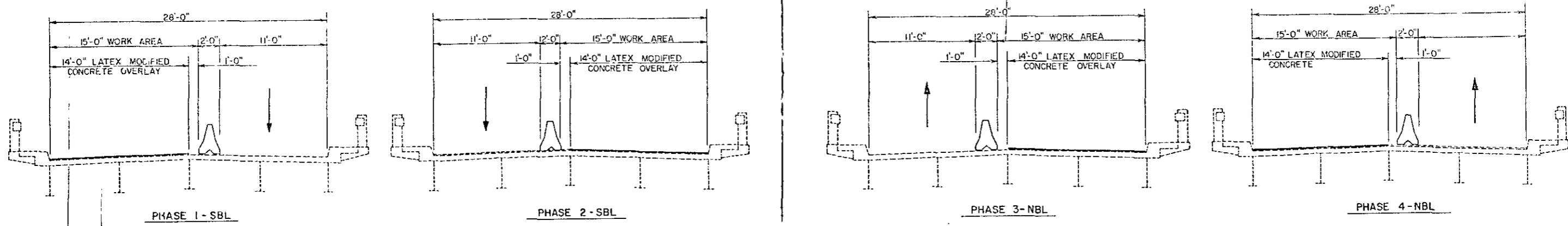
STATE OF NORTH CAROLINE
DEPARTMENT OF TRANSPORTATION
RALEIGH
GENERAL DRAWING
DECK REPAIR OF
BRIDGE NO. 95-31-140 N & S
ON I-95 OVER LITTLE RIVER

AUG. 1983

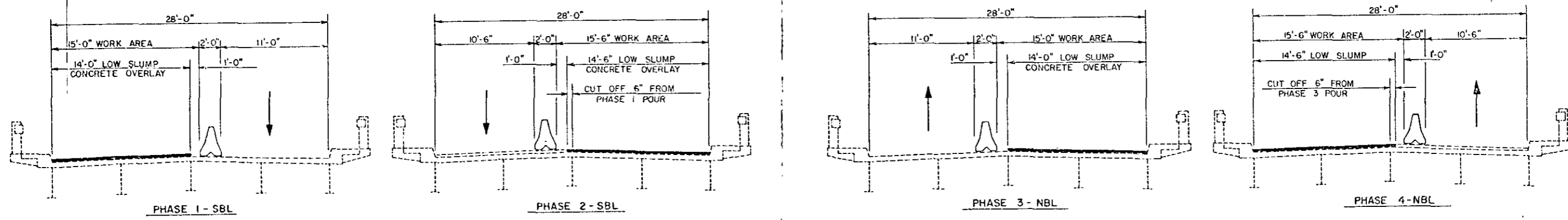
REVISIONS						SHEET NO. 5
NO.	BY	DATE	NO.	BY	DATE	
1			3			TOTAL 5 SHEETS
2			4			

DRAWN BY: J.D. FREI DATE: 7-83
CHECKED BY: H.V. LILES, JR. DATE: 7-83

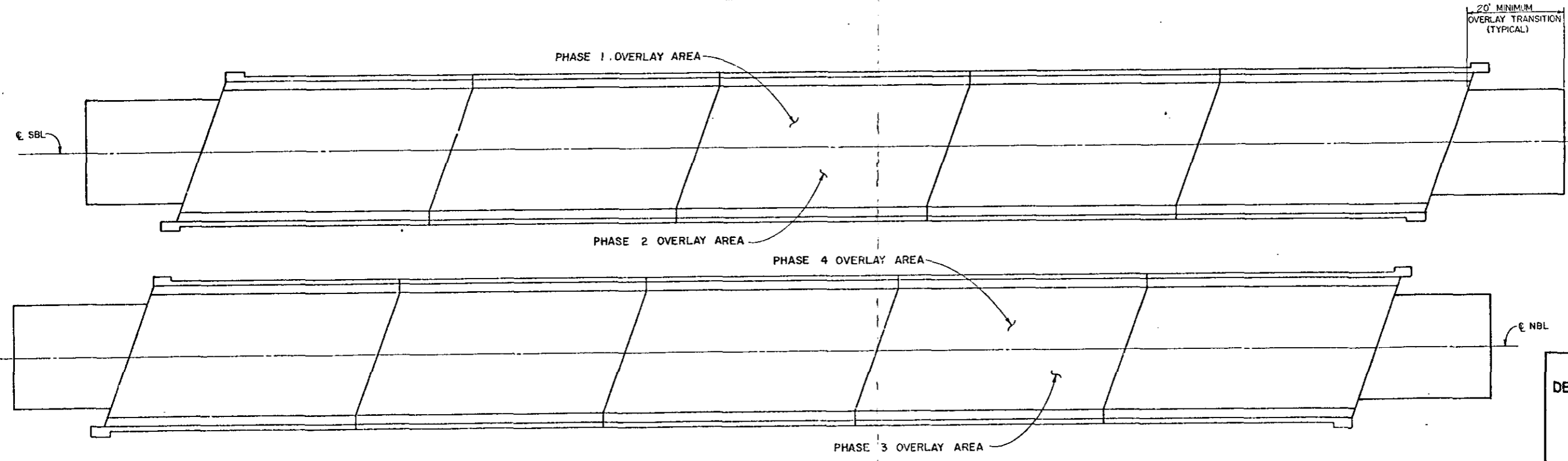
No Utility Conflicts



TYPICAL SECTIONS FOR LATEX MODIFIED CONCRETE



TYPICAL SECTIONS FOR LOW SLUMP CONCRETE



PROJECT No. 8.1310101
 JOHNSTON COUNTY
 STATION: 419+76.50 @ MED.

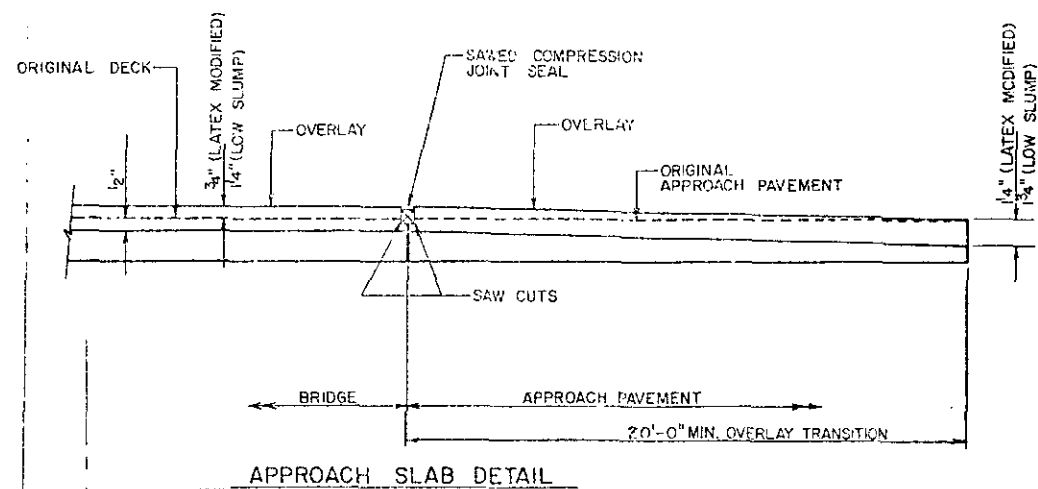
STATE OF NORTH CAROLINA
 DEPARTMENT OF TRANSPORTATION
 RALEIGH
 PHASE PROCEDURE
 DECK REPAIR OF
 BRIDGE NO. 95-31-140 N & S

REV. NO.		BY		DATE	
1		3			
2		4			

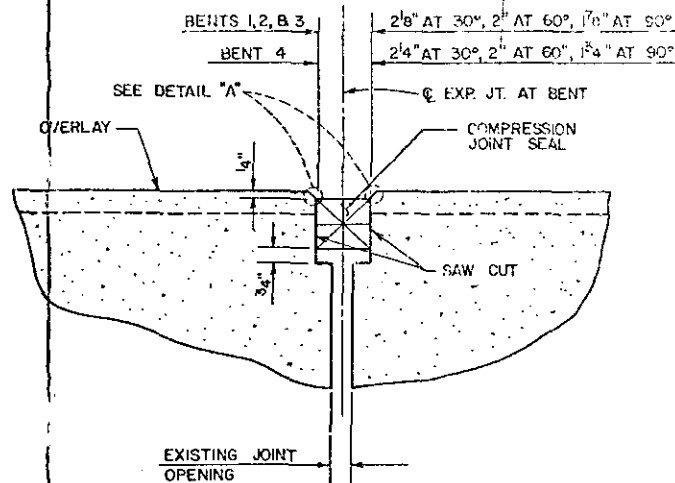
AUG. 1983

DRAWN BY: J.D. FREL
 CHECKED BY: H.V. LILES, JR.
 DATE: 7-83
 DATE: 7-83

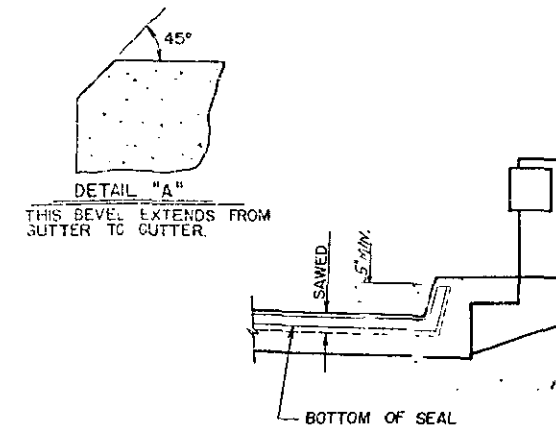
USA ENGINEERS - PLANNERS
 DIAZ SECKINGER & ASSOCIATES, INC.
 100 SOUTH MAIN STREET
 RALEIGH, N.C. 27601



THE SURFACE AREA OF APPROACH SLAB TO BE FILLED IS INCLUDED IN THE CLASS 1 SURFACE PREPARATION FOR EACH RESPECTIVE BRIDGE. THE QUANTITY OF OVERLAY FOR THE APPROACH SLAB IS INCLUDED IN THE TOTAL OVERLAY QUANTITY FOR EACH RESPECTIVE BRIDGE.



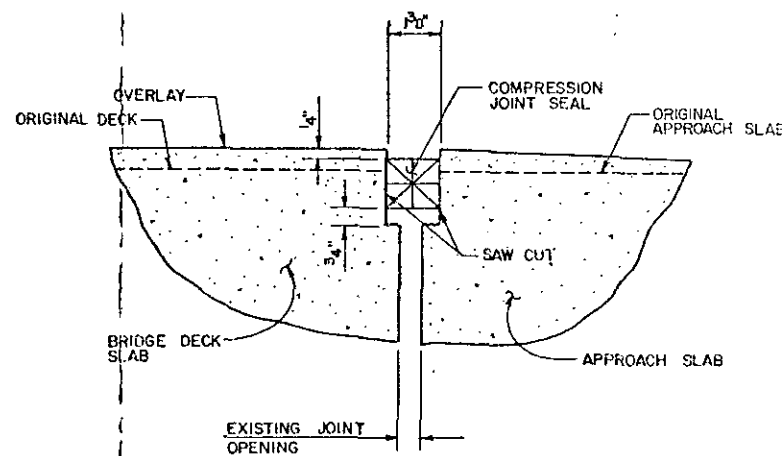
COMPRESSION JOINT SEAL DETAIL
(IN BRIDGE DECK AT BENTS ONLY)



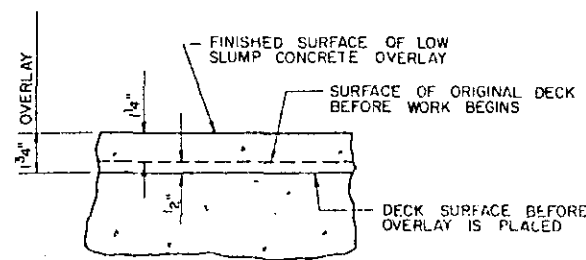
SKETCH SHOWING LIMITS OF COMPRESSION JOINT SEAL

NOTES:

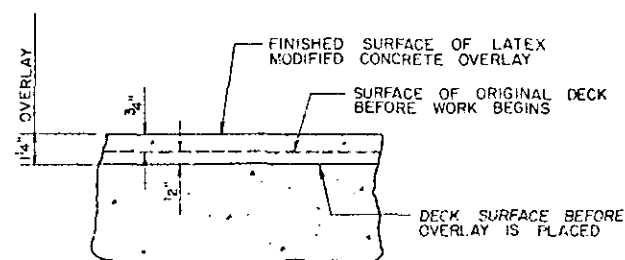
- For preformed compression joint seal, see Special Provisions.
- Preformed compression joint seal shall be paid for at the contract lump sum price. See General drawing.
- Opening shown is based on a nominal uncompressed seal width of 2" at approach slab, and 3" at bents.
- The installed compression seal shall be watertight.
- Provide watertight seal at end of compression seal as recommended by manufacturer.
- Compression seal extends from gutter to gutter along bridge deck notch at approach slab only.



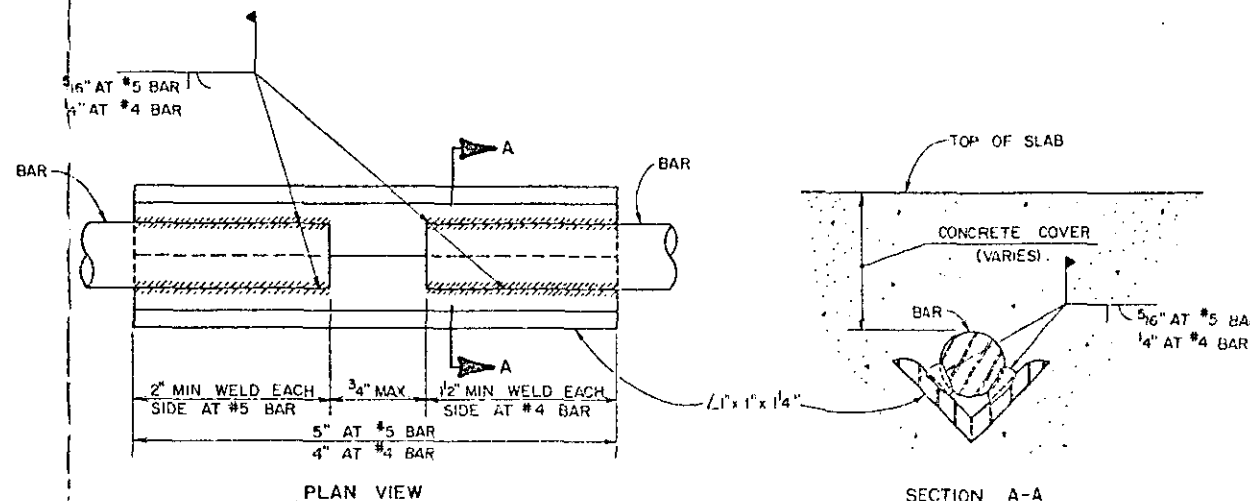
COMPRESSION JOINT SEAL DETAIL
(AT APPROACH SLAB ONLY)



DETAIL FOR LOW SLUMP CONCRETE OVERLAY



DETAIL FOR LATEX MODIFIED CONCRETE OVERLAY



WELD DETAIL FOR SPLICING REINFORCING STEEL

SPLICES OF REINFORCING STEEL SHALL BE WELDED AS DETAILED AND ALL WELDING SHALL CONFORM TO THE LATEST EDITION OF THE AMERICAN WELDING SOCIETY REINFORCING STEEL WELDING CODE (A.W.S. D121) CHEMICAL ANALYSIS OF THE EXISTING REINFORCING STEEL WILL NOT BE REQUIRED

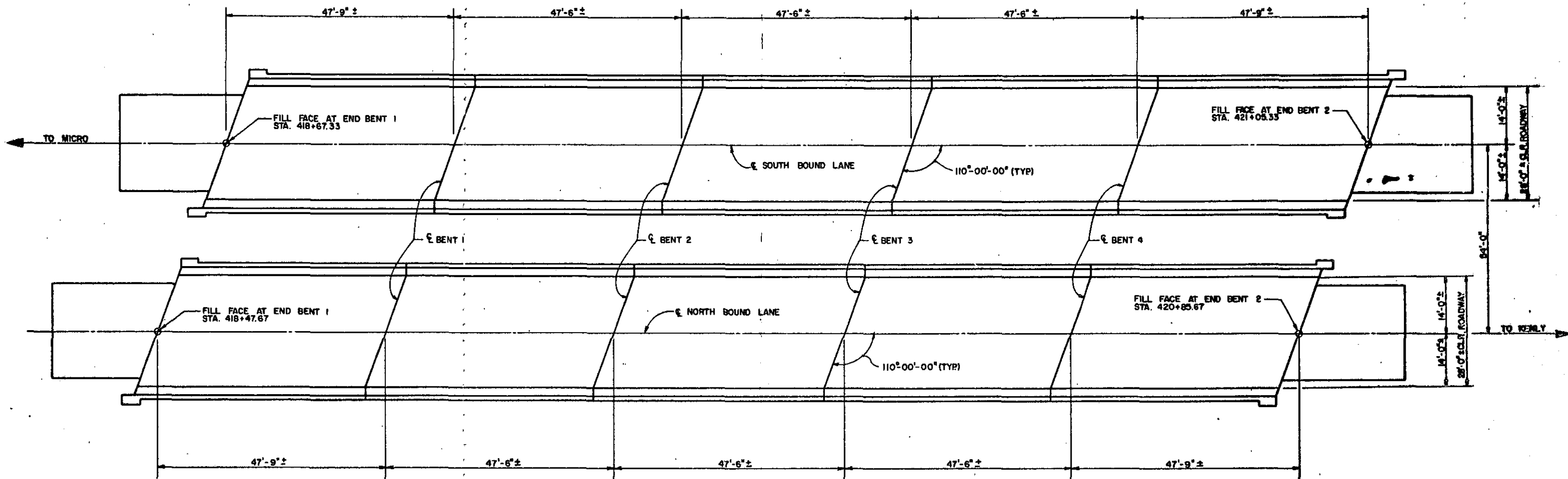
PROJECT No. 8.1310101
JOHNSTON COUNTY
STATION: 419+76.50 @ MED.

STATE OF NORTH CAROLINA
DEPARTMENT OF TRANSPORTATION
RALEIGH
SECTIONS AND DETAILS
DECK REPAIR OF
BRIDGE NO. 95-31-140 N&S

NO.		BY		DATE		NO.		BY		DATE	
1						3					
2						4					

USA ENGINEERS - PLANNERS
DIAL SECKINGER & ASSOCIATES, INC.

DRAWN BY: J. D. FREI DATE: 7-83
CHECKED BY: H. V. LILES, JR. DATE: 7-83



NOTE: FOR COMPRESSION JT. SEAL
SEE 'COMPRESSION JT. SEAL DETAILS'

PLAN OF DECKS

Notes:

Quantities shown for Class II and Class III Surface Preparation are Estimated. The Quantities to be paid for will be the actual number of square yards of Class II or Class III Surface Preparation Computed by the Engineer from measurements of the areas that are prepared to receive the overlay.

See Special Provisions for Class I, II, and III Surface Preparation.

At the Contractor's Option, either low slump concrete or latex modified concrete may be used for the overlay. See Special Provisions.

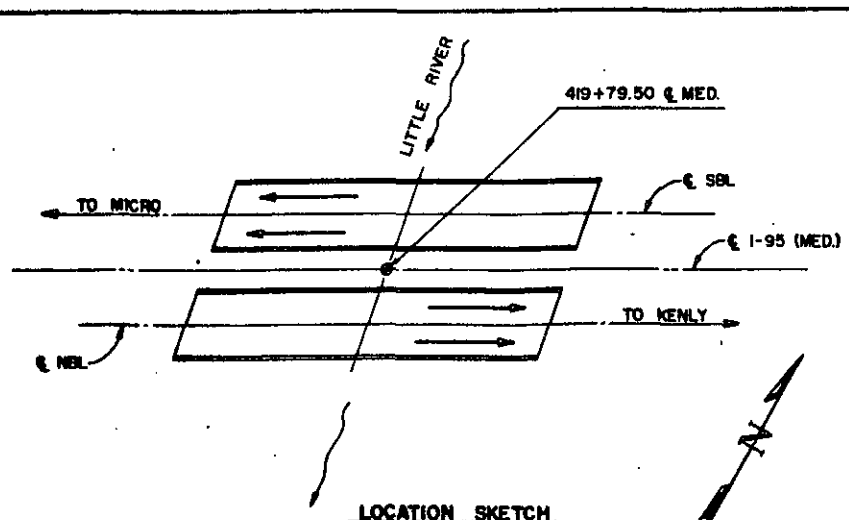
See Special Provisions for Low Slump Concrete.

See Special Provisions for Latex Modified Concrete.

For Construction Procedure, See Special Provisions.



PROJECT No. B.1310101
JOHNSTON COUNTY
STATION: 419+76.50 & MED.



LOCATION SKETCH

No Utility Conflicts

	TOTAL BILL OF MATERIAL					
	CLASS I SURFACE PREPARATION	CLASS II SURFACE PREPARATION	CLASS III SURFACE PREPARATION	* ALTERNATE ITEMS LOW SLUMP CONCRETE OVERLAY	LATEX MODIFIED CONCRETE	PREFORMED COMPRESSION JOINT SEAL
	SQ. YDS.	SQ. YDS.	SQ. YDS.	SQ. YDS.	SQ. YDS.	LUMP SUM
DECK REPAIR (NBL)	869	142	28	869	869	
DECK REPAIR (SBL)	871	143	30	871	871	
TOTAL	1,740	285	58	1,740	1,740	LUMP SUM

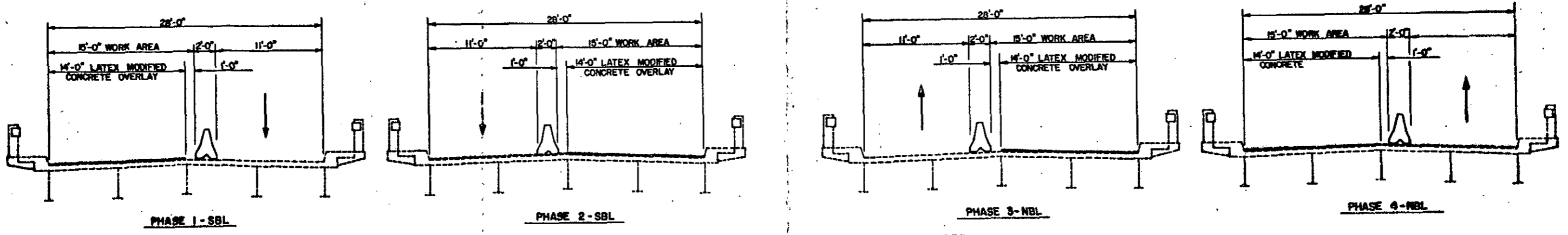
N = #114
S = #116

STATE OF NORTH CAROLINA
DEPARTMENT OF TRANSPORTATION
RALEIGH
GENERAL DRAWING
DECK REPAIR OF
BRIDGE NO. 95-31-140 N & S
ON I-95 OVER LITTLE RIVER

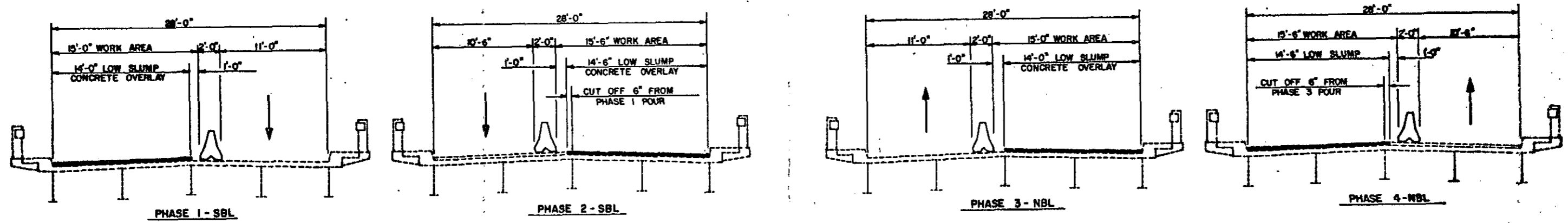
AUG. 1983



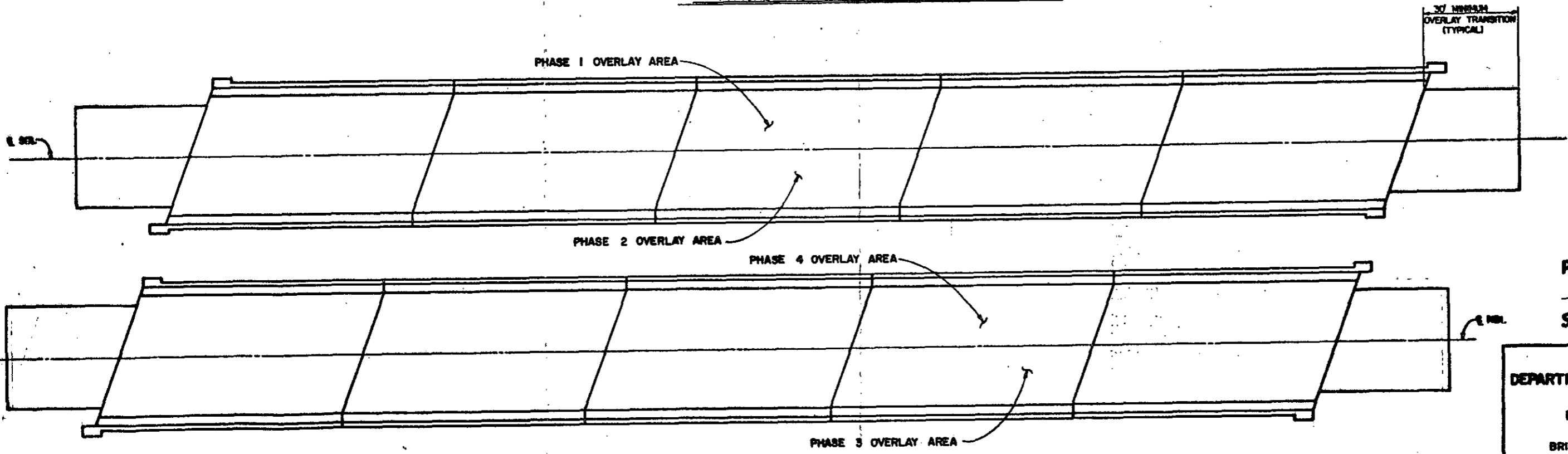
REVISIONS		DATE		BY	
1					
2					



TYPICAL SECTIONS FOR LATEX MODIFIED CONCRETE



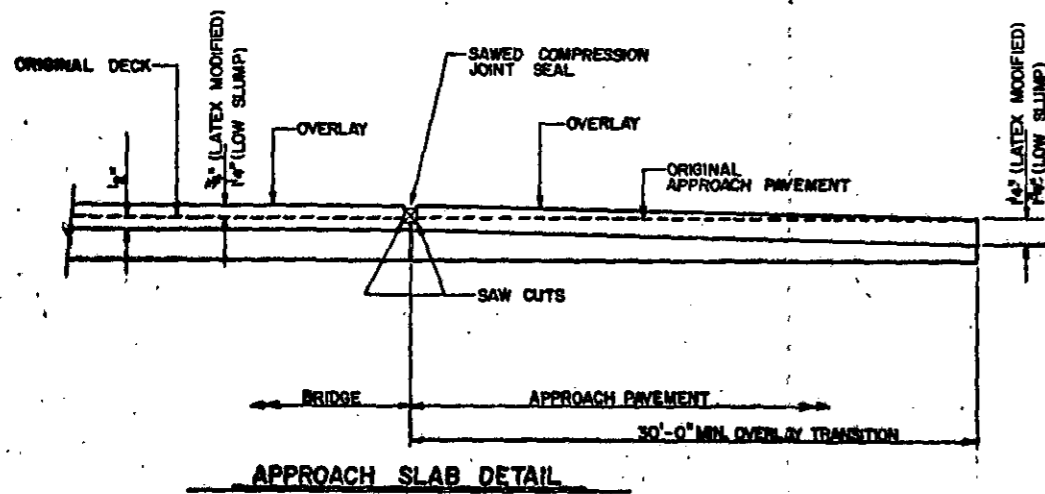
TYPICAL SECTIONS FOR LOW SLUMP CONCRETE



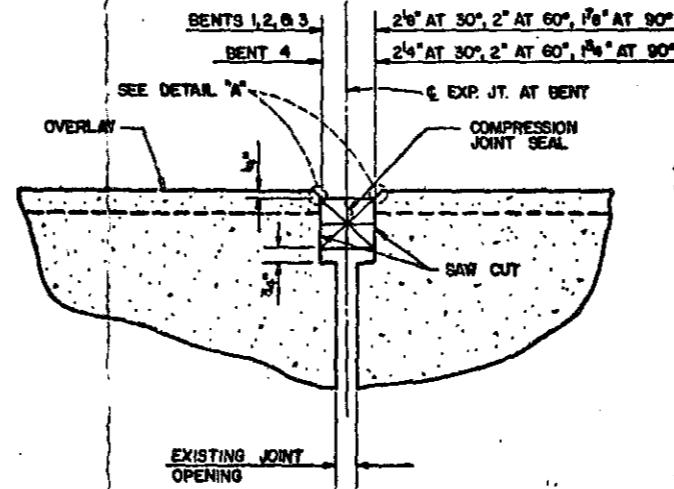
PROJECT No. 8.1310101
 JOHNSTON COUNTY
 STATION: 419+76.50 & MED.

STATE OF NORTH CAROLINA
 DEPARTMENT OF TRANSPORTATION
 RALEIGH
 PHASE PROCEDURE
 DECK REPAIR OF
 BRIDGE NO. 95-31-140 N & S

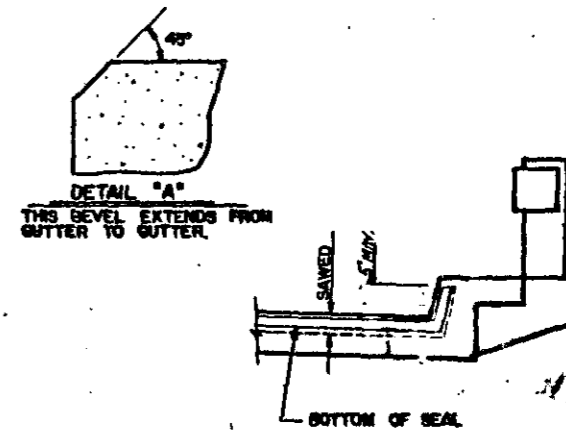
AUG. 1983		REVISIONS				SHEET NO. 5-5	
NO.	DATE	BY	CHKD.	DATE	NO.	DATE	TOTAL SHEETS 9
1					2		
2					3		



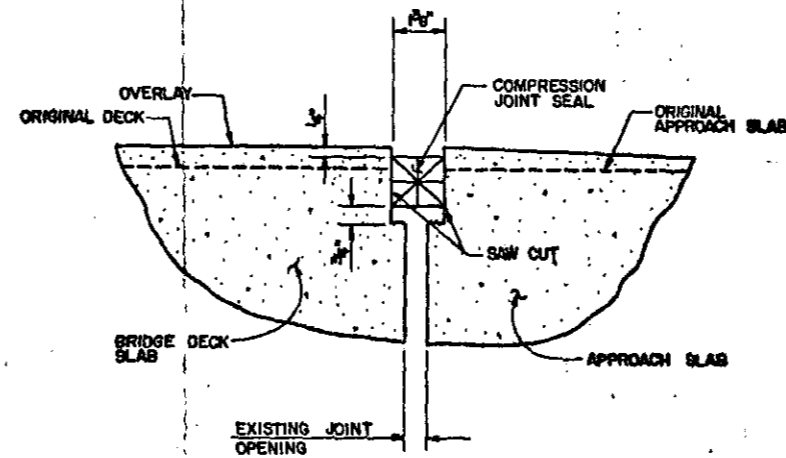
APPROACH SLAB DETAIL



COMPRESSION JOINT SEAL DETAIL
(IN BRIDGE DECK AT BENTS ONLY)



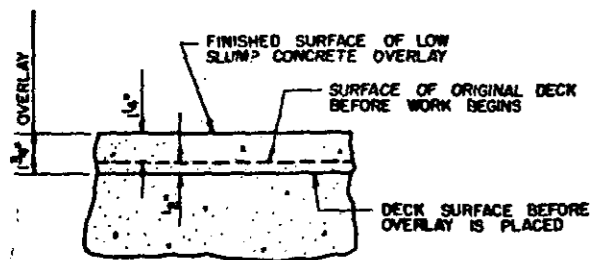
SKETCH SHOWING LIMITS OF COMPRESSION JOINT SEAL



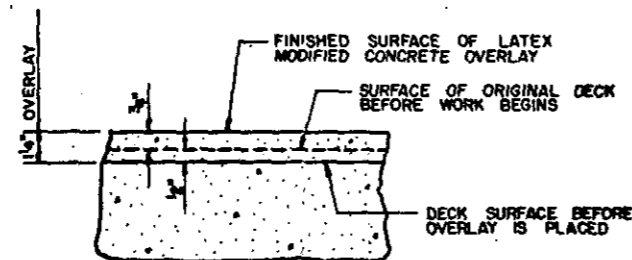
COMPRESSION JOINT SEAL DETAIL
(AT APPROACH SLAB ONLY)

NOTES:

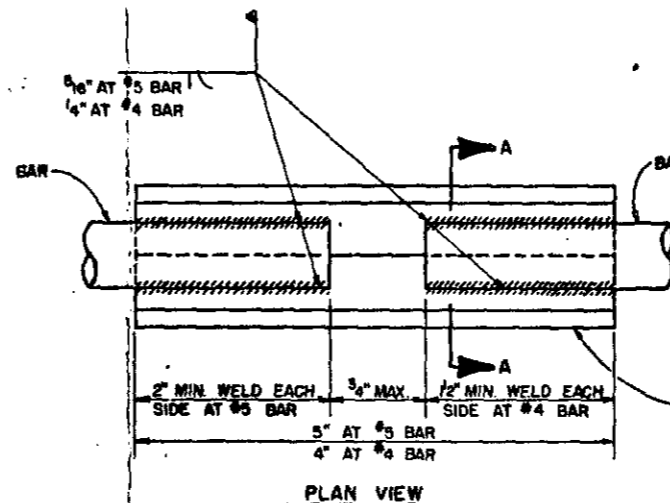
- For preformed compression joint seal, see Special Provisions.
- Preformed compression joint seal shall be paid for at the contract lump sum price. See General drawing.
- Opening shown is based on a nominal uncompressed seal width of 2" at approach slab, and 2" at bent.
- The installed compression seal shall be watertight.
- Provide watertight seal at end of compression seal as recommended by manufacturer.
- Compression seal extends from gutter to gutter along bridge deck width at approach slab only.



DETAIL FOR LOW SLUMP CONCRETE OVERLAY

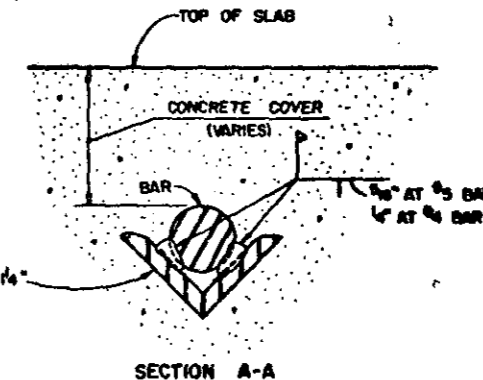


DETAIL FOR LATEX MODIFIED CONCRETE OVERLAY



WELD DETAIL FOR SPLICING REINFORCING STEEL

SPLICES OF REINFORCING STEEL SHALL BE WELDED AS DETAILED AND ALL WELDING SHALL CONFORM TO THE LATEST EDITION OF THE AMERICAN WELDING SOCIETY REINFORCING STEEL WELDING CODE (A.W.S. D12.1). CHEMICAL ANALYSIS OF THE EXISTING REINFORCING STEEL WILL NOT BE REQUIRED.



SECTION A-A

PROJECT No. 6.1310101
JOHNSTON COUNTY
STATION: 419+76.50 & MED.

STATE OF NORTH CAROLINA
DEPARTMENT OF TRANSPORTATION
RALEIGH
SECTIONS AND DETAILS
DECK REPAIR OF
BRIDGE NO. 95-31-140 N&S

ALB 1983

MAZ. ENGINEER & ARCHITECT, INC.
SPECIALTY DESIGN GROUP

REVISIONS		DATE		BY		CHECKED	
NO.	DESCRIPTION	DATE	BY	DATE	BY	DATE	BY
1							
2							

SHEET 5-6
TOTAL SHEETS 9