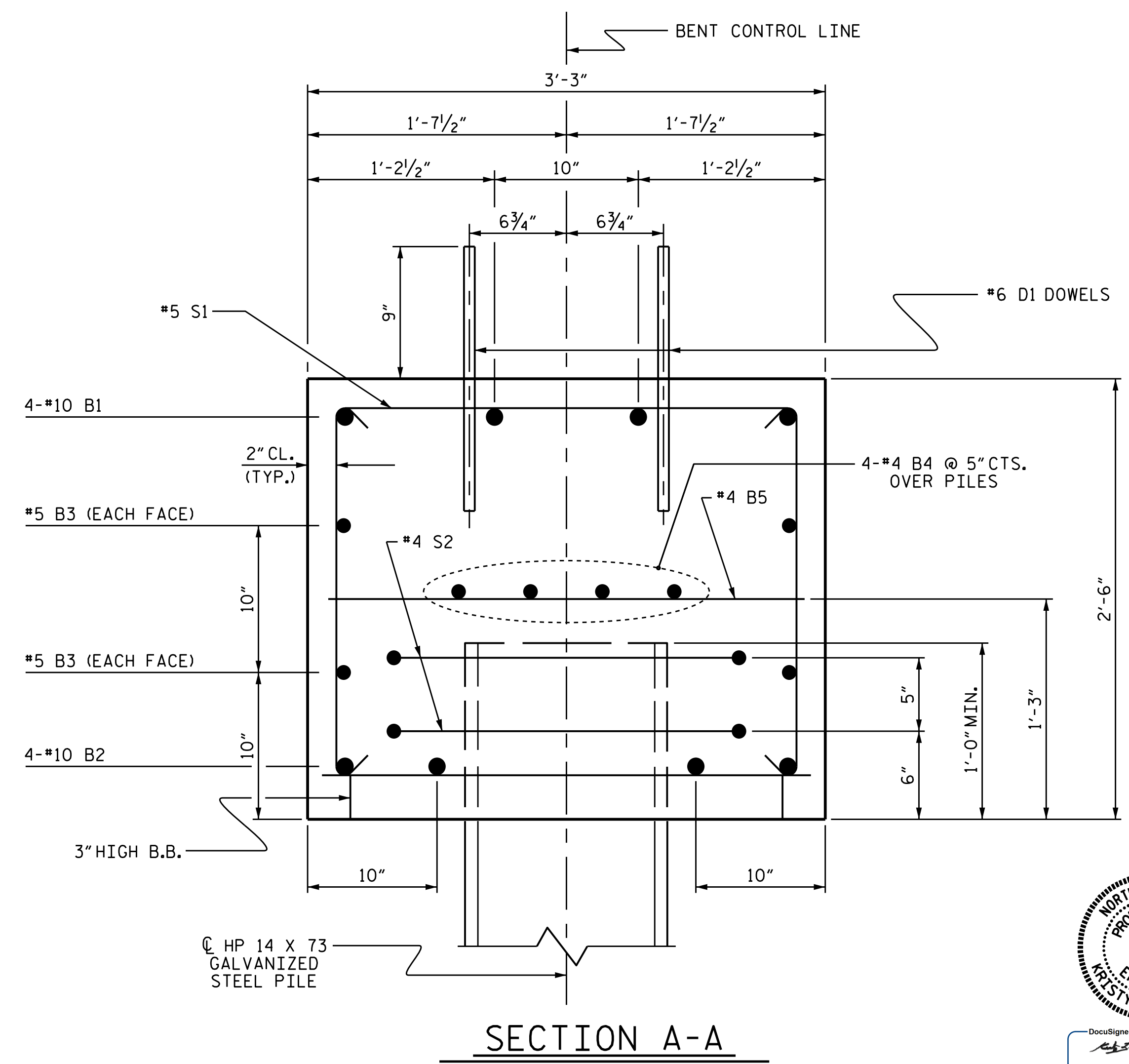
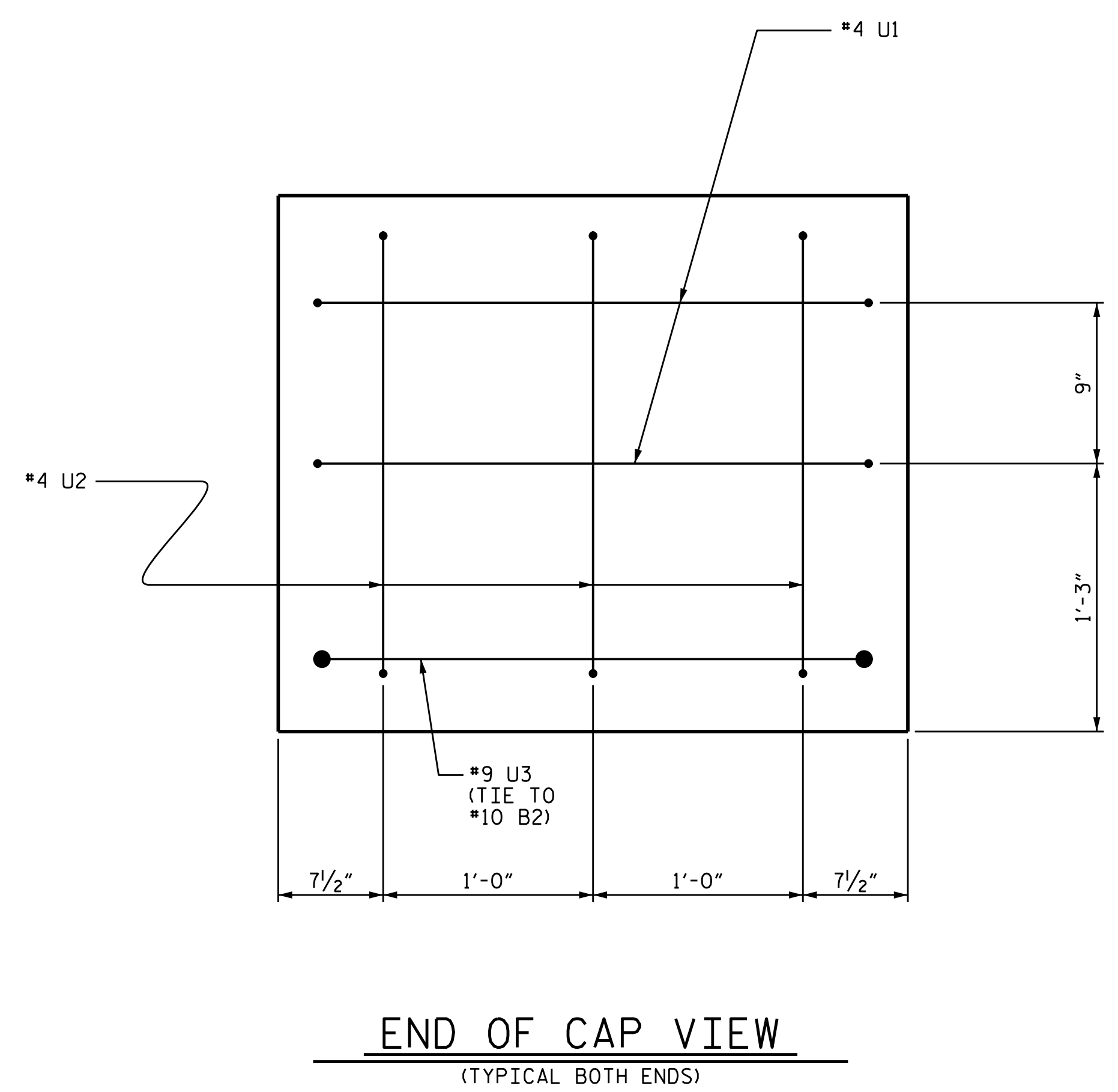


BILL OF MATERIAL FOR ONE BENT					
BAR NO.	NO.	SIZE	TYPE	LENGTH	WEIGHT
B1	4	#10	1	37'-10"	651
B2	4	#10	STR	35'-2"	605
B3	4	#5	STR	35'-2"	147
B4	8	#4	STR	18'-10"	101
B5	9	#4	STR	2'-11"	18
D1	44	#6	STR	1'-6"	99
S1	39	#5	2	8'-1"	329
S2	16	#4	3	7'-7"	81
U1	4	#4	4	5'-10"	16
U2	6	#4	4	5'-0"	20
U3	2	#9	4	10'-1"	69
REINFORCING STEEL (FOR ONE BENT)					2136 LBS
CLASS A CONCRETE BREAKDOWN (FOR ONE BENT)					
TOTAL CLASS A CONCRETE					10.7 C.Y.
HP 14 X 73 GALVANIZED STEEL PILES BENT 1					
No. 8 LIN. FT. 440.0 PILE REDRIVES = 4 EA. STEEL PILE POINTS = 8					
HP 14 X 73 GALVANIZED STEEL PILES BENT 2					
No. 8 LIN. FT. 440.0 PILE REDRIVES = 4 EA. STEEL PILE POINTS = 8					



PROJECT NO. B-5331
COLUMBUS COUNTY
 STATION: 15+20.00 -L-

SHEET 3 OF 3

STATE OF NORTH CAROLINA
 DEPARTMENT OF TRANSPORTATION
 RALEIGH
 SUBSTRUCTURE
 BENT DETAILS 1 & 2



DRAWN BY : D.SHACKELFORD	DATE : 01/15
CHECKED BY : J.P. ADAMS	DATE : 02/15
DRAWN BY : DCE 05/10	REV. 11/14
CHECKED BY : MKT 05/10	MAA/TMG

23-SEP-2015 09:26
 R:\Structures\Plans\Sub.Draw\B-5331.SD.B*.dgn
 jpodams

REVISIONS					SHEET NO.
NO.	BY:	DATE:	NO.	BY:	DATE:
1			3		
2			4		

TOTAL SHEETS 18