

GEOTECHNICAL ENGINEER

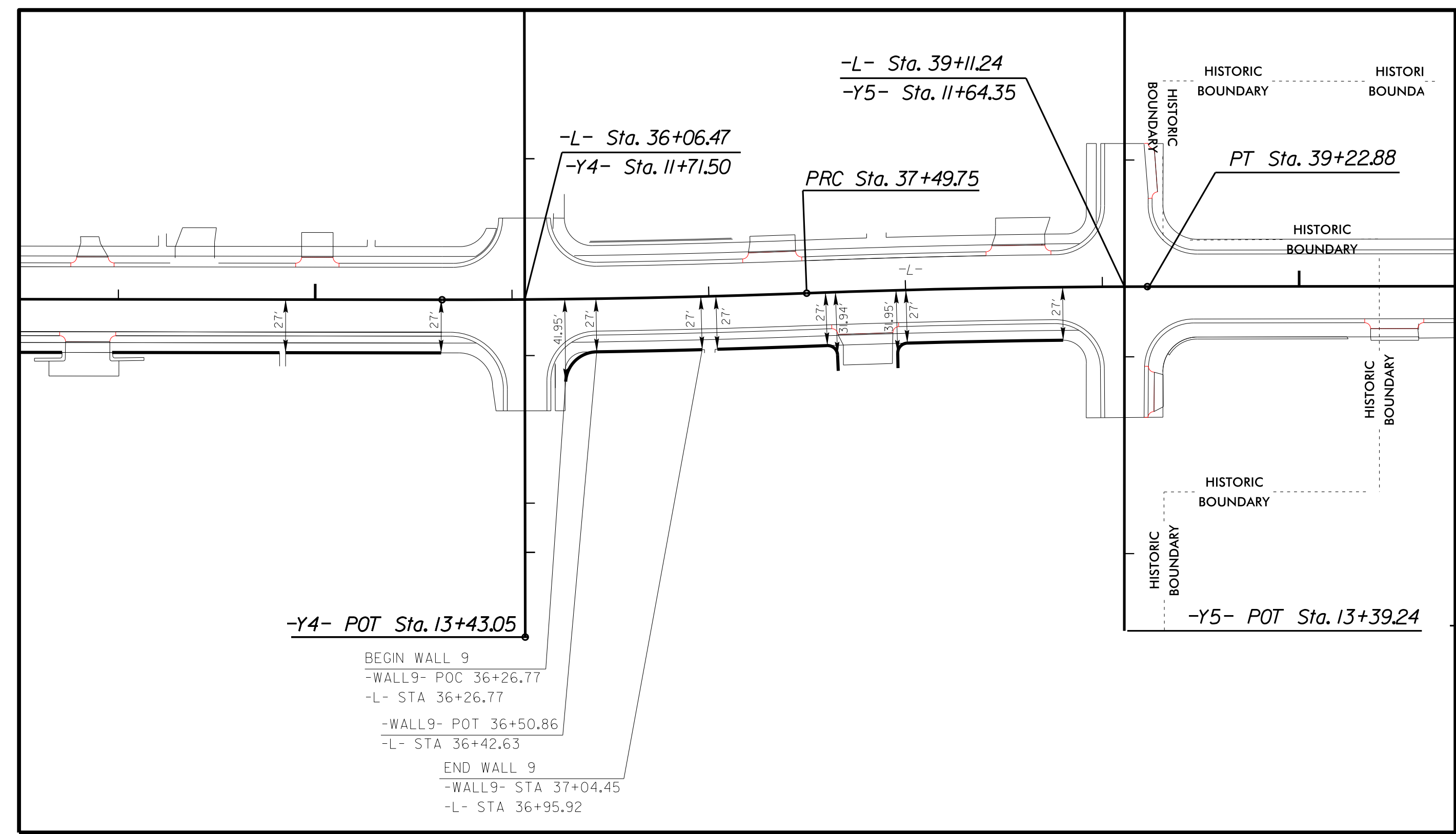
ENGINEER

SEAL 29869

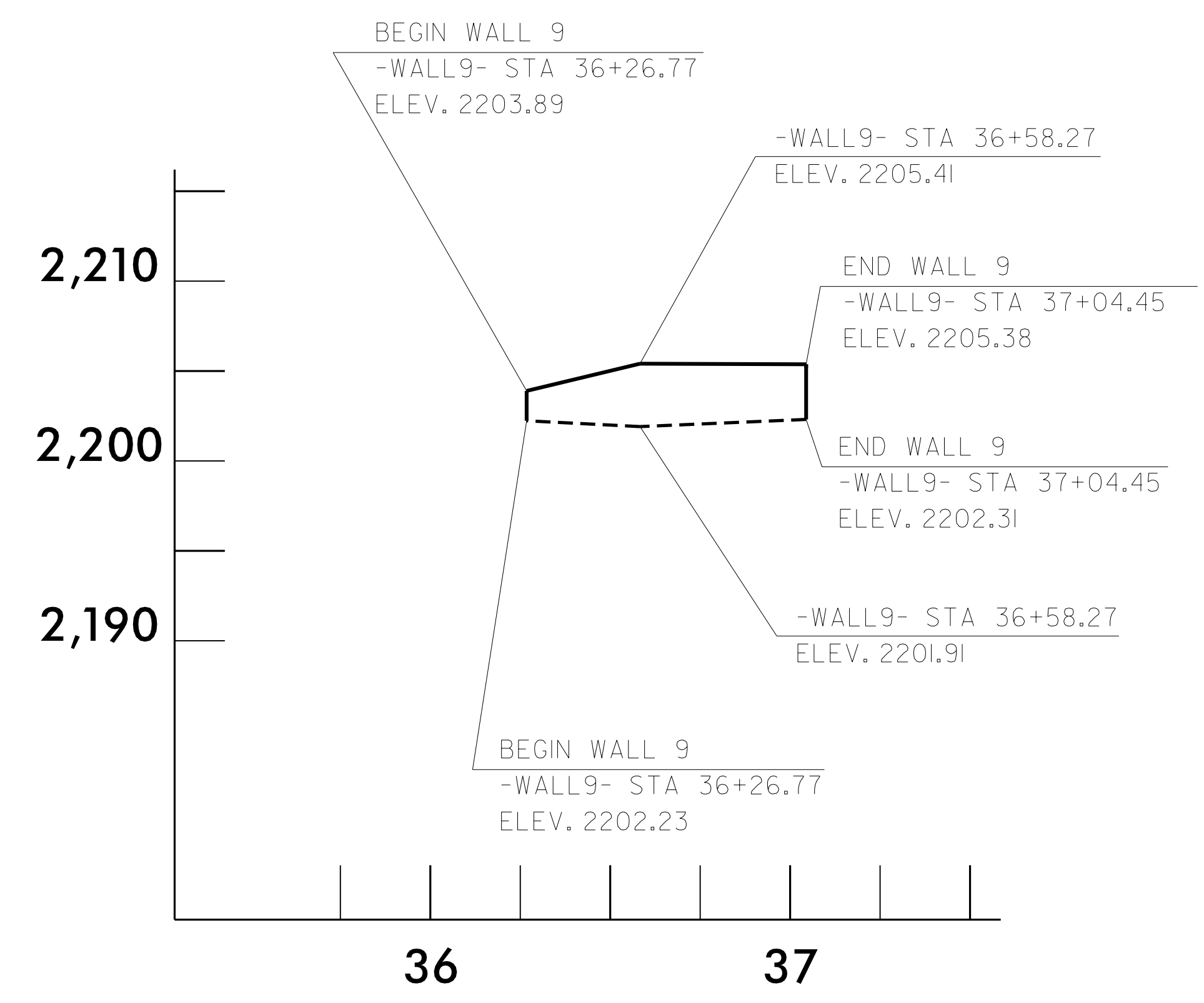
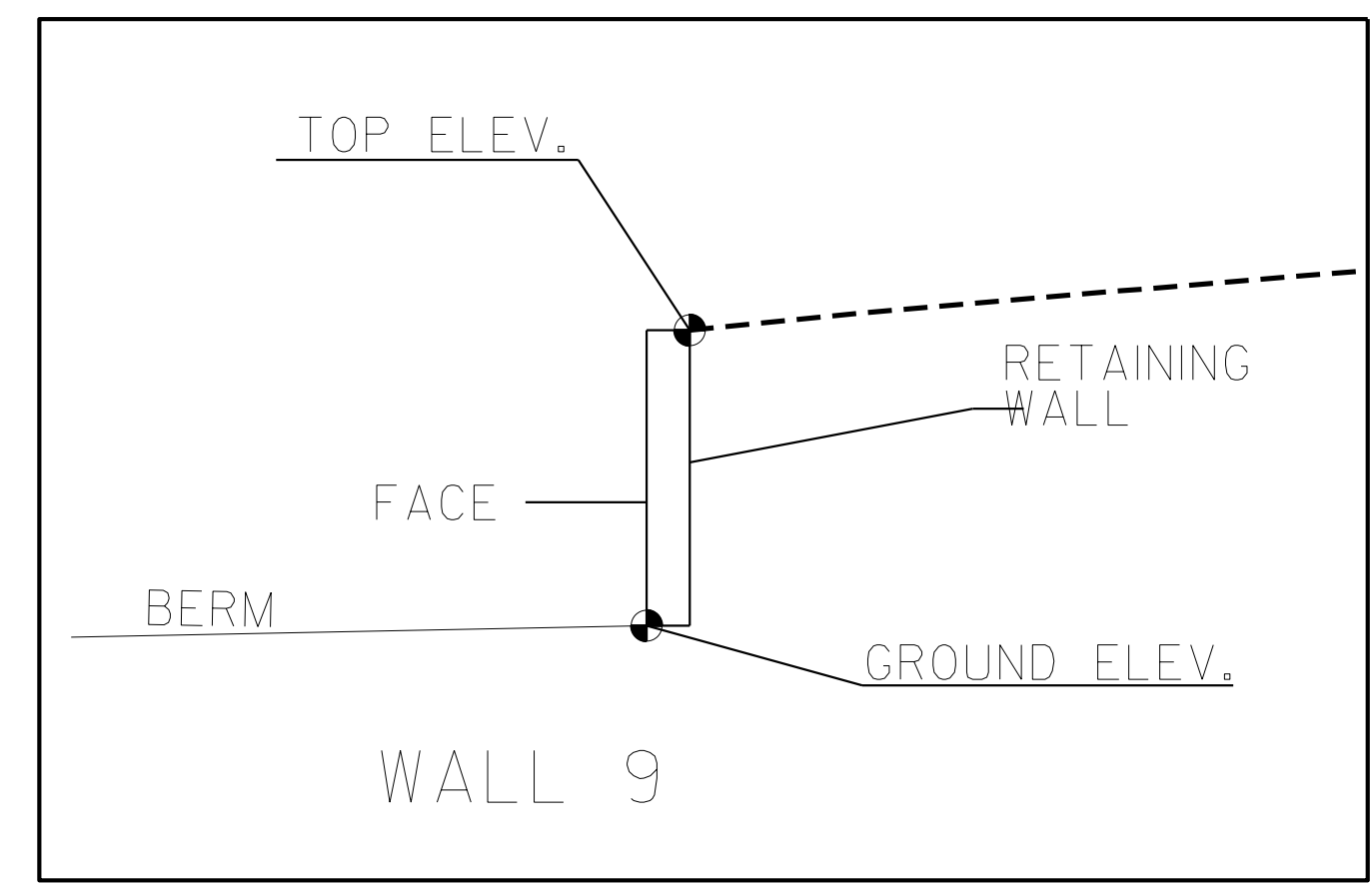
Slane C. Clark

8/21/2015

SIGNATURE DATE SIGNATURE DATE



LOCATION SKETCH



WALL ENEVELOPE

ESTIMATED WALL QUANTITY

RETAINING WALL NO.	CAST-IN-PLACE GRAVITY RETAINING WALL (SQ. FEET)
9	235

PROJECT NO.: U-5104

TRANSYLVANIA COUNTY

STATION: 36+26.77 -L- TO 36+95.92 -L-

SHEET 7 OF 10

NORTH CAROLINA DEPARTMENT OF TRANSPORTATION DIVISION OF HIGHWAYS

GEOTECHNICAL ENGINEERING UNIT

CAST IN PLACE (CIP) GRAVITY RETAINING WALL #9

REVISIONS						SHEET NO.
NO.	BY	DATE	NO.	BY	DATE	
1			3			W-16
2			4			

PREPARED BY: EJS DATE: 7/15

REVIEWED BY: SCC DATE: 7/15