

GEOTECHNICAL ENGINEER

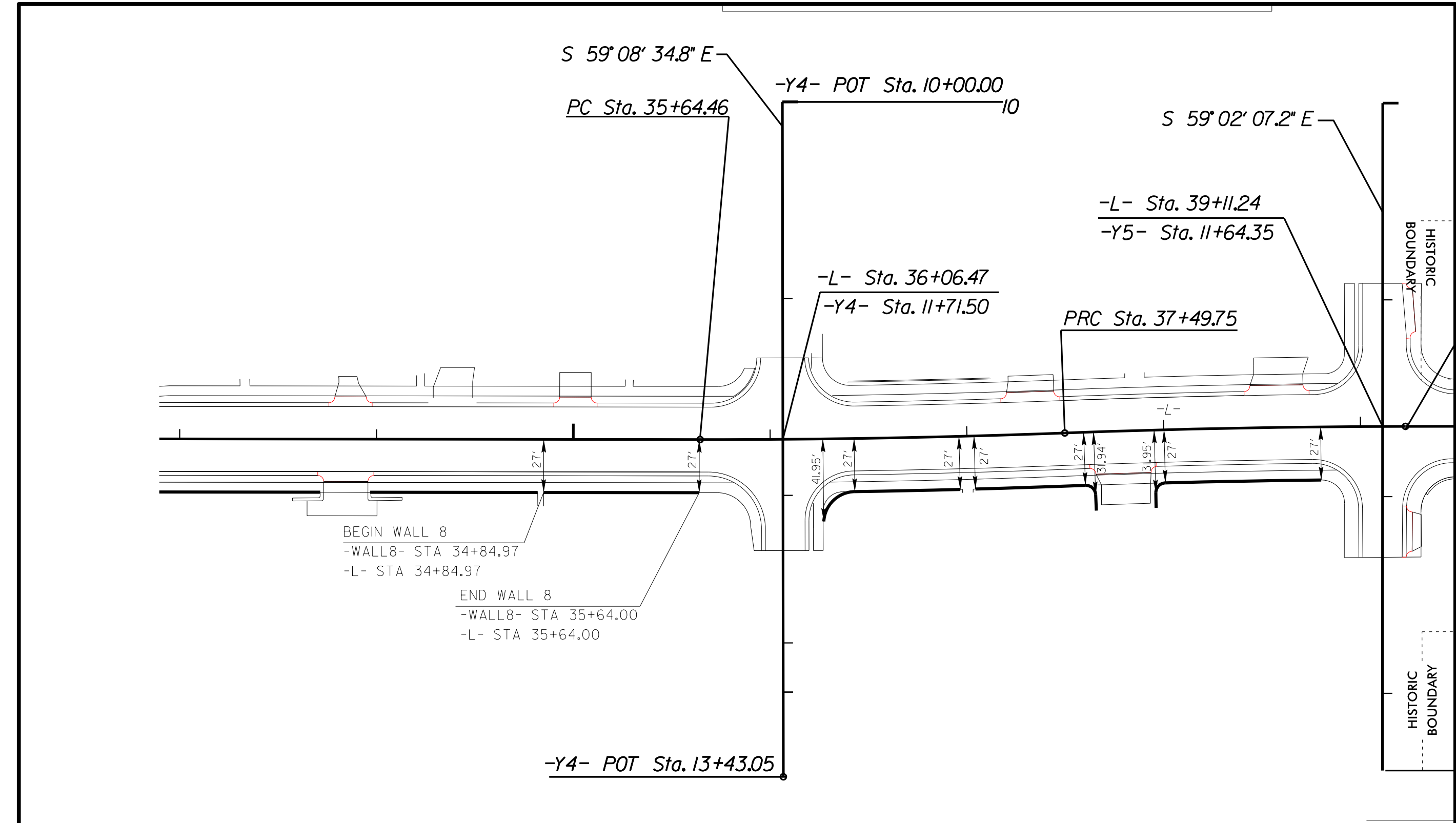
ENGINEER

SEAL 29869

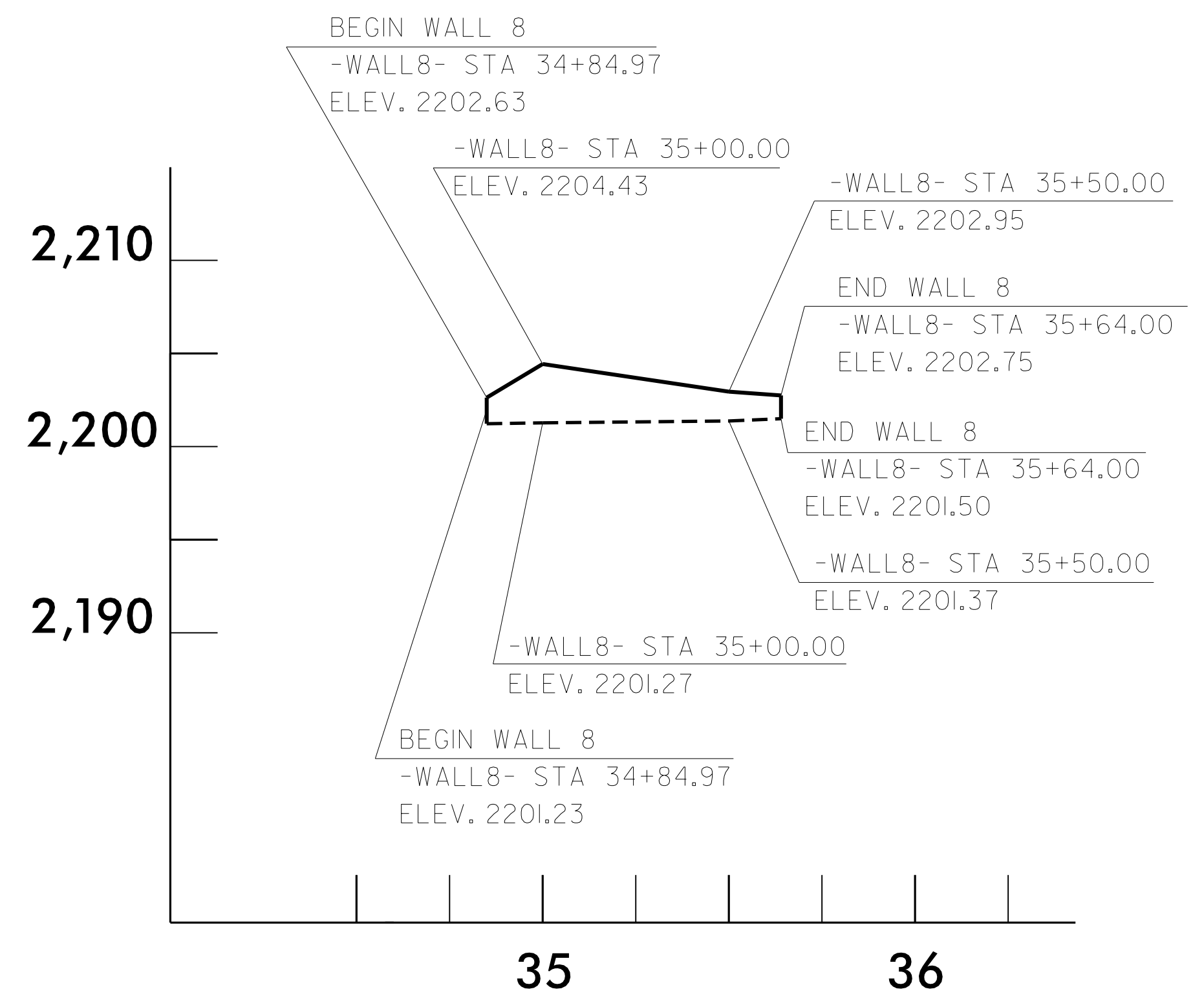
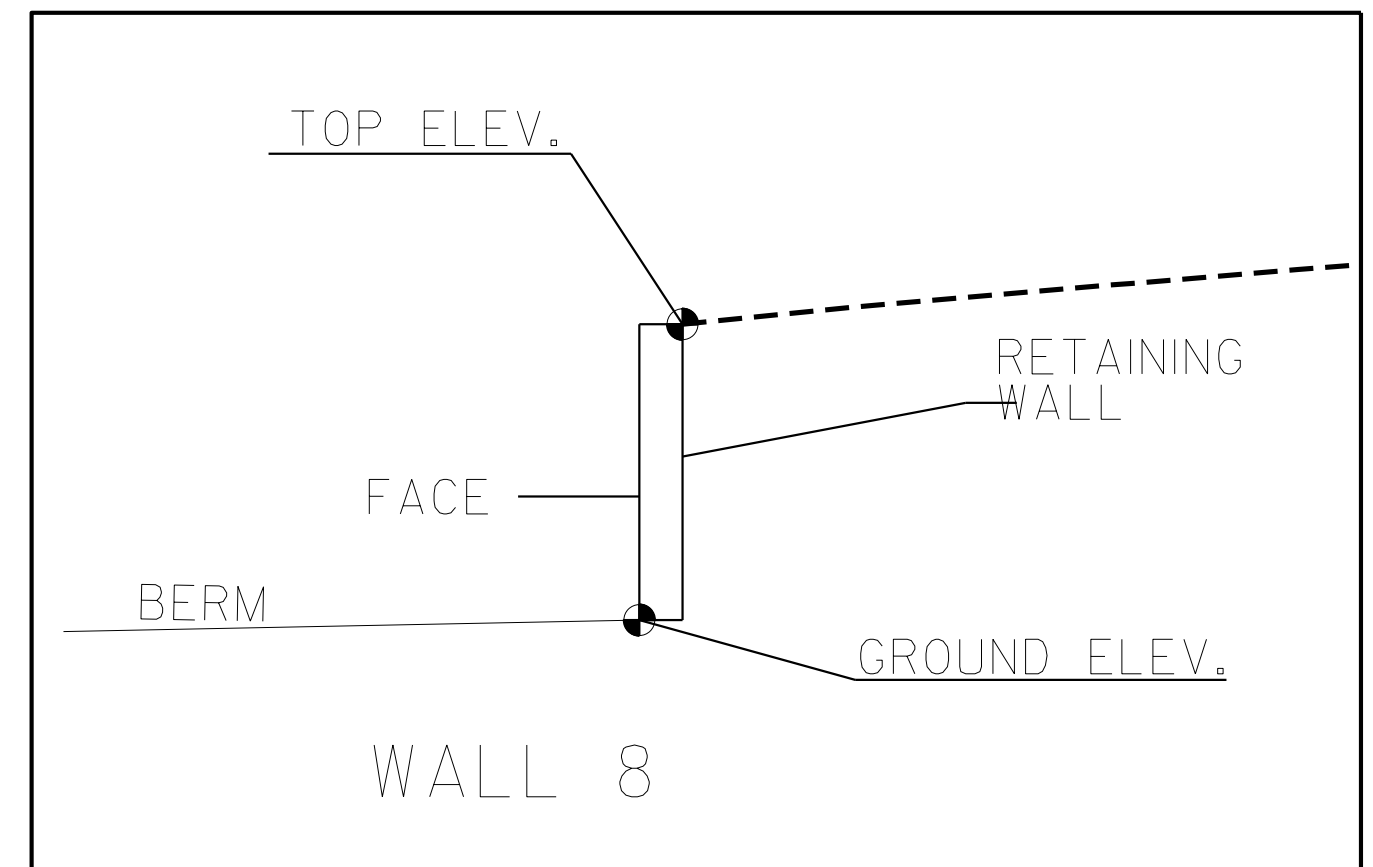
Slone C. Clark

8/21/2015

SIGNATURE DATE SIGNATURE DATE



LOCATION SKETCH



WALL ENEVELOPE

ESTIMATED WALL QUANTITY

RETAINING WALL NO.	CAST-IN-PLACE GRAVITY RETAINING WALL (SQUARE FEET)
8	175

PROJECT NO.: U-5104

TRANSYLVANIA COUNTY

STATION: 34+84.97 -L- TO 35+64.00 -L-

SHEET 6 OF 10

PREPARED BY: EJS DATE: 7/15

REVIEWED BY: SCC DATE: 7/15

NORTH CAROLINA DEPARTMENT OF TRANSPORTATION DIVISION OF HIGHWAYS

GEOTECHNICAL ENGINEERING UNIT

CAST IN PLACE (CIP) GRAVITY RETAINING WALL #8

REVISIONS					
NO.	BY	DATE	NO.	BY	DATE
1			3		
2			4		

SHEET NO. W-15