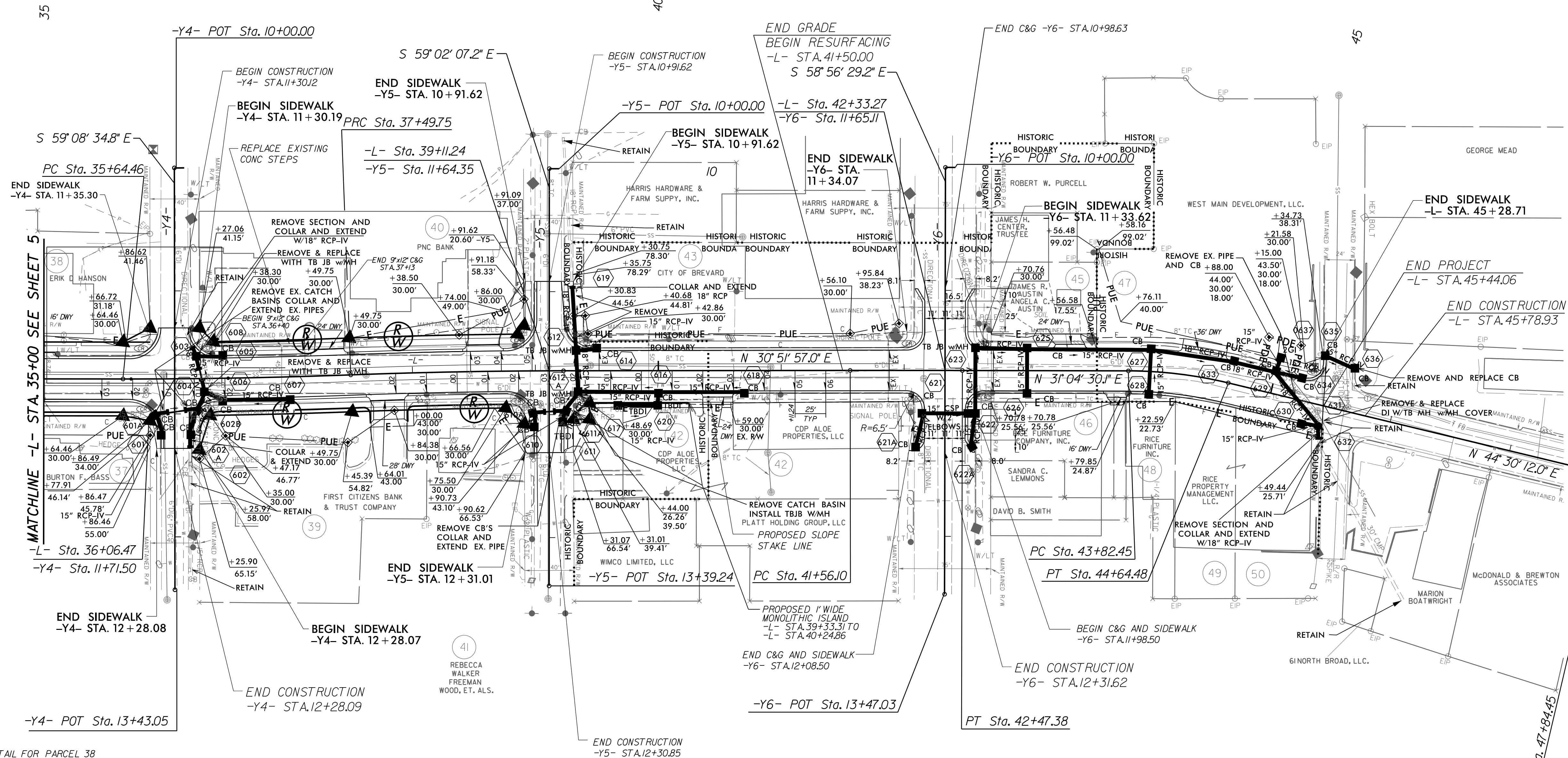
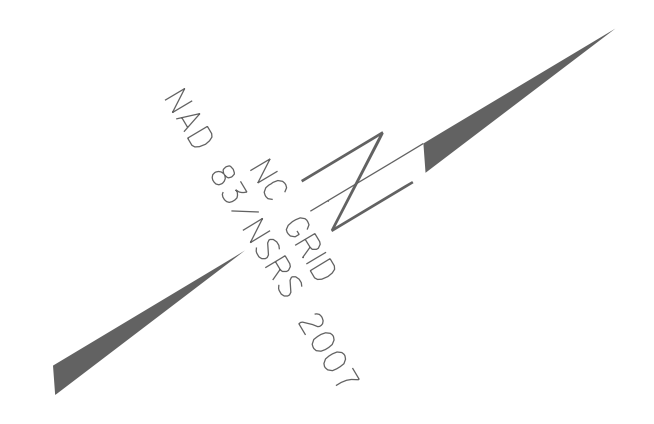
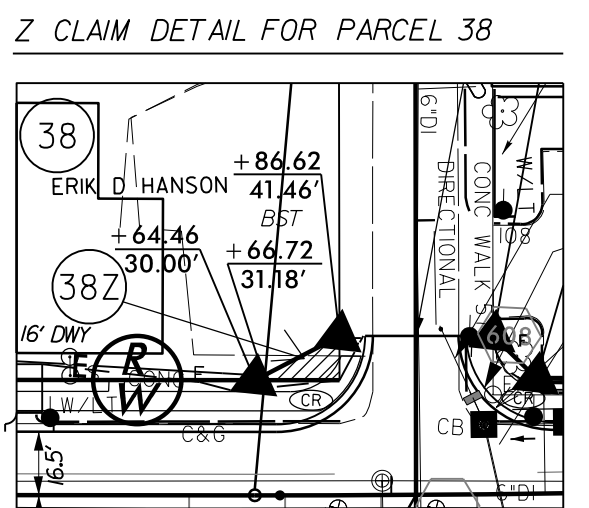


PROJECT REFERENCE NO. U-5104		SHEET NO. 6	
ROADWAY DESIGN ENGINEER 8/14/2015		HYDRAULICS ENGINEER 8/14/2015	
1025 Wade Avenue Raleigh, NC 27605 Tel: 919-789-9977 Fax: 919-789-9591 License: C-2197			

-L-			
PI Sta 36+57.11	PI Sta 38+36.32	PI Sta 42+01.74	PI Sta 44+23.66
$\Delta = 2' 12" 42.3" (LT)$	$\Delta = 2' 04" 00.0" (RT)$	$\Delta = 0' 12" 33.1" (RT)$	$\Delta = 13' 25" 41.9" (RT)$
D = 1' 11" 37.2"	D = 1' 11" 37.2"	D = 0' 13" 45.1"	D = 16' 22" 12.8"
L = 185.29'	L = 173.14'	L = 91.28'	L = 82.03'
T = 92.66'	T = 86.58'	T = 45.64'	T = 41.20'
R = 4,800.00'	R = 4,800.00'	R = 25,000.00'	R = 350.00'



REVISIONS



NOTE: RETAINING WALLS
 -L- STA. 36+26.77 RT -L- STA. 36+95.92 RT (WALL 9)
 -L- STA. 37+03.59 RT -L- STA. 37+64.42 RT (WALL 10)
 -L- STA. 37+95.06 RT -L- STA. 38+79.80 RT (WALL 11)

SEE SHEET 2B-1 FOR DETAILS OF INTERSECTIONS -Y4- AND -Y5- & -L-
 SEE SHEET 2B-2 FOR DETAILS OF INTERSECTION -Y6- & -L-
 SEE SHEETS 7 & 8 FOR -L- PROFILE
 SEE SHEET 9 FOR -Y4- & -Y5- PROFILE