

PROJECT REFERENCE NO. U-5104		SHEET NO. 5	
ROADWAY DESIGN ENGINEER 8/14/2015		HYDRAULICS ENGINEER 8/14/2015	
		1025 Wade Avenue Raleigh, NC 27605 Tel: 919-789-9977 Fax: 919-789-9591 License: C-2197	

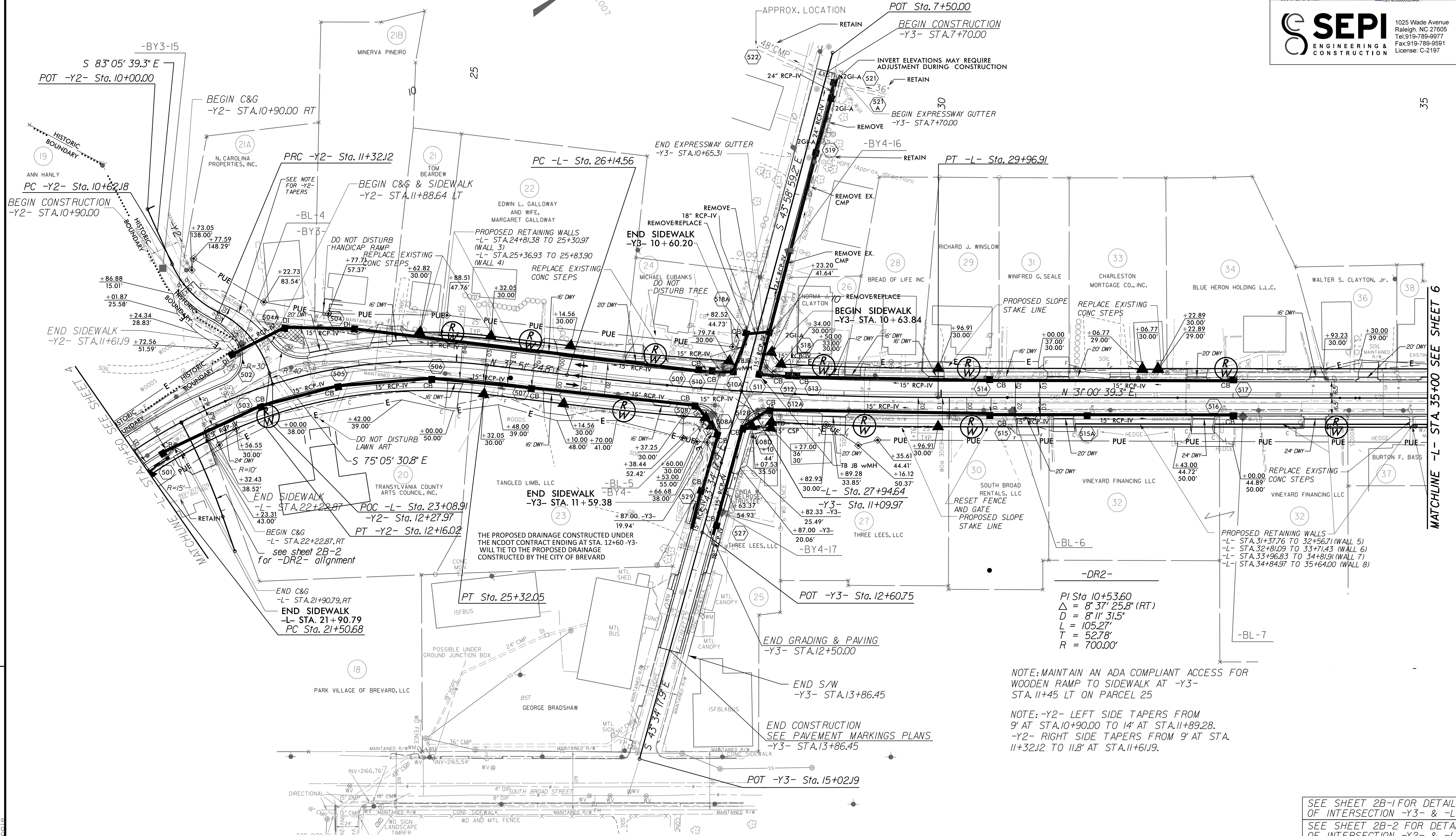
**-Y2-**  
 PI Sta 10+98.64  
 $\Delta = 40^{\circ} 04' 22.9"$  (LT)  
 $D = 57' 17" 44.8"$   
 $L = 69.94'$   
 $T = 36.47'$   
 $R = 100.00'$

**-DR2-**  
 PI Sta 11+76.72  
 $\Delta = 48^{\circ} 04' 31.3"$  (RT)  
 $D = 57' 17" 44.8"$   
 $L = 83.91'$   
 $T = 44.60'$   
 $R = 100.00'$

**-L-**  
 PI Sta 10+53.60  
 $\Delta = 8^{\circ} 37' 25.8"$  (RT)  
 $D = 8' 11' 31.5"$   
 $L = 105.27'$   
 $T = 52.78'$   
 $R = 700.00'$

**-L-**  
 PI Sta 23+49.94  
 $\Delta = 40^{\circ} 59' 46.8"$  (RT)  
 $D = 10' 44' 58.8"$   
 $L = 381.37'$   
 $T = 199.26'$   
 $R = 533.00'$

**-L-**  
 PI Sta 28+05.97  
 $\Delta = 6^{\circ} 50' 45.5"$  (LT)  
 $D = 1' 47' 25.8"$   
 $L = 382.35'$   
 $T = 191.40'$   
 $R = 3,200.00'$



REVISIONS

MATCHLINE -L- STA. 35+00 SEE SHEET 6

NOTE: MAINTAIN AN ADA COMPLIANT ACCESS FOR WOODEN RAMP TO SIDEWALK AT -Y3- STA. 11+45 LT ON PARCEL 25

NOTE: -Y2- LEFT SIDE TAPERS FROM 9' AT STA. 10+90.00 TO 14' AT STA. 11+89.28, -Y2- RIGHT SIDE TAPERS FROM 9' AT STA. 11+32.12 TO 11.8' AT STA. 11+61.9.

SEE SHEET 2B-1 FOR DETAIL OF INTERSECTION -Y3- & -L-  
 SEE SHEET 2B-2 FOR DETAIL OF INTERSECTION -Y2- & -L-

SEE SHEET 7 FOR -L- PROFILE  
 SEE SHEET 8 FOR -Y2- & -Y3- PROFILE  
 SEE SHEET 9 FOR -DR1- PROFILE

8/13/2015 15:04\_r\_dj\_psh05.dgn  
 11:56:00 AM