

**This electronic collection of documents is provided
for the convenience of the user
and is Not a Certified Document –**

**The documents contained herein were originally issued
and sealed by the individuals whose names and license
numbers appear on each page, on the dates appearing
with their signature on that page.**

**This file or an individual page
shall not be considered a certified document.**

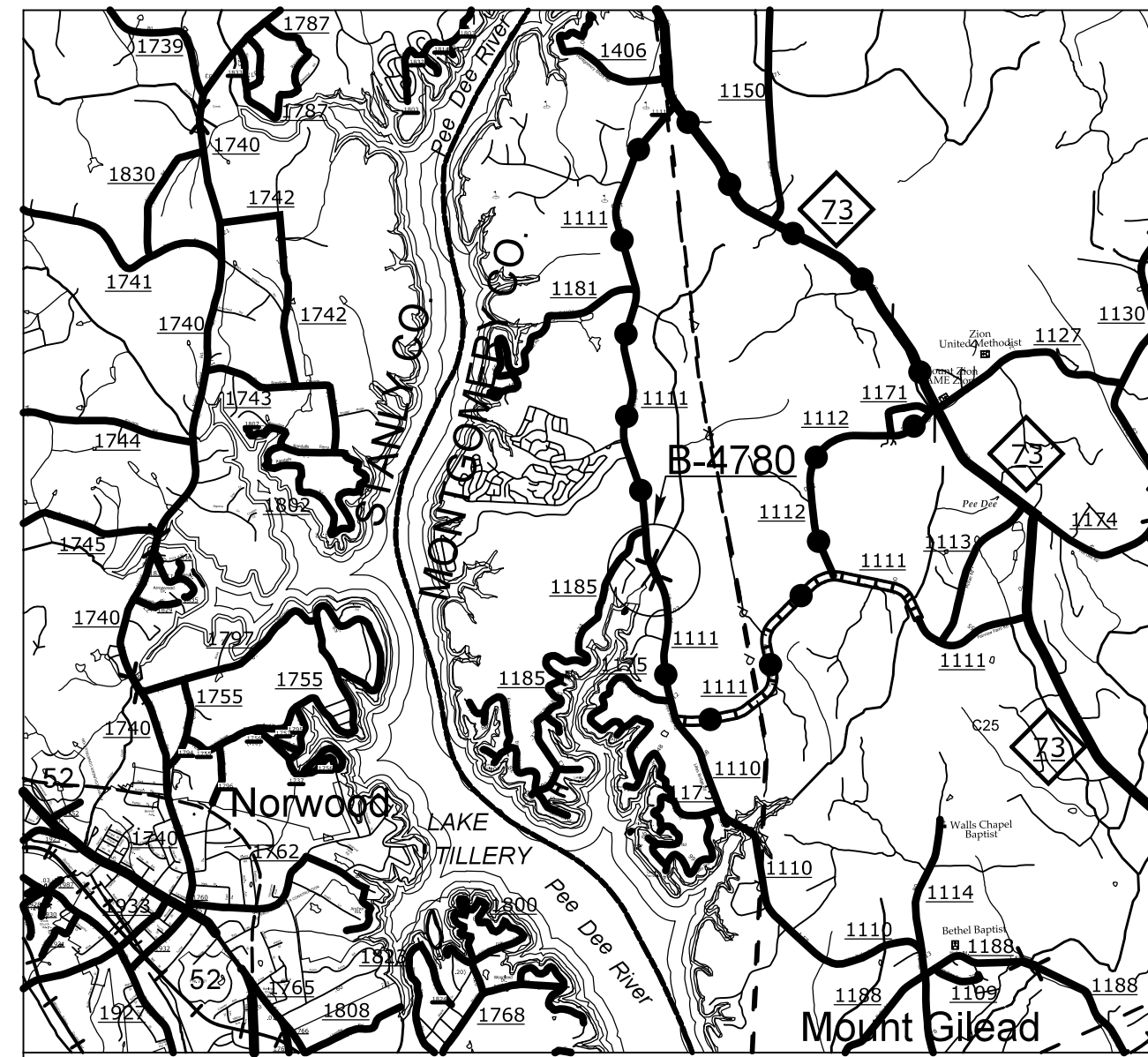
TIP PROJECT: B-4780

STATE OF NORTH CAROLINA
DIVISION OF HIGHWAYS

T.I.P. NO.	SHEET NO.
B-4780	UO-1

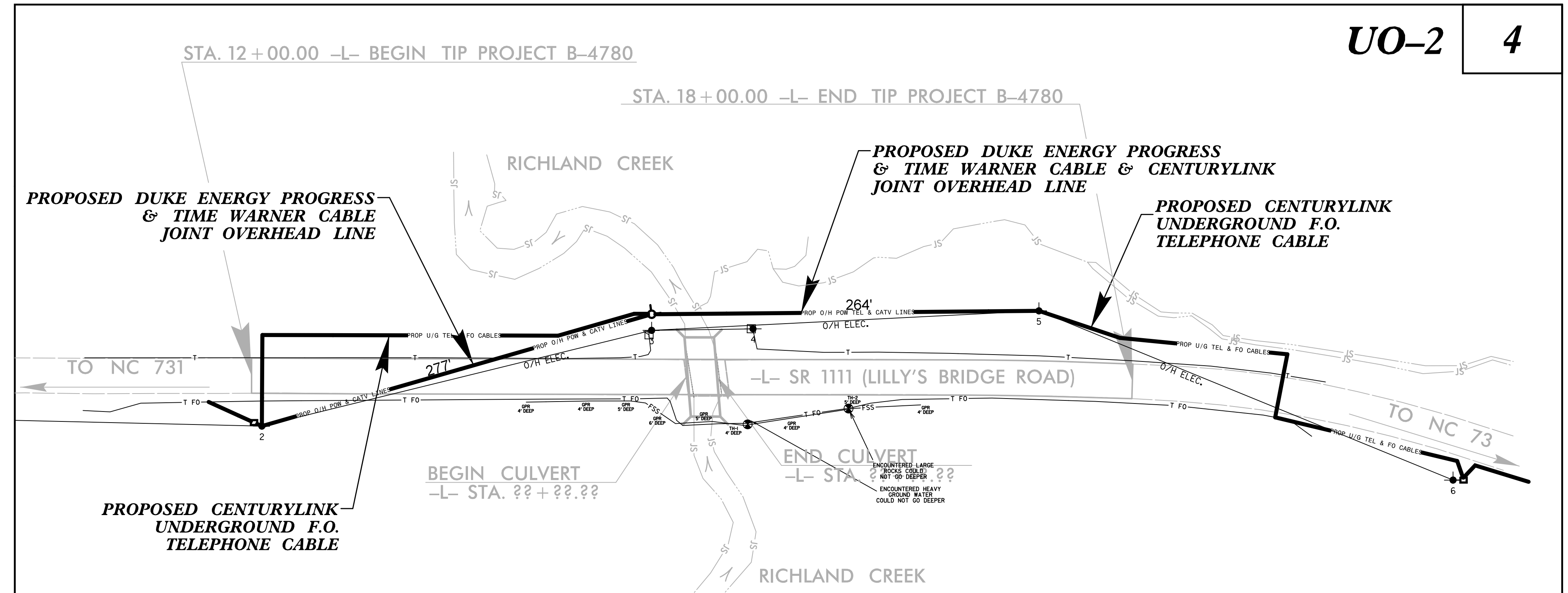
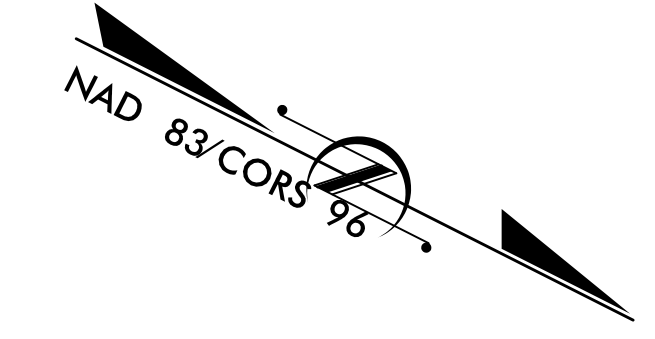
**UTILITIES BY OTHERS PLANS
MONTGOMERY COUNTY**

LOCATION: BRIDGE NO. 22 ON SR 1111 (LILLY'S BRIDGE ROAD)
OVER RICHLAND CREEK
TYPE OF WORK: POWER DISTRIBUTION, TELEPHONE, CATV



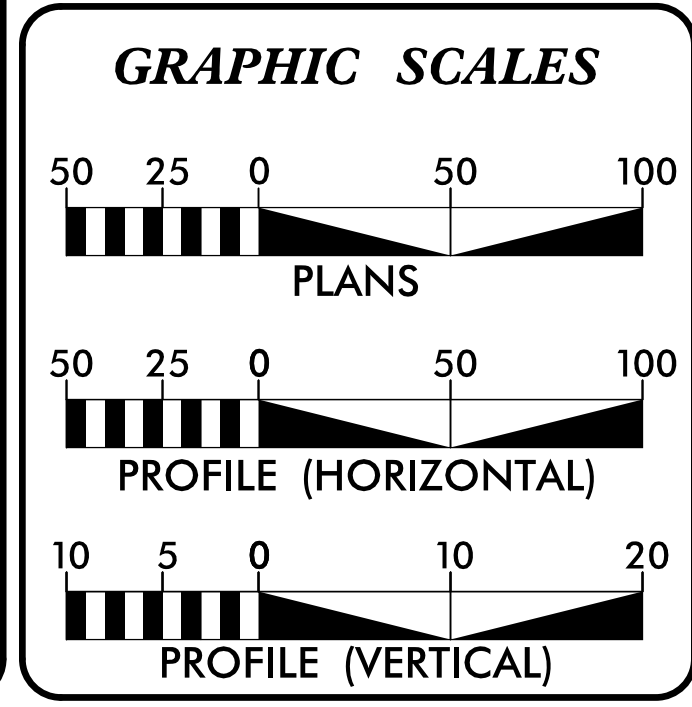
VICINITY MAP

●—●—● OFFSITE DETOUR



UO-2 4

THIS PROJECT IS NOT WITHIN ANY MUNICIPAL BOUNDARIES.
CLEARING ON THIS PROJECT SHALL BE PERFORMED TO THE LIMITS ESTABLISHED BY METHOD ____.



INDEX OF SHEETS

SHEET NO.	DESCRIPTION
UO-1	TITLE SHEET
UO-2	UBO PLAN SHEET

- PRIVATE UTILITY OWNERS ON PROJECT**
- POWER - DUKE ENERGY PROGRESS
 - TELECOMMUNICATIONS - CENTURYLINK
 - CATV - TIME WARNER CABLE

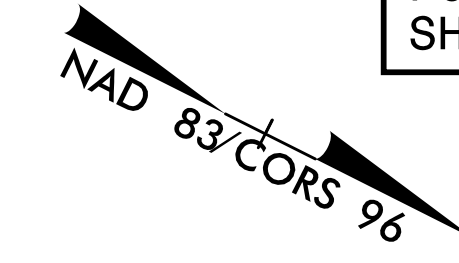
HINDE ENGINEERING
License No. C-2639
7520 E. Independence Blvd., Suite 230 Charlotte, NC 28227

PREPARED IN THE OFFICE OF:
**DIVISION OF HIGHWAYS
UTILITIES UNIT
UTILITIES ENGINEERING**
1555 MAIL SERVICES CENTER
RALEIGH NC 27699-1555
PHONE (919) 707-6690
FAX (919) 250-4151

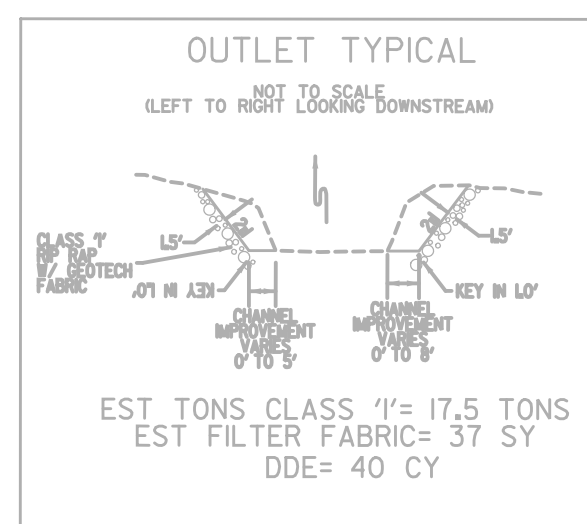
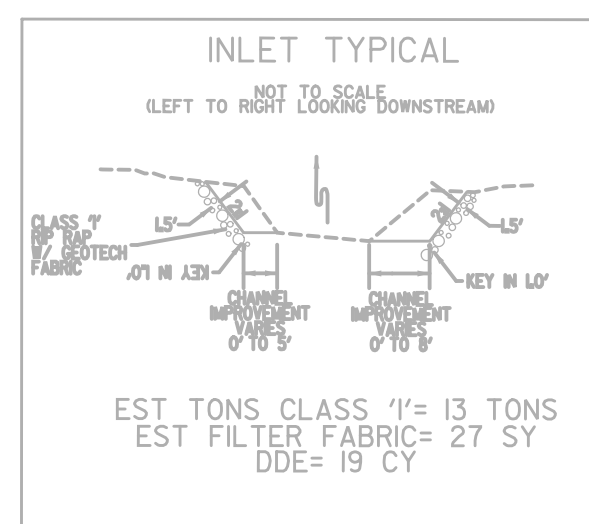
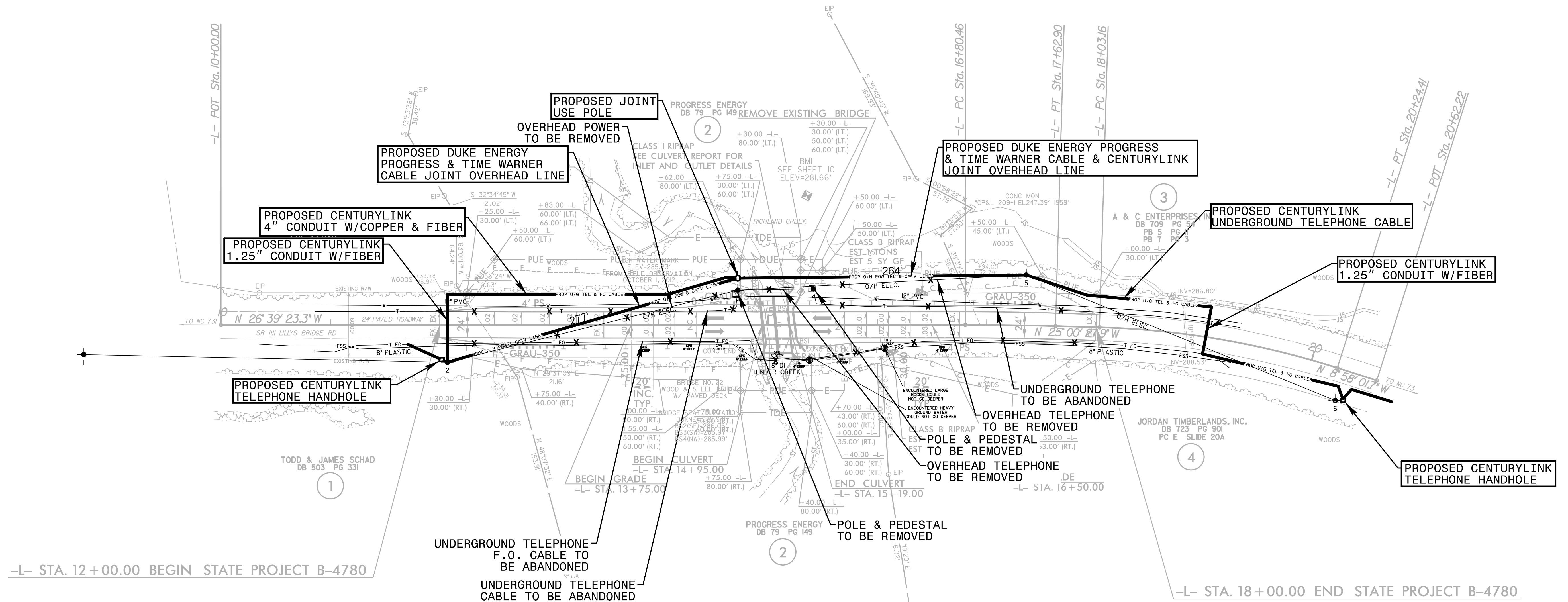
Roger Worthington, P.E. UTILITIES SECTION ENGINEER
Steve Mckee, P.E. UTILITIES SQUAD LEADER PROJECT ENGINEER
Don Proper UTILITIES PROJECT DESIGN ENGINEER

UTILITIES BY OTHERS

NOTE:
 ALL PROPOSED UTILITY WORK SHOWN ON THIS SHEET WILL BE DONE BY OTHERS. NO PAYMENT WILL BE MADE TO THE CONTRACTOR FOR PROPOSED UTILITY WORK SHOWN ON THIS SHEET.



-L-	
PI Sta 17+21.68	PI Sta 19+14.51
$\Delta = 1^{\circ} 38' 55.4''$ (RT)	$\Delta = 16^{\circ} 02' 26.3''$ (RT)
D = 2' 00' 00.0"	D = 7' 15' 00.0"
L = 82.44'	L = 221.25'
T = 41.22'	T = 111.35'
R = 2,864.79'	R = 790.29'



5/14/99