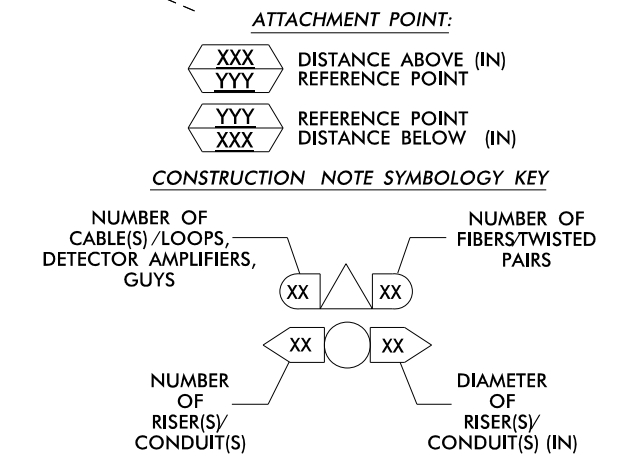


NOTES:

- UNLESS OTHERWISE NOTED:
  - OVERLASH NEW FIBER OPTIC CABLE TO EXISTING COMMUNICATIONS CABLE.
  - ATTACH NEW MESSENGER CABLE 40" BELOW POWER.
  - ATTACH ON FRONT SIDE (FS) OF POLE.
- SEAL ALL CONDUIT ENDS WITH DUCT AND CONDUIT SEALER, AT ALL JUNCTION BOX / CABINET ENTRANCES.

|  |   |  |   |   |  |
|--|---|--|---|---|--|
| 1 INSTALL COMPOSITE CCTV CABLE                                   | 13 INSTALL HEAT SHRINK TUBING RETROFIT KIT  | 25 INSTALL NEW RISER INTO POLE MOUNTED CABINET   | 37 INSTALL CCTV WOOD POLE                                   | 49 REMOVE EXISTING COMMUNICATIONS CABLE   | 61 REMOVE EXISTING CCTV CAMERA ASSEMBLY                |
| 2 INSTALL LOW VOLTAGE POWER CABLE (24VAC)                        | 14 INSTALL HIGH DENSITY POLYETHYLENE CONDUIT                                      | 26 INSTALL DIGITAL VIDEO ENCODER   | 38 INSTALL STANDARD SIZE JUNCTION BOX                       | 50 INSTALL WIRELESS DSL   | 62 NEW CABINET ENTRANCE INTO NEW FOUNDATION            |
| 3 INSTALL CATEGORY 5E CABLE                                      | 15 DIRECTIONAL DRILL CONDUIT  | 27 INSTALL NEW ETHERNET EDGE SWITCH IN CABINET   | 39 INSTALL SPECIAL-SIZED JUNCTION BOX                       | 51 INSTALL CABLE STORAGE GUIDE(S) [SNOW SHOE(S)] AND STORE 100 FEET OF EACH CABLE | 63 DRILL /CORE DRILL EXISTING FOUNDATION               |
| 4 INSTALL SMFO CABLE   | 16 BORE AND JACK CONDUIT  | 28 INSTALL INTERCONNECT CENTER, PATCH PANEL, JUMPERS, AND FUSION SPLICE CABLE IN CABINET | 40 INSTALL OVER-SIZED JUNCTION BOX                          | 52 INSTALL DELINEATOR MARKER  | 64 INTERCEPT AND REROUTE EXISTING CONDUITS             |
| 5 NOT USED   | 17 INSTALL CABLE(S) IN EXISTING CONDUIT   | 29 INSTALL UNDERGROUND SPLICE ENCLOSURE  | 41 REMOVE EXISTING JUNCTION BOX                             | 53 STORE 50 FEET OF COMMUNICATIONS CABLE (EACH CABLE)                             | 65 BOND MESSENGER TO POLE GROUND                       |
| 6 INSTALL FIBER-OPTIC DROP CABLE                                 | 18 INSTALL CABLE(S) IN NEW CONDUIT  | 30 INSTALL AERIAL SPLICE ENCLOSURE   | 42 INSTALL WOOD POLE  | 54 LASH CABLE(S) TO EXISTING SIGNAL/COMMUNICATIONS CABLE                          | 66 BOND RISER TO POLE GROUND                           |
| 7 INSTALL TRACER WIRE  | 19 INSTALL CABLE(S) IN EXISTING RISER(S)  | 31 INSTALL SPLICE CABINET  | 43 REMOVE EXISTING WOOD POLE                                | 55 LASH CABLE(S) TO EXISTING MESSENGER CABLE                                      | 67 BOND TRACER WIRE TO EQUIPMENT GROUND BUS            |
| 8 INSTALL CONDUIT UNDERGROUND                                    | 20 INSTALL CABLE(S) IN NEW RISER(S)   | 32 MODIFY EXISTING SPLICE ENCLOSURE OR INTERCONNECT CENTER                               | 44 INSTALL AERIAL GUY ASSEMBLY                              | 56 LASH CABLE(S) TO NEW MESSENGER CABLE   | 68 INSTALL NEW COVER ON OVER-SIZED JUNCTION BOX        |
| 9 INSTALL PVC CONDUIT  | 21 INSTALL CABLE(S) IN EXISTING CABINET ENTRANCE                                  | 33 REMOVE EXISTING SPLICE /HUB /CCTV CABINET   | 45 INSTALL STANDARD GUY ASSEMBLY                            | 57 MODIFY EXISTING ELECTRICAL SERVICE FOR CCTV                                    | 69 INSTALL NEW BASE MOUNTED CCTV CABINET (336-A)       |
| 10 INSTALL RIGID, GALVANIZED STEEL CONDUIT                       | 22 INSTALL NEW CONDUIT INTO CABINET BASE (USE EX CABINET ENTRANCE WHEN AVAILABLE) | 34 INSTALL CABINET FOUNDATION  | 46 INSTALL SIDEWALK GUY ASSEMBLY                            | 58 INSTALL NEW ELECTRICAL SERVICE FOR CCTV  | 70 INSTALL NEW POLE MOUNTED CCTV CABINET (NEMA TYPE 4) |
| 11 INSTALL RIGID, GALVANIZED STEEL RISER WITH WEATHERHEAD        | 23 INSTALL NEW RISER INTO CABINET BASE (USE EX CABINET ENTRANCE WHEN AVAILABLE)   | 35 REMOVE EXISTING CABINET FOUNDATION  | 47 INSTALL MESSENGER CABLE                                  | 59 INSTALL NEW POLE MOUNTED CCTV CABINET (336)                                    | 71 HANDLASH AND INSTALL AERIAL CABLE PROTECTOR         |
| 12 INSTALL RIGID, GALVANIZED STEEL RISER WITH HEAT SHRINK TUBING | 24 INSTALL NEW CONDUIT INTO POLE MOUNTED CABINET                                  | 36 INSTALL CCTV CAMERA ASSEMBLY  | 48 REMOVE EXISTING COMMUNICATIONS CABLE AND MESSENGER CABLE | 60 INSTALL NEW BUILDING MOUNTED CCTV CABINET (336)                                |  |



**ATKINS** 1616 EAST MILLBROOK ROAD, SUITE 310  
 RALEIGH, NORTH CAROLINA 27609  
 (919) 876-6888 NCBEES #F-0326

Prepared for the Offices of:  
 TRANSPORTATION MOBILITY AND SAFETY DIVISION  
 NORTH CAROLINA DEPARTMENT OF TRANSPORTATION  
 TRANSPORTATION SYSTEMS GROUP

750 Greenfield Parkway, Garner, NC 27529

SCALE: 1"=50'

High Point Signal System  
 Cable Routing Plans

Division 7 Guilford County High Point

|                       |                      |
|-----------------------|----------------------|
| PLAN DATE: June 2015  | REVIEWED BY: MB Toth |
| PREPARED BY: JA Wiles | REVIEWED BY: LM Moon |

REVISIONS: INIT. DATE

Downloaded by: Melissa B. Toth 6/5/2015  
 PROFESSIONAL SEAL: MELISSA B. TOTH ENGINEER 025892  
 DATE

CADD File name: CL-274.dgn

05-JUN-2015 10:59  
 D:\projects\atkins\proj\c\cur\100037777 - High Point Sig. Sys\CL-274.dgn  
 WILE2054 AT DUS290140