

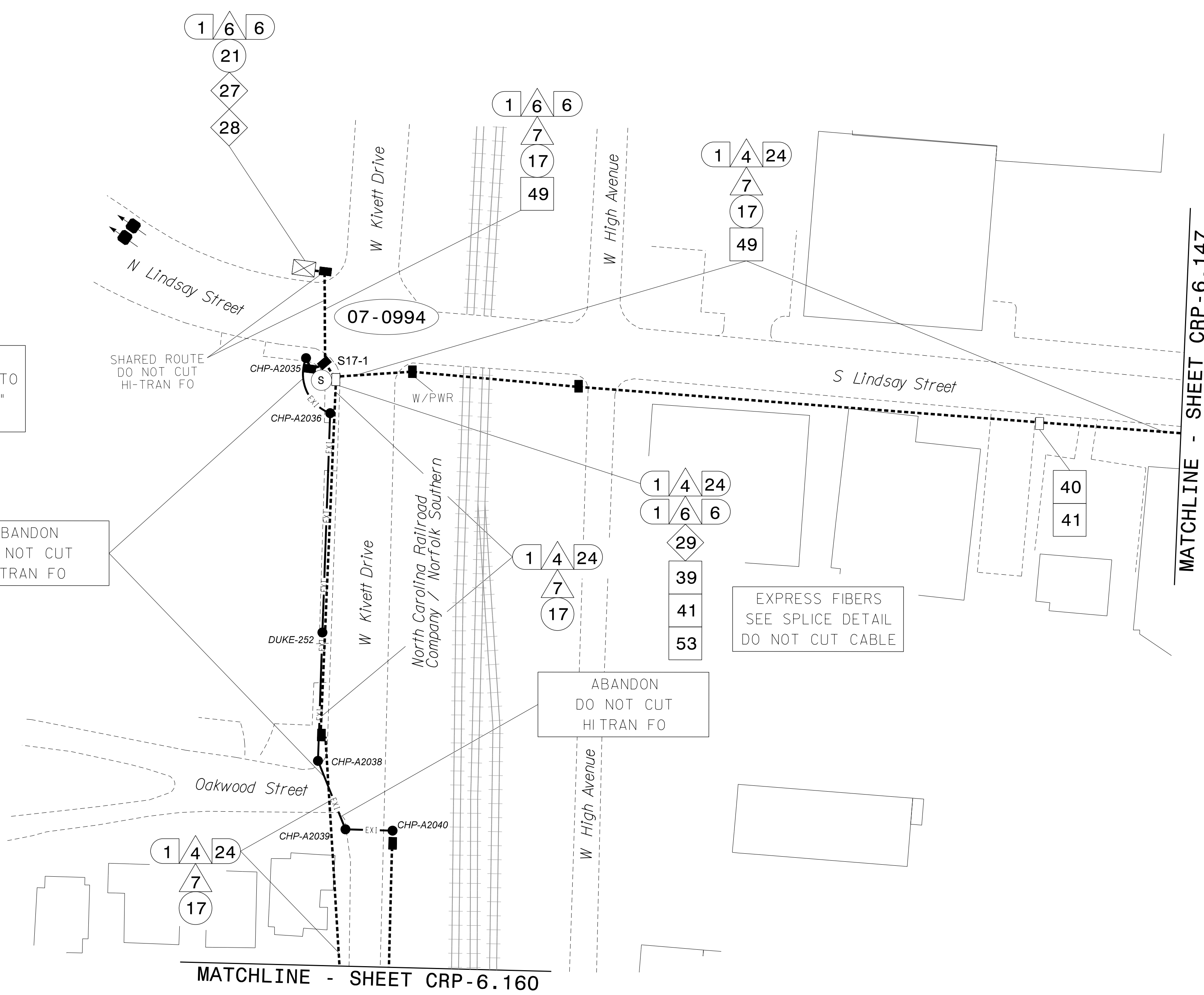
This area has been determined to contain properties with documented historic significance. If it is necessary to deviate from these plans in this area, alert the Engineer to contact Project Development and Environmental Analysis Branch - Historic Architecture Group of the North Carolina Department of Transportation for an effects determination before proceeding.

SEE SIGNAL PLAN FOR SYSTEM DETECTOR INSTALLATION/ASSIGNMENT DETAILS. REFER TO "SYSTEM DETECTORS AND CONTROL ZONES" SCHEMATIC FOR ADDITIONAL INFORMATION.

ABANDON DO NOT CUT HI TRAN FO

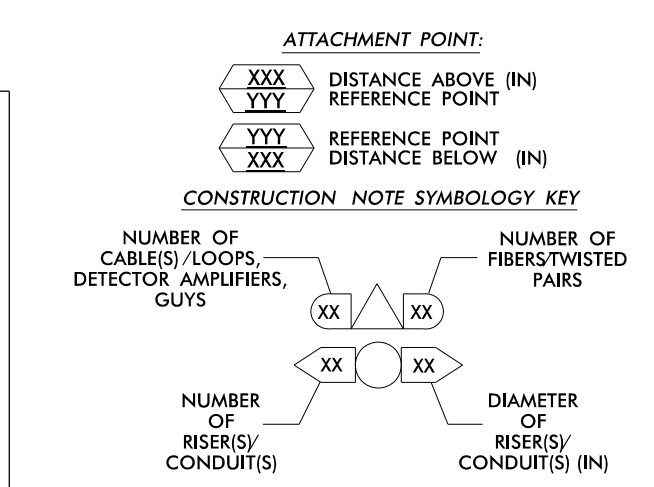
ABANDON DO NOT CUT HI TRAN FO

EXPRESS FIBERS SEE SPLICE DETAIL DO NOT CUT CABLE



- NOTES:  
1. UNLESS OTHERWISE NOTED:  
- OVERLASH NEW FIBER OPTIC CABLE TO EXISTING COMMUNICATIONS CABLE.  
- ATTACH NEW MESSENGER CABLE 40" BELOW POWER.  
- ATTACH ON FRONT SIDE (FS) OF POLE.  
2. SEAL ALL CONDUIT ENDS WITH DUCT AND CONDUIT SEALER, AT ALL JUNCTION BOX / CABINET ENTRANCES.

|    |   |    |  |    |   |    |  |    |  |    |   |
|----|---|----|--|----|---|----|--|----|--|----|---|
| 1  | INSTALL COMPOSITE CCTV CABLE                                  | 13 | INSTALL HEAT SHRINK TUBING RETROFIT KIT  | 25 | INSTALL NEW RISER INTO POLE MOUNTED CABINET   | 37 | INSTALL CCTV WOOD POLE                                   | 49 | REMOVE EXISTING COMMUNICATIONS CABLE   | 61 | REMOVE EXISTING CCTV CAMERA ASSEMBLY                |
| 2  | INSTALL LOW VOLTAGE POWER CABLE (24VAC)                       | 14 | INSTALL HIGH DENSITY POLYETHYLENE CONDUIT                                      | 26 | INSTALL DIGITAL VIDEO ENCODER   | 38 | INSTALL STANDARD SIZE JUNCTION BOX                       | 50 | INSTALL WIRELESS DSL   | 62 | NEW CABINET ENTRANCE INTO NEW FOUNDATION            |
| 3  | INSTALL CATEGORY 5E CABLE                                     | 15 | DIRECTIONAL DRILL CONDUIT  | 27 | INSTALL NEW ETHERNET EDGE SWITCH IN CABINET   | 39 | INSTALL SPECIAL-SIZED JUNCTION BOX                       | 51 | INSTALL CABLE STORAGE GUIDE(S) [SNOW SHOE(S)] AND STORE 100 FEET OF EACH CABLE | 63 | DRILL /CORE DRILL EXISTING FOUNDATION               |
| 4  | INSTALL SMFO CABLE  | 16 | BORE AND JACK CONDUIT  | 28 | INSTALL INTERCONNECT CENTER, PATCH PANEL, JUMPERS, AND FUSION SPLICE CABLE IN CABINET | 40 | INSTALL OVER-SIZED JUNCTION BOX                          | 52 | INSTALL DELINEATOR MARKER  | 64 | INTERCEPT AND REROUTE EXISTING CONDUITS             |
| 5  | NOT USED  | 17 | INSTALL CABLE(S) IN EXISTING CONDUIT   | 29 | INSTALL UNDERGROUND SPLICE ENCLOSURE  | 41 | REMOVE EXISTING JUNCTION BOX                             | 53 | STORE 50 FEET OF COMMUNICATIONS CABLE (EACH CABLE)                             | 65 | BOND MESSENGER TO POLE GROUND                       |
| 6  | INSTALL FIBER-OPTIC DROP CABLE                                | 18 | INSTALL CABLE(S) IN NEW CONDUIT  | 30 | INSTALL AERIAL SPLICE ENCLOSURE   | 42 | INSTALL WOOD POLE  | 54 | LASH CABLE(S) TO EXISTING SIGNAL/COMMUNICATIONS CABLE                          | 66 | BOND RISER TO POLE GROUND                           |
| 7  | INSTALL TRACER WIRE   | 19 | INSTALL CABLE(S) IN EXISTING RISER(S)  | 31 | INSTALL SPLICE CABINET  | 43 | REMOVE EXISTING WOOD POLE                                | 55 | LASH CABLE(S) TO EXISTING MESSENGER CABLE                                      | 67 | BOND TRACER WIRE TO EQUIPMENT GROUND BUS            |
| 8  | INSTALL CONDUIT UNDERGROUND                                   | 20 | INSTALL CABLE(S) IN NEW RISER(S)   | 32 | MODIFY EXISTING SPLICE ENCLOSURE OR INTERCONNECT CENTER                               | 44 | INSTALL AERIAL GUY ASSEMBLY                              | 56 | LASH CABLE(S) TO NEW MESSENGER CABLE   | 68 | INSTALL NEW COVER ON OVER-SIZED JUNCTION BOX        |
| 9  | INSTALL PVC CONDUIT   | 21 | INSTALL CABLE(S) IN EXISTING CABINET ENTRANCE                                  | 33 | REMOVE EXISTING SPLICE /HUB /CCTV CABINET   | 45 | INSTALL STANDARD GUY ASSEMBLY                            | 57 | MODIFY EXISTING ELECTRICAL SERVICE FOR CCTV                                    | 69 | INSTALL NEW BASE MOUNTED CCTV CABINET (336-A)       |
| 10 | INSTALL RIGID, GALVANIZED STEEL CONDUIT                       | 22 | INSTALL NEW CONDUIT INTO CABINET BASE (USE EX CABINET ENTRANCE WHEN AVAILABLE) | 34 | INSTALL CABINET FOUNDATION  | 46 | INSTALL SIDEWALK GUY ASSEMBLY                            | 58 | INSTALL NEW ELECTRICAL SERVICE FOR CCTV  | 70 | INSTALL NEW POLE MOUNTED CCTV CABINET (NEMA TYPE 4) |
| 11 | INSTALL RIGID, GALVANIZED STEEL RISER WITH WEATHERHEAD        | 23 | INSTALL NEW RISER INTO CABINET BASE (USE EX CABINET ENTRANCE WHEN AVAILABLE)   | 35 | REMOVE EXISTING CABINET FOUNDATION  | 47 | INSTALL MESSENGER CABLE                                  | 59 | INSTALL NEW POLE MOUNTED CCTV CABINET (336)                                    | 71 | HANDLASH AND INSTALL AERIAL CABLE PROTECTOR         |
| 12 | INSTALL RIGID, GALVANIZED STEEL RISER WITH HEAT SHRINK TUBING | 24 | INSTALL NEW CONDUIT INTO POLE MOUNTED CABINET                                  | 36 | INSTALL CCTV CAMERA ASSEMBLY  | 48 | REMOVE EXISTING COMMUNICATIONS CABLE AND MESSENGER CABLE | 60 | INSTALL NEW BUILDING MOUNTED CCTV CABINET (336)                                |    |   |



ATKINS 1616 EAST MILLBROOK ROAD, SUITE 310 RALEIGH, NORTH CAROLINA 27609 (919) 876-6888 NCBEES #F-0326

High Point Signal System Cable Routing Plans  
Division 7 Guilford County High Point  
PLAN DATE: June 2015 REVIEWED BY: MB Toth  
PREPARED BY: IW BERDEAU REVIEWED BY: LM Moon  
SCALE: 1"=50'  
Designed by: Melissa B. Toth 6/5/2015  
CADD Filename: CL-161.dgn

05-JUN-2015 10:54  
D:\projects\atkins\proj\c\cur\100037777 - High Point Sig\_Sys\CL-161.dgn  
WILE2054 AT DUS290140