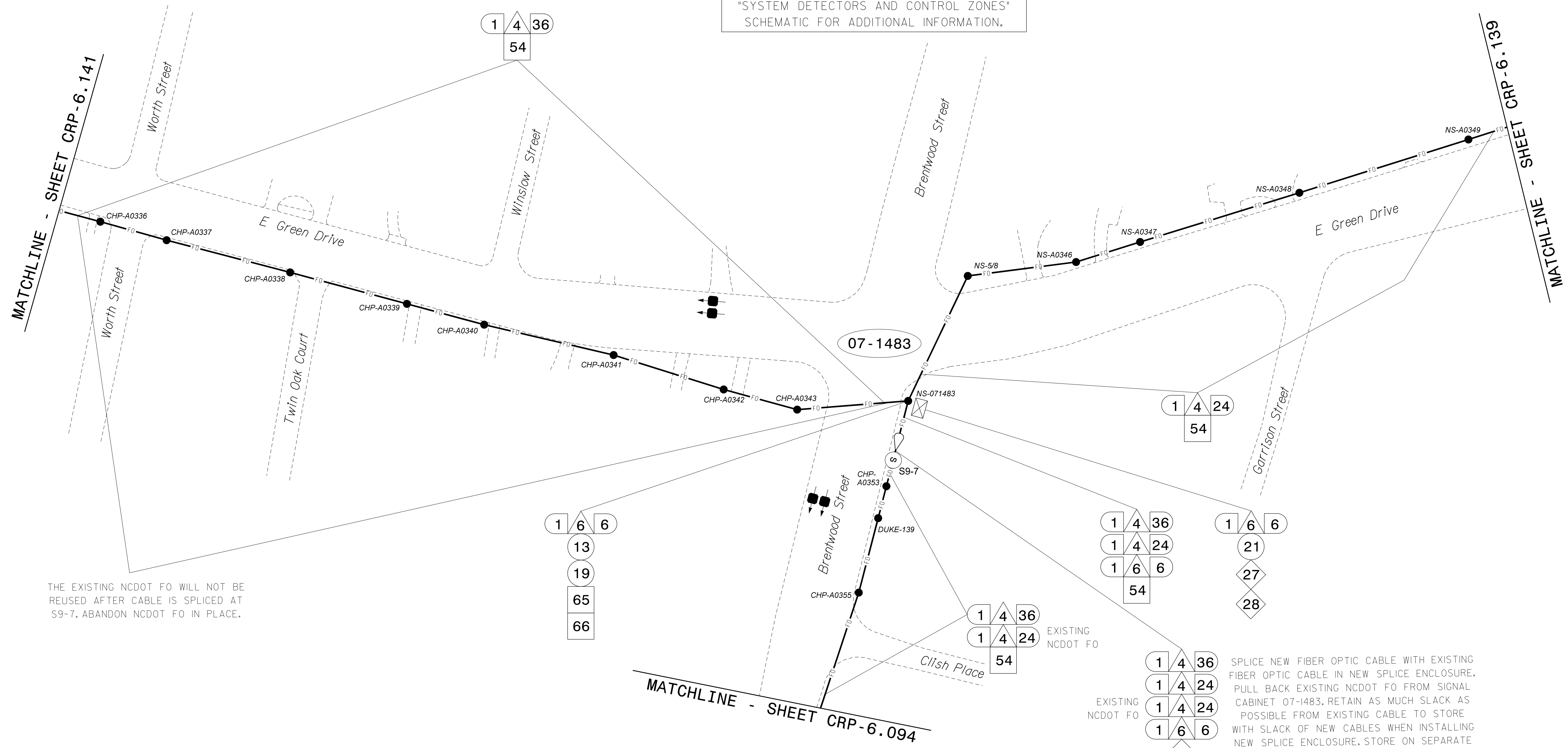


SEE SIGNAL PLAN FOR SYSTEM DETECTOR INSTALLATION/ASSIGNMENT DETAILS. REFER TO "SYSTEM DETECTORS AND CONTROL ZONES" SCHEMATIC FOR ADDITIONAL INFORMATION.



THE EXISTING NCDOT FO WILL NOT BE REUSED AFTER CABLE IS SPLICED AT S9-7. ABANDON NCDOT FO IN PLACE.

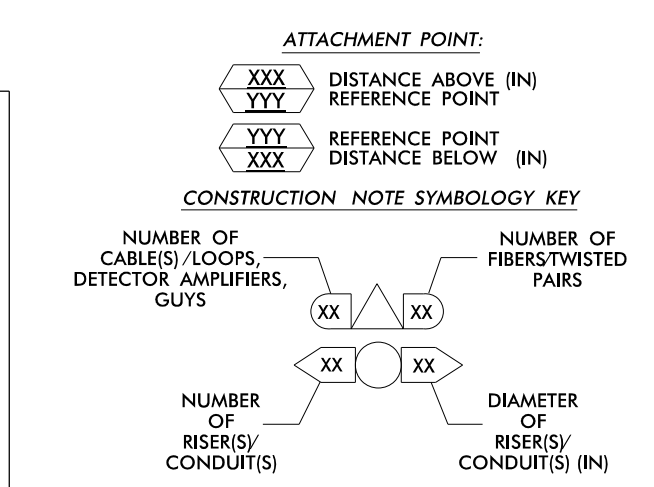
EXPRESS FIBERS SEE SPLICE DETAIL DO NOT CUT CABLE

SPLICE NEW FIBER OPTIC CABLE WITH EXISTING FIBER OPTIC CABLE IN NEW SPLICE ENCLOSURE. PULL BACK EXISTING NCDOT FO FROM SIGNAL CABINET 07-1483. RETAIN AS MUCH SLACK AS POSSIBLE FROM EXISTING CABLE TO STORE WITH SLACK OF NEW CABLES WHEN INSTALLING NEW SPLICE ENCLOSURE. STORE ON SEPARATE STORAGE RACKS IF LESS THAN 100' OF SPARE IS AVAILABLE.

NOTES:

- 1. UNLESS OTHERWISE NOTED:
- OVERLASH NEW FIBER OPTIC CABLE TO EXISTING COMMUNICATIONS CABLE.
- ATTACH NEW MESSENGER CABLE 40" BELOW POWER.
- ATTACH ON FRONT SIDE (FS) OF POLE.
2. SEAL ALL CONDUIT ENDS WITH DUCT AND CONDUIT SEALER, AT ALL JUNCTION BOX / CABINET ENTRANCES.

Table with 7 columns and 12 rows of callout numbers and descriptions for various cable and equipment installation tasks.



ATKINS 1616 EAST WILLBROOK ROAD, SUITE 310 RALEIGH, NORTH CAROLINA 27609 (919) 876-6888 NCBEEES #F-0326

Project information block including the title 'High Point Signal System Cable Routing Plans', division details, dates, and professional seals for Melissa B. Toth.

05-JUN-2015 10:53 D:\projects\atkins\proj\crp\crp-6\crp-6.140.dgn