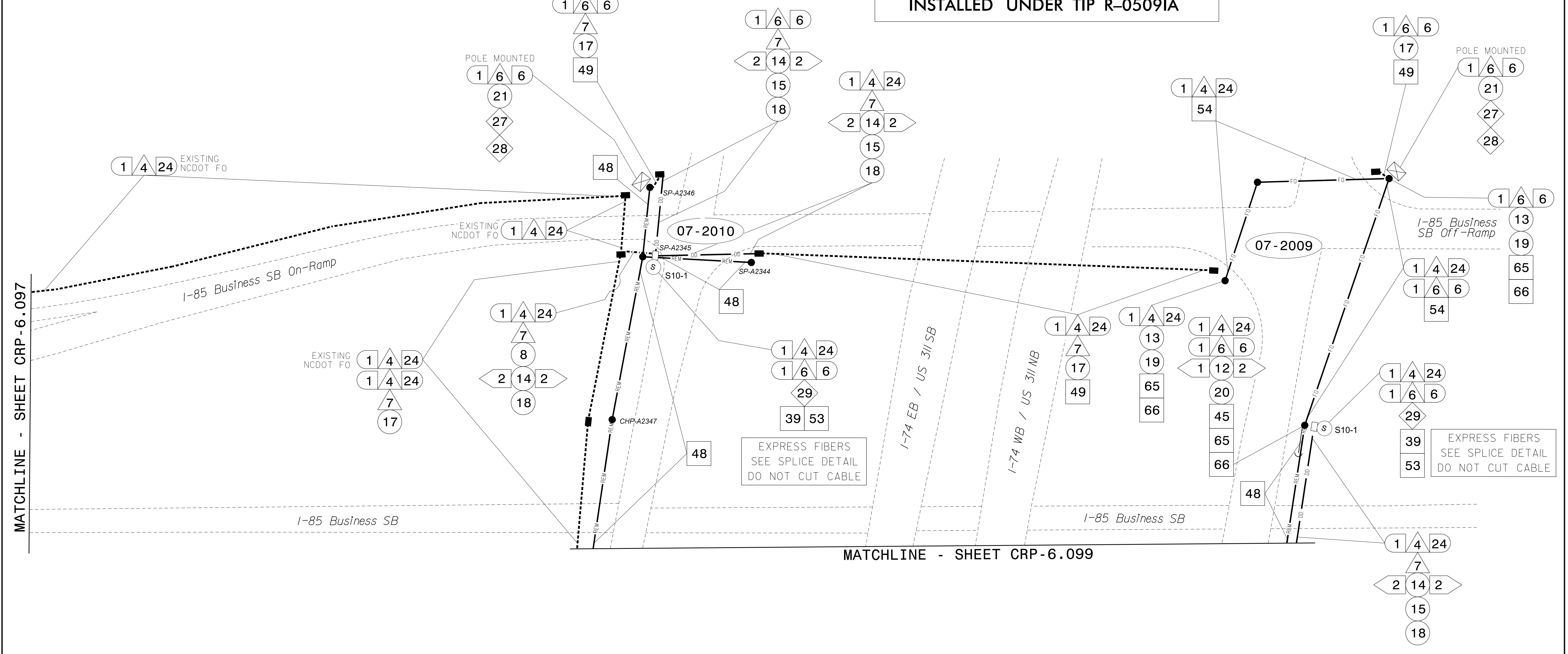


FIBER ALONG US 311 / I-74 BETWEEN I-85 BUS AND I-85 PREVIOUSLY INSTALLED UNDER TIP R-05091A



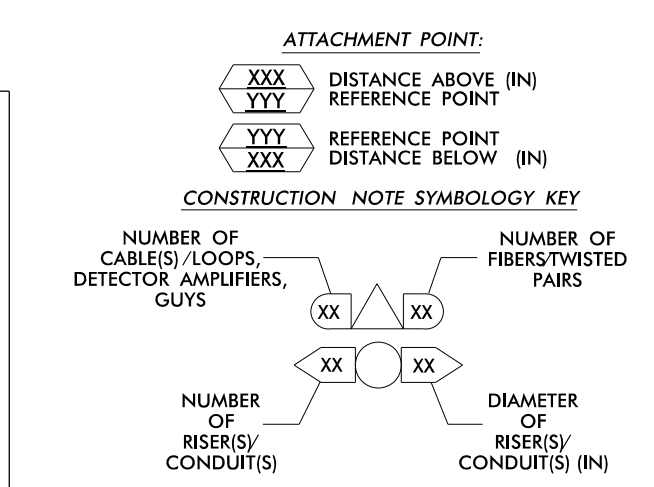
MATCHLINE - SHEET CRP-6.097

MATCHLINE - SHEET CRP-6.099

NOTES:

- 1. UNLESS OTHERWISE NOTED: - OVERLASH NEW FIBER OPTIC CABLE TO EXISTING COMMUNICATIONS CABLE. - ATTACH NEW MESSENGER CABLE 40" BELOW POWER. - ATTACH ON FRONT SIDE (FS) OF POLE. 2. SEAL ALL CONDUIT ENDS WITH DUCT AND CONDUIT SEALER, AT ALL JUNCTION BOX / CABINET ENTRANCES.

Legend table with 72 numbered items describing cable types, conduit, cabinets, and installation instructions.



ATKINS 1616 EAST MILLBROOK ROAD, SUITE 310 RALEIGH, NORTH CAROLINA 27609 (919) 876-6888 NCBEES #F-0326

Project information block including 'High Point Signal System Cable Routing Plans', dates, names, and logos.

05-JUN-2015 10:52 D:\projects\atkins\proj\c\crp\100037777 - High Point Sig_Sys\CL-098.dgn AT_DUS290140