

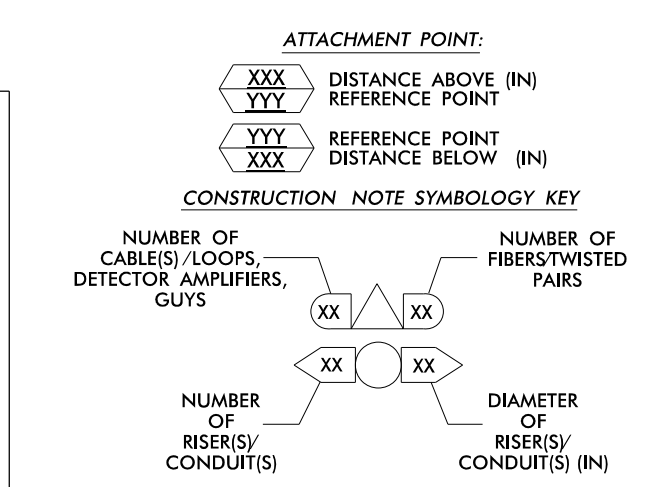
**NOTES:**  
 1. UNLESS OTHERWISE NOTED:  
 - OVERLASH NEW FIBER OPTIC CABLE TO EXISTING COMMUNICATIONS CABLE.  
 - ATTACH NEW MESSENGER CABLE 40" BELOW POWER.  
 - ATTACH ON FRONT SIDE (FS) OF POLE.  
 2. SEAL ALL CONDUIT ENDS WITH DUCT AND CONDUIT SEALER, AT ALL JUNCTION BOX /CABINET ENTRANCES.

EXPRESS FIBERS  
SEE SPlice DETAIL  
DO NOT CUT CABLE

EXPRESS FIBERS  
SEE SPlice DETAIL  
DO NOT CUT CABLE

SEE SIGNAL PLAN FOR SYSTEM DETECTOR  
INSTALLATION/ASSIGNMENT DETAILS. REFER TO  
"SYSTEM DETECTORS AND CONTROL ZONES"  
SCHEMATIC FOR ADDITIONAL INFORMATION.

1. INSTALL COMPOSITE CCTV CABLE	13. INSTALL HEAT SHRINK TUBING RETROFIT KIT	25. INSTALL NEW RISER INTO POLE MOUNTED CABINET	37. INSTALL CCTV WOOD POLE
2. INSTALL LOW VOLTAGE POWER CABLE (24VAC)	14. INSTALL HIGH DENSITY POLYETHYLENE CONDUIT	26. INSTALL DIGITAL VIDEO ENCODER	38. INSTALL STANDARD SIZE JUNCTION BOX
3. INSTALL CATEGORY 5E CABLE	15. DIRECTIONAL DRILL CONDUIT	27. INSTALL NEW ETHERNET EDGE SWITCH IN CABINET	39. INSTALL SPECIAL-SIZED JUNCTION BOX
4. INSTALL SMFO CABLE	16. BORE AND JACK CONDUIT	28. INSTALL INTERCONNECT CENTER, PATCH PANEL, JUMPERS, AND FUSION SPLICE CABLE IN CABINET	40. INSTALL OVER-SIZED JUNCTION BOX
5. NOT USED	17. INSTALL CABLE(S) IN EXISTING CONDUIT	29. INSTALL UNDERGROUND SPLICE ENCLOSURE	41. REMOVE EXISTING JUNCTION BOX
6. INSTALL FIBER-OPTIC DROP CABLE	18. INSTALL CABLE(S) IN NEW CONDUIT	30. INSTALL AERIAL SPLICE ENCLOSURE	42. INSTALL WOOD POLE
7. INSTALL TRACER WIRE	19. INSTALL CABLE(S) IN EXISTING RISER(S)	31. INSTALL SPLICE CABINET	43. REMOVE EXISTING WOOD POLE
8. INSTALL CONDUIT UNDERGROUND	20. INSTALL CABLE(S) IN NEW RISER(S)	32. MODIFY EXISTING SPLICE ENCLOSURE OR INTERCONNECT CENTER	44. INSTALL AERIAL GUY ASSEMBLY
9. INSTALL PVC CONDUIT	21. INSTALL CABLE(S) IN EXISTING CABINET ENTRANCE	33. REMOVE EXISTING SPLICE /HUB /CCTV CABINET	45. INSTALL STANDARD GUY ASSEMBLY
10. INSTALL RIGID, GALVANIZED STEEL CONDUIT	22. INSTALL NEW CONDUIT INTO CABINET BASE (USE EX CABINET ENTRANCE WHEN AVAILABLE)	34. INSTALL CABINET FOUNDATION	46. INSTALL SIDEWALK GUY ASSEMBLY
11. INSTALL RIGID, GALVANIZED STEEL RISER WITH WEATHERHEAD	23. INSTALL NEW RISER INTO CABINET BASE (USE EX CABINET ENTRANCE WHEN AVAILABLE)	35. REMOVE EXISTING CABINET FOUNDATION	47. INSTALL MESSENGER CABLE
12. INSTALL RIGID, GALVANIZED STEEL RISER WITH HEAT SHRINK TUBING	24. INSTALL NEW CONDUIT INTO POLE MOUNTED CABINET	36. INSTALL CCTV CAMERA ASSEMBLY	48. REMOVE EXISTING COMMUNICATIONS CABLE AND MESSENGER CABLE
			49. REMOVE EXISTING COMMUNICATIONS CABLE
			50. INSTALL WIRELESS DSL
			51. INSTALL CABLE STORAGE GUIDE(S) [SNOW SHOE(S)] AND STORE 100 FEET OF EACH CABLE
			52. INSTALL DELINEATOR MARKER
			53. STORE 50 FEET OF COMMUNICATIONS CABLE (EACH CABLE)
			54. LASH CABLE(S) TO EXISTING SIGNAL/COMMUNICATIONS CABLE
			55. LASH CABLE(S) TO EXISTING MESSENGER CABLE
			56. LASH CABLE(S) TO NEW MESSENGER CABLE
			57. MODIFY EXISTING ELECTRICAL SERVICE FOR CCTV
			58. INSTALL NEW ELECTRICAL SERVICE FOR CCTV
			59. INSTALL NEW POLE MOUNTED CCTV CABINET (336)
			60. INSTALL NEW BUILDING MOUNTED CCTV CABINET (336)
			61. REMOVE EXISTING CCTV CAMERA ASSEMBLY
			62. NEW CABINET ENTRANCE INTO NEW FOUNDATION
			63. DRILL /CORE DRILL EXISTING FOUNDATION
			64. INTERCEPT AND REROUTE EXISTING CONDUITS
			65. BOND MESSENGER TO POLE GROUND
			66. BOND RISER TO POLE GROUND
			67. BOND TRACER WIRE TO EQUIPMENT GROUND BUS
			68. INSTALL NEW COVER ON OVER-SIZED JUNCTION BOX
			69. INSTALL NEW BASE MOUNTED CCTV CABINET (336-A)
			70. INSTALL NEW POLE MOUNTED CCTV CABINET (NEMA TYPE 4)
			71. HANDLASH AND INSTALL AERIAL CABLE PROTECTOR



**ATKINS** 1616 EAST MILLBROOK ROAD, SUITE 310  
 RALEIGH, NORTH CAROLINA 27609  
 (919) 876-6888 NCBEES #F-0326

Prepared for the Offices of:  
 Transportation Mobility and Safety Division  
 NORTH CAROLINA DEPARTMENT OF TRANSPORTATION  
 Transportation System Solutions  
 750 Greenfield Parkway, Garner, NC 27529

**High Point Signal System**  
 Cable Routing Plans

Division 7 Guilford County High Point  
 PLAN DATE: June 2015 REVIEWED BY: MB Toth  
 PREPARED BY: IW BERDEAU REVIEWED BY: LM Moon

SCALE: 1"=50'

DocuSigned by:  
 Melissa B. Toth 6/5/2015  
 CADW File name: CL-034.dgn

05-JUN-2015 10:50  
 D:\projects\highpoint\proj\c\cur\100037777 - High Point Sig\_Sys\CL-034.dgn  
 WILE2054 AT DUS290140