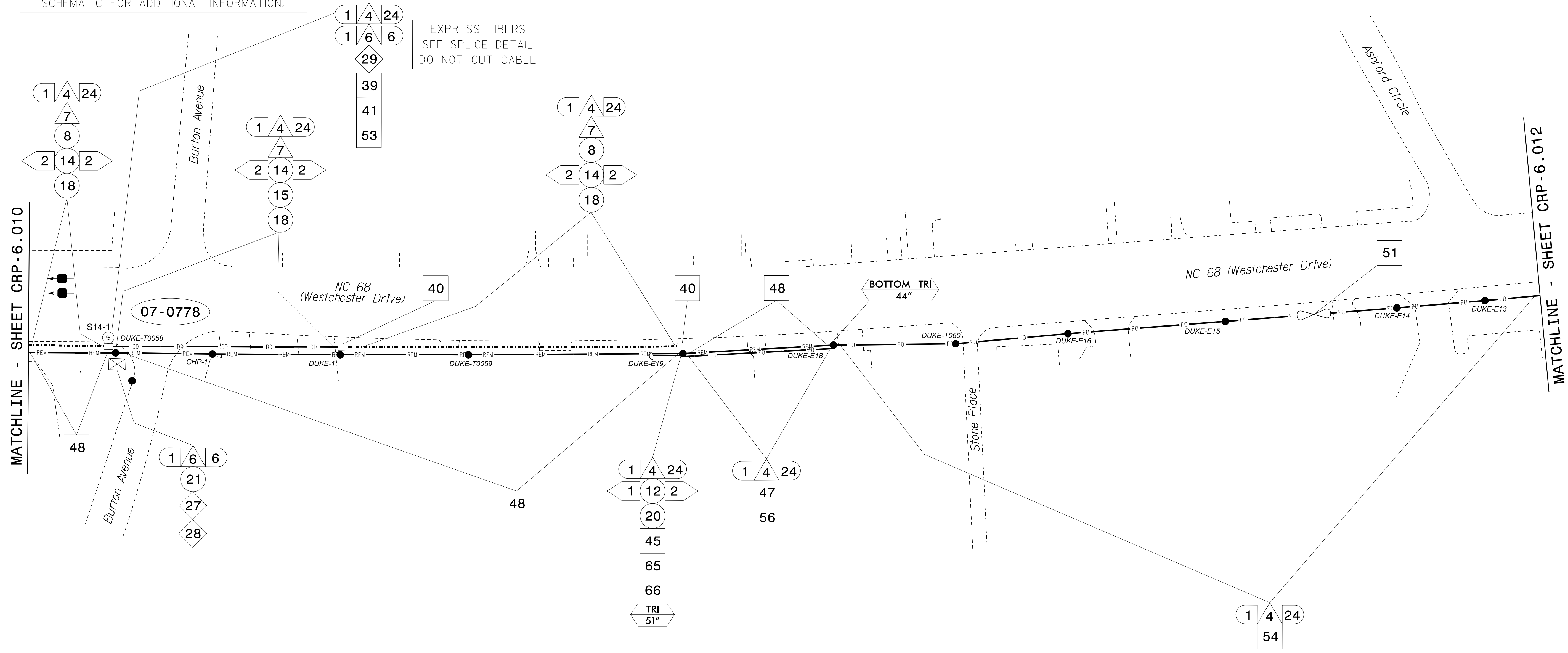


SEE SIGNAL PLAN FOR SYSTEM DETECTOR INSTALLATION/ASSIGNMENT DETAILS. REFER TO "SYSTEM DETECTORS AND CONTROL ZONES" SCHEMATIC FOR ADDITIONAL INFORMATION.

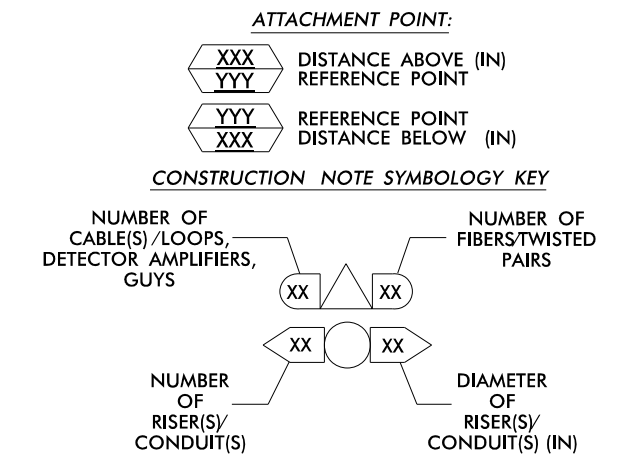
EXPRESS FIBERS SEE SPLICE DETAIL DO NOT CUT CABLE



NOTES:

- 1. UNLESS OTHERWISE NOTED:
- OVERLASH NEW FIBER OPTIC CABLE TO EXISTING COMMUNICATIONS CABLE.
- ATTACH NEW MESSENGER CABLE 40" BELOW POWER.
- ATTACH ON FRONT SIDE (FS) OF POLE.
2. SEAL ALL CONDUIT ENDS WITH DUCT AND CONDUIT SEALER, AT ALL JUNCTION BOX / CABINET ENTRANCES.

Table with 7 columns and 24 rows of numbered callouts (1-71) and their corresponding descriptions for cable installation and equipment setup.



ATKINS 1616 EAST MILLBROOK ROAD, SUITE 310 RALEIGH, NORTH CAROLINA 27609 (919) 876-6888 NCBEEES #F-0326

Project information block including title 'High Point Signal System Cable Routing Plans', division 'Division 7', date 'June 2015', and professional seal of Melissa B. Toth.

05-JUN-2015 10:50 D:\projects\hpt\hpt\proj\c\crp\100037777 - High Point Sig\_Sys\CL-011.dgn AT: DUS290140 WILE2054