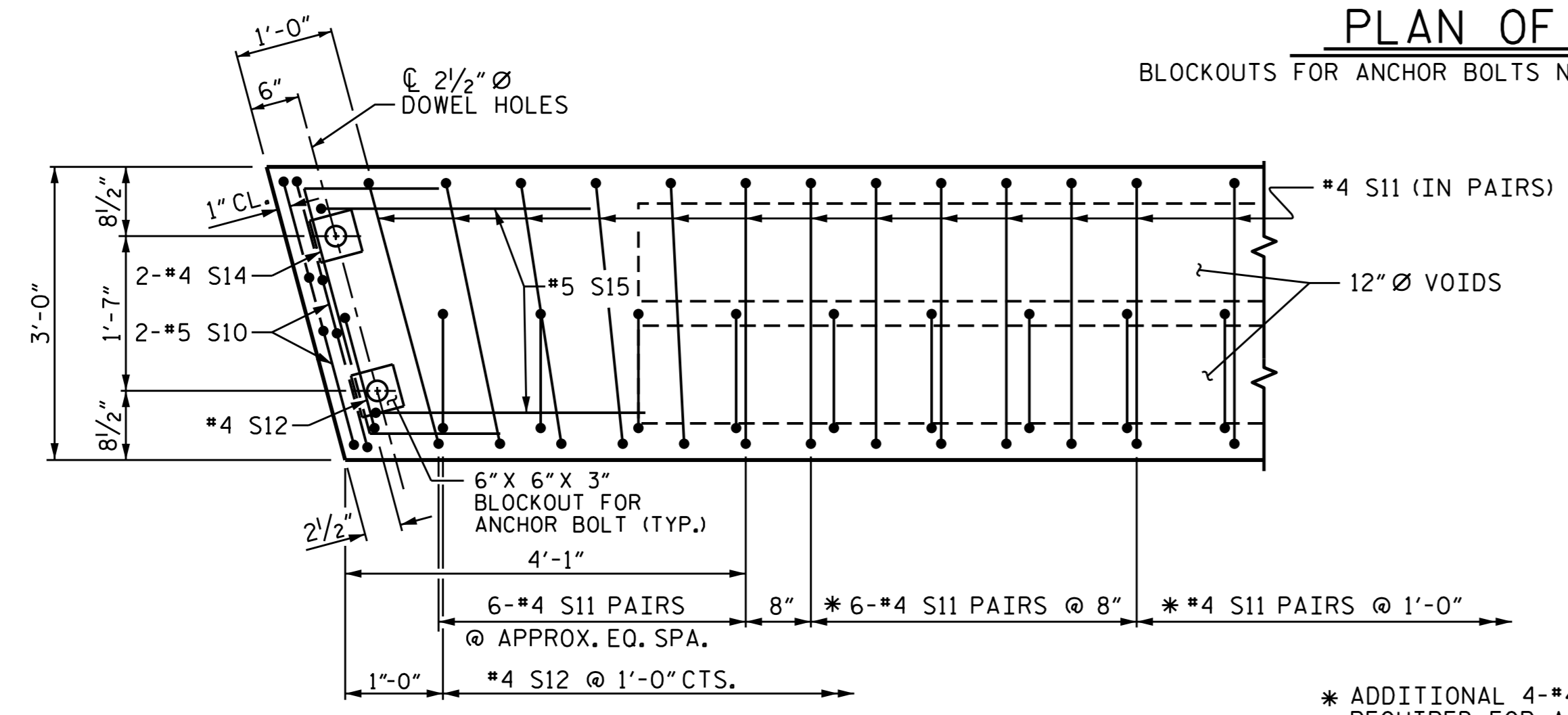


DETAIL "C"
 #4 S11 BARS MAY BE SHIFTED AS NECESSARY TO MAINTAIN 1" CLEAR TO GROUDED RECESS AND 2 1/2" Ø TRANSVERSE POST-TENSIONING STRAND HOLES

PLAN OF UNIT

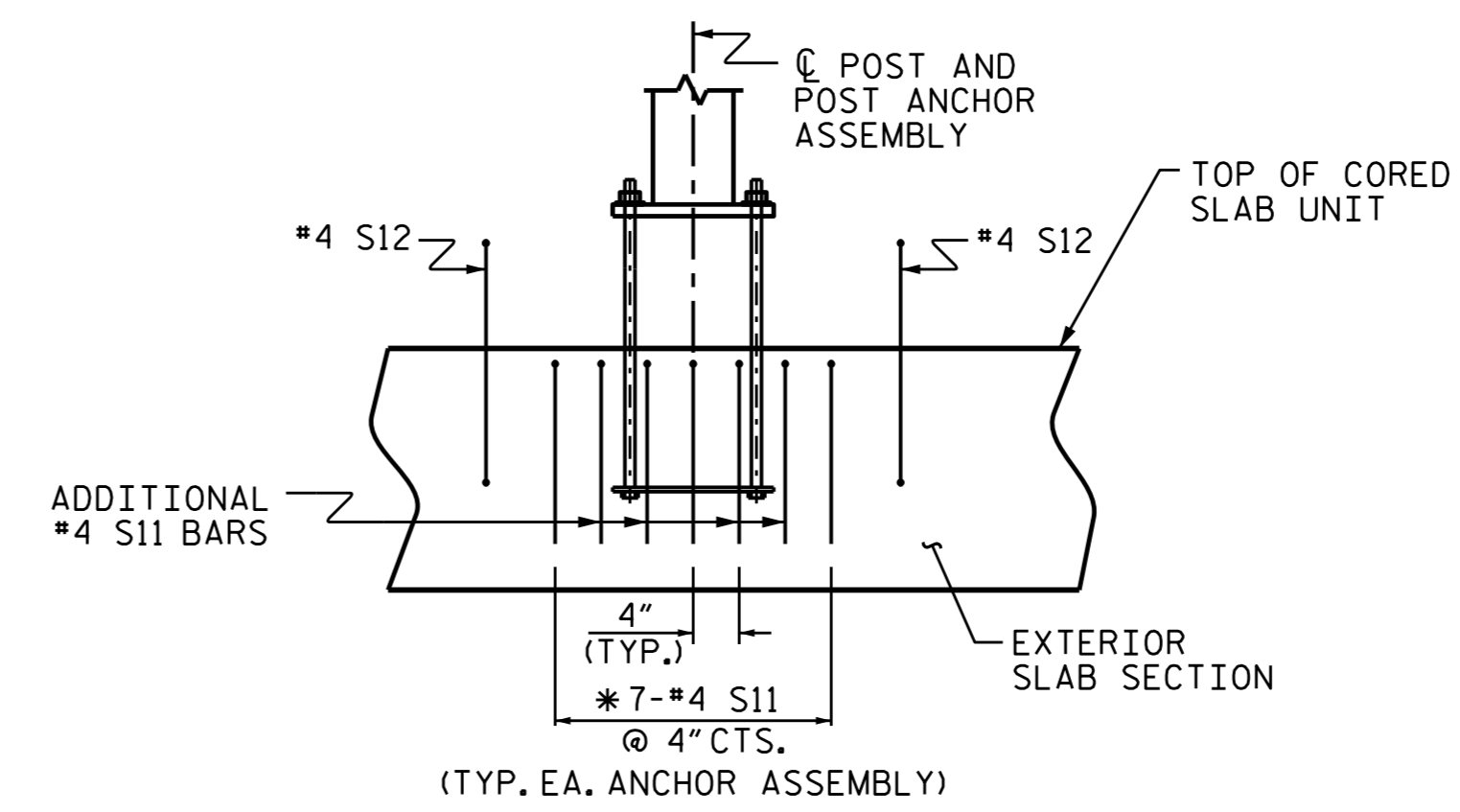
BLOCKOUTS FOR ANCHOR BOLTS NOT SHOWN FOR CLARITY.



DETAIL "B"

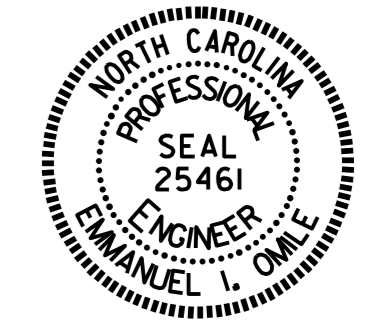
EXTERIOR UNIT SHOWN - INTERIOR UNIT SIMILAR EXCEPT OMIT #4 S12 BARS.

* ADDITIONAL 4-#4 S11 (TOP ONLY) REQUIRED FOR A TOTAL OF 7-#4 S11 SPACED @ 4" AT POST ASSEMBLY LOCATION. (FOR LOCATION OF RAIL POST SEE SHEET S-13)



SIDE VIEW AT POST LOCATION

(SHOWING ADDITIONAL S11 BARS AT EACH POST ASSEMBLY)



DocuSigned by: *E. Omile* 9/3/2015
 000110228E1B425

PROJECT NO. B-4959
GUILFORD COUNTY
 STATION: 14+70.50 -L-

SHEET 4 OF 6

STATE OF NORTH CAROLINA DEPARTMENT OF TRANSPORTATION RALEIGH						SHEET NO. S-9
PLAN OF 70' UNIT 32'-6" CLEAR ROADWAY 75° SKEW SPAN B						TOTAL SHEETS 25
REVISIONS						
NO.	BY:	DATE:	NO.	BY:	DATE:	
1			3			
2			4			

ASSEMBLED BY : E.I. OMILE	DATE : 3-17-15
CHECKED BY : T.H. FANG	DATE : 4/24/15
DRAWN BY : MAA 6/10	REV. 12/5/11 MAA/AAC
CHECKED BY : MKT 7/10	