

5/28/99

PROJECT REFERENCE NO. B-4959	SHEET NO. 5
ROADWAY DESIGN ENGINEER JAMES A. SPUR SEAL 014571 EXPIRES 7/23/2015	HYDRAULICS ENGINEER RICHARD L. HINER SEAL 29185 EXPIRES 7/23/2015

DITCH LEGEND

LEFT DITCH - - - - -

RIGHT DITCH - - - - -

☉ STA. 14 + 70.50
ELEV. = 641.87
SKEW = 75 DEGREES
1@36.23'(21"), 1@70.13'(24"), 1@36.23'(21") SPANS
21" & 24" CORED SLAB BRIDGE, 4' CAPS
(W/Alaska Rail)

BM #2
RR SPIKE IN 20" SWEET GUM
102.63' LEFT OF -L- STA. 14 + 64.16
ELEV = 637.90'

BEGIN GRADE
-L- STA. 12 + 00.00
EL = 642.01'

PI = 13 + 12.00
EL = 642.35'
VC = 90'
K = 150
55 MPH

PI = 17 + 10.00
EL = 641.15'
VC = 308'
K = 79
45 MPH

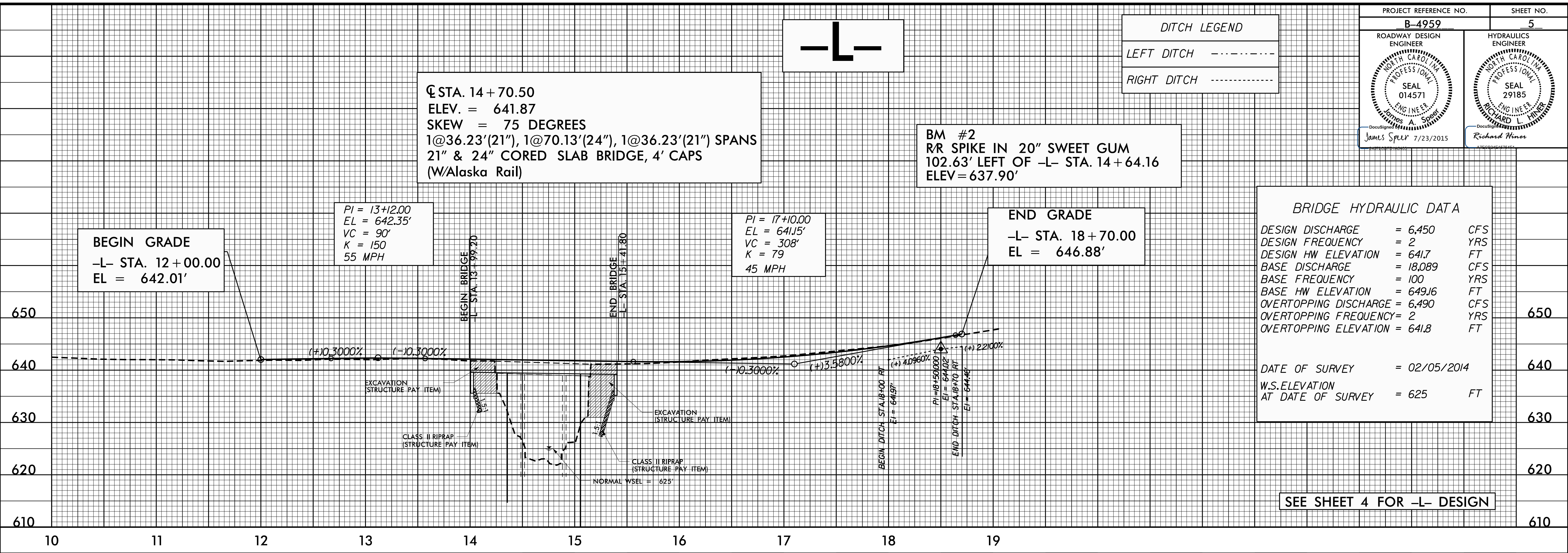
END GRADE
-L- STA. 18 + 70.00
EL = 646.88'

BRIDGE HYDRAULIC DATA

DESIGN DISCHARGE	= 6,450	CFS
DESIGN FREQUENCY	= 2	YRS
DESIGN HW ELEVATION	= 641.7	FT
BASE DISCHARGE	= 18,089	CFS
BASE FREQUENCY	= 100	YRS
BASE HW ELEVATION	= 649.16	FT
OVERTOPPING DISCHARGE	= 6,490	CFS
OVERTOPPING FREQUENCY	= 2	YRS
OVERTOPPING ELEVATION	= 641.8	FT

DATE OF SURVEY = 02/05/2014

W.S. ELEVATION AT DATE OF SURVEY = 625 FT



SEE SHEET 4 FOR -L- DESIGN

-Y-

DITCH LEGEND

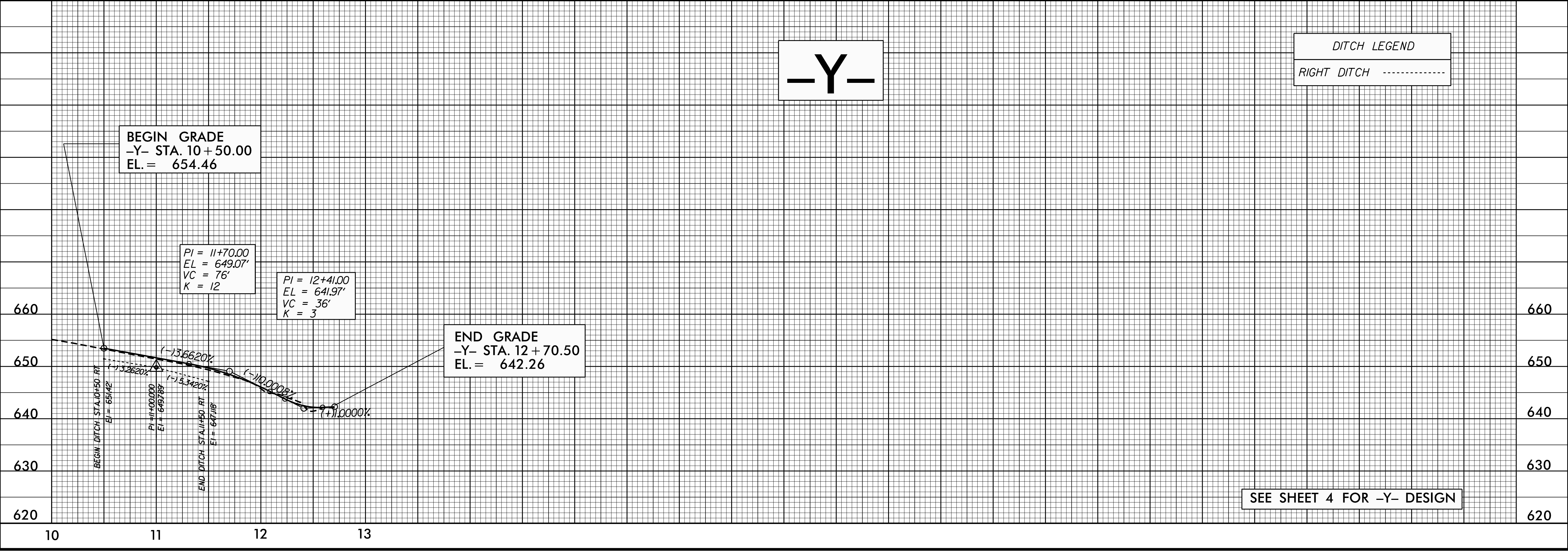
RIGHT DITCH - - - - -

BEGIN GRADE
-Y- STA. 10 + 50.00
EL = 654.46

PI = 11 + 70.00
EL = 649.07'
VC = 76'
K = 12

PI = 12 + 41.00
EL = 641.97'
VC = 36'
K = 3

END GRADE
-Y- STA. 12 + 70.50
EL = 642.26



SEE SHEET 4 FOR -Y- DESIGN

22 JUL 2015 4:13 PM B:\4959\99_Rdy_p1.dgn