

**This electronic collection of documents is provided
for the convenience of the user
and is Not a Certified Document –**

**The documents contained herein were originally issued
and sealed by the individuals whose names and license
numbers appear on each page, on the dates appearing
with their signature on that page.**

**This file or an individual page
shall not be considered a certified document.**

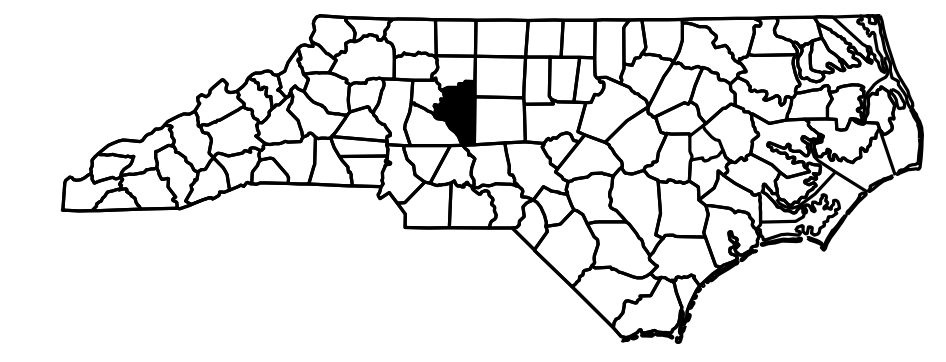
T.I.P. NO.	SHEET NO.
B-3159	UO-01

STATE OF NORTH CAROLINA
DIVISION OF HIGHWAYS

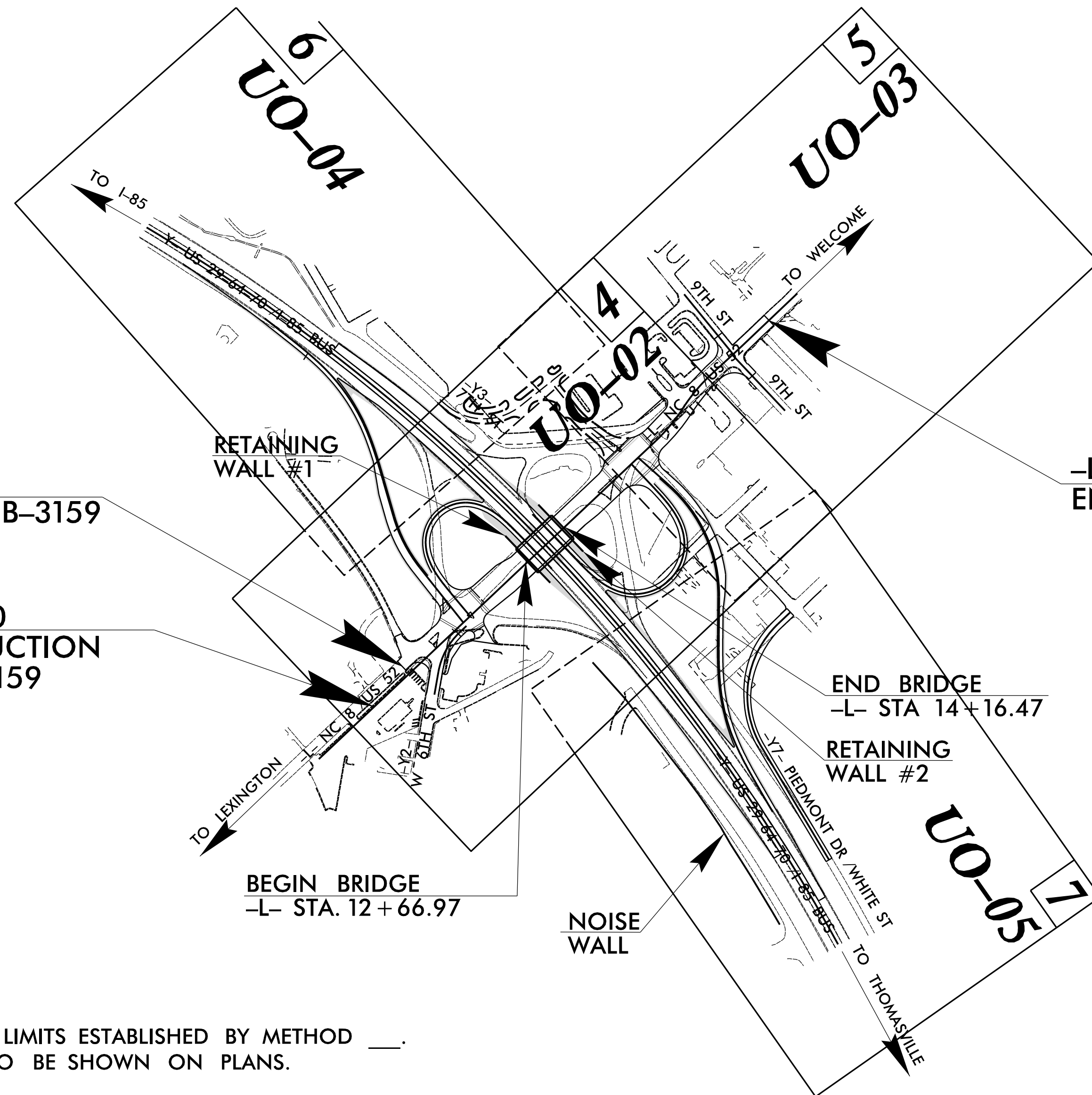
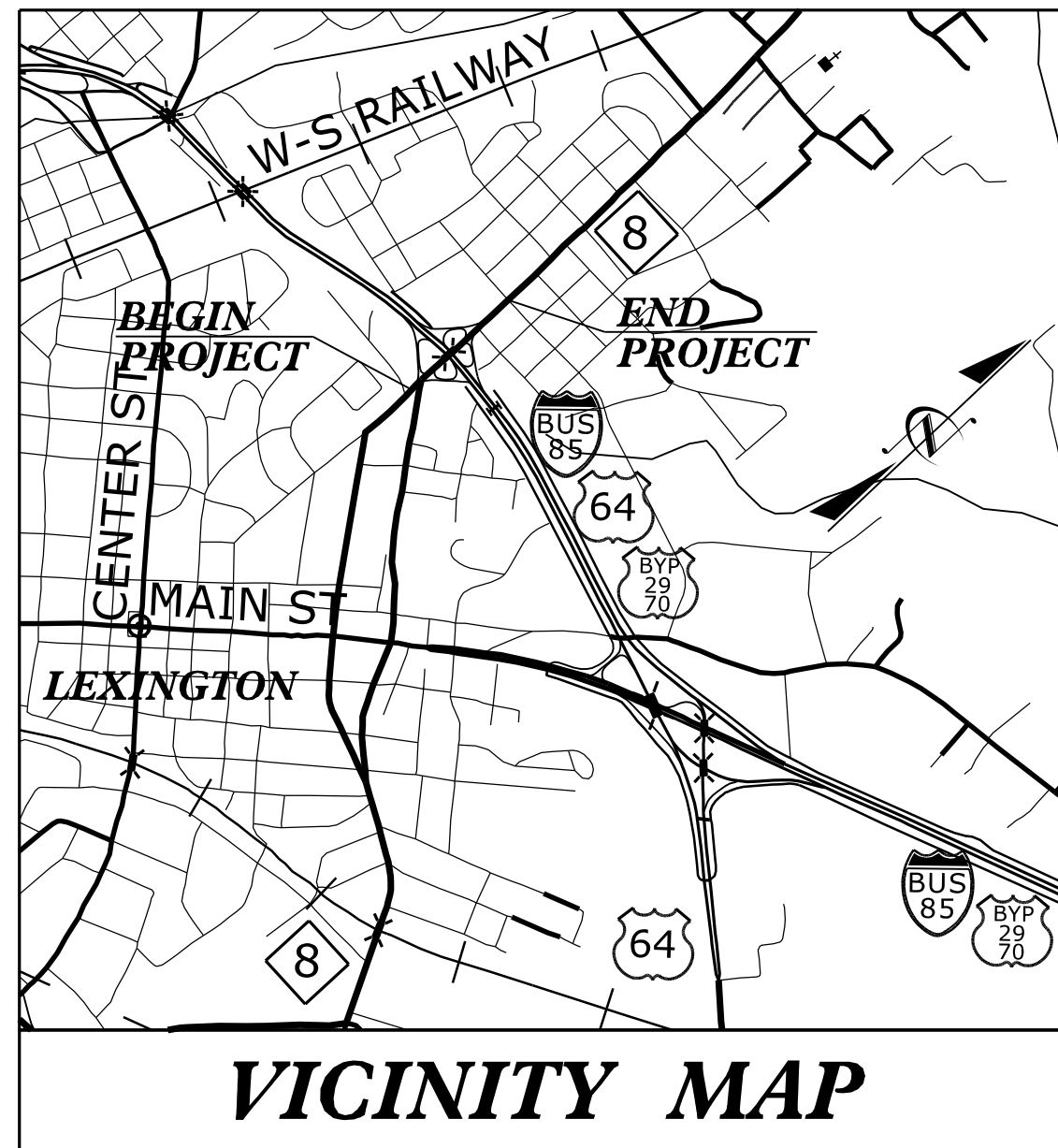
DAVIDSON COUNTY

LOCATION: BRIDGE NO. 27 OVER US 29-64-70 / I-85 BUS
ON NC 8 / US 52

UTILITIES BY OTHERS



TIP PROJECT: B-3159



-L- STA. 7+75.00
BEGIN TIP PROJECT B-3159

-L- STA. 23+00.00
END TIP PROJECT B-3159

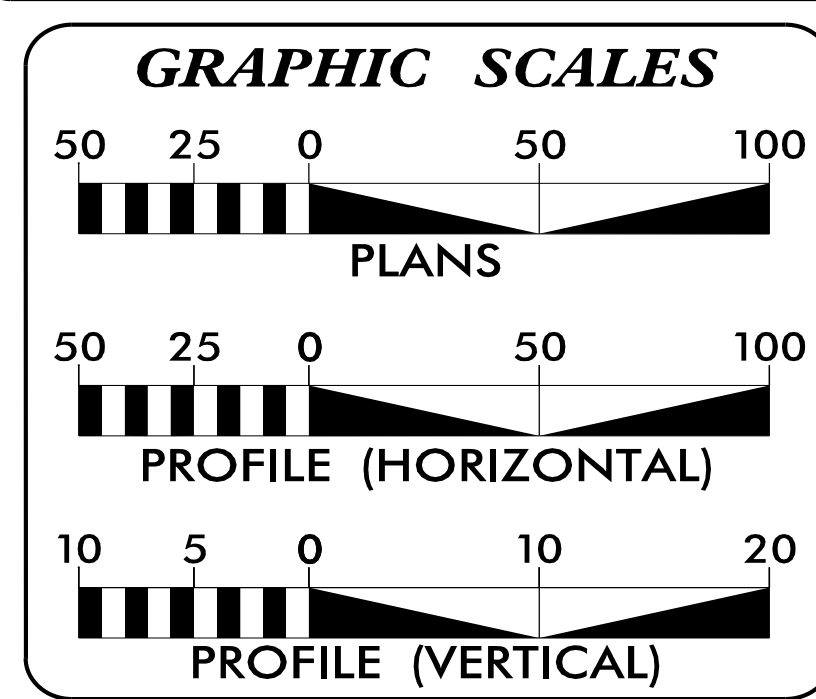
-L- STA. 6+30.00
BEGIN CONSTRUCTION
TIP PROJECT B-3159

BEGIN BRIDGE
-L- STA. 12+66.97

END BRIDGE
-L- STA 14+16.47

CLEARING ON THIS PROJECT SHOULD BE PERFORMED TO THE LIMITS ESTABLISHED BY METHOD ____.
THIS IS A FULL CONTROLLED-ACCESS PROJECT WITH ACCESS TO BE SHOWN ON PLANS.
THIS PROJECT IS WITHIN THE CITY LIMITS OF LEXINGTON.

HINDE ENGINEERING
License No. C-2639
401 Harrison Oaks Blvd., Suite 145 Cary, NC 27513



INDEX OF SHEETS

SHEET NO.	DESCRIPTION
UO-01	TITLE SHEET
UO-02 THRU UO-05	UBO PLAN SHEETS

UTILITY OWNERS ON PROJECT

(A)	CITY OF LEXINGTON POWER-POWER DISTRIBUTION
(B)	CITY OF LEXINGTON POWER-POWER TRANSMISSION
(C)	CITY OF LEXINGTON-GAS
(D)	CITY OF LEXINGTON-SANITARY SEWER
(E)	WINDSTREAM-TELEPHONE
(F)	TIME WARNER CABLE-TV CABLE

PREPARED IN THE OFFICE OF:
**DIVISION OF HIGHWAYS
UTILITIES UNIT
UTILITIES ENGINEERING**

1555 MAIL SERVICES CENTER
RALEIGH, NC 27699-1555
PHONE (919) 707-6690
FAX (919) 250-4151

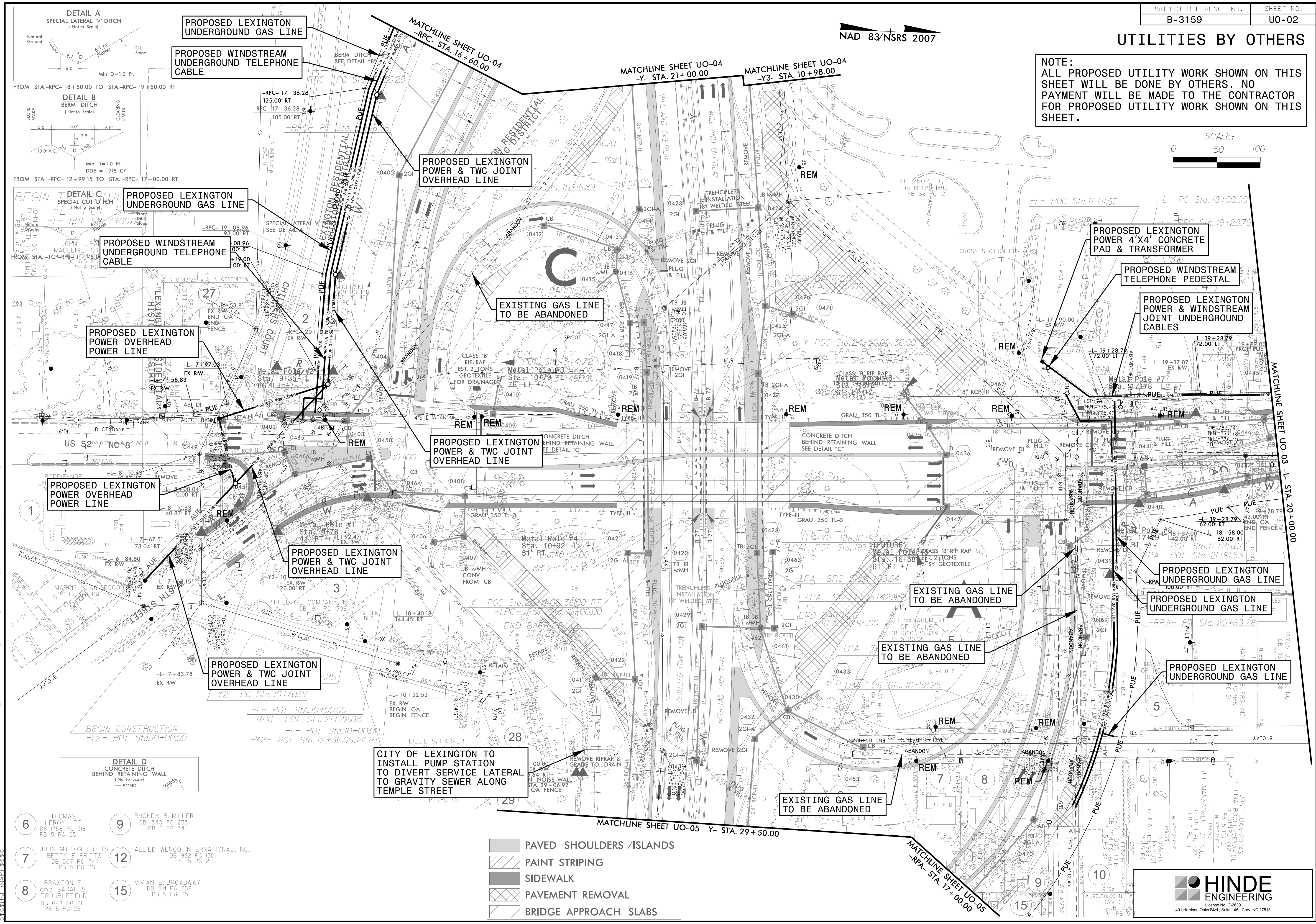
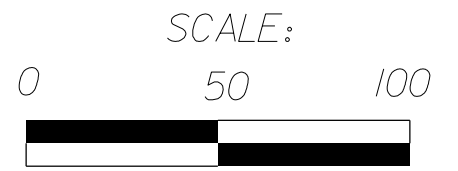
Roger Worthington, P.E. UTILITIES SECTION ENGINEER
Steve McKee, P.E. UTILITIES SQUAD LEADER PROJECT ENGINEER
Jamshid Hafshejani UTILITIES PROJECT DESIGNER

13-JUL-2015 08:33 S:\Server_Files\PROJECTS\2012\202801.00 B-3159\Design\Utilities\Engineering\UBO\Proj\B3159_ut_tsh_UO01_psh.dgn \$\$\$USERNAME\$\$\$

UTILITIES BY OTHERS

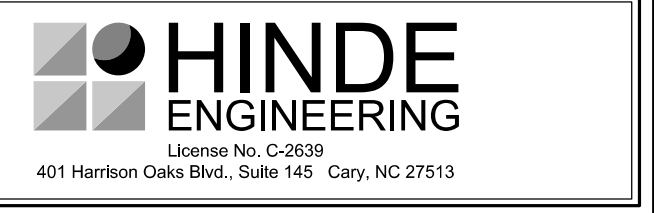
NAD 83/NSRS 2007

NOTE:
ALL PROPOSED UTILITY WORK SHOWN ON THIS SHEET WILL BE DONE BY OTHERS. NO PAYMENT WILL BE MADE TO THE CONTRACTOR FOR PROPOSED UTILITY WORK SHOWN ON THIS SHEET.



- 6 THOMAS LEROY LEE DB 175 PG 38 PB 5 PG 25
- 7 JOHN MILTON FRITTS BETTY E FRITTS DB 507 PG 744 PB 5 PG 25
- 8 BRAXTON E. SARAH S. TROUBLEFIELD DB 648 PG 21 PB 5 PG 25
- 9 RHONDA B. MILLER DB 1340 PG 233 PB 5 PG 34
- 12 ALLIED WENCO INTERNATIONAL, INC. DB 952 PG 1301 PB 5 PG 21
- 15 VIVIAN E. BROADWAY DB 514 PG 359 PB 5 PG 25

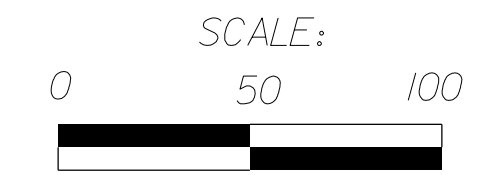
- PAVED SHOULDERS /ISLANDS
- PAINT STRIPING
- SIDEWALK
- PAYEMENT REMOVAL
- BRIDGE APPROACH SLABS



C:\JUL-2015\09-47\PROJECTS\2012\2012001\B-3159\Design\Utilities\UO\Pro\B3159_UO-02.psh.dgn
 2015-09-04 10:47:47 AM

UTILITIES BY OTHERS

NOTE:
ALL PROPOSED UTILITY WORK SHOWN ON THIS SHEET WILL BE DONE BY OTHERS. NO PAYMENT WILL BE MADE TO THE CONTRACTOR FOR PROPOSED UTILITY WORK SHOWN ON THIS SHEET.

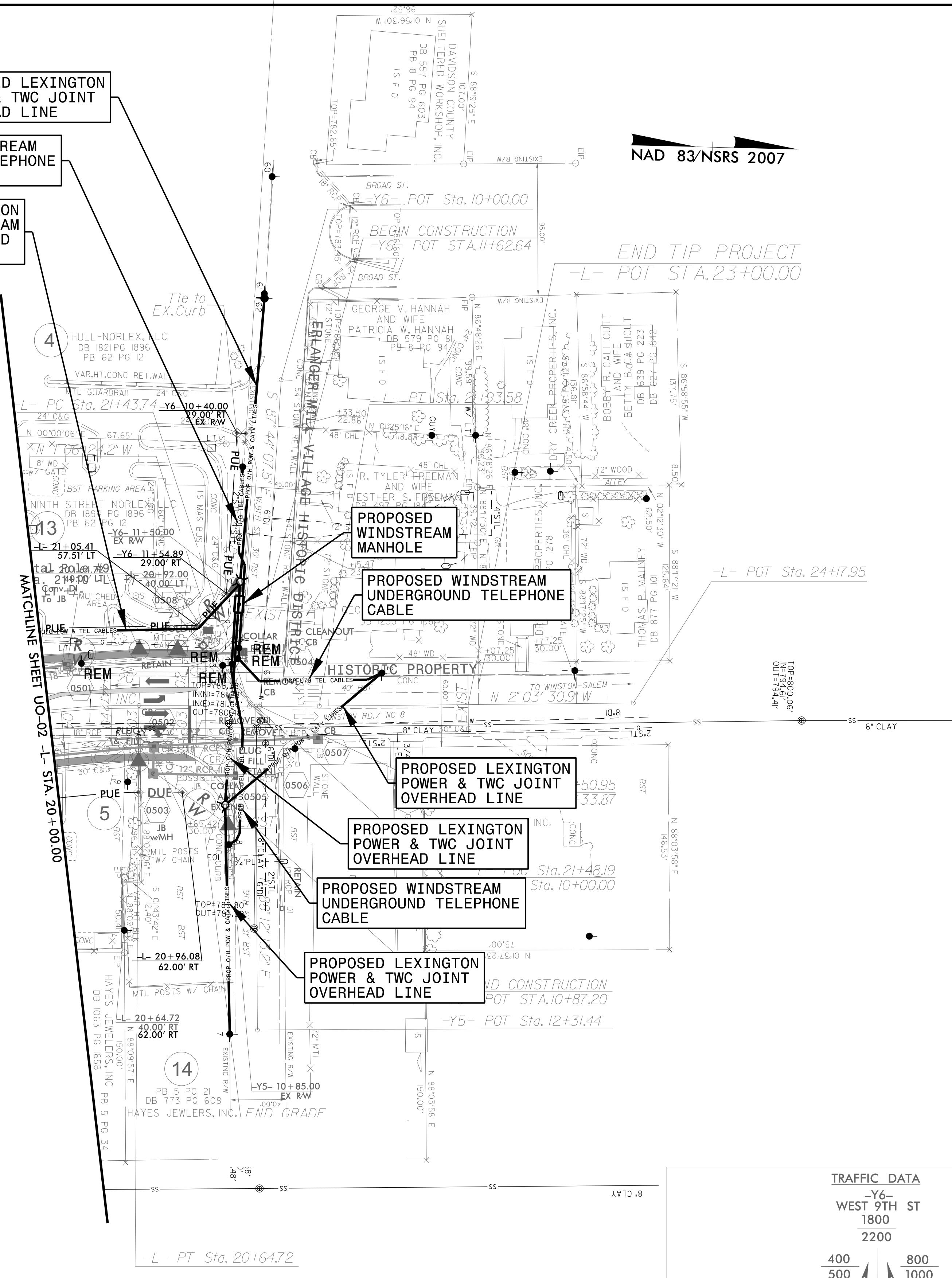


NAD 83/NSRS 2007

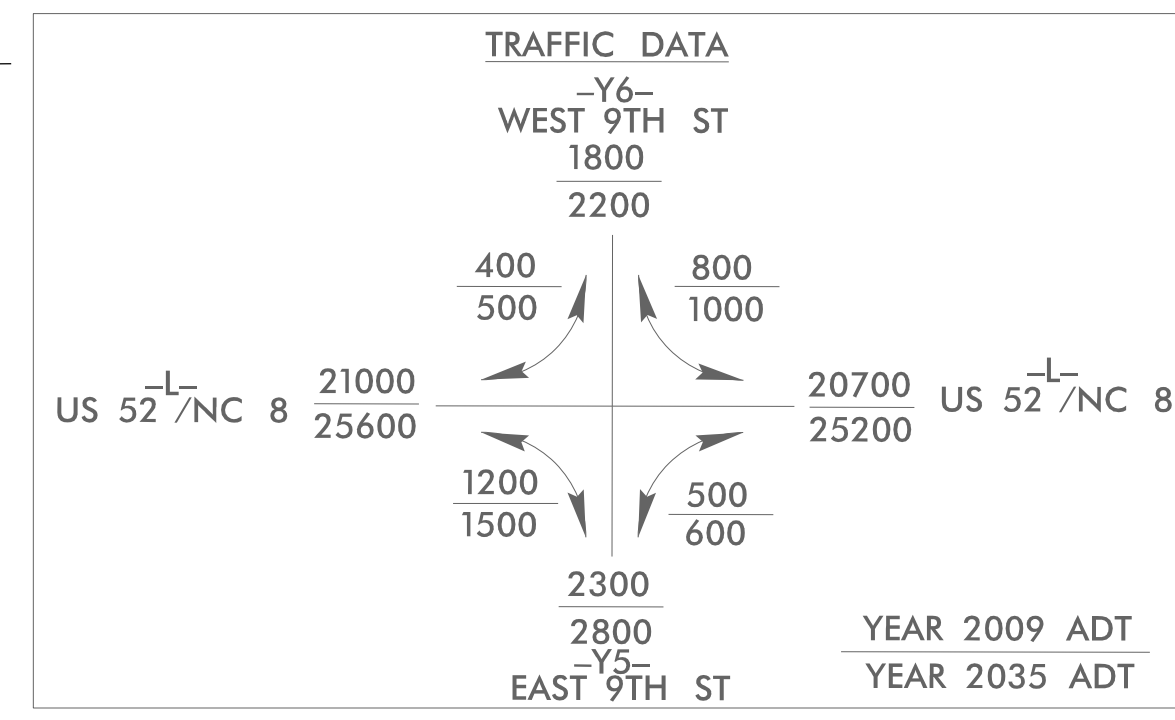
PROPOSED LEXINGTON POWER & TWC JOINT OVERHEAD LINE

PROPOSED WINDSTREAM UNDERGROUND TELEPHONE CABLE

PROPOSED LEXINGTON POWER & WINDSTREAM JOINT UNDERGROUND CABLES



<p>-L- PI Sta 19+97.13 Δ = 14' 36" 42.4" (RT) D = 10' 44" 58.8" L = 135.93' T = 68.33' R = 533.00' SE = SEE PLANS</p>	<p>-L- PI Sta 21+68.66 Δ = 0' 57" 06.7" (LT) D = 1' 54" 35.5" L = 49.84' T = 24.92' R = 3,000.00' SE = SEE PLANS</p>
---	--



ISLANDS

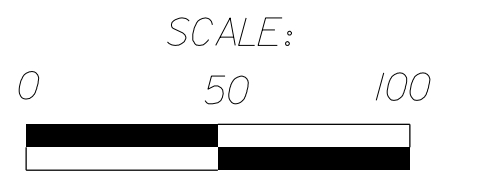
SIDEWALK

NOTES:
SEE SHEET 8 FOR -L- PROFILE
SEE SHEET 2-H FOR INTERSECTION DETAIL

C:\JUL-2015\PROJECTS\2012\2012001.00 B-3159\Design\Utilities\UO-02\UO-03.psh.dgn
 05/28/2015 10:58:33 AM
 05/28/2015 10:58:33 AM

UTILITIES BY OTHERS

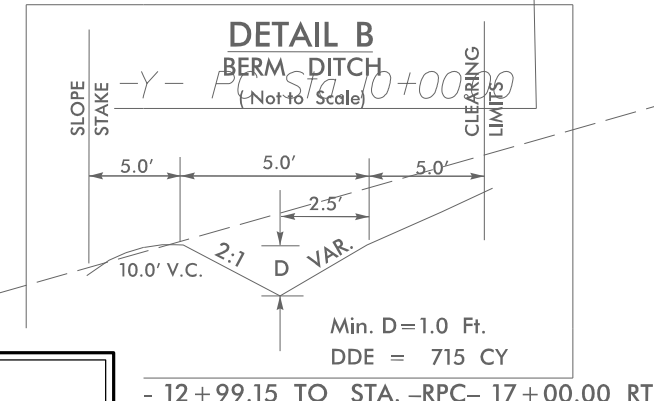
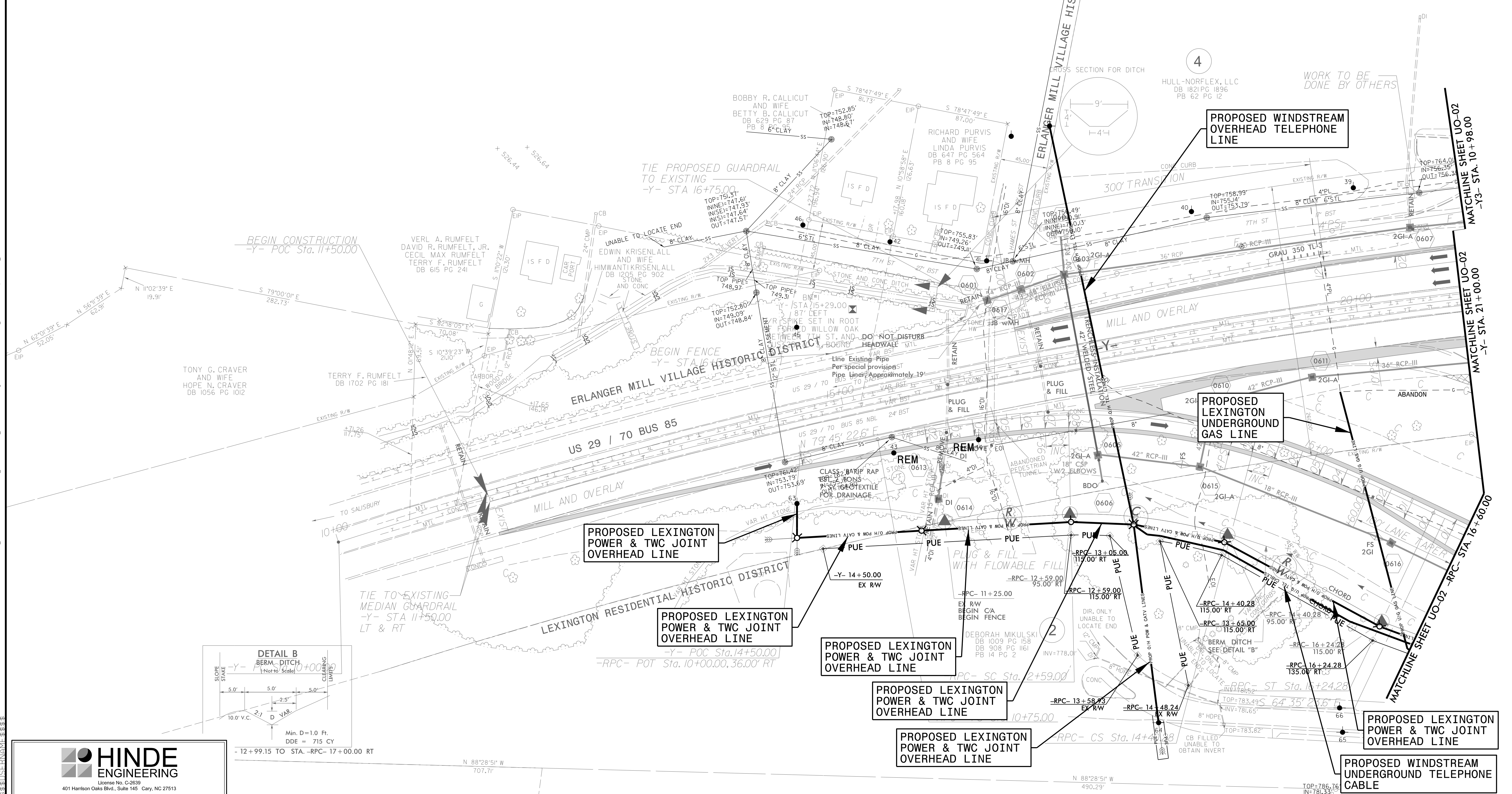
NOTE:
ALL PROPOSED UTILITY WORK SHOWN ON THIS SHEET WILL BE DONE BY OTHERS. NO PAYMENT WILL BE MADE TO THE CONTRACTOR FOR PROPOSED UTILITY WORK SHOWN ON THIS SHEET.



PAVEMENT REMOVAL
 PAVED SHOULDER
 NOTES:
 SEE SHEET 10 FOR -RPC- PROFILE
 SEE SHEET 11 FOR -Y3- PROFILE

-RPC-			-Y-		
PI Sta 11+97.82	PI Sta 13+50.37	PI Sta 15+01.75	PI Sta 25+58.78		
$\theta_s = 8' 58" 47.7"$	$\Delta = 17' 41" 38.5" (RT)$	$\theta_s = 8' 58" 47.7"$	$\Delta = 30' 35" 22.0" (RT)$		
$L_s = 184.00'$	$D = 9' 45" 38.8"$	$L_s = 184.00'$	$D = 1' 00" 18.7"$		
$LT = 122.82'$	$L = 181.28'$	$LT = 122.82'$	$L = 3.04315'$		
$ST = 61.48'$	$T = 91.37'$	$ST = 61.48'$	$T = 1,558.78'$		
	$R = 587.00'$		$R = 5,700.00'$		
	$SE = .08$		$SE = EXIST$		

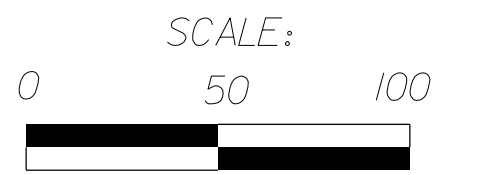
NAD 83/NRS 2007



C:\JUL-2015-05-29-PROJECTS\2012\2012801.00 B-3159\Design\Utilities\Engineering\UBO\Proj\B3159-ut-udf6-UD04-psd.dgn

UTILITIES BY OTHERS

NOTE:
 ALL PROPOSED UTILITY WORK SHOWN ON THIS SHEET WILL BE DONE BY OTHERS. NO PAYMENT WILL BE MADE TO THE CONTRACTOR FOR PROPOSED UTILITY WORK SHOWN ON THIS SHEET.



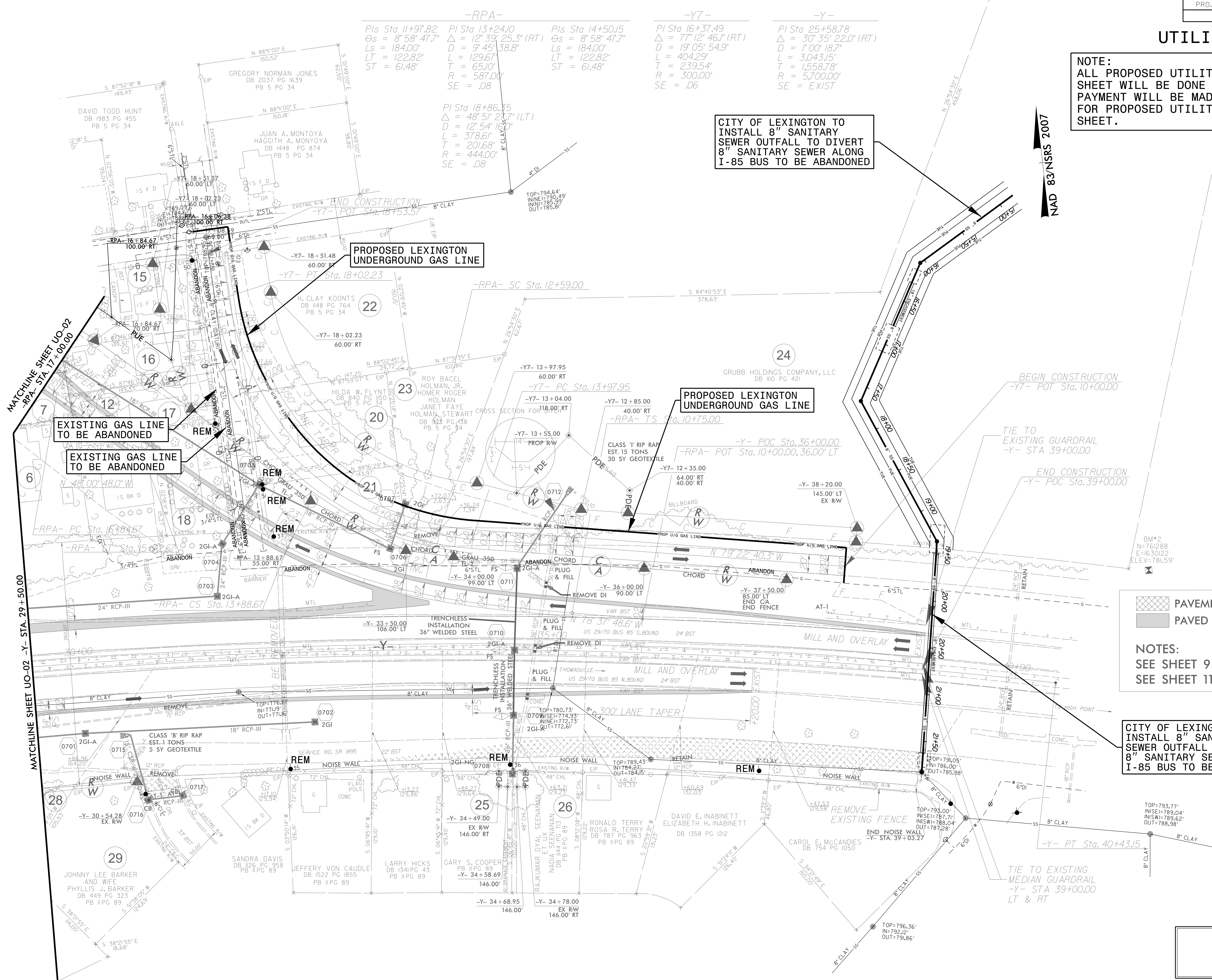
- 6 THOMAS LEROY LEE
DB 1758 PG 318
PB 5 PG 25
- 7 JOHN MILTON FRITTS
BETTY E FRITTS
DB 507 PG 744
PB 5 PG 25
- 15 VIVIAN E. BROADWAY
DB 514 PG 359
PB 5 PG 25
- 16 LAKETA S. PETERSON
DB 1393 PG 195
PB 5 PG 34
- 17 TODD, J. SURRATT
DB 2012 PG 2079
PB 5 PG 34
- 18 JAMES EARL LANIER
DEBRA LANIER
DB 1805 PG 1273
PB 5 PG 34
- 19 HEIH, TAM
YIM CHAU WU TAM
DB 1235 PG 948
PB 5 PG 34
- 21 ROBERT L. EVERHART, III

PAVEMENT REMOVAL
 PAVED SHOULDER

NOTES:
 SEE SHEET 9 FOR -RPA- PROFILE.
 SEE SHEET 11 FOR -Y7- PROFILE.

CITY OF LEXINGTON TO INSTALL 8" SANITARY SEWER OUTFALL TO DIVERT 8" SANITARY SEWER ALONG I-85 BUS TO BE ABANDONED

CITY OF LEXINGTON TO INSTALL 8" SANITARY SEWER OUTFALL TO DIVERT 8" SANITARY SEWER ALONG I-85 BUS TO BE ABANDONED



-RPA-
 Pls Sta 11+97.82
 $\Delta = 8^\circ 58' 47.7"$
 $L_s = 184.00'$
 $LT = 122.82'$
 $ST = 61.48'$

-Y7-
 Pls Sta 13+24.10
 $\Delta = 12^\circ 39' 25.3"$ (RT)
 $L_s = 184.00'$
 $LT = 122.82'$
 $ST = 61.48'$

-Y-
 Pls Sta 14+50.15
 $\Delta = 8^\circ 58' 47.7"$
 $L_s = 184.00'$
 $LT = 122.82'$
 $ST = 61.48'$

-Y7-
 Pls Sta 16+37.49
 $\Delta = 77^\circ 12' 46.1"$ (RT)
 $L_s = 19^\circ 05' 54.9"$
 $L = 404.29'$
 $T = 239.54'$
 $R = 300.00'$
 $SE = .06$

-Y-
 Pls Sta 25+58.78
 $\Delta = 30^\circ 35' 22.0"$ (RT)
 $L_s = 1^\circ 00' 18.7"$
 $L = 3,043.15'$
 $T = 1,558.78'$
 $R = 5,700.00'$
 $SE = EXIST$

26 JUL 2015 09:34 PROJECTS\2012\2012001\B-3159\Design\Utilities\UBO\Proj\B3159_U-05.dwg 7:00:05 psh.dgn
 26 JUL 2015 09:34 PROJECTS\2012\2012001\B-3159\Design\Utilities\UBO\Proj\B3159_U-05.dwg 7:00:05 psh.dgn
 26 JUL 2015 09:34 PROJECTS\2012\2012001\B-3159\Design\Utilities\UBO\Proj\B3159_U-05.dwg 7:00:05 psh.dgn