

NOTES

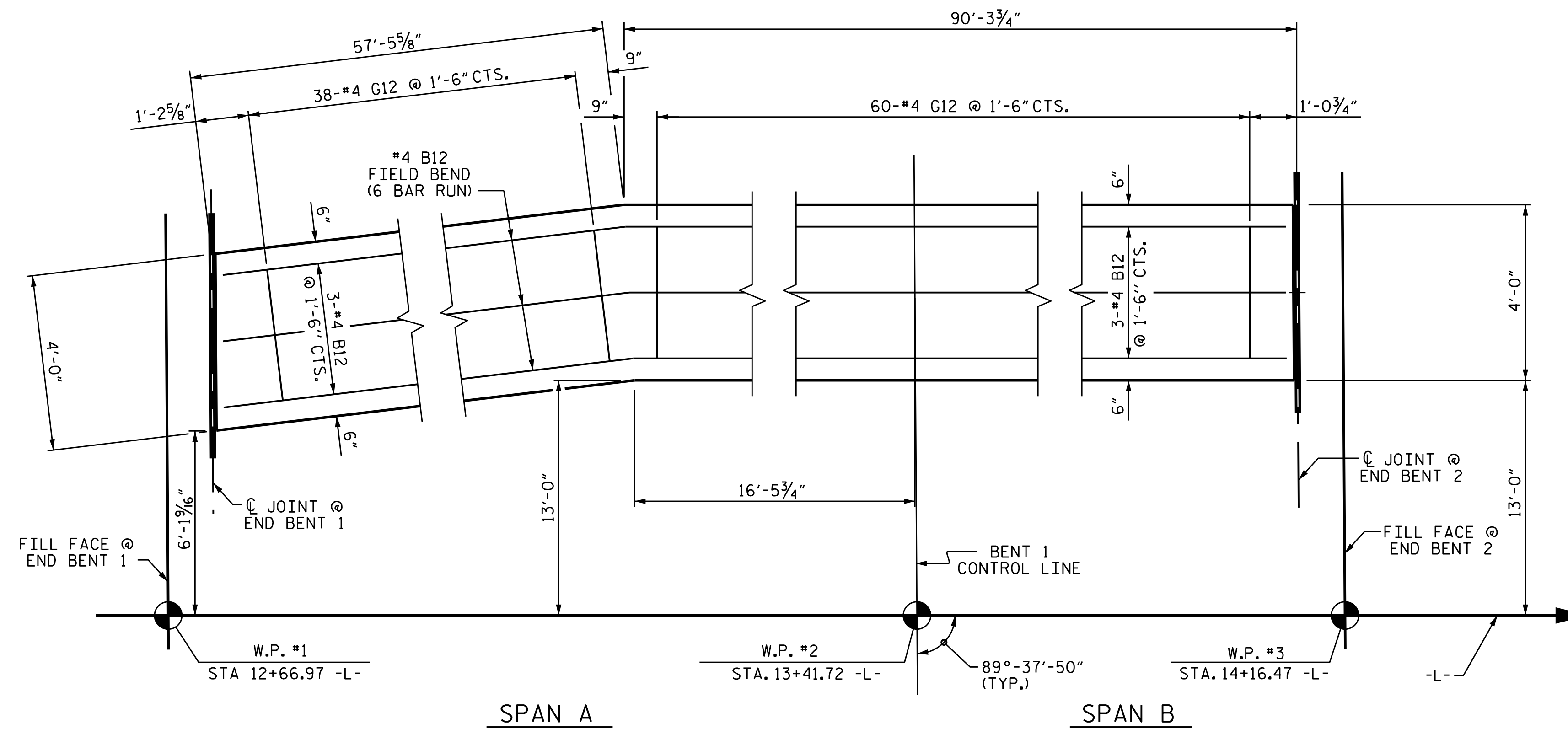
THE MONOLITHIC CONCRETE ISLAND IN A CONTINUOUS UNIT SHALL NOT BE CAST UNTIL ALL SLAB CONCRETE IN THAT UNIT HAS BEEN CAST AND HAS REACHED A MINIMUM COMPRESSIVE STRENGTH OF 3,000 PSI.

ALL REINFORCING STEEL IN THE MONOLITHIC CONCRETE ISLAND SHALL BE EPOXY COATED.

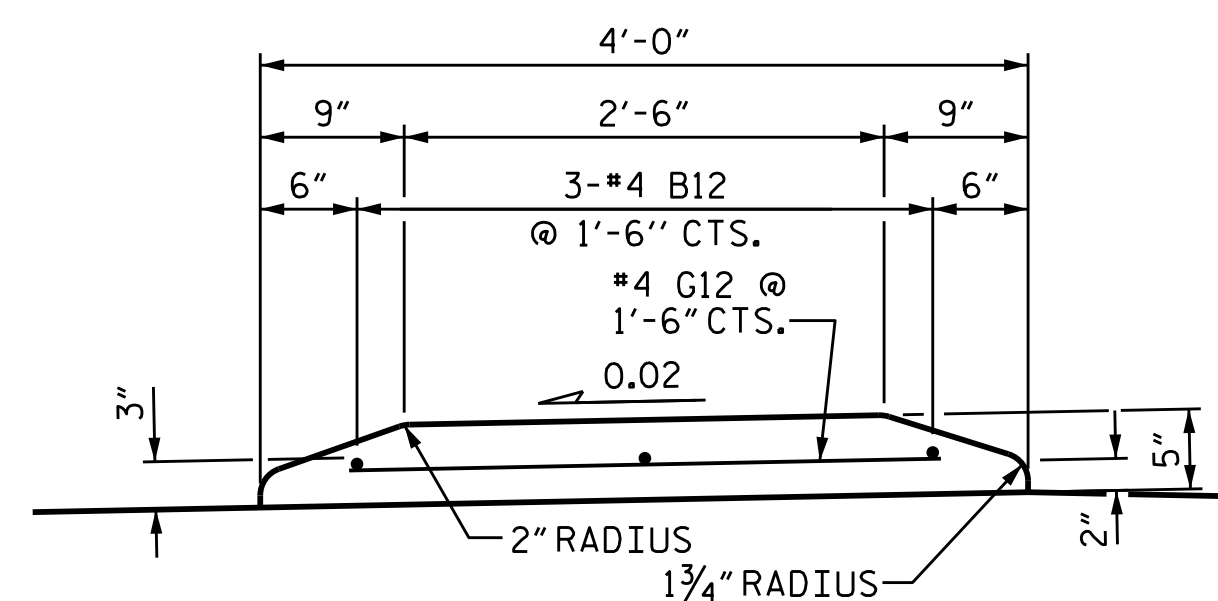
GROOVED CONTRACTION JOINTS, 1/2" IN DEPTH, SHALL BE TOOLED IN ALL EXPOSED FACES OF THE MONOLITHIC CONCRETE ISLAND IN ACCORDANCE WITH ARTICLE 825-10(B) OF THE STANDARD SPECIFICATIONS. THE CONTRACTION JOINTS SHALL BE LOCATED AT A SPACING OF 8 FEET TO 10 FEET BETWEEN EXPANSION JOINTS. NO CONTRACTION JOINTS WILL BE REQUIRED FOR SEGMENTS LESS THAN 10 FEET IN LENGTH.

PAYMENT FOR THE MONOLITHIC CONCRETE ISLAND SHALL BE INCLUDED IN UNIT PRICE FOR "REINFORCED CONCRETE DECK SLAB".

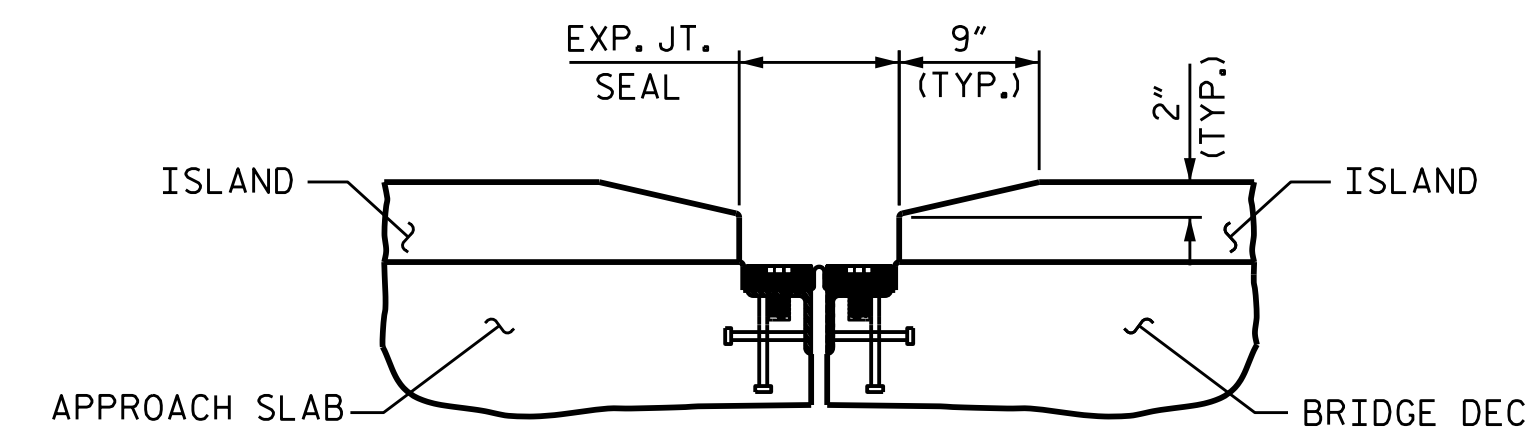
ALL REINFORCING STEEL IN MONOLITHIC CONCRETE ISLAND SHALL BE EPOXY COATED.



PLAN OF MONOLITHIC CONCRETE ISLAND



SECTION THROUGH MONOLITHIC CONCRETE ISLAND



DETAILS AT EXPANSION JOINT SEAL

PROJECT NO. B-3159
DAVIDSON COUNTY
 STATION: 13+41+72 -L-



STATE OF NORTH CAROLINA DEPARTMENT OF TRANSPORTATION RALEIGH						SHEET NO. S-12
SUPERSTRUCTURE MONOLITHIC CONCRETE ISLAND DETAILS						
REVISIONS						TOTAL SHEETS 43
NO.	BY:	DATE:	NO.	BY:	DATE:	
1			3			
2			4			

DRAWN BY : K. D. LAYNE DATE : 4-21-14
 CHECKED BY : J. D. HAWK DATE : 2-12-15