

NOTES

PROVIDE 1/4" HIGH BEAM BOLSTERS UPPER AT 4'-0" CTS. ATOP THE METAL STAY-IN-PLACE FORMS TO SUPPORT THE BOTTOM MAT OF "A" BARS. WHEN USING REMOVABLE FORMS, PROVIDE CONTINUOUS HIGH CHAIRS FOR METAL DECK (C.H.C.M.) @ 4'-0" CTS. WITH A HEIGHT TO SUPPORT THE BOTTOM MAT OF "A" BARS A CLEAR DISTANCE OF 2 1/2" ABOVE THE TOP OF THE REMOVABLE FORM.

LONGITUDINAL STEEL MAY BE SHIFTED SLIGHTLY, AS NECESSARY, TO AVOID INTERFERENCE WITH STIRRUPS IN PRESTRESSED CONCRETE GIRDERS.

FOR EACH STAGE, PREVIOUSLY CAST CONCRETE IN A CONTINUOUS UNIT SHALL HAVE ATTAINED A MINIMUM COMPRESSIVE STRENGTH OF 3,000 PSI BEFORE ADDITIONAL CONCRETE IS CAST IN THE UNIT.

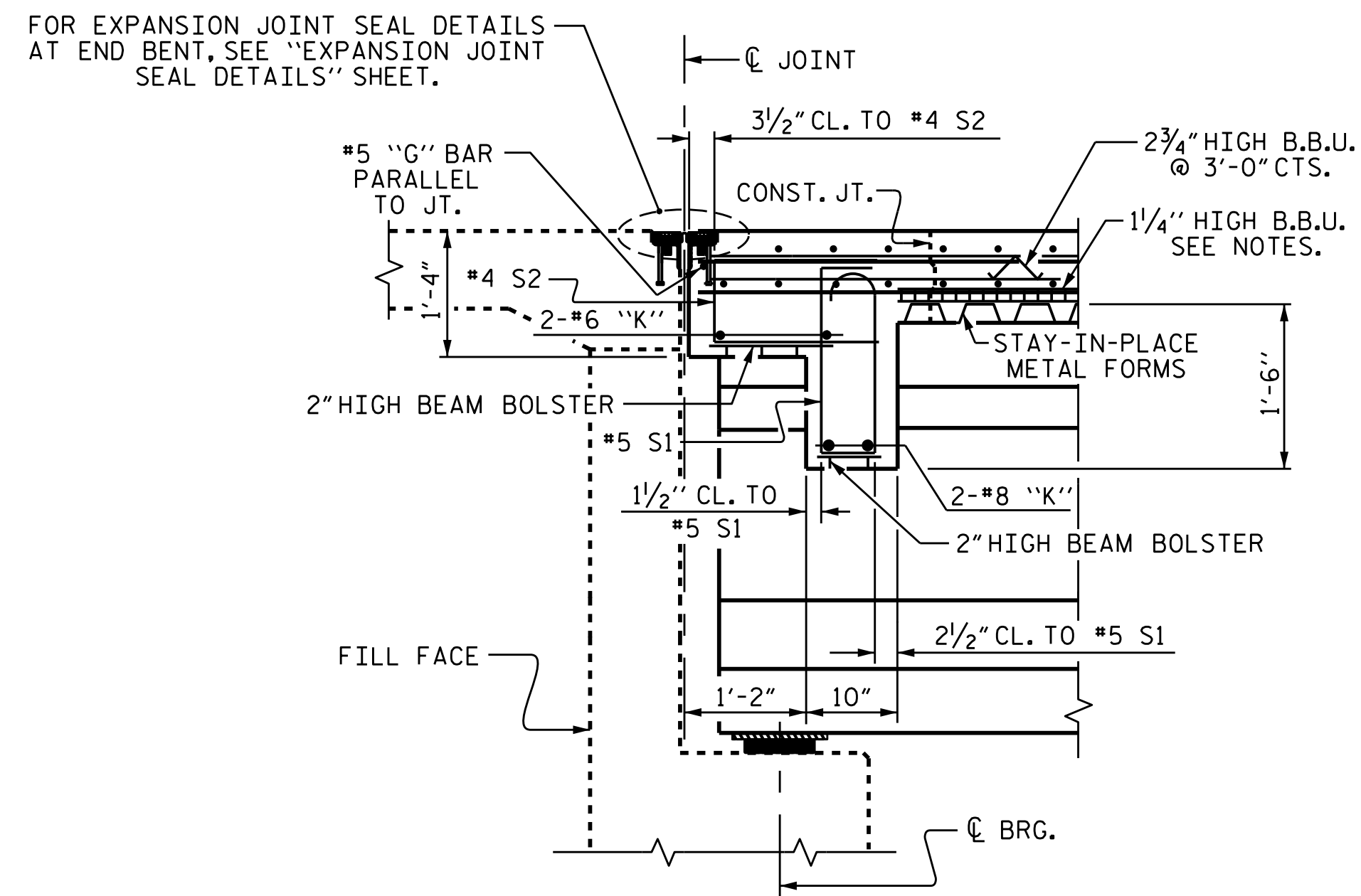
#5 G1 BAR MAY BE SHIFTED SLIGHTLY, AS NECESSARY, TO CLEAR REINFORCING STEEL AND STIRRUPS.

SEE TRAFFIC CONTROL PLANS FOR LOCATION AND PAY LIMITS OF THE ANCHORED PORTABLE CONCRETE BARRIER.

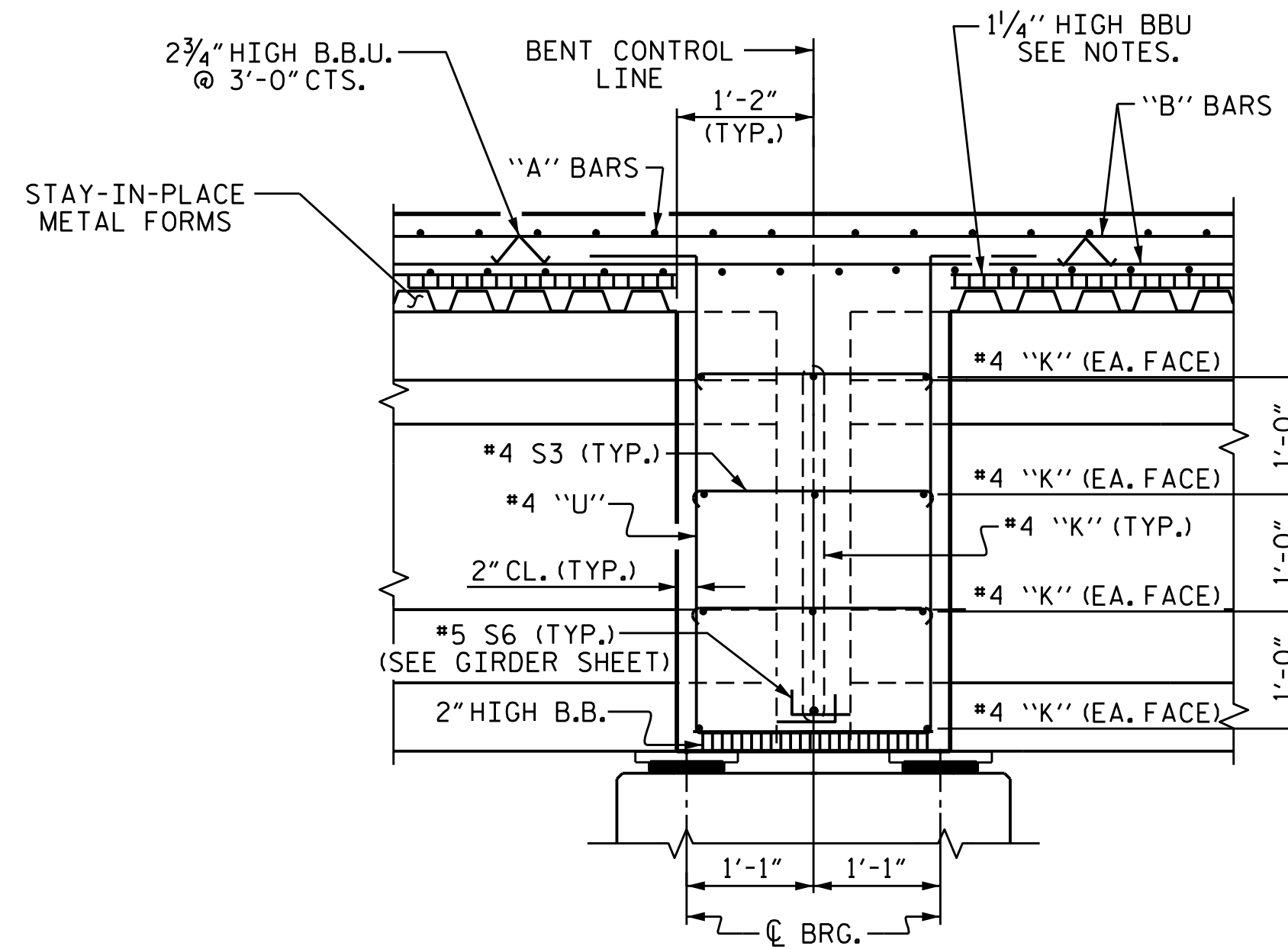
ALL REINFORCING STEEL IN SIDEWALK AND MONOLITHIC CONCRETE ISLAND SHALL BE EPOXY COATED.

NO SEPARATE PAYMENT WILL BE MADE FOR THE SIDEWALK AND MONOLITHIC CONCRETE ISLAND AS THEY ARE INCLUDED IN THE REINFORCED CONCRETE DECK SLAB PAY ITEM.

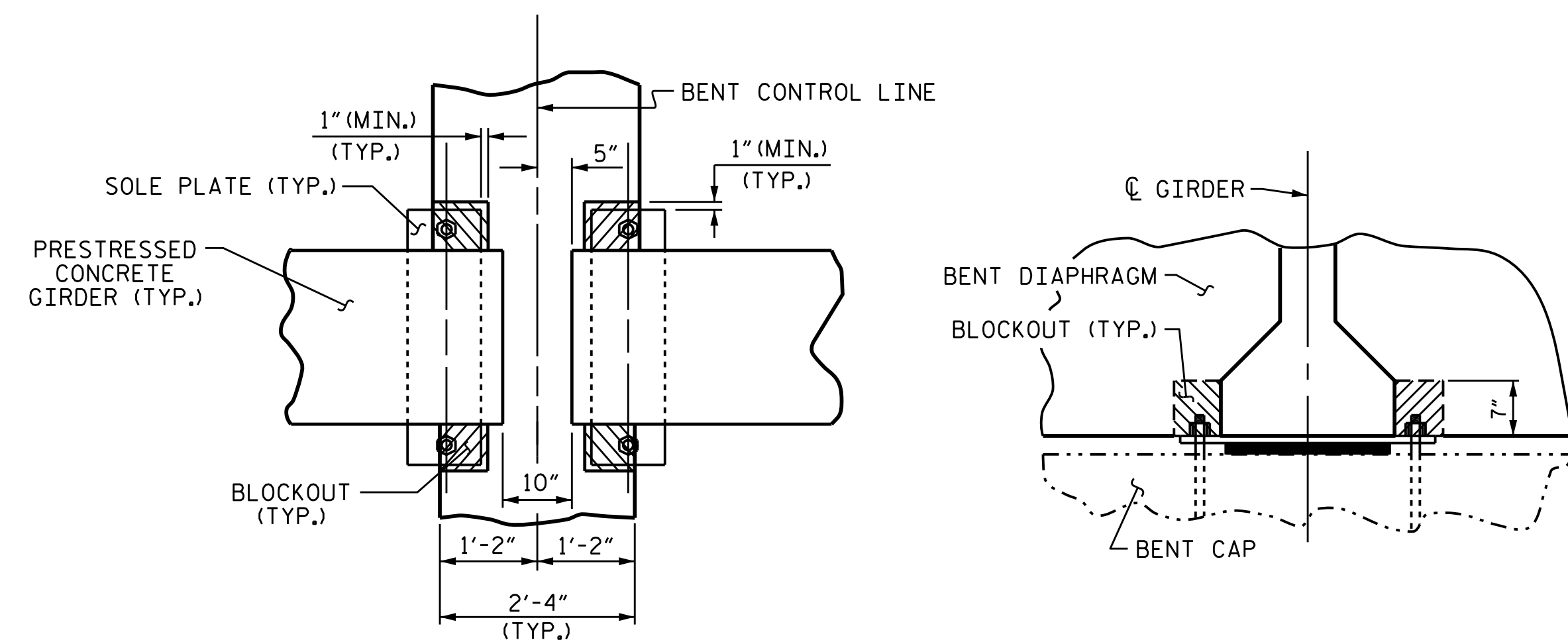
FOR ADDITIONAL DETAILS, SEE "SIDEWALK DETAILS" AND "MONOLITHIC CONCRETE ISLAND DETAILS" SHEETS.



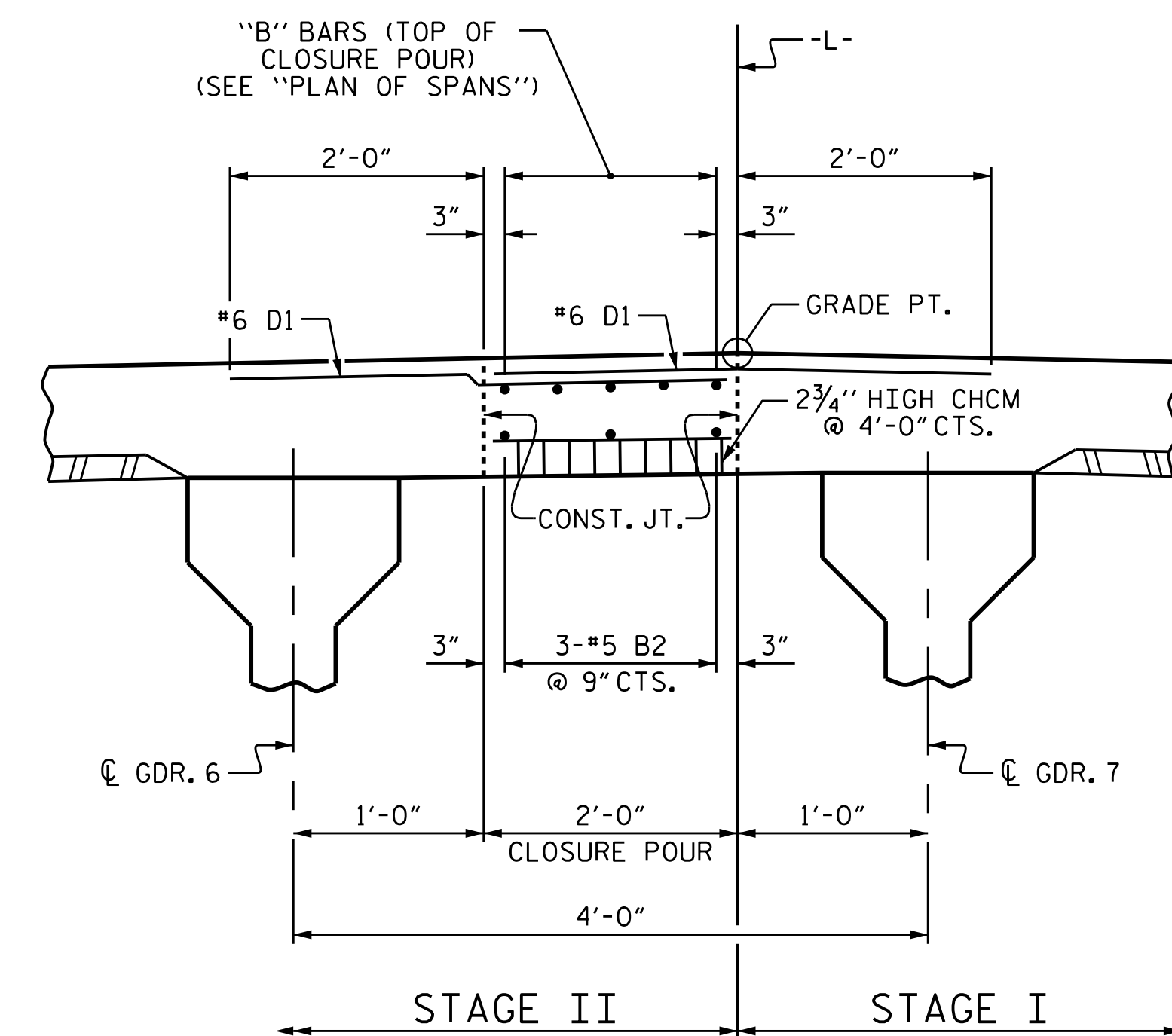
SECTION THRU END BENT DIAPHRAGM



SECTION THRU BENT DIAPHRAGM



BENT DIAPHRAGM BLOCKOUT DETAIL



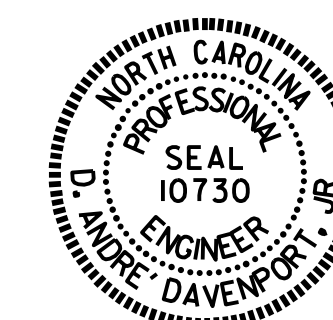
DECK CLOSURE POUR DETAIL

*6 D1 DOWELS SHALL BE PLACED IN THE SAME HORIZONTAL PLANE AS THE TOP REINFORCING STEEL AND EXTEND 1'-9" INTO CLOSURE POUR.

PROJECT NO. B-3159
DAVIDSON COUNTY
 STATION: 13+41.72 -L-

SHEET 3 OF 3

STATE OF NORTH CAROLINA
 DEPARTMENT OF TRANSPORTATION
 RALEIGH
 SUPERSTRUCTURE
 TYPICAL SECTION
 DETAILS



DRAWN BY : M.K. BEARD DATE : 8/1/14
 CHECKED BY : J.D. HAWK DATE : 2/12/15
 DESIGN ENGINEER OF RECORD: R.L. CHESSON DATE : 6/10/15

24-AUG-2015 12:27
 R:\Structures\Plans\B3159.SD.TS.01.dgn
 dadavenport

REVISIONS						SHEET NO.
NO.	BY:	DATE:	NO.	BY:	DATE:	S-8
1			3			TOTAL SHEETS
2			4			43