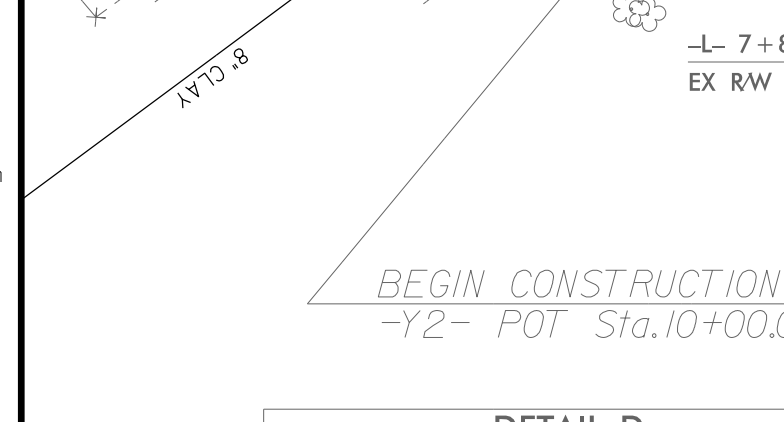
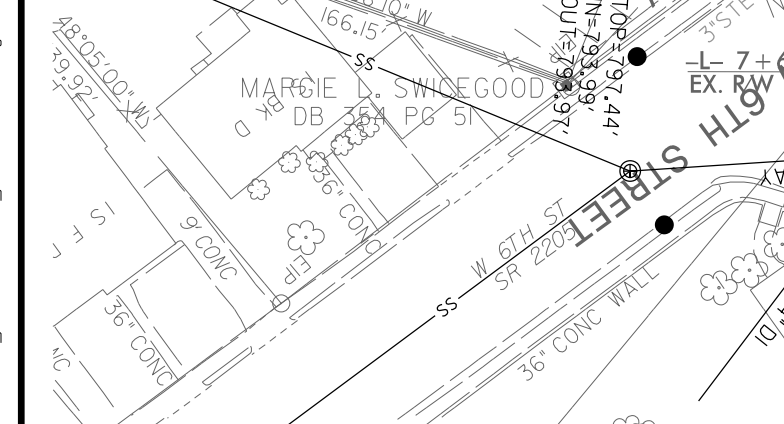
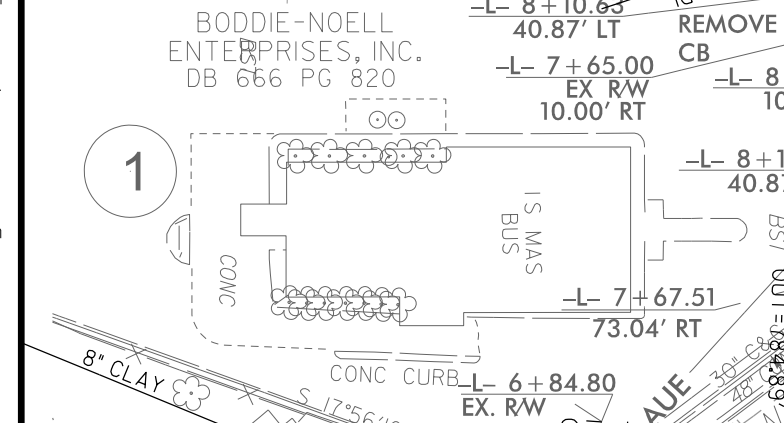
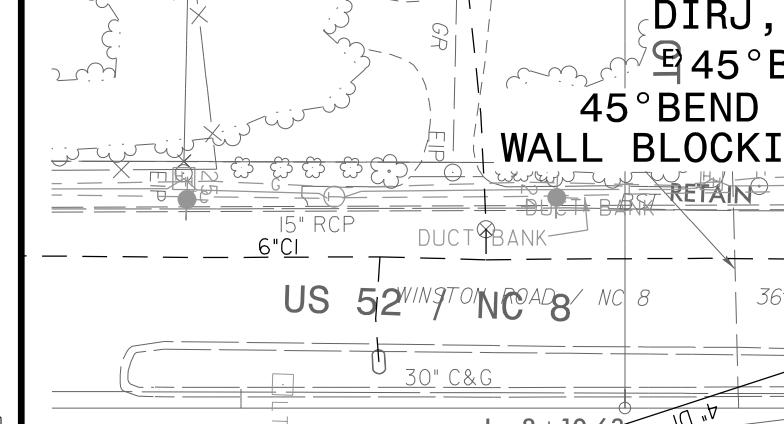
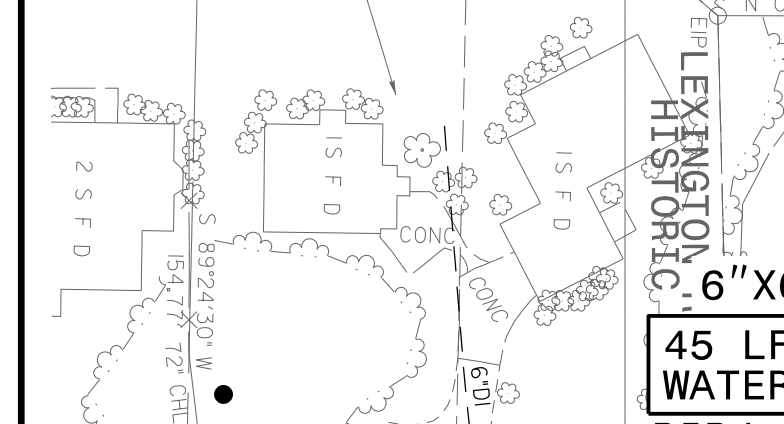
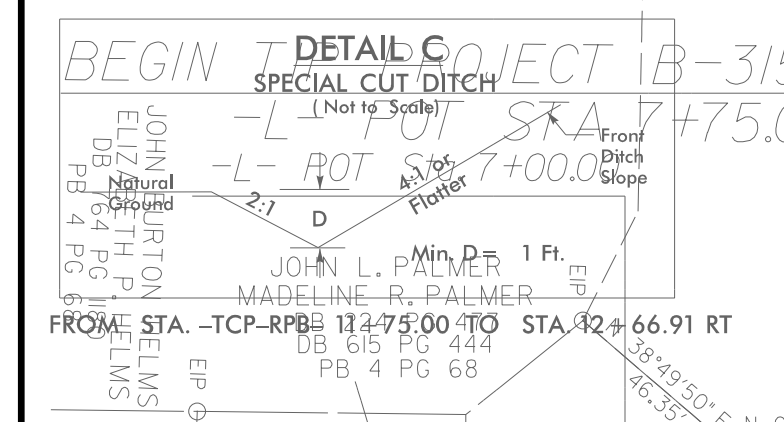
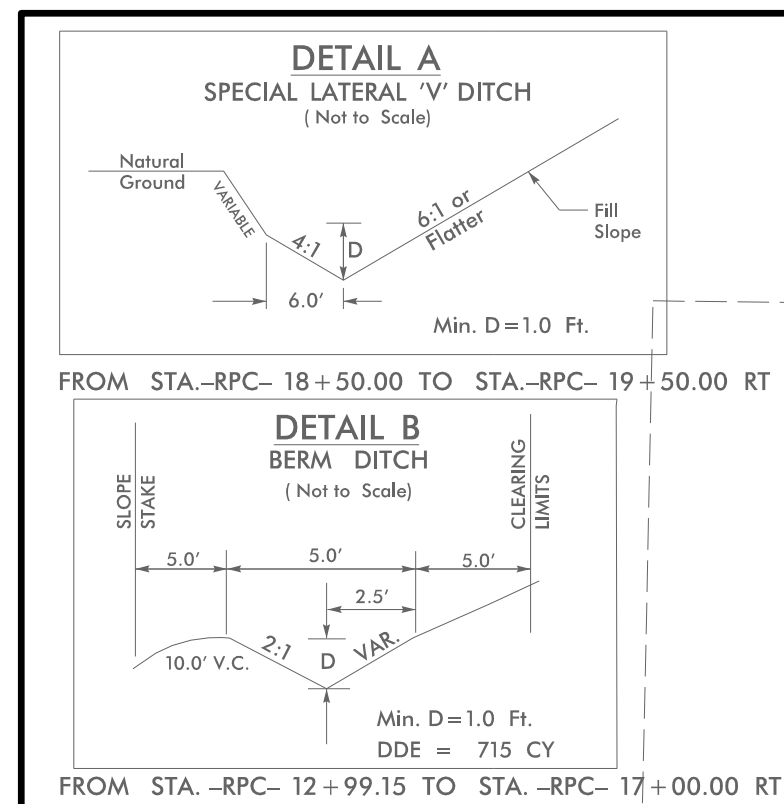
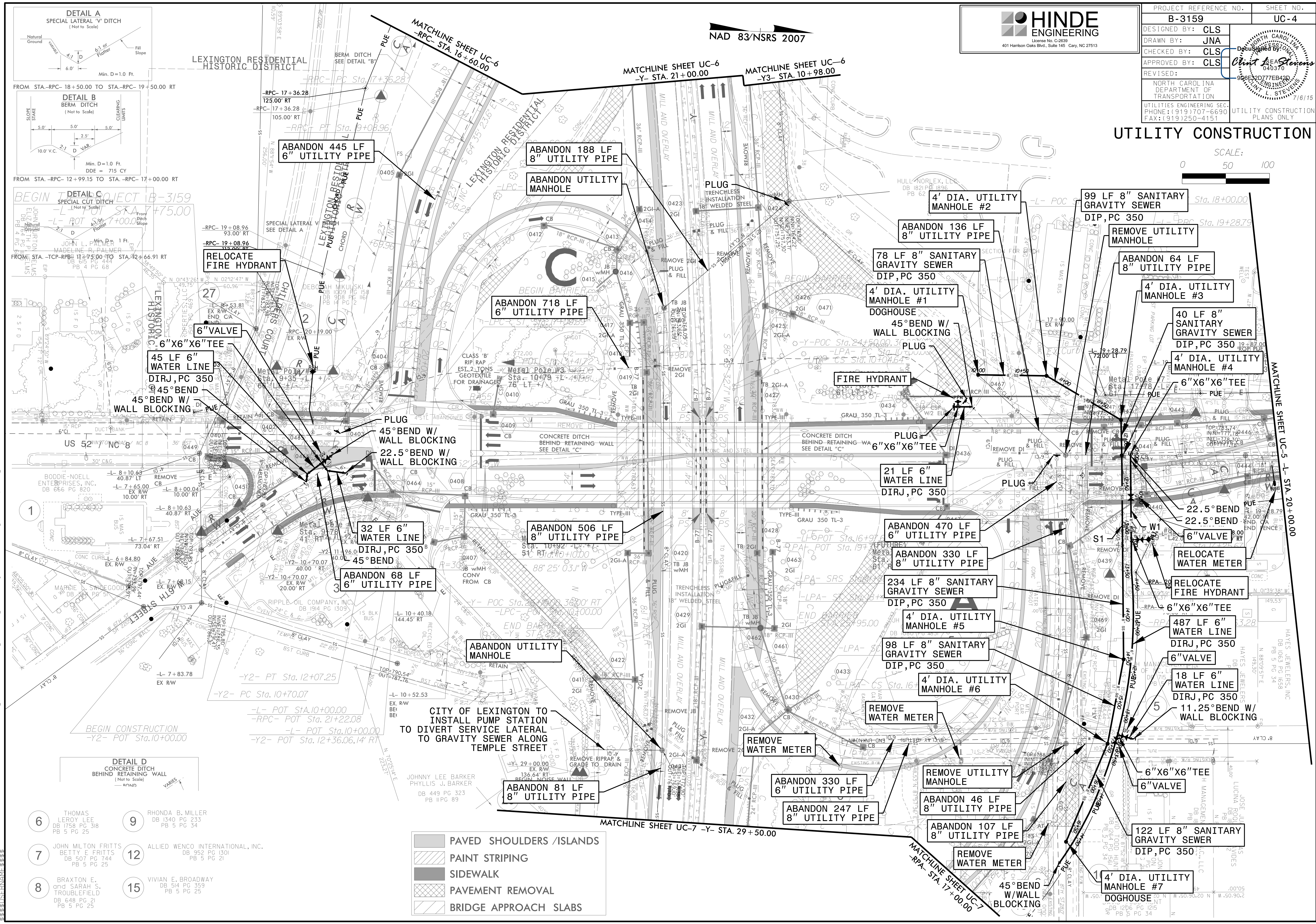


**UTILITY CONSTRUCTION**



6	THOMAS LEROY LEE DB 1758 PG 318 PB 5 PG 25	9	RHONDA B. MILLER DB 1340 PG 233 PB 5 PG 34
7	JOHN MILTON FRITTS BETTY E. FRITTS DB 507 PG 744 PB 5 PG 25	12	ALLIED WENCO INTERNATIONAL, INC. DB 952 PG 1301 PB 5 PG 25
8	BRAXTON E. and SARAH S. TROUBLEFIELD DB 648 PG 21 PB 5 PG 25	15	VIVIAN E. BROADWAY DB 514 PG 359 PB 5 PG 25

	PAVED SHOULDERS / ISLANDS
	PAINT STRIPING
	SIDEWALK
	PAVEMENT REMOVAL
	BRIDGE APPROACH SLABS

26 JUL 2015 09:17 C:\projects\B-3159\Design\Utilities\Engineering\UC-Proj\B3159-ut-rcd4-UC04\_psh.dgn  
 26 JUL 2015 09:17 C:\projects\B-3159\Design\Utilities\Engineering\UC-Proj\B3159-ut-rcd4-UC04\_psh.dgn