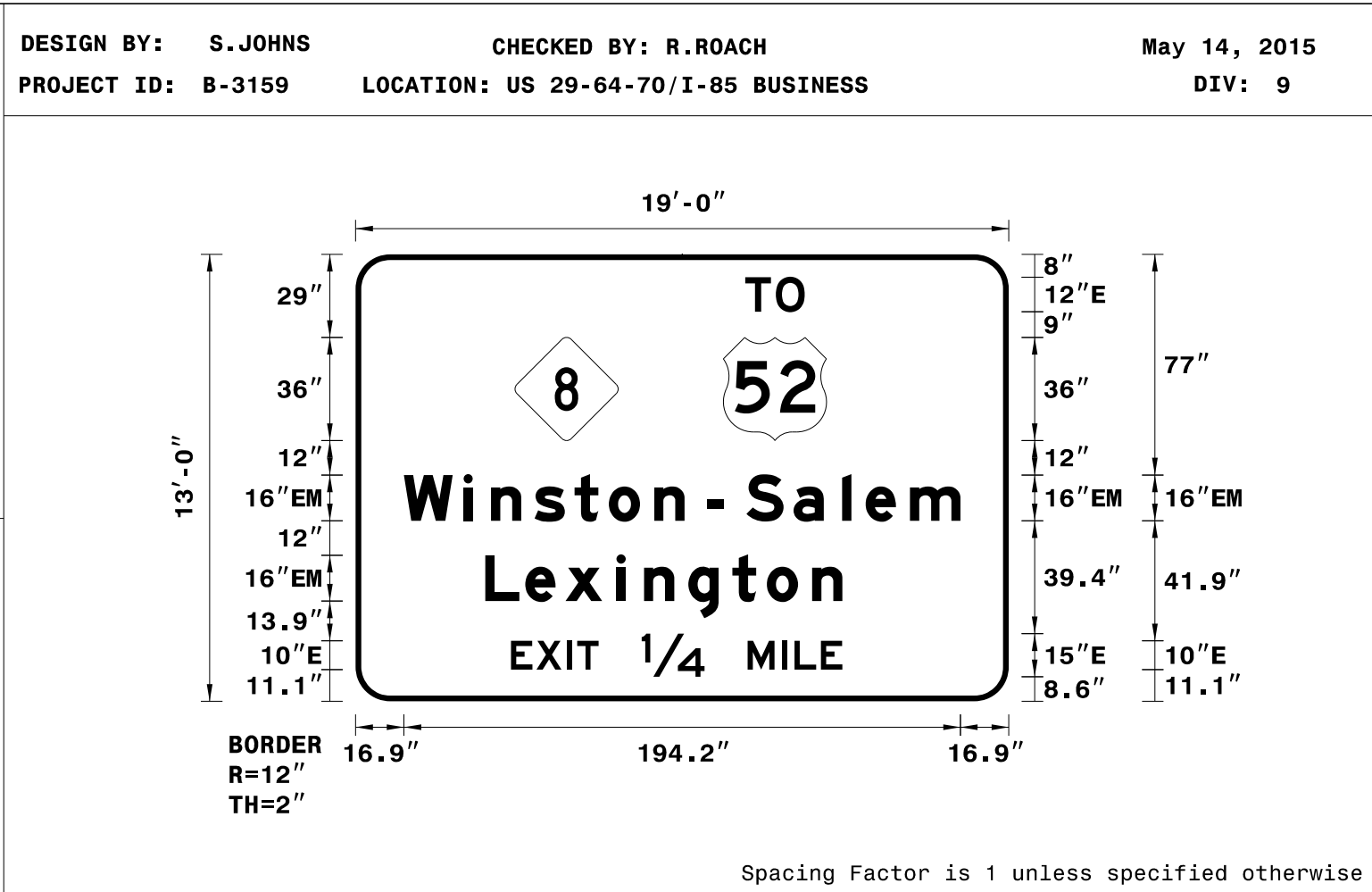


SIGN NUMBER: 101, 104
TYPE: A
QUANTITY: 2
SIGN WIDTH: 19'-0"
HEIGHT: 13'-0"
TOTAL AREA: 247.0 Sq.Ft.
BORDER TYPE: FLUSH
RECESS: 0"
WIDTH: 2"
RADII: 12"
NO. Z BARS: 4
LENGTH: 220.0

SYMBOL	X	Y	WID	HT
M1-5-2-24-10C	55.6	91	36	36
M1_4	128.4	91	36	36

BACKG COLOR: Green
COPY COLOR: White
MATERIAL: 0.125" (3.2 mm) ALUMINUM



USE NOTES: 1,2,3
1. Legend and border(except those that are colored black) shall be direct applied Grade C sheeting.
2. Background shall be Grade C reflective sheeting.
3. Shields; A, B, and C type arrows shall be on 0.032" (0.8mm) aluminum and demountable.

LETTER POSITIONS

Letter spacings are to start of next letter

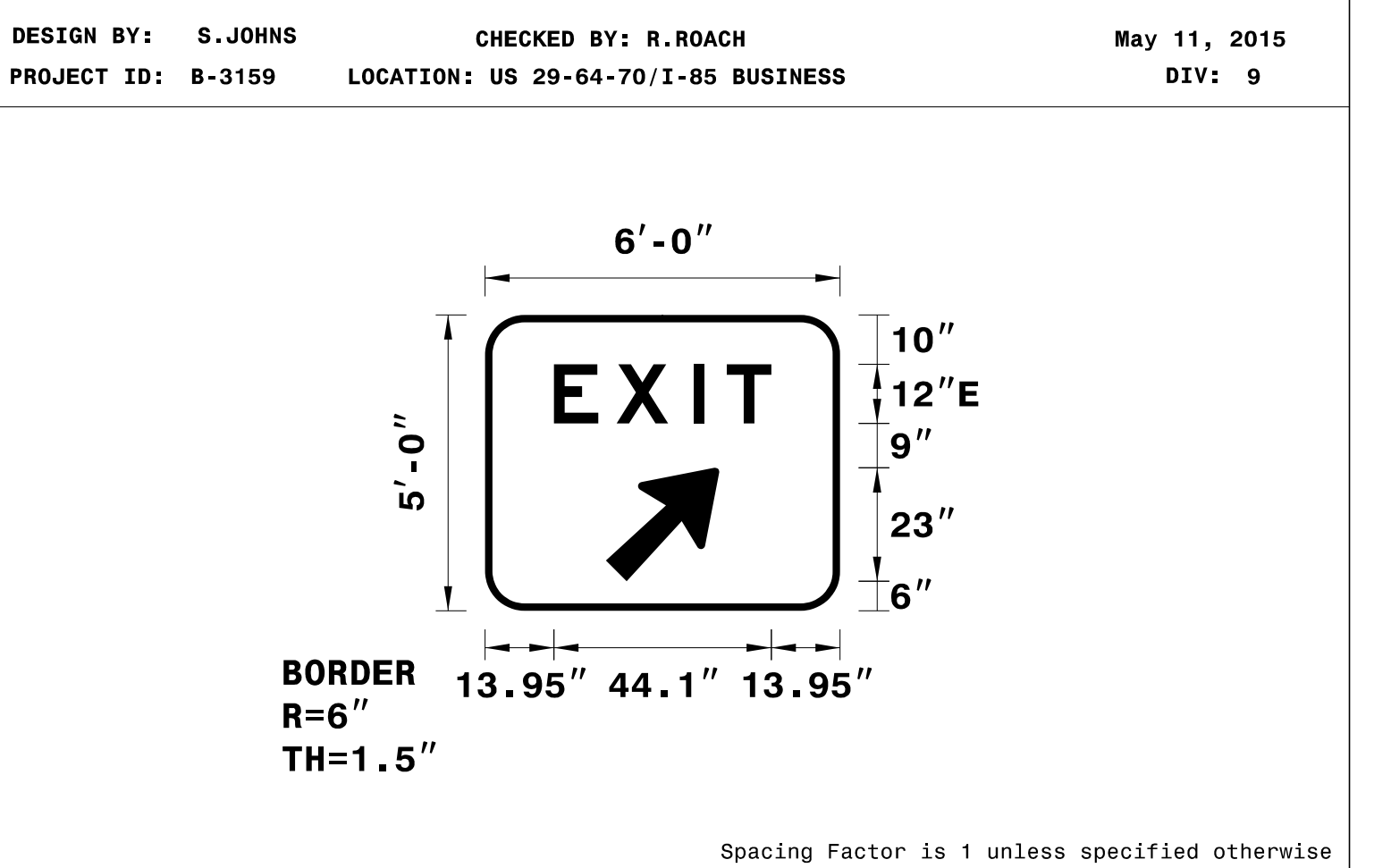
	T	O																			Series/Size		
																					Text Length		
	136	10.7	10.1	71.3																			E 2000
																					20.8		
	16.9	20.8	9.6	15.2	13.9	12	15.8	10.6	8	5.6	8	16.5	17	8.2	15.5	17.6	16.9	EM 2000					
																					194.2		
	45.3	13.9	14.1	17.8	9.6	15.5	15.4	12	15.8	10.6	58.1							EM 2000					
																					124.6		
	54.2	8.9	10.7	3.5	7.5	15	22	15	12	4.4	9.2	7.5	58.1							E 2000			
																					115.7		

FILENAME: SignDesigns
NORTH CAROLINA D.O.T. SIGN DETAIL

SIGN NUMBER: 201, 202
TYPE: A
QUANTITY: 2
SIGN WIDTH: 6'-0"
HEIGHT: 5'-0"
TOTAL AREA: 30.0 Sq.Ft.
BORDER TYPE: FLUSH
RECESS: 0"
WIDTH: 1.5"
RADII: 8"
NO. Z BARS: 2
LENGTH: 64.0

SYMBOL	X	Y	WID	HT
AR_Type A	24.5	6	18.6	29.2

BACKG COLOR: Green
COPY COLOR: White
MATERIAL: 0.125" (3.2 mm) ALUMINUM



USE NOTES: 1,2,3
1. Legend and border(except those that are colored black) shall be direct applied Grade C sheeting.
2. Background shall be Grade C reflective sheeting.
3. Shields; A, B, and C type arrows shall be on 0.032" (0.8mm) aluminum and demountable.

LETTER POSITIONS

Letter spacings are to start of next letter

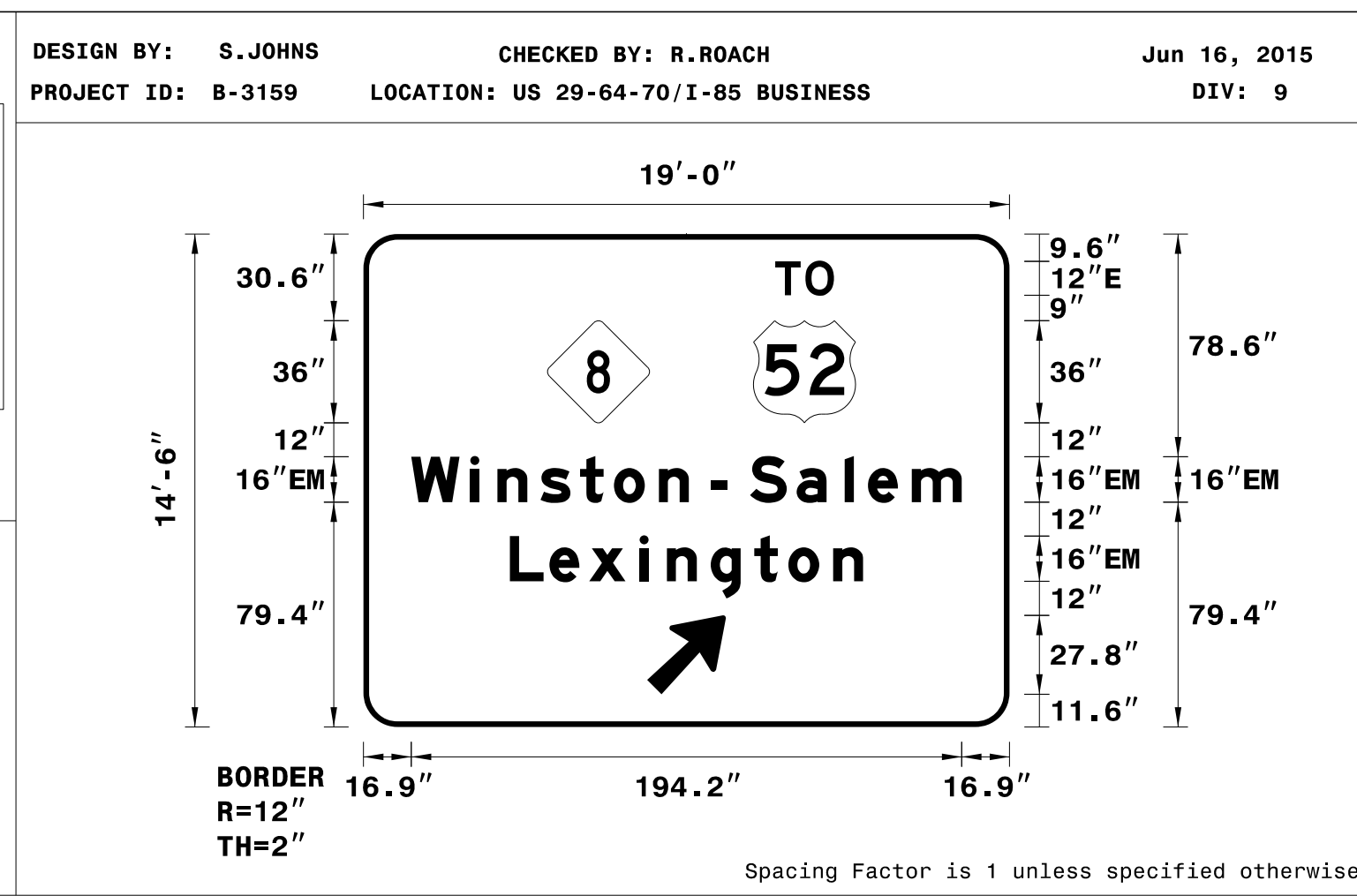
	E	X	I	T															Series/Size		
																				Text Length	
	14	12.7	15.7	6.6	9	14															E 2000
																				44.1	

FILENAME: SignDesigns
NORTH CAROLINA D.O.T. SIGN DETAIL

SIGN NUMBER: 102,103
TYPE: A
QUANTITY: 2
SIGN WIDTH: 19'-0"
HEIGHT: 14'-6"
TOTAL AREA: 275.5 Sq.Ft.
BORDER TYPE: FLUSH
RECESS: 0"
WIDTH: 2"
RADII: 12"
NO. Z BARS: 5
LENGTH: 220.0

SYMBOL	X	Y	WID	HT
M1-5-2-24-10C	64.9	107.4	36	36
M1_4	137.6	107.4	36	36
AR_Type A	100.1	11.6	22.4	35.3

BACKG COLOR: Green
COPY COLOR: White
MATERIAL: 0.125" (3.2 mm) ALUMINUM



USE NOTES: 1,2,3
1. Legend and border(except those that are colored black) shall be direct applied Grade C sheeting.
2. Background shall be Grade C reflective sheeting.
3. Shields; A, B, and C type arrows shall be on 0.032" (0.8mm) aluminum and demountable.

LETTER POSITIONS

Letter spacings are to start of next letter

	T	O																			Series/Size		
																					Text Length		
	145.3	10.7	10.1	62																			E 2000
																					20.8		
	16.9	20.8	9.6	15.2	13.9	12	15.8	10.6	8	5.6	8	16.5	17	8.2	15.5	17.6	16.9	EM 2000					
																					194.2		
	51.7	13.9	14.1	17.8	9.6	15.5	15.4	12	15.8	10.6	51.7							EM 2000					
																					124.6		

FILENAME: SignDesigns
NORTH CAROLINA D.O.T. SIGN DETAIL

TYPE "A" SIGNS
(GROUND MOUNTED)