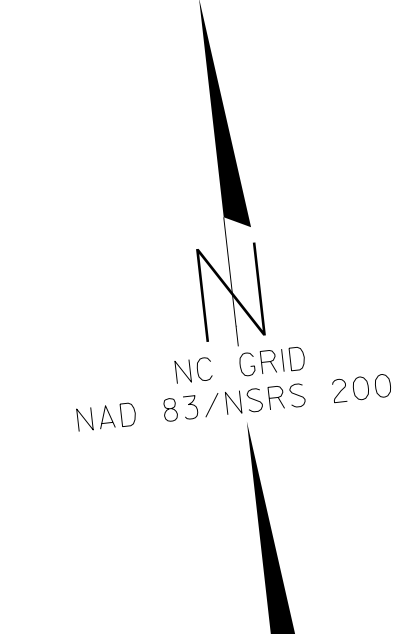
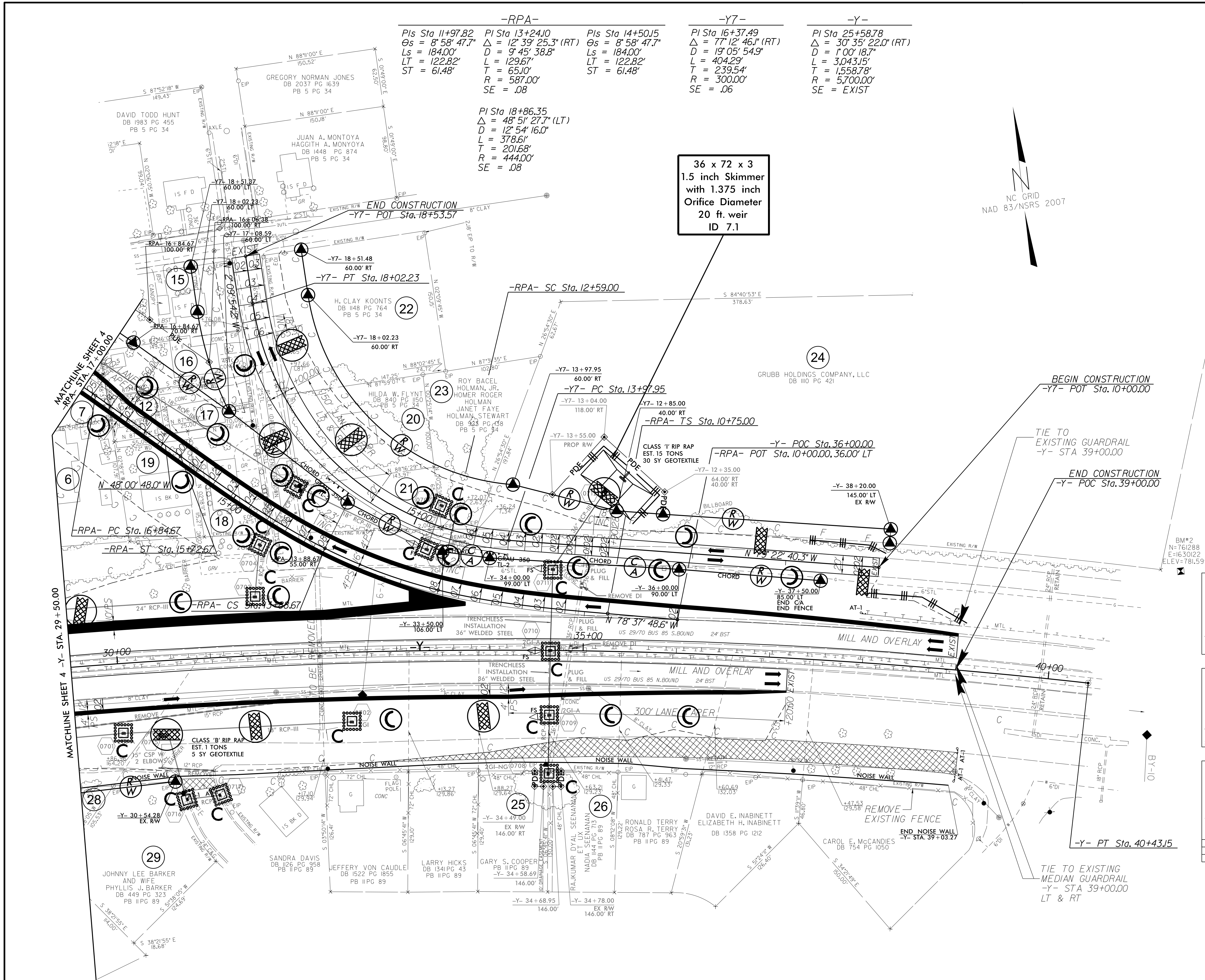


PROJECT REFERENCE NO.	SHEET NO.
B-3159	EC-11/CONST.7
RW SHEET NO.	
ROADWAY DESIGN ENGINEER	HYDRAULICS ENGINEER



-RPA-	-Y7-	-Y-
Pls Sta 11+97.82 $\Delta s = 8' 58' 47.7''$ $Ls = 184.00'$ $LT = 122.82'$ $ST = 61.48'$	Pls Sta 13+24.10 $\Delta = 12' 39' 25.3'' (RT)$ $D = 9' 45' 38.8''$ $L = 129.67'$ $T = 65.10'$ $R = 587.00'$ $SE = .08$	Pls Sta 14+50.15 $\Delta s = 8' 58' 47.7''$ $Ls = 184.00'$ $LT = 122.82'$ $ST = 61.48'$
	Pls Sta 16+37.49 $\Delta = 77' 12' 46.1'' (RT)$ $D = 19' 05' 54.9''$ $L = 404.29'$ $T = 239.54'$ $R = 300.00'$ $SE = .06$	Pls Sta 25+58.78 $\Delta = 30' 35' 22.0'' (RT)$ $D = 1' 00' 18.7''$ $L = 3,043.15'$ $T = 1,558.78'$ $R = 5,700.00'$ $SE = EXIST$
	Pls Sta 18+86.35 $\Delta = 48' 51' 27.7'' (LT)$ $D = 12' 54' 16.0''$ $L = 378.61'$ $T = 201.68'$ $R = 444.00'$ $SE = .08$	

- 6 THOMAS LEROY LEE DB 1758 PG 318 PB 5 PG 25
- 7 JOHN MILTON FRITTS BETTY E FRITTS DB 507 PG 744 PB 5 PG 25
- 12 EVA J. SHAW RALPH SHAW
- 15 VIVIAN E. BROADWAY DB 514 PG 359 PB 5 PG 25
- 16 MARGARET P. SMITH, WIDOW DB 1393 PG 1195 PB 5 PG 34
- 17 TODD, J. SURRETT DB 202 PG 2079 PB 5 PG 34
- 18 JAMES EARL LANIER DEBRA LANIER DB 1805 PG 1273 PB 5 PG 34
- 19 HEIH. TAM YIM CHAU WU TAM DB 1235 PG 948 PB 5 PG 34
- 21 ROBERT L. EVERHART, III
- 28 CHARLES L. SWICEGOOD DB 1253 PG 1985

