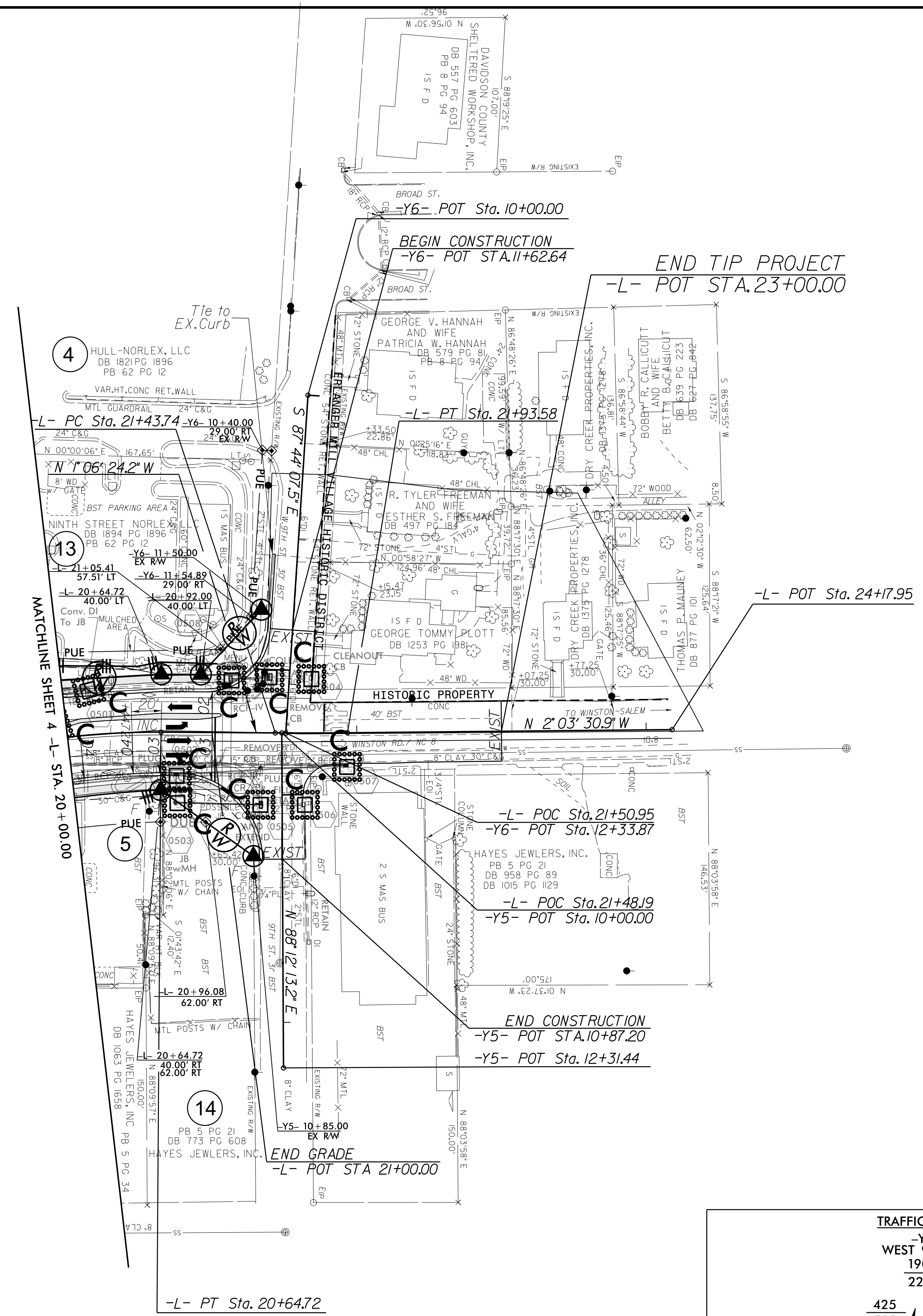


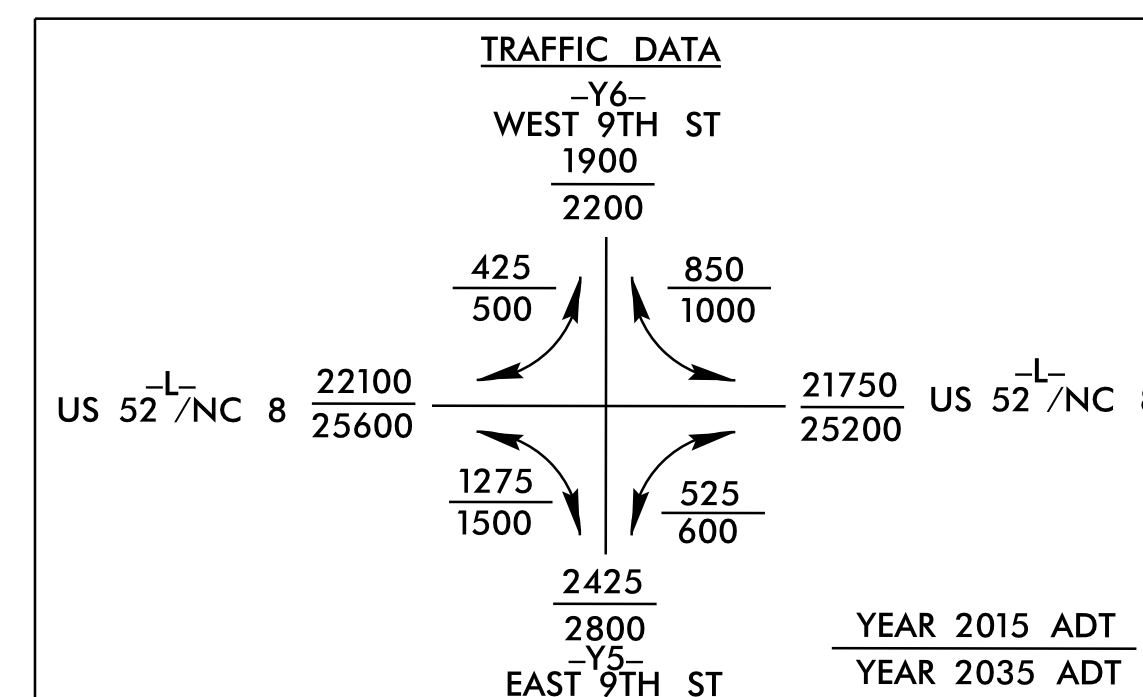
PROJECT REFERENCE NO. B-3159	SHEET NO. EC-9/CONST.5
RW SHEET NO.	
ROADWAY DESIGN ENGINEER	HYDRAULICS ENGINEER

NAD 83/NSRS 2007



-L-

PI Sta 19+97.13	PI Sta 21+68.66
$\Delta = 14^{\circ}36'42.4\" (RT)$	$\Delta = 0^{\circ}57'06.7\" (LT)$
$D = 10^{\circ}44'58.8\"$	$D = 1^{\circ}54'35.5\"$
$L = 135.93'$	$L = 49.84'$
$T = 68.33'$	$T = 24.92'$
$R = 533.00'$	$R = 3,000.00'$
SE = SEE PLANS	SE = SEE PLANS



ISLANDS  
SIDEWALK

NOTES:  
SEE SHEET 8 FOR -L- PROFILE  
SEE SHEET 2B-1 FOR INTERSECTION DETAIL