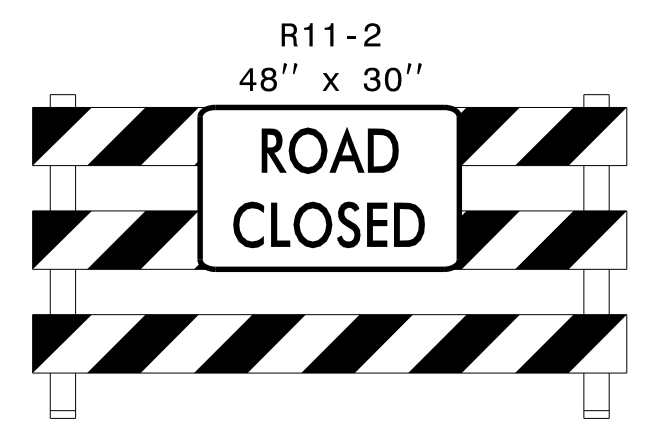


RAMP A AND RAMP C NOTE
 CONTRACTOR SHALL NOT WORK WITHIN 15' OF OPEN OUTSIDE LANE DURING INSIDE LANE CLOSURE OF I-85 BUSINESS



TYPE III BARRICADE
 WING BARRICADES AT INTERSECTION

USE FLAGGERS TO MAINTAIN PEDESTRIANS

CLOSE WITH
 PERMANENT BARRICADES

20

7TH ST

I-85 BUS

25

EXIST LOOP A

EXIST RAMP A

15

-Y- 29+24+/-
2' OFFSET

-Y- 29+96+/-
END PCB W/ CC
8' OFFSET

END 4' TEMP PVMT
-Y- 30+10+/-

LONG TERM LANE CLOSURE
SEE TMP-2F

PA

PI

15

-Y- 10'
10'

15

SEE TMP-8

MATCHLINE -Y- 34+00

LONG TERM
 LANE CLOSURE
 SEE TMP-2F

-Y- 21+57+/-
2' OFFSET

EXIST RAMP C

REMOVE EXISTING
 MEDIAN GUARDRAIL
 BEGIN -Y- 22+90+/-

REMOVE AND
 PAVE ISLANDS

RAMP C

BEG 4' TEMP PVMT
-Y- 20+60+/-

USE FLAGGERS TO MAINTAIN PEDESTRIANS

-Y- 27+97+/-
END PCB 2' OFFSET
END 4' TEMP PVMT

REMOVE EXISTING
 MEDIAN GUARDRAIL
 END -Y- 27+97+/-

10

EXIST RAMP D

I-85 BUS

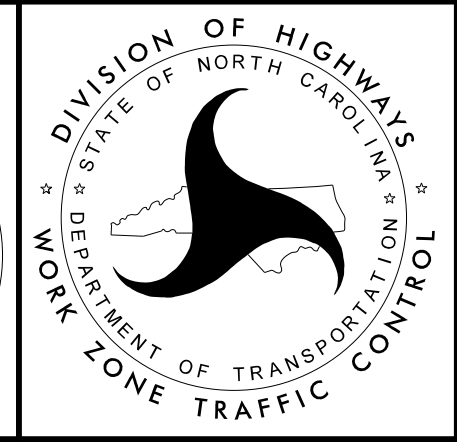
SEE TMP-2A AND TMP-2B FOR TEMPORARY SHORING NOTES

5 TEMPORARY SHORING	6 TEMPORARY SHORING	7 TEMPORARY SHORING
FROM -Y- 25+41+/- 6' RT TO -Y- 25+97+/- 6' RT	FROM -Y- 25+41+/- 6' LT TO -Y- 25+97+/- 6' LT	FROM -Y- 25+41+/- 6' LT TO -Y- 25+41+/- 6' RT
QUANTITY = 257.6 SF	QUANTITY = 257.6 SF	QUANTITY = 55.2 SF

SEE TMP-2D FOR CROSS WALKS AND TEMPORARY SIDEWALKS
 SEE TMP-8 FOR CROSS SECTIONS

APPROVED: *David Bisette*
 ECDC08CR7548C...

DATE: 7/7/2015



PHASE I

7/7/2015
 R:\TIP\Projects-B\B3159\TrafficControl\TCP\B3159_TC_TMP07.dgn
 User:derickardson