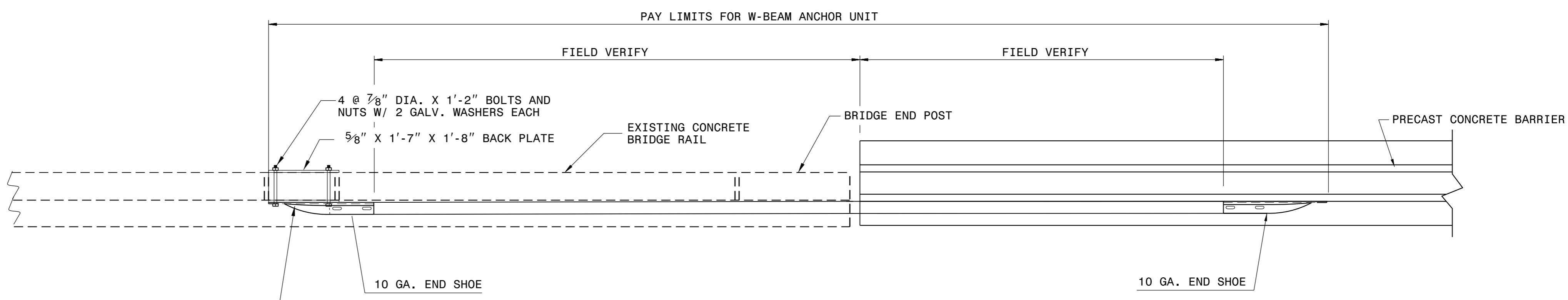
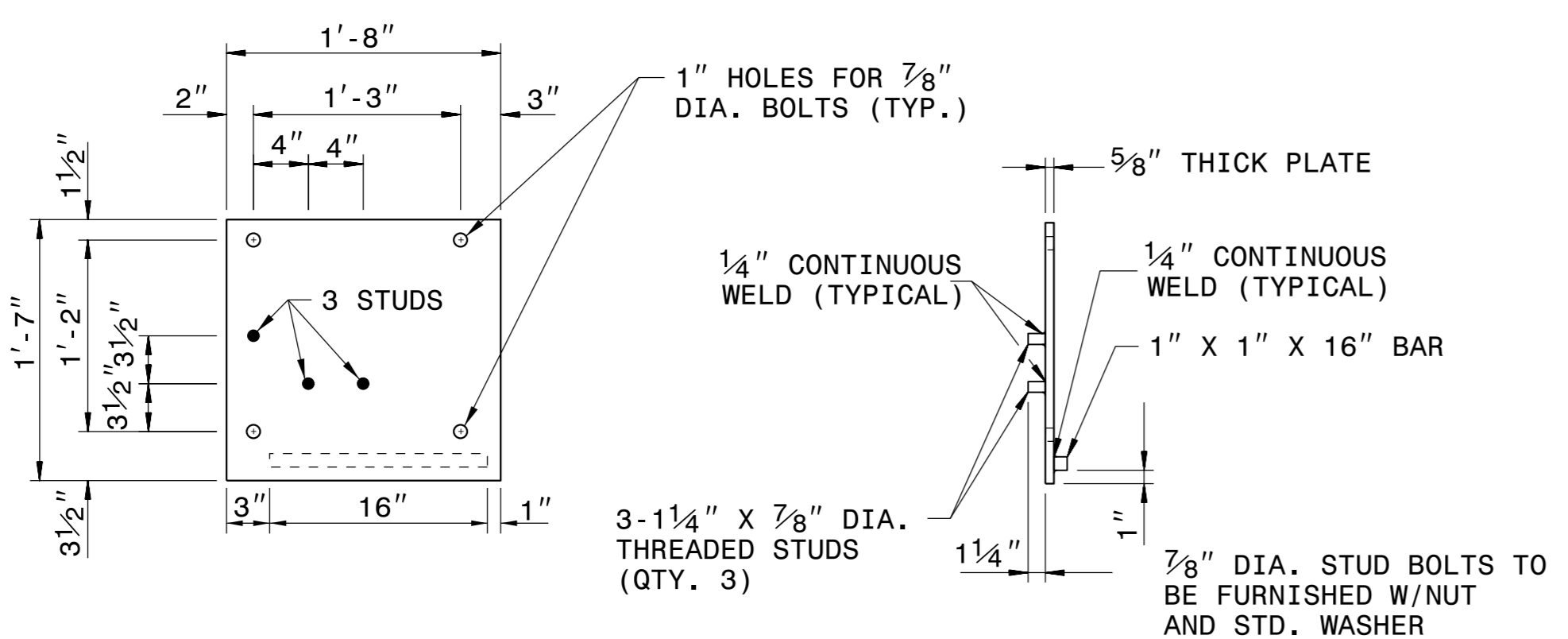


ELEVATION VIEW



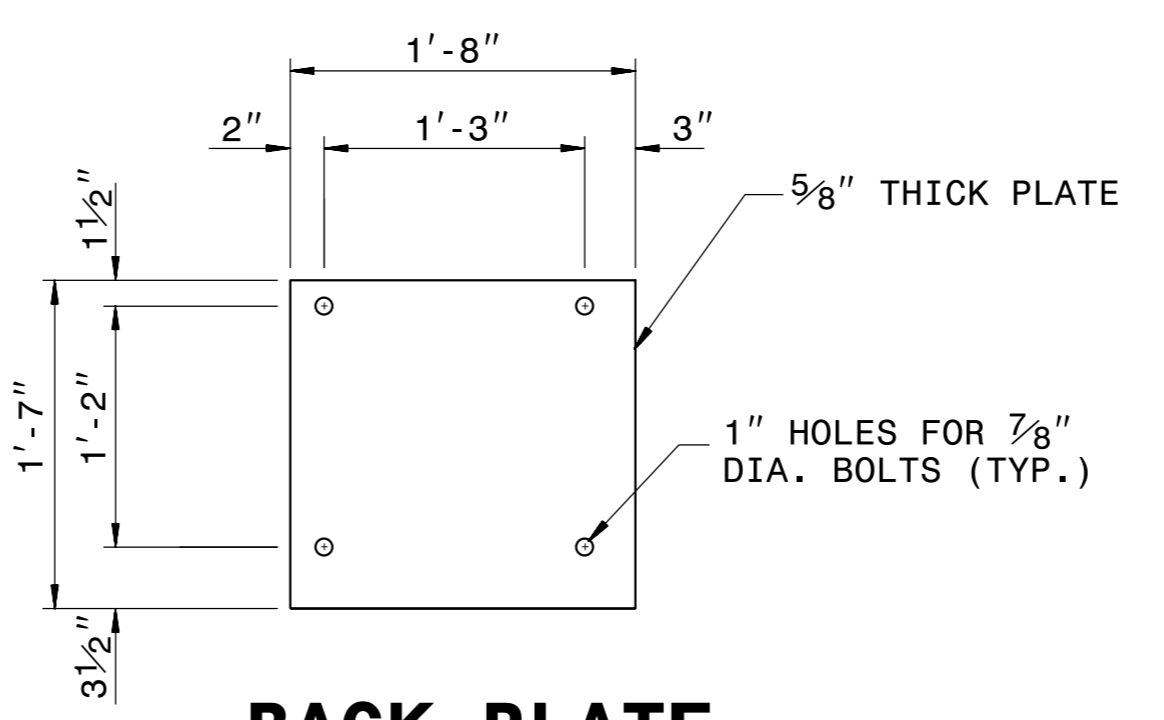
PLAN VIEW



FRONT VIEW

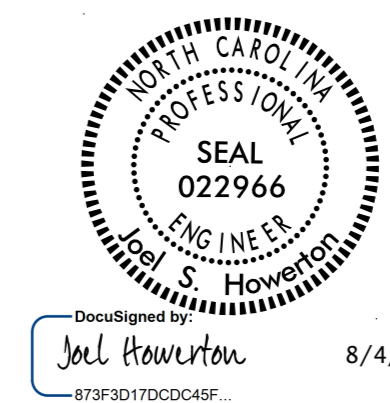
SIDE VIEW

FRONT PLATE



BACK PLATE

- GENERAL NOTES:
1. CONFORM NUTS, BOLTS, AND WASHERS TO THE REQUIREMENTS OF A.S.T.M. A-307 AND GALVANIZE IN ACCORDANCE WITH SECTION 1076 OF STAND. SPECS..
 2. TAP NUTS FOR THE 7/8" DIA. STUD BOLTS PLATE AFTER GALVANIZING SEE A.S.T.M. A-563.
 3. CONFORM PLATES TO THE REQUIREMENTS OF A.S.T.M. A-36 AND GALVANIZE AFTER FABRICATION IN ACCORDANCE WITH SECTION 1076 OF STAND. SPECS..
 4. DRILL ADDITIONAL FIELD HOLES IN STEEL RAIL AS DIRECTED BY THE ENGINEER.



CONTRACT STANDARDS AND DEVELOPMENT UNIT	
Office 919-707-6950	FAX 919-250-4119
ANCHOR UNIT TYPE W-BEAM	
ORIGINAL BY: C.O. CUEVAS	DATE: 8-99
MODIFIED BY:	DATE:
CHECKED BY:	DATE:
FILE SPEC.: ds182:\usr\cesar\english\anchor.dgn	