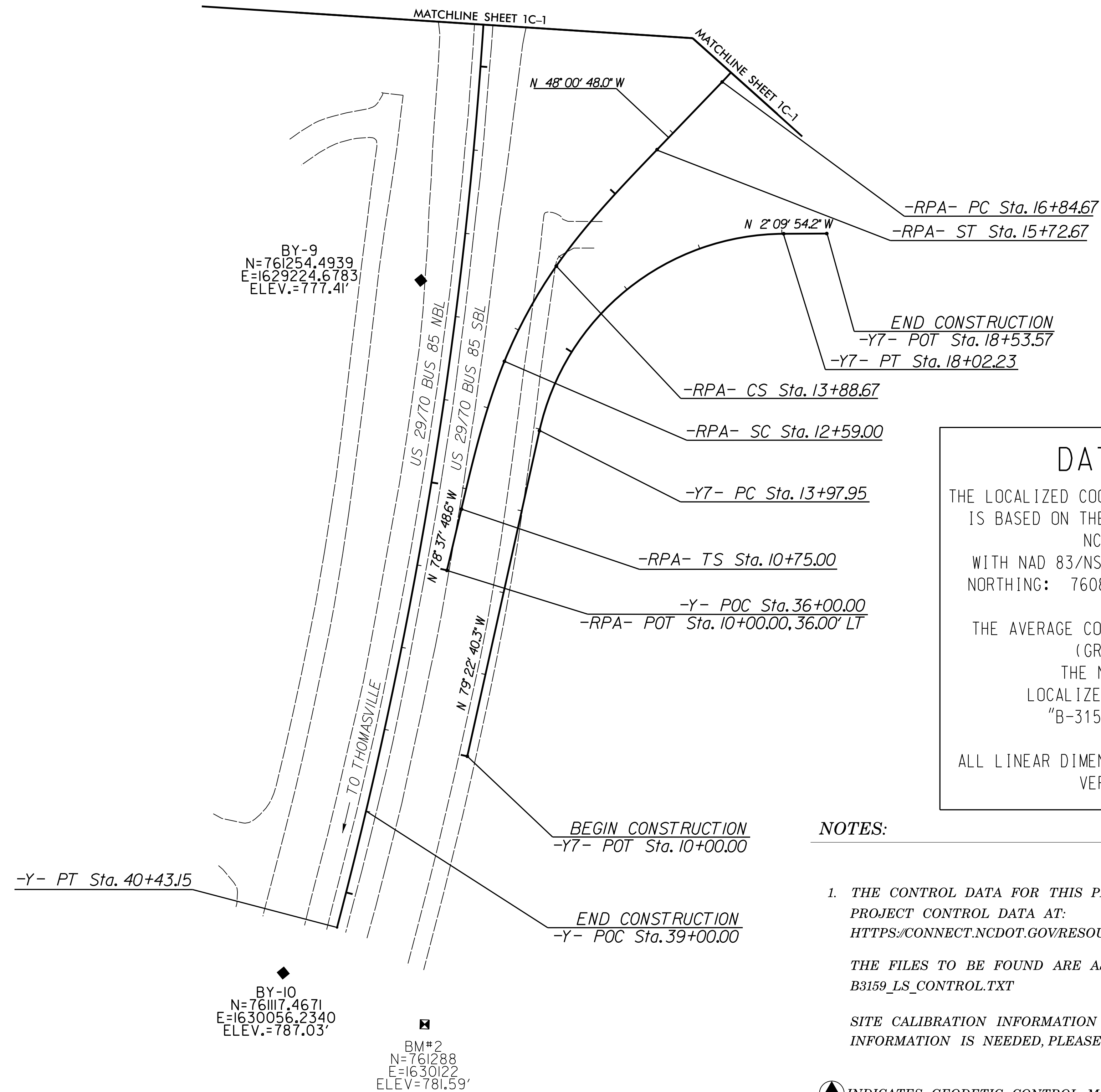
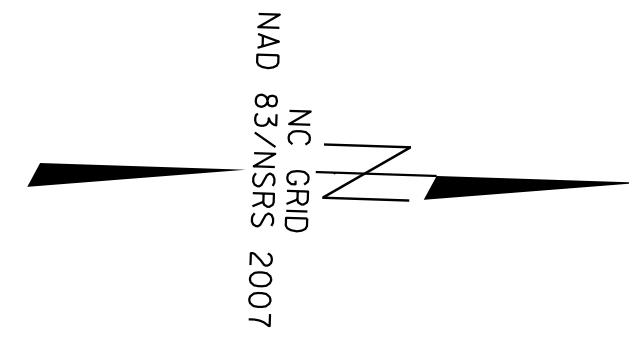


# SURVEY CONTROL SHEET B-3159

PROJECT REFERENCE NO. B-3159	SHEET NO. 1C-3
Location and Surveys	



BY-9  
N=761254.4939  
E=1629224.6783  
ELEV.=777.41'

BY-10  
N=761117.4671  
E=1630056.2340  
ELEV.=787.03'

BM#2  
N=761288  
E=1630122  
ELEV.=781.59'

### DATUM DESCRIPTION

THE LOCALIZED COORDINATE SYSTEM DEVELOPED FOR THIS PROJECT IS BASED ON THE STATE PLANE COORDINATES ESTABLISHED BY NCDOT FOR MONUMENT "B-3159-1" WITH NAD 83/NSRS 2007 STATE PLANE GRID COORDINATES OF NORTHING: 760804.9660(±) EASTING: 1628523.3410(±) ELEVATION: 788.31(±)

THE AVERAGE COMBINED GRID FACTOR USED ON THIS PROJECT (GROUND TO GRID) IS: 0.9998914

THE N.C. LAMBERT GRID BEARING AND LOCALIZED HORIZONTAL GROUND DISTANCE FROM "B-3159-1" TO -L- STATION 7+75.00 IS  
S 6° 55' 25.3" E 54.10'

ALL LINEAR DIMENSIONS ARE LOCALIZED HORIZONTAL DISTANCES  
VERTICAL DATUM USED IS NAVD 88

**NOTES:**

1. THE CONTROL DATA FOR THIS PROJECT CAN BE FOUND ELECTRONICALLY BY SELECTING PROJECT CONTROL DATA AT:  
[HTTPS://CONNECT.NCDOT.GOV/RESOURCES/LOCATION/](https://connect.ncdot.gov/resources/location)

THE FILES TO BE FOUND ARE AS FOLLOWS:  
B3159\_LS\_CONTROL.TXT

SITE CALIBRATION INFORMATION HAS NOT BEEN PROVIDED FOR THIS PROJECT. IF FURTHER INFORMATION IS NEEDED, PLEASE CONTACT THE LOCATION AND SURVEYS UNIT.

▲ INDICATES GEODETIC CONTROL MONUMENTS USED OR SET FOR HORIZONTAL PROJECT CONTROL BY THE NCDOT LOCATION AND SURVEYS UNIT.

PROJECT CONTROL ESTABLISHED USING GLOBAL POSITIONING SYSTEM.

NOTE: DRAWING NOT TO SCALE