

**This electronic collection of documents is provided  
for the convenience of the user  
and is Not a Certified Document –**

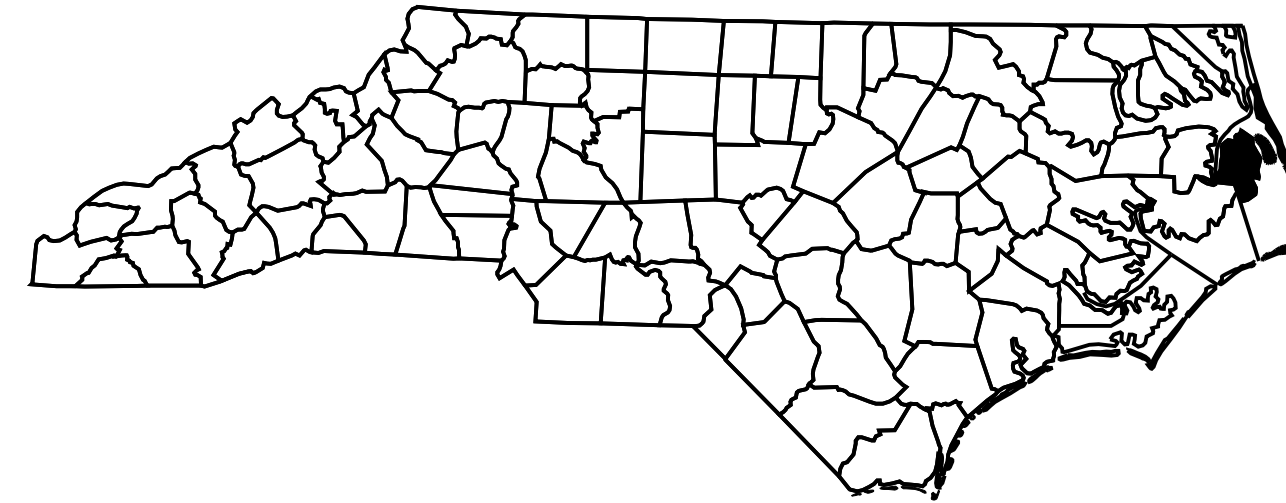
**The documents contained herein were originally issued  
and sealed by the individuals whose names and license  
numbers appear on each page, on the dates appearing  
with their signature on that page.**

**This file or an individual page  
shall not be considered a certified document.**

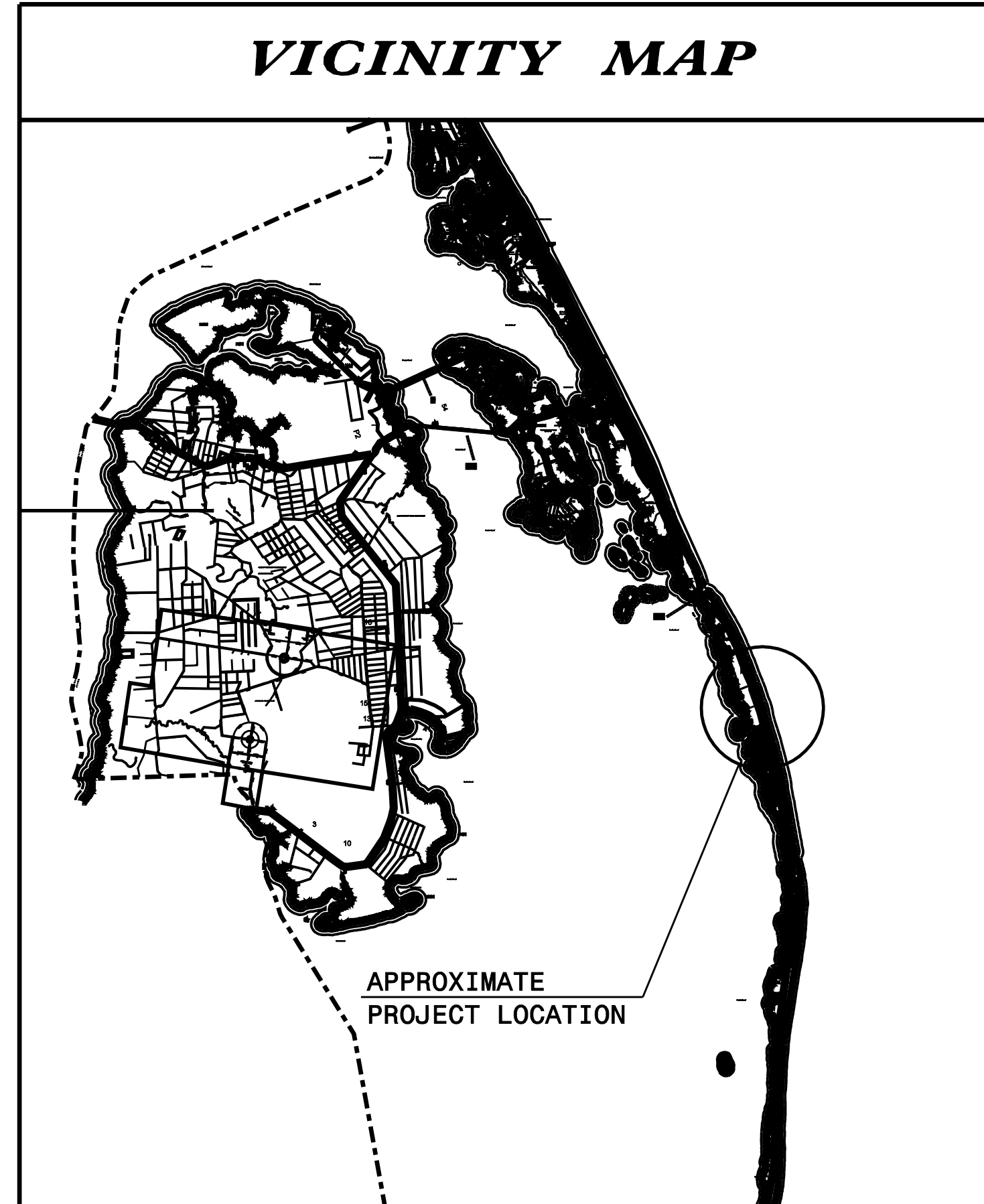
STATE OF NORTH CAROLINA  
DIVISION OF HIGHWAYS

**TRANSPORTATION MANAGEMENT PLAN**

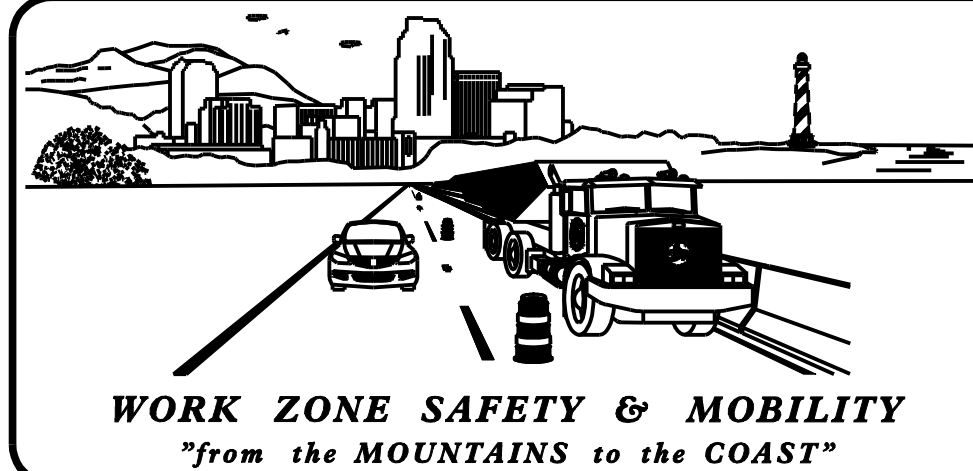
**DARE COUNTY**



**VICINITY MAP**

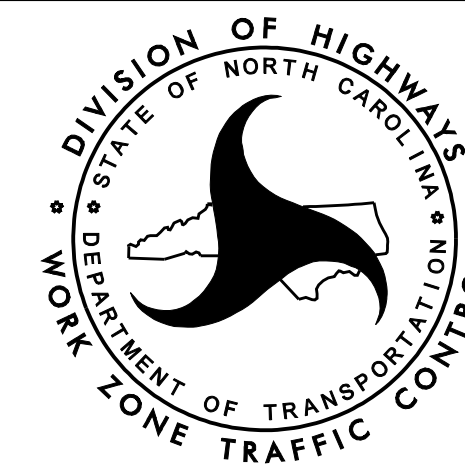


APPROXIMATE  
PROJECT LOCATION



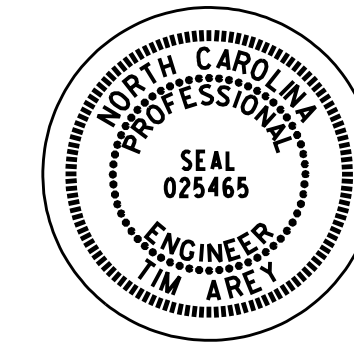
**N.C.D.O.T. WORK ZONE TRAFFIC CONTROL**  
1561 MAIL SERVICE CENTER (MSC) RALEIGH, NC 27699-1561  
750 N. GREENFIELD PARKWAY, GARNER, NC 27529 (DELIVERY)  
PHONE: (919) 773-2800 FAX: (919) 771-2745

J. S. BOURNE, P.E. STATE TRAFFIC MANAGEMENT ENGINEER  
STEVE KITE, P.E. TRAFFIC CONTROL PROJECT ENGINEER  
TRAFFIC CONTROL PROJECT DESIGN ENGINEER  
TRAFFIC CONTROL DESIGN ENGINEER



APPROVED: *[Signature]*  
DATE: 8/28/2015

SEAL



**INDEX OF SHEETS**

<u>SHEET NO.</u>	<u>TITLE</u>
TMP-1	TITLE SHEET, VICINITY MAP AND INDEX OF SHEETS
TMP-1A	LIST OF APPLICABLE ROADWAY STANDARD DRAWINGS, AND LEGEND
TMP-2	TRANSPORTATION OPERATIONS PLAN: (MANAGEMENT STRATEGIES, GENERAL NOTES)
TMP-3	TEMPORARY TRAFFIC CONTROL PHASING
TMP-4 THRU TMP-7	TEMPORARY TRAFFIC CONTROL PHASE I DETAILS
TMP-8 THRU TMP-11	TEMPORARY TRAFFIC CONTROL PHASE II DETAILS

SHEET NO.  
TMP-1

**B-2500AB**

**TIP PROJECT:**

# ROADWAY STANDARD DRAWINGS

THE FOLLOWING ROADWAY STANDARDS AS SHOWN IN "ROADWAY STANDARD DRAWINGS" - PROJECT SERVICES UNIT - N.C. DEPARTMENT OF TRANSPORTATION - RALEIGH, N.C., DATED JANUARY 2012 ARE APPLICABLE TO THIS PROJECT AND BY REFERENCE HEREBY ARE CONSIDERED A PART OF THESE PLANS:

STD. NO.	TITLE
1101.01	WORK ZONE WARNING SIGNS
1101.02	TEMPORARY LANE CLOSURES
1101.04	TEMPORARY SHOULDER CLOSURES
1101.05	WORK ZONE VEHICLE ACCESSES
1101.11	TRAFFIC CONTROL DESIGN TABLES
1110.01	STATIONARY WORK ZONE SIGNS
1110.02	PORTABLE WORK ZONE SIGNS
1115.01	FLASHING ARROW BOARDS
1130.01	DRUMS
1135.01	CONES
1145.01	BARRICADES
1150.01	FLAGGING DEVICES
1160.01	TEMPORARY CRASH CUSHION
1165.01	WORK VEHICLE LIGHTING SYSTEMS AND TMA DELINEATION
1170.01	PORTABLE CONCRETE BARRIER
1180.01	SKINNY - DRUM
1205.01	PAVEMENT MARKINGS - LINE TYPES AND OFFSETS
1205.02	PAVEMENT MARKINGS - TWO LANE AND MULTILANE ROADWAYS
1205.08	PAVEMENT MARKINGS - SYMBOLS AND WORD MESSAGES
1250.01	RAISED PAVEMENT MARKERS - INSTALLATION SPACING
1251.01	RAISED PAVEMENT MARKERS - (PERMANENT AND TEMPORARY)
1261.01	GUARDRAIL AND BARRIER DELINEATORS - INSTALLATION SPACING
1261.02	GUARDRAIL AND BARRIER DELINEATORS - TYPES AND MOUNTING
1262.01	GUARDRAIL END DELINEATION

# LEGEND

## GENERAL

- DIRECTION OF TRAFFIC FLOW
- DIRECTION OF PEDESTRIAN TRAFFIC FLOW
- EXIST. PVMT.
- NORTH ARROW
- PROPOSED PVMT.
- TEMP. SHORING (LOCATION PURPOSES ONLY)
- WORK AREA
- REMOVAL
- TEMPORARY PAVEMENT
- ON-GOING CONSTRUCTION

## PAVEMENT MARKINGS

- EXISTING LINES
- TEMPORARY LINES

## TRAFFIC CONTROL DEVICES

- BARRICADE (TYPE III)
- CONE
- DRUM SKINNY DRUM TUBULAR MARKER
- TEMPORARY CRASH CUSHION
- FLASHING ARROW BOARD
- FLAGGER
- LAW ENFORCEMENT
- TRUCK MOUNTED ATTENUATOR (TMA)
- CHANGEABLE MESSAGE SIGN

## TEMPORARY SIGNING

- PORTABLE SIGN
- STATIONARY SIGN
- STATIONARY OR PORTABLE SIGN

## PAVEMENT MARKERS

- CRYSTAL/CRYSTAL
- CRYSTAL/RED
- YELLOW/YELLOW

## PAVEMENT MARKING SYMBOLS

- PAVEMENT MARKING SYMBOLS

## TEMPORARY PAVEMENT MARKING

### PAVEMENT MARKINGS PAINT (4")

- PA WHITE EDGELINE
- PB YELLOW EDGELINE
- PI YELLOW DOUBLE CENTER

### PAINT (24")

- P2 WHITE STOPBAR

### PAINT SYMBOLS

- QA LEFT TURN ARROW
- QI ALPHANUMERIC CHARACTER

<p>PLAN PREPARED IN THE OFFICE OF:</p> <p><b>PROGRESSIVE</b> DESIGN GROUP, INC.</p> <p>ENGINEERS • CONSULTANTS</p>	<p>APPROVED:  DATE: 8/28/2015</p> <p>SEAL</p> <p></p>	<p></p>	<p>ROADWAY STANDARD DRAWINGS &amp; LEGEND</p>
--	---	---------	---



**MANAGEMENT STRATEGIES**

THIS PROJECT CONSISTS OF AN ON-SITE DETOUR CONSTRUCTED WITH TEMPORARY PAVEMENT. PORTABLE CONCRETE BARRIER WILL BE UTILIZED TO SEPARATE TRAFFIC FROM THE MAJORITY OF THE WORK ZONE AFTER TRAFFIC IS SHIFTED ONTO THE ON SITE DETOUR. ALTERNATING LANE CLOSURES WILL BE NECESSARY FOR TIE IN CONSTRUCTION OF THE PROPOSED -L- ALIGNMENT TO EXISTING -L-.

**GENERAL NOTES**

CHANGES MAY BE REQUIRED WHEN PHYSICAL DIMENSIONS IN THE DETAIL DRAWINGS, STANDARD DETAILS AND ROADWAY DETAILS ARE NOT ATTAINABLE TO MEET FIELD CONDITIONS, OR RESULT IN DUPLICATE, OR UNDESIRE OVERLAPPING OF DEVICES. MODIFICATION MAY INCLUDE: MOVING, SUPPLEMENTING, COVERING OR REMOVAL OF DEVICES, AS DIRECTED BY THE ENGINEER.

THE FOLLOWING GENERAL NOTES APPLY AT ALL TIMES FOR THE DURATION OF THE CONSTRUCTION PROJECT, EXCEPT WHEN OTHERWISE NOTED IN THE PLAN, OR DIRECTED BY THE ENGINEER.

**TIME RESTRICTIONS**

A) DO NOT CLOSE OR NARROW TRAVEL LANES AS FOLLOWS:

ROAD NAME	DAY AND TIME RESTRICTIONS
-L- (NC 12)	SEPTEMBER 15 THRU JUNE 13 FRIDAY 3:00 PM TO MONDAY 7:00 AM
	JUNE 14 THRU SEPTEMBER 14 TUESDAY THRU THURSDAY 6:00 AM TO 8:00 PM FRIDAY 6:00 AM TO MONDAY 8:00 PM

B) DO NOT CLOSE OR NARROW TRAVEL LANES DURING HOLIDAYS AND SPECIAL EVENTS AS FOLLOWS:

ROAD NAME	HOLIDAY
-L- (NC 12)	<ol style="list-style-type: none"> <li>FOR ANY UNEXPECTED OCCURRENCE THAT CREATES UNUSUALLY HIGH TRAFFIC VOLUMES, AS DIRECTED BY THE ENGINEER.</li> <li>FOR NEW YEAR'S, BETWEEN THE HOURS OF 6:00 A.M. DECEMBER 31st TO 8:00 P.M. JANUARY 2ND. IF NEW YEAR'S DAY IS ON A FRIDAY, SATURDAY, SUNDAY, OR MONDAY THEN UNTIL 8:00 P.M. THE FOLLOWING TUESDAY.</li> <li>FOR EASTER, BETWEEN THE HOURS OF 6:00 A.M. THURSDAY AND 8:00 P.M. MONDAY.</li> <li>FOR MEMORIAL DAY, BETWEEN THE HOURS OF 6:00 A.M. FRIDAY TO 8:00 P.M. TUESDAY.</li> <li>FOR INDEPENDENCE DAY, BETWEEN THE HOURS OF 6:00 A.M. THE DAY BEFORE INDEPENDENCE DAY AND 8:00 P.M. THE DAY AFTER INDEPENDENCE DAY.  IF INDEPENDENCE DAY IS ON A FRIDAY, SATURDAY, SUNDAY OR MONDAY THEN BETWEEN THE HOURS OF 6:00 A.M. THE THURSDAY BEFORE INDEPENDENCE DAY AND 8:00 P.M. THE TUESDAY AFTER INDEPENDENCE DAY.</li> <li>FOR LABOR DAY, BETWEEN THE HOURS OF 6:00 A.M. FRIDAY AND 8:00 P.M. TUESDAY.</li> <li>FOR THANKSGIVING DAY, BETWEEN THE HOURS OF 6:00 A.M. TUESDAY TO 8:00 P.M. MONDAY.</li> <li>FOR CHRISTMAS, BETWEEN THE HOURS OF 6:00 A.M. THE FRIDAY BEFORE THE WEEK OF CHRISTMAS DAY AND 8:00 P.M. THE FOLLOWING TUESDAY AFTER THE WEEK OF CHRISTMAS.</li> </ol>

C) DO NOT STOP TRAFFIC AS FOLLOWS:

ROAD NAME	DAY AND TIME RESTRICTIONS	DURATION AND OPERATION
-L- (NC 12)	SEPTEMBER 15 THRU JUNE 13 FRIDAY 3:00 PM TO MONDAY 7:00 AM	30 MINS. FOR DELIVERIES
	JUNE 14 THRU SEPTEMBER 14 TUESDAY THRU THURSDAY 6:00 AM TO 8:00 PM FRIDAY 6:00 AM TO MONDAY 8:00 PM	

**LANE AND SHOULDER CLOSURE REQUIREMENTS**

- D) REMOVE LANE CLOSURE DEVICES FROM THE LANE WHEN WORK IS NOT BEING PERFORMED BEHIND THE LANE CLOSURE OR WHEN A LANE CLOSURE IS NO LONGER NEEDED, OR AS DIRECTED BY THE ENGINEER.
- E) WHEN PERSONNEL AND/OR EQUIPMENT ARE WORKING WITHIN 15 FT OF AN AN OPEN TRAVEL LANE, CLOSE THE NEAREST OPEN SHOULDER USING ROADWAY STANDARD DRAWING NO. 1101.04 UNLESS THE WORK AREA IS PROTECTED BY BARRIER OR GUARDRAIL OR A LANE CLOSURE IS INSTALLED.
- F) WHEN PERSONNEL AND/OR EQUIPMENT ARE WORKING ON THE SHOULDER ADJACENT TO AN UNDIVIDED FACILITY AND WITHIN 5 FT OF AN OPEN TRAVEL LANE, CLOSE THE NEAREST OPEN TRAVEL LANE USING ROADWAY STANDARD DRAWING NO. 1101.02 UNLESS THE WORK AREA IS PROTECTED BY BARRIER OR GUARDRAIL.
- G) WHEN PERSONNEL AND/OR EQUIPMENT ARE WORKING ON THE SHOULDER ADJACENT TO A DIVIDED FACILITY AND WITHIN 10 FT OF AN OPEN TRAVEL LANE, CLOSE THE NEAREST OPEN TRAVEL LANE USING ROADWAY STANDARD DRAWING NO. 1101.02 UNLESS THE WORK AREA IS PROTECTED BY BARRIER OR GUARDRAIL.
- H) DO NOT WORK SIMULTANEOUSLY WITHIN 15 FT ON BOTH SIDES OF AN OPEN TRAVELWAY, RAMP OR LOOP WITHIN THE SAME LOCATION UNLESS PROTECTED WITH GUARDRAIL OR BARRIER.

**PAVEMENT EDGE DROP OFF REQUIREMENTS**

- I) BACKFILL AT A 6:1 SLOPE UP TO THE EDGE AND ELEVATION OF EXISTING PAVEMENT IN AREAS ADJACENT TO AN OPENED TRAVEL LANE THAT HAS AN EDGE OF PAVEMENT DROP-OFF AS FOLLOWS:  
  
BACKFILL DROP-OFFS THAT EXCEED 2 INCHES ON ROADWAYS WITH POSTED SPEED LIMITS OF 45 MPH OR GREATER.  
  
BACKFILL DROP-OFFS THAT EXCEED 3 INCHES ON ROADWAYS WITH POSTED SPEED LIMITS LESS THAN 45 MPH.  
  
BACKFILL WITH SUITABLE COMPACTED MATERIAL, AS APPROVED BY THE ENGINEER, AT NO EXPENSE TO THE DEPARTMENT.
- J) DO NOT EXCEED A DIFFERENCE OF 2 INCHES IN ELEVATION BETWEEN OPEN LANES OF TRAFFIC FOR NOMINAL LIFTS OF 1.5 INCHES. INSTALL ADVANCE WARNING "UNEVEN LANES" SIGNS (W8-11) 1000 FT IN ADVANCE AND A MINIMUM OF EVERY HALF MILE THROUGHOUT THE UNEVEN AREA.

**TRAFFIC PATTERN ALTERATIONS**

- K) NOTIFY THE ENGINEER TWENTY ONE (21) CALENDAR DAYS PRIOR TO ANY TRAFFIC PATTERN ALTERATION.

**SIGNING**

- L) INSTALL ADVANCE WORK ZONE WARNING SIGNS WHEN WORK IS WITHIN 40 FT FROM THE EDGE OF TRAVEL LANE AND NO MORE THAN THREE (3) DAYS PRIOR TO THE BEGINNING OF CONSTRUCTION.
- M) ENSURE ALL NECESSARY SIGNING IS IN PLACE PRIOR TO ALTERING ANY TRAFFIC PATTERN.

**TRAFFIC BARRIER**

- N) INSTALL TEMPORARY BARRIER ACCORDING TO THE TRAFFIC CONTROL PLANS A MAXIMUM OF TWO (2) WEEKS PRIOR TO BEGINNING WORK IN ANY LOCATION. ONCE TEMPORARY BARRIER IS INSTALLED AT ANY LOCATION, PROCEED IN A CONTINUOUS MANNER TO COMPLETE THE PROPOSED WORK IN THAT LOCATION UNLESS OTHERWISE STATED IN THE TRAFFIC CONTROL PLANS OR AS DIRECTED BY THE ENGINEER.

DO NOT PLACE BARRIER DIRECTLY ON ANY SURFACE OTHER THAN ASPHALT OR CONCRETE.

ONCE TEMPORARY BARRIER IS INSTALLED AT ANY LOCATION AND NO WORK IS PERFORMED BEHIND THE TEMPORARY BARRIER FOR A PERIOD LONGER THAN TWO (2) MONTHS, REMOVE/RESET TEMPORARY BARRIER AT NO COST TO THE DEPARTMENT UNLESS OTHERWISE STATED IN THE TRAFFIC CONTROL PLANS, TEMPORARY BARRIER IS PROTECTING A HAZARD, OR AS DIRECTED BY THE ENGINEER.

INSTALL TEMPORARY BARRIER WITH THE TRAFFIC FLOW, BEGINNING WITH THE UPSTREAM SIDE OF TRAFFIC. REMOVE TEMPORARY BARRIER AGAINST THE TRAFFIC FLOW, BEGINNING WITH THE DOWNSTREAM SIDE OF TRAFFIC.

INSTALL AND SPACE DRUMS NO GREATER THAN TWICE THE POSTED SPEED LIMIT (MPH) TO CLOSE OR KEEP THE SECTION OF THE ROADWAY CLOSED UNTIL THE TEMPORARY BARRIER CAN BE PLACED OR AFTER THE TEMPORARY BARRIER IS REMOVED.

- O) PROTECT THE APPROACH END OF MOVABLE/PORTABLE CONCRETE BARRIER AT ALL TIMES DURING THE INSTALLATION AND REMOVAL OF THE BARRIER BY EITHER A TRUCK MOUNTED IMPACT ATTENUATOR (MAXIMUM 72 HOURS) OR A TEMPORARY CRASH CUSHION.

PROTECT THE APPROACH END OF MOVABLE/PORTABLE CONCRETE BARRIER FROM ONCOMING TRAFFIC AT ALL TIMES BY A TEMPORARY CRASH CUSHION UNLESS THE APPROACH END OF MOVABLE/PORTABLE CONCRETE BARRIER IS OFFSET FROM ONCOMING TRAFFIC AS FOLLOWS OR AS SHOWN IN THE PLANS:

POSTED SPEED LIMIT	MINIMUM OFFSET
40 OR LESS	15 FT
45 - 50	20 FT
55	25 FT
60 MPH or HIGHER	30 FT

**TRAFFIC CONTROL DEVICES**

- P) SPACE CHANNELIZING DEVICES IN WORK AREAS NO GREATER THAN TWICE THE POSTED SPEED LIMIT (MPH), EXCEPT 10 FT ON-CENTER IN RADII, AND 3 FT OFF THE EDGE OF AN OPEN TRAVELWAY, WHEN LANE CLOSURES ARE NOT IN EFFECT. WHEN SKINNY DRUMS ARE ALLOWED, REFER TO SECTION 1180 OF STANDARD SPECIFICATIONS FOR ROADS AND STRUCTURES OR AS SHOWN IN THE PLANS.
- Q) PLACE TYPE III BARRICADES, WITH "ROAD CLOSED" SIGN R11-2 ATTACHED, OF SUFFICIENT LENGTH TO CLOSE ENTIRE ROADWAY.
- R) PLACE ADDITIONAL SETS OF THREE CHANNELIZING DEVICES PERPENDICULAR TO THE EDGE OF TRAVELWAY ON 500 FT CENTERS WHEN UNOPENED LANES ARE CLOSED TO TRAFFIC.

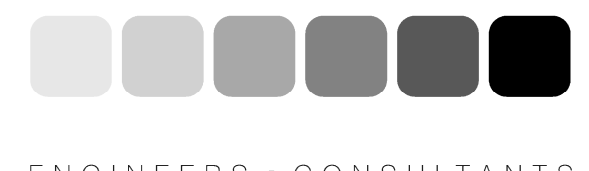
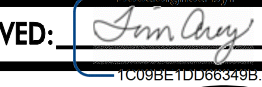
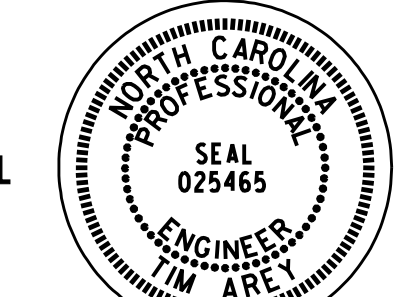

**PAVEMENT MARKINGS AND MARKERS**

- S) INSTALL TEMPORARY PAVEMENT MARKINGS AND TEMPORARY PAVEMENT MARKERS ON INTERIM LAYERS OF PAVEMENT AS FOLLOWS:  
  

ROAD NAME	MARKING	MARKER
-L- (NC 12)	PAINT	TEMPORARY RAISED (20' SPACING)
- T) PLACE ONE APPLICATION OF PAINT FOR TEMPORARY TRAFFIC PATTERNS. PLACE A SECOND APPLICATION OF PAINT SIX (6) MONTHS AFTER THE INITIAL APPLICATION AND EVERY SIX MONTHS AS DIRECTED BY THE ENGINEER.
- U) TIE PROPOSED PAVEMENT MARKING LINES TO EXISTING PAVEMENT MARKING LINES.
- V) REMOVE/REPLACE ANY CONFLICTING/DAMAGED PAVEMENT MARKINGS AND MARKERS BY THE END OF EACH DAY'S OPERATION.

**MISCELLANEOUS**

- W) WORK ZONE SIGN SUPPORTS FOR STATIONARY WORK ZONE SIGNS AND SHALL BE 4"x4" WOOD POSTS IN ACCORDANCE WITH SECTION 1110 AND ARTICLE 1089-2 OF THE 2012 STANDARD SPECIFICATIONS.
- X) DRUMS SHALL BE TIRE BALLASTED IN ACCORDANCE WITH SECTION 1130 AND ARTICLE 1089-5 OF THE 2012 STANDARD SPECIFICATIONS WITH DOUBLE TIRE BALLASTS.

<p>PLAN PREPARED IN THE OFFICE OF:</p> <p><b>PROGRESSIVE</b> DESIGN GROUP, INC.</p>  <p>ENGINEERS • CONSULTANTS</p>	<p>APPROVED:  DATE: 8/28/2015</p> <p>SEAL</p> 		<p><b>TRANSPORTATION</b> <b>MANAGEMENT PLAN</b> <b>GENERAL NOTES</b></p>
--	--	---	--



# PHASING

PROJ. REFERENCE NO.	SHEET NO.
B-2500AB	TMP-3

## PHASE I

STEP 1: INSTALL WORK ZONE ADVANCE WARNING SIGNS ON -L- AS SHOWN IN ROADWAY STANDARD DRAWING NO. 1101.01.

STEP 2: USING ROADWAY STANDARD DRAWING NO. 1101.02, SHEET 1 OF 15, CONSTRUCT THE TEMPORARY -DETOUR- ALIGNMENT UP TO THE EDGE AND ELEVATION OF EXISTING -L- IN THE LOCATIONS SHOWN ON SHEETS TMP-5 AND TMP-6.

MILL, WEDGE AND CONSTRUCT PROPOSED -ELN- IN THE LOCATIONS SHOWN IN THE ROADWAY DESIGN PLANS.

IDENTIFY LOW POINTS WITHIN THE PROJECT LIMITS THAT WILL AFFECT THE PHASE II TRAFFIC PATTERN AS DESCRIBED ON SHEET TMP-4.

## PHASE II

STEP 1: COMPLETE THE FOLLOWING USING ROADWAY STANDARD DRAWING NO. 1101.02, SHEET 1 OF 15:

A) TIE IN THE -DETOUR- ALIGNMENT TO EXISTING -L-. INSTALL PAINT PAVEMENT MARKINGS AND TEMPORARY RAISED MARKERS IN THE LOCATIONS SHOWN ON SHEETS TMP-8 THRU TMP-11. PLACE TEMPORARY RAISED MARKERS AT 20' SPACING ALONG THE DOUBLE YELLOW AND BOTH WHITE EDGE LINES FROM STA. 16+50+/- -DETOUR- TO STA. 64+00+/- -DETOUR- AS SHOWN ON SHEETS TMP-9 AND TMP-10 AND SWITCH -L- TRAFFIC INTO THE PATTERN SHOWN ON SHEETS TMP-8 THRU TMP-11. ENSURE THAT BOTH CHANGEABLE MESSAGE SIGNS AND THE WORK ZONE WARNING SIGNS SHOWN ON SHEETS TMP-9 AND TMP-10 ARE IN PLACE AND THAT THE STORM WATER LOW POINTS HAVE BEEN ADEQUATELY TREATED AS DESCRIBED ON SHEET TMP-8 PRIOR TO REMOVING THE LANE CLOSURE. INSTALL DRUMS AND TYPE III BARRICADES AS SHOWN ON SHEETS TMP-8 AND TMP-11.

B) INSTALL PORTABLE CONCRETE BARRIER AND TEMPORARY CRASH CUSHIONS ALONG THE SOUTHBOUND LANE OF -DETOUR- IN THE LOCATIONS SHOWN ON SHEETS TMP-9 AND TMP-10.

STEP 2: USING ROADWAY STANDARD DRAWING NO. 1101.02, SHEET 1 OF 15, AS NECESSARY, CONSTRUCT THE PROPOSED -L- BRIDGE, RETAINING WALLS AND ROADWAY APPROACHES UP TO BUT NOT INCLUDING THE FINAL LAYER OF SURFACE COURSE IN THE LOCATIONS SHOWN ON SHEETS TMP-9 AND TMP-10.

REMOVE THE TEMPORARY DETOUR FROM THE B-2500A PROJECT IN THE LOCATIONS SHOWN IN THE ROADWAY DESIGN PLANS.

STEP 3: AWAY FROM TRAFFIC, INSTALL TEMPORARY PAINT PAVEMENT MARKINGS AND MARKERS ALONG -L- IN THE FINAL PATTERN.

STEP 4: WORK IN A CONTINUOUS MANNER USING ROADWAY STANDARD DRAWING NO. 1101.02, SHEET 1 OF 15, TO COMPLETE THE FOLLOWING:

A) TIE IN PROPOSED SOUTHBOUND -L- TO EXISTING -L- UP TO BUT NOT INCLUDING THE FINAL LAYER OF SURFACE COURSE AND SWITCH -L- TRAFFIC ONTO SOUTHBOUND -L- IN A ONE LANE TWO WAY TRAFFIC PATTERN.

B) TIE IN PROPOSED NORTHBOUND -L- TO EXISTING -L- UP TO BUT NOT INCLUDING THE FINAL LAYER OF SURFACE COURSE, INSTALL THE REMAINING TEMPORARY PAINT PAVEMENT MARKINGS AND MARKERS IN THE TIE-IN AREAS OF -L- IN THE FINAL PATTERN AND OPEN PROPOSED -L- TO THE FINAL TRAFFIC PATTERN.

STEP 5: REMOVE THE EXISTING BRIDGE AND ANY REMAINING DETOUR PAVEMENT OR -ELN PAVEMENT IDENTIFIED IN THE ROADWAY DESIGN PLANS.

STEP 6: USING ROADWAY STANDARD DRAWING NO. 1101.02, SHEET 1 OF 15, PLACE THE FINAL LAYER OF SURFACE COURSE INCLUDING OGFC, PAVEMENT MARKINGS AND MARKERS IN THE LOCATIONS SHOWN IN THE ROADWAY DESIGN PLANS.

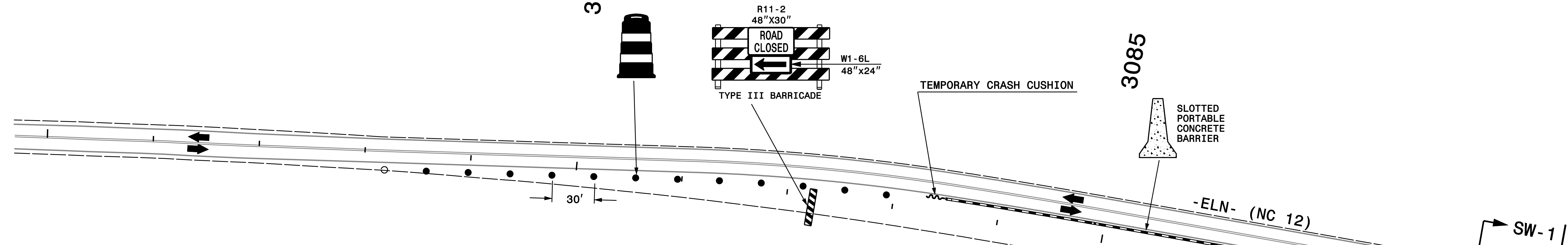
STEP 7: REMOVE ALL TRAFFIC CONTROL DEVICES.

<p>PLAN PREPARED IN THE OFFICE OF:</p> <p><b>PROGRESSIVE</b> DESIGN GROUP, INC.</p> <p>ENGINEERS • CONSULTANTS</p>	<p>APPROVED: <i>[Signature]</i> DATE: 8/28/2015</p> <p>SEAL</p> <p><b>PROFESSIONAL</b> SEAL 025465 ENGINEER TM ARE</p>	<p>DIVISION OF HIGHWAYS STATE OF NORTH CAROLINA DEPARTMENT OF TRANSPORTATION WORK ZONE TRAFFIC CONTROL</p>	<p>TRANSPORTATION MANAGEMENT PLAN TRAFFIC CONTROL PHASING</p>
--	--	--	---

3075

3080

3085



**SECTION SW-1**

EXISTING ASPHALT EMBANKMENT COVER

EXISTING MARKINGS

LOCATE/MARK ALL LONGITUDINAL LOW POINTS ALONG THE RIGHT SIDE OF -ELN- ADJACENT TO THE EXISTING ASPHALT EMBANKMENT COVER

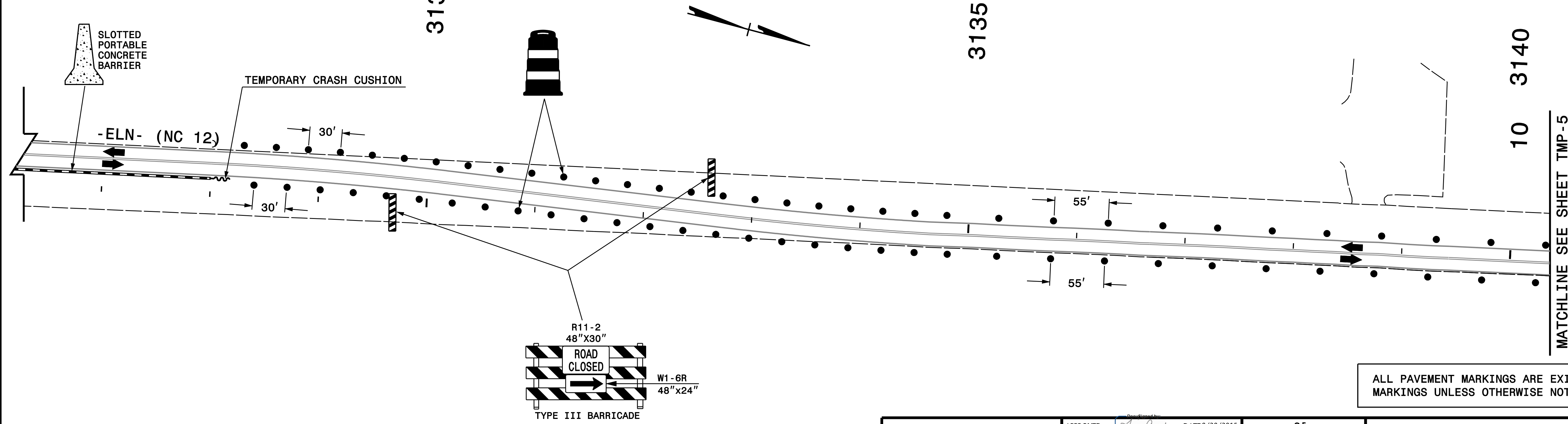
**NOTES FOR SW-1**

- SECTION SW-1 IS DEPICTED HERE IN ORDER TO SHOW A SINGLE LOCATION WHERE A LONGITUDINAL LOW POINT WILL RESULT IN A STORM WATER SPREAD ISSUE IN PHASE II UNLESS ADEQUATELY IDENTIFIED IN THIS PHASE AND THEN IMMEDIATELY TREATED IN PHASE II. (SEE SHEET TMP-8).
- THERE ARE MULTIPLE LOW POINT LOCATIONS ALONG -ELN- THAT WILL NEED TO BE IDENTIFIED IN THIS PHASE AND THEN TREATED IN PHASE II.
- SW-1 IS DEPICTED HERE FOR ILLUSTRATIVE PURPOSES ONLY AND MAY NOT BE COMPLETELY ACCURATE FOR THE LOCATION SHOWN.

3130

3135

3140

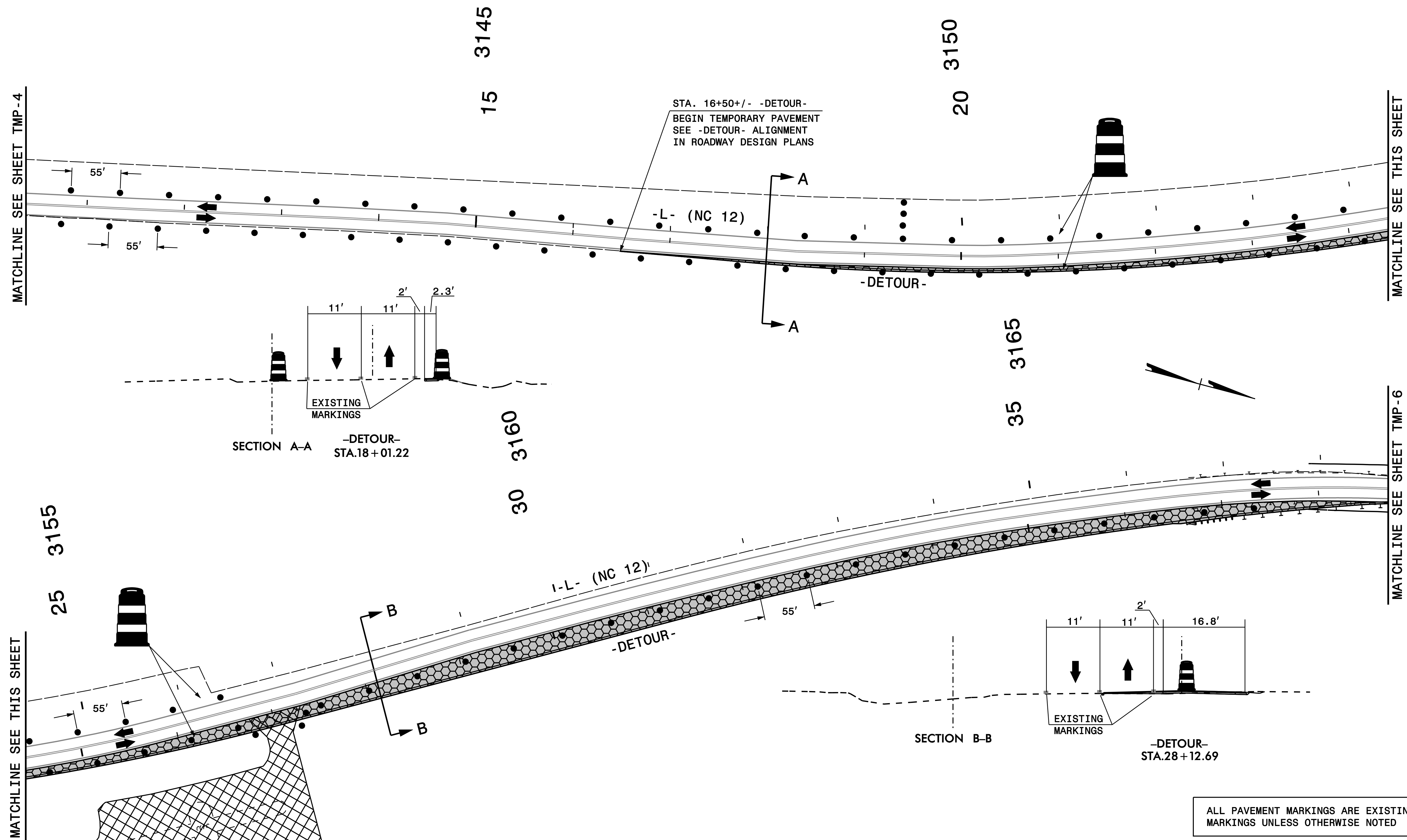


SOME TRAFFIC CONTROL DEVICES FROM STA. 3077+00 +/- -ELN- TO STA. 3135+00 +/- -ELN-, INCLUDING THE DEVICES SHOWN ON THIS SHEET ARE EXISTING 'LEFT IN PLACE' DEVICES FROM THE PREVIOUS PROJECT AND WILL BE AVAILABLE AT THE DATE OF AVAILABILITY FOR THIS PROJECT.

ALL PAVEMENT MARKINGS ARE EXISTING MARKINGS UNLESS OTHERWISE NOTED

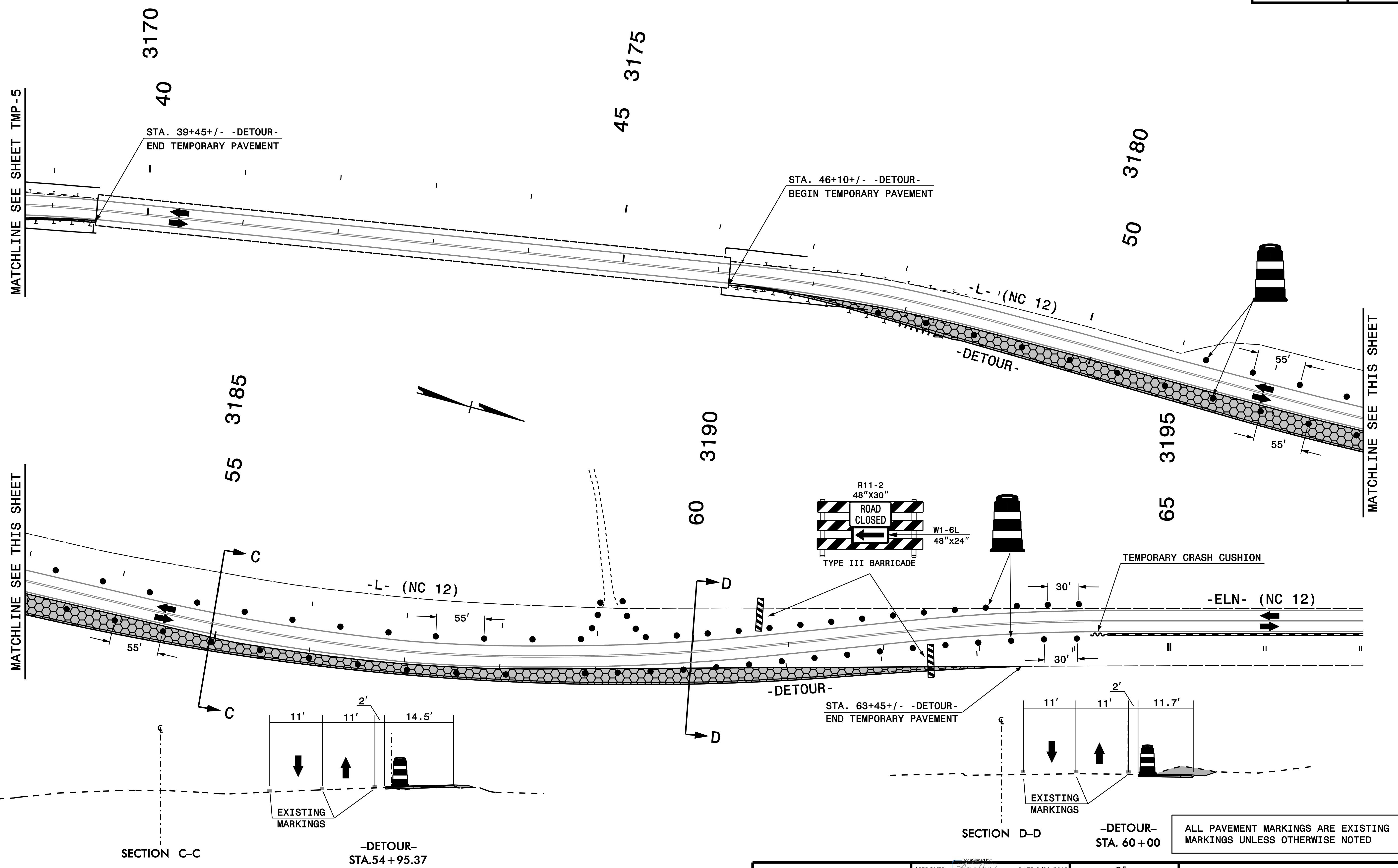
<p>PLAN PREPARED IN THE OFFICE OF:</p> <p><b>PROGRESSIVE DESIGN GROUP, INC.</b></p> <p>ENGINEERS • CONSULTANTS</p>	<p>APPROVED: <i>[Signature]</i> DATE: 8/28/2015</p> <p>SEAL</p>		<p><b>TRANSPORTATION MANAGEMENT PLAN</b></p> <p><b>PHASE I</b></p>
--	---	--	--





ALL PAVEMENT MARKINGS ARE EXISTING MARKINGS UNLESS OTHERWISE NOTED

<p>PLAN PREPARED IN THE OFFICE OF:</p> <p><b>PROGRESSIVE DESIGN GROUP, INC.</b></p> <p>ENGINEERS • CONSULTANTS</p>	<p>APPROVED: <i>[Signature]</i> DATE: 8/28/2013</p> <p>SEAL</p> <p>NORTH CAROLINA PROFESSIONAL ENGINEER SEAL 025465</p>	<p>DIVISION OF HIGHWAYS STATE OF NORTH CAROLINA DEPARTMENT OF TRANSPORTATION WORK ZONE TRAFFIC CONTROL</p>	<p>TRANSPORTATION MANAGEMENT PLAN PHASE I</p>
--	---	--	---

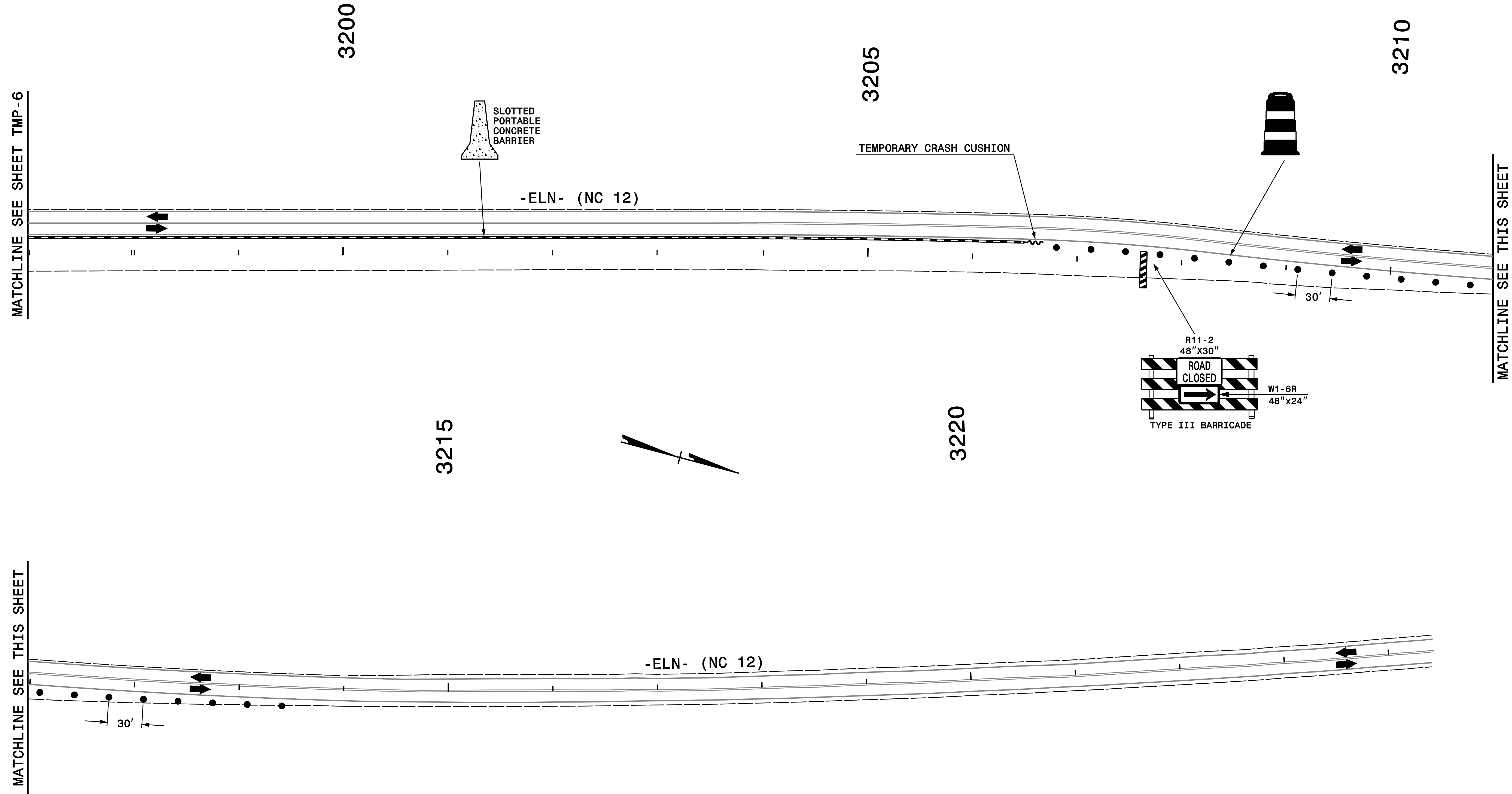


SOME TRAFFIC CONTROL DEVICES FROM STA. 3190+00+/- -L- TO STA. 3215+00+/- -ELN- SHEET ARE EXISTING 'LEFT IN PLACE' DEVICES FROM THE PREVIOUS PROJECT AND WILL BE AVAILABLE AT THE DATE OF AVAILABILITY FOR THIS PROJECT.

ALL PAVEMENT MARKINGS ARE EXISTING MARKINGS UNLESS OTHERWISE NOTED

PLAN PREPARED IN THE OFFICE OF: <b>PROGRESSIVE DESIGN GROUP, INC.</b> ENGINEERS • CONSULTANTS	APPROVED: <i>[Signature]</i> DATE: 8/28/2015 SEAL 		<b>TRANSPORTATION MANAGEMENT PLAN PHASE I</b>
---	--	--	---





MATCHLINE SEE SHEET TMP-6

MATCHLINE SEE THIS SHEET

MATCHLINE SEE THIS SHEET

SOME TRAFFIC CONTROL DEVICES FROM STA. 3190+00 +/- -L- TO STA. 3215+00 +/- -ELN-, INCLUDING THE DEVICES SHOWN ON THIS SHEET ARE EXISTING 'LEFT IN PLACE' DEVICES FROM THE PREVIOUS PROJECT AND WILL BE AVAILABLE AT THE DATE OF AVAILABILITY FOR THIS PROJECT.

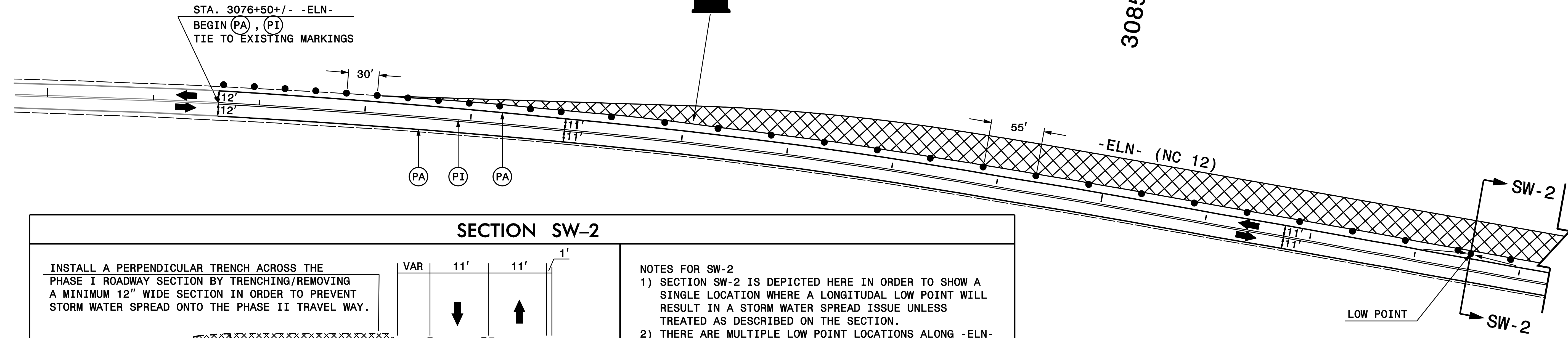
ALL PAVEMENT MARKINGS ARE EXISTING MARKINGS UNLESS OTHERWISE NOTED

<p>PLAN PREPARED IN THE OFFICE OF:</p> <p><b>PROGRESSIVE</b> DESIGN GROUP, INC.</p> <p>ENGINEERS • CONSULTANTS</p>	<p>APPROVED: <i>[Signature]</i> DATE: 8/28/2015</p> <p>SEAL</p>		<p align="center"><b>TRANSPORTATION MANAGEMENT PLAN PHASE I</b></p>
--	---	--	---

3075

3080

3085



**SECTION SW-2**

INSTALL A PERPENDICULAR TRENCH ACROSS THE PHASE I ROADWAY SECTION BY TRENCHING/REMOVING A MINIMUM 12" WIDE SECTION IN ORDER TO PREVENT STORM WATER SPREAD ONTO THE PHASE II TRAVEL WAY.

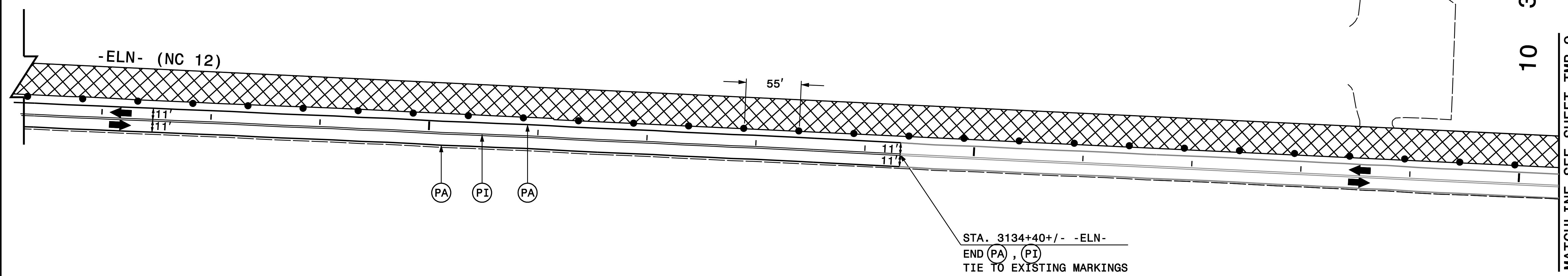
**NOTES FOR SW-2**

- SECTION SW-2 IS DEPICTED HERE IN ORDER TO SHOW A SINGLE LOCATION WHERE A LONGITUDAL LOW POINT WILL RESULT IN A STORM WATER SPREAD ISSUE UNLESS TREATED AS DESCRIBED ON THE SECTION.
- THERE ARE MULTIPLE LOW POINT LOCATIONS ALONG -ELN- THAT WILL NEED TO BE TREATED IN THIS PHASE.
- SW-2 IS DEPICTED HERE FOR ILLUSTRATIVE PURPOSES ONLY AND MAY NOT BE COMPLETELY ACCURATE FOR THE LOCATION SHOWN.

3130

3135

3140

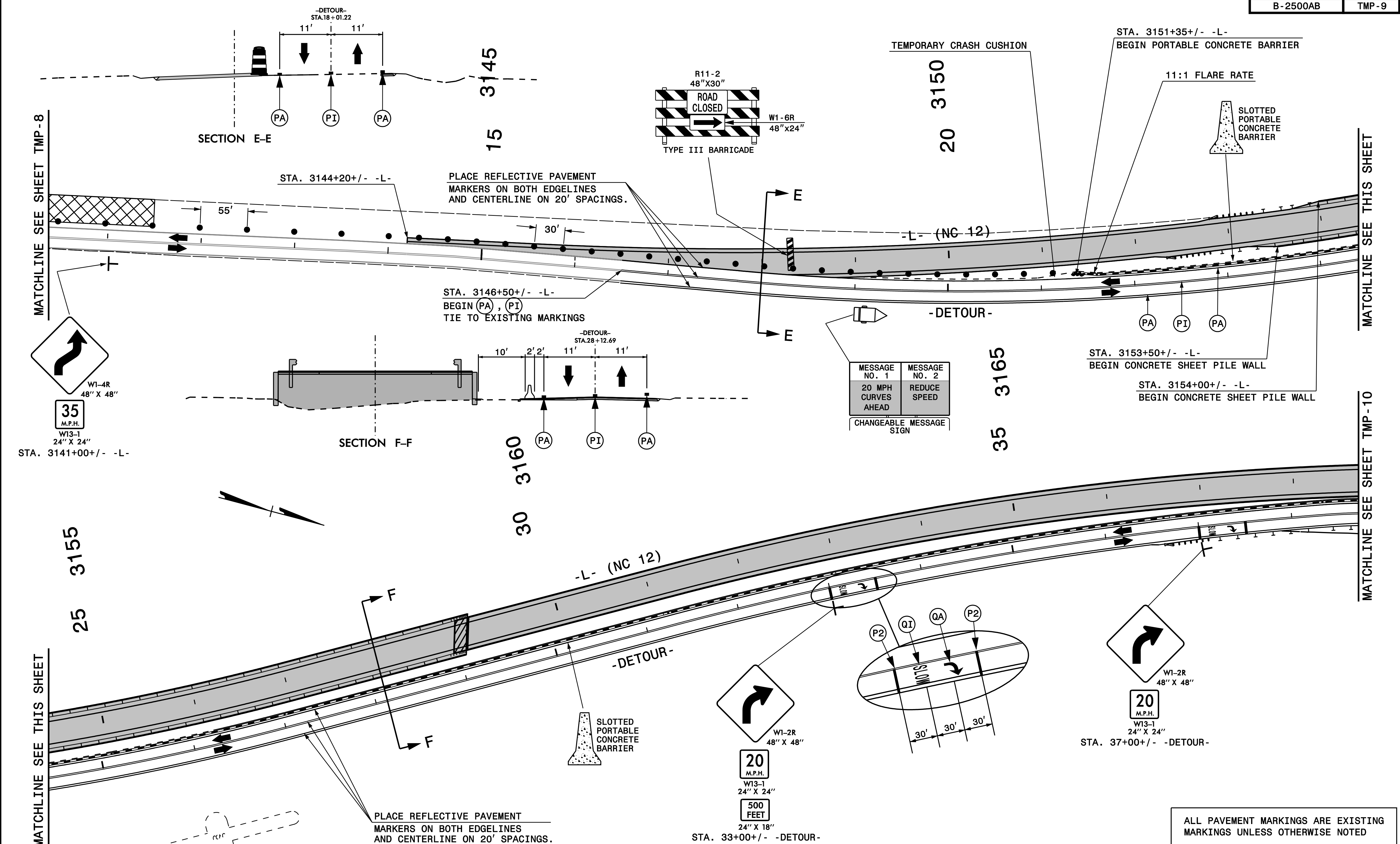


MATCHLINE SEE SHEET TMP-9

ALL PAVEMENT MARKINGS ARE EXISTING MARKINGS UNLESS OTHERWISE NOTED

<p>PLAN PREPARED IN THE OFFICE OF:</p> <p><b>PROGRESSIVE DESIGN GROUP, INC.</b></p> <p>ENGINEERS • CONSULTANTS</p>	<p>APPROVED: <i>[Signature]</i> DATE: 8/28/2015</p> <p>SEAL</p>		<p><b>TRANSPORTATION MANAGEMENT PLAN</b></p> <p><b>PHASE II</b></p>
--	---	--	---





MATCHLINE SEE SHEET TMP-8

MATCHLINE SEE THIS SHEET

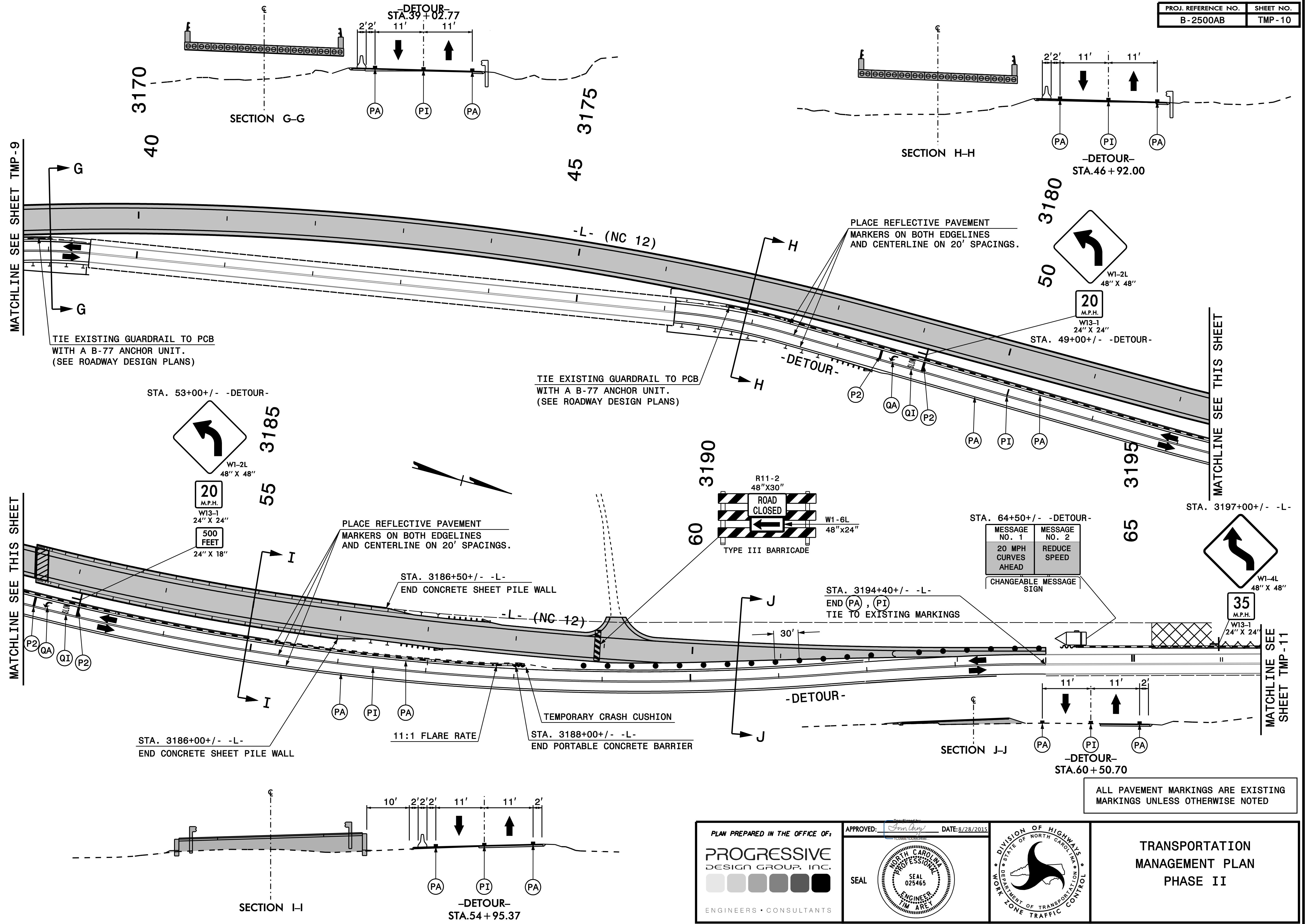
MATCHLINE SEE THIS SHEET

MATCHLINE SEE SHEET TMP-10

ALL PAVEMENT MARKINGS ARE EXISTING MARKINGS UNLESS OTHERWISE NOTED

PLAN PREPARED IN THE OFFICE OF: <b>PROGRESSIVE DESIGN GROUP, INC.</b> ENGINEERS • CONSULTANTS	APPROVED: <i>[Signature]</i> DATE: 8/28/2015	DIVISION OF HIGHWAYS STATE OF NORTH CAROLINA DEPARTMENT OF TRANSPORTATION WORK ZONE TRAFFIC CONTROL	<b>TRANSPORTATION MANAGEMENT PLAN PHASE II</b>
	SEAL 		





MATCHLINE SEE SHEET TMP-9

MATCHLINE SEE THIS SHEET

MATCHLINE SEE THIS SHEET

MATCHLINE SEE SHEET TMP-11

TIE EXISTING GUARDRAIL TO PCB WITH A B-77 ANCHOR UNIT. (SEE ROADWAY DESIGN PLANS)

TIE EXISTING GUARDRAIL TO PCB WITH A B-77 ANCHOR UNIT. (SEE ROADWAY DESIGN PLANS)

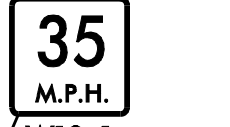
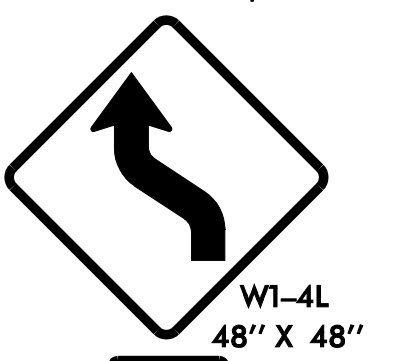
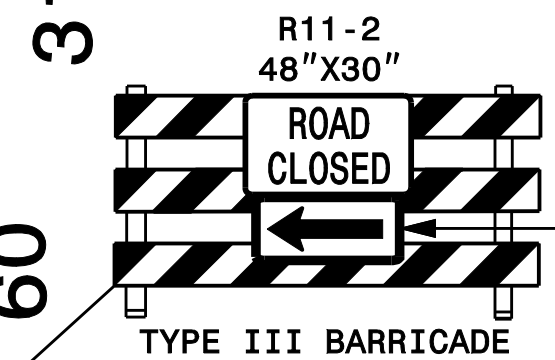
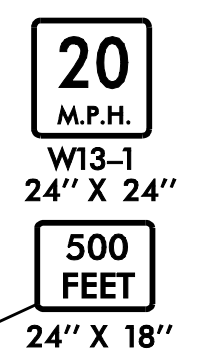
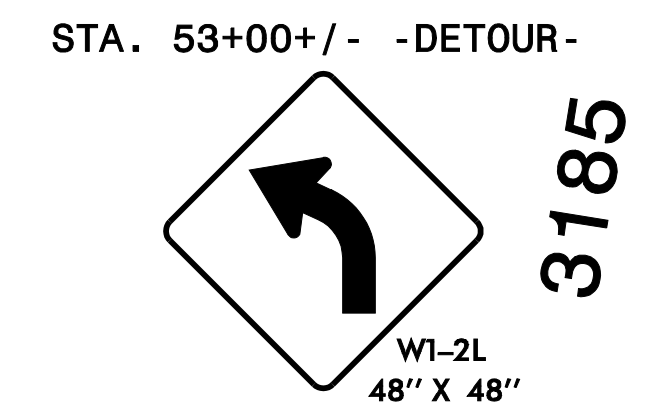
PLACE REFLECTIVE PAVEMENT MARKERS ON BOTH EDGELINES AND CENTERLINE ON 20' SPACINGS.

PLACE REFLECTIVE PAVEMENT MARKERS ON BOTH EDGELINES AND CENTERLINE ON 20' SPACINGS.

CHANGEABLE MESSAGE SIGN

MESSAGE NO. 1 20 MPH CURVES AHEAD	MESSAGE NO. 2 REDUCE SPEED
--------------------------------------	-------------------------------

ALL PAVEMENT MARKINGS ARE EXISTING MARKINGS UNLESS OTHERWISE NOTED



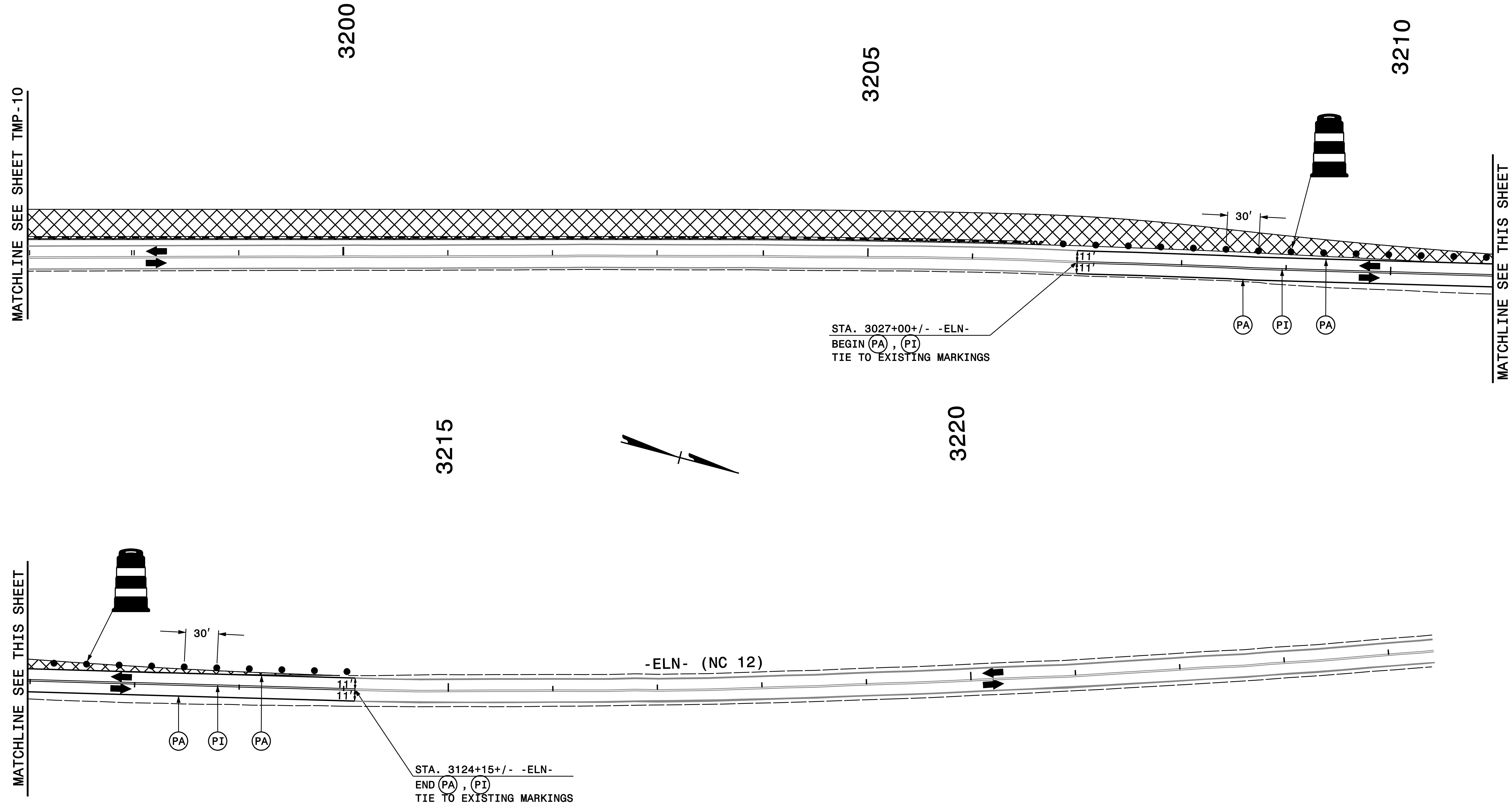
PLAN PREPARED IN THE OFFICE OF:  
**PROGRESSIVE DESIGN GROUP, INC.**  
ENGINEERS • CONSULTANTS

APPROVED: *[Signature]* DATE: 8/28/2015  
SEAL  
NORTH CAROLINA PROFESSIONAL ENGINEER  
SEAL 025465

DIVISION OF HIGHWAYS  
STATE OF NORTH CAROLINA  
DEPARTMENT OF TRANSPORTATION  
WORK ZONE TRAFFIC CONTROL

TRANSPORTATION MANAGEMENT PLAN  
PHASE II





ALL PAVEMENT MARKINGS ARE EXISTING MARKINGS UNLESS OTHERWISE NOTED

<p>PLAN PREPARED IN THE OFFICE OF:</p> <p><b>PROGRESSIVE DESIGN GROUP, INC.</b></p> <p>ENGINEERS • CONSULTANTS</p>	<p>APPROVED: <i>[Signature]</i> DATE: 8/28/2015</p> <p>SEAL</p> <p><b>NORTH CAROLINA PROFESSIONAL ENGINEER</b> SEAL 025465 TM ARE</p>	<p>DIVISION OF HIGHWAYS STATE OF NORTH CAROLINA DEPARTMENT OF TRANSPORTATION WORK ZONE TRAFFIC CONTROL</p>	<p>TRANSPORTATION MANAGEMENT PLAN PHASE II</p>
--	---	--	--