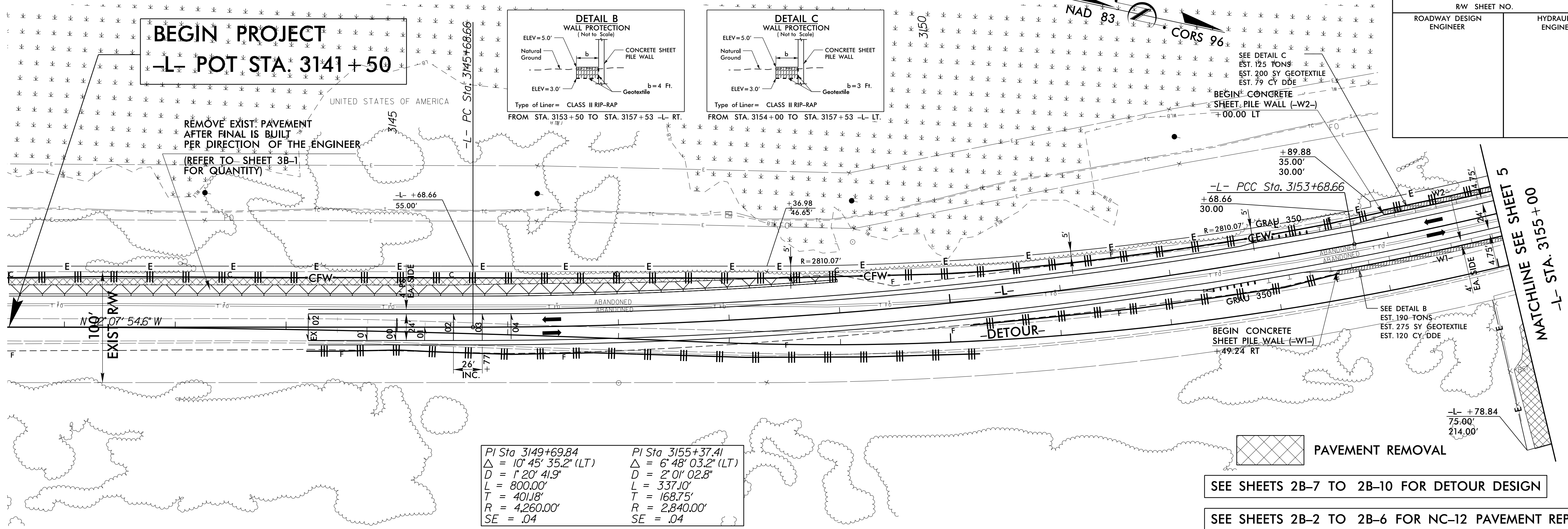


PROJECT REFERENCE NO. B-2500AB	SHEET NO. EC-8/CONST.4
RW SHEET NO.	
ROADWAY DESIGN ENGINEER	HYDRAULICS ENGINEER



PI Sta 3149+69.84 $\Delta = 10^{\circ} 45' 35.2''$ (LT) $D = 1^{\circ} 20' 41.9''$ $L = 800.00'$ $T = 401.18'$ $R = 4,260.00'$ $SE = .04$	PI Sta 3155+37.41 $\Delta = 6^{\circ} 48' 03.2''$ (LT) $D = 2^{\circ} 01' 02.8''$ $L = 337.10'$ $T = 168.75'$ $R = 2,840.00'$ $SE = .04$
---	--

SEE SHEETS 2B-7 TO 2B-10 FOR DETOUR DESIGN

SEE SHEETS 2B-2 TO 2B-6 FOR NC-12 PAVEMENT REPAIR

SEE SHEETS W-1 TO W-13 FOR WALL DETAILS

