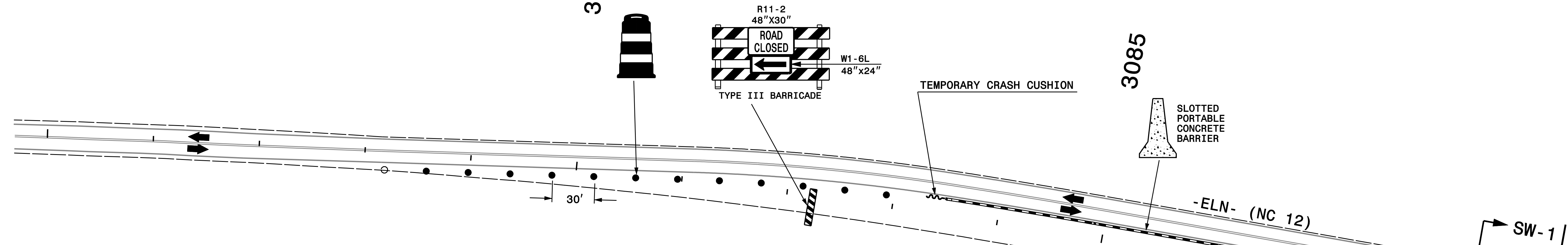


3075

3080

3085



SECTION SW-1

EXISTING ASPHALT EMBANKMENT COVER

EXISTING MARKINGS

LOCATE/MARK ALL LONGITUDINAL LOW POINTS ALONG THE RIGHT SIDE OF -ELN- ADJACENT TO THE EXISTING ASPHALT EMBANKMENT COVER

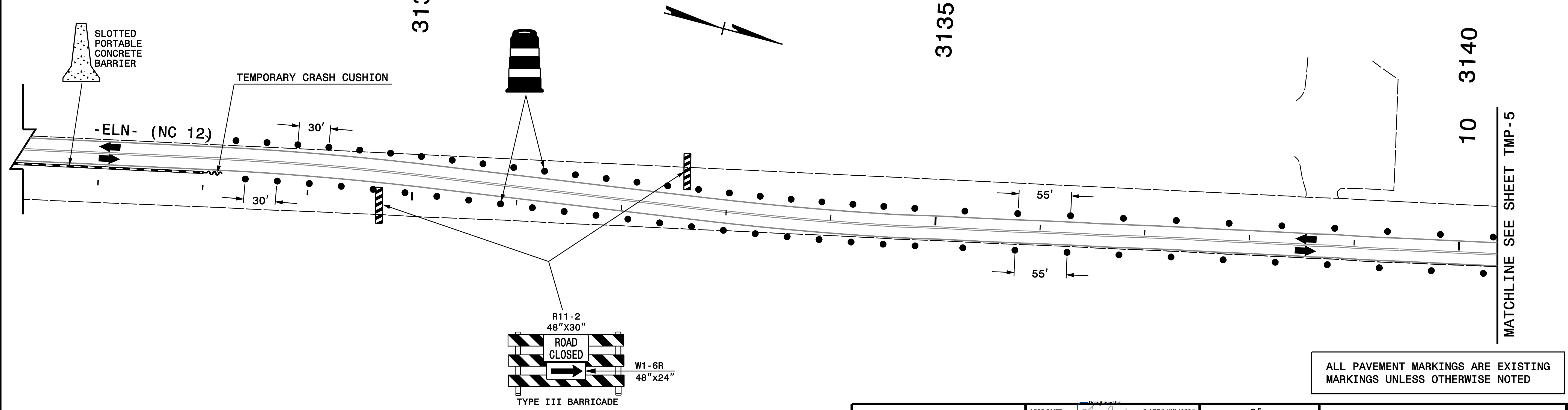
NOTES FOR SW-1

- SECTION SW-1 IS DEPICTED HERE IN ORDER TO SHOW A SINGLE LOCATION WHERE A LONGITUDINAL LOW POINT WILL RESULT IN A STORM WATER SPREAD ISSUE IN PHASE II UNLESS ADEQUATELY IDENTIFIED IN THIS PHASE AND THEN IMMEDIATELY TREATED IN PHASE II. (SEE SHEET TMP-8).
- THERE ARE MULTIPLE LOW POINT LOCATIONS ALONG -ELN- THAT WILL NEED TO BE IDENTIFIED IN THIS PHASE AND THEN TREATED IN PHASE II.
- SW-1 IS DEPICTED HERE FOR ILLUSTRATIVE PURPOSES ONLY AND MAY NOT BE COMPLETELY ACCURATE FOR THE LOCATION SHOWN.

3130

3135

3140



SOME TRAFFIC CONTROL DEVICES FROM STA. 3077+00 +/- -ELN- TO STA. 3135+00 +/- -ELN-, INCLUDING THE DEVICES SHOWN ON THIS SHEET ARE EXISTING 'LEFT IN PLACE' DEVICES FROM THE PREVIOUS PROJECT AND WILL BE AVAILABLE AT THE DATE OF AVAILABILITY FOR THIS PROJECT.

ALL PAVEMENT MARKINGS ARE EXISTING MARKINGS UNLESS OTHERWISE NOTED

<p>PLAN PREPARED IN THE OFFICE OF:</p> <p>PROGRESSIVE DESIGN GROUP, INC.</p> <p>ENGINEERS • CONSULTANTS</p>	<p>APPROVED: <i>[Signature]</i> DATE: 8/28/2015</p> <p>SEAL</p>		<p>TRANSPORTATION MANAGEMENT PLAN</p> <p>PHASE I</p>
--	---	--	--